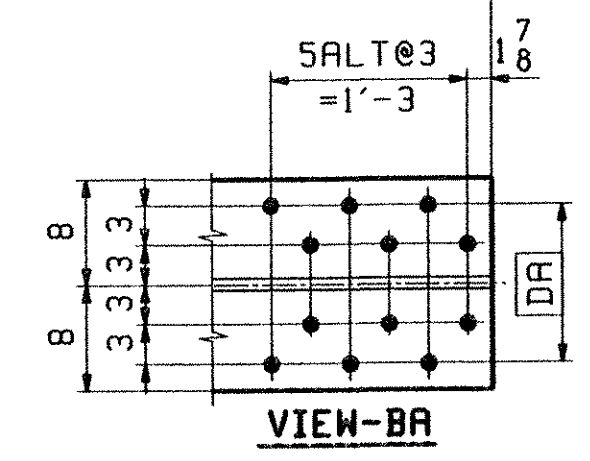
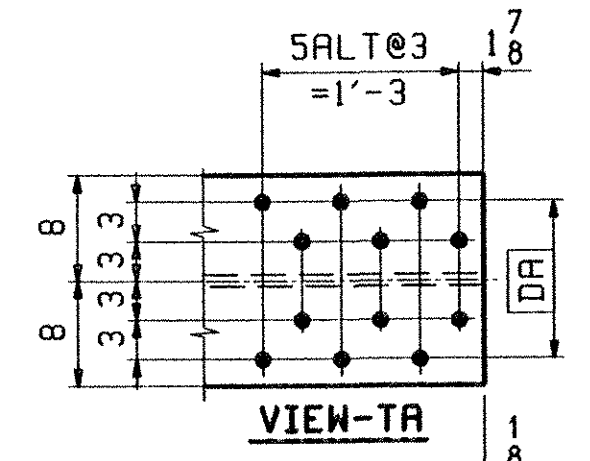
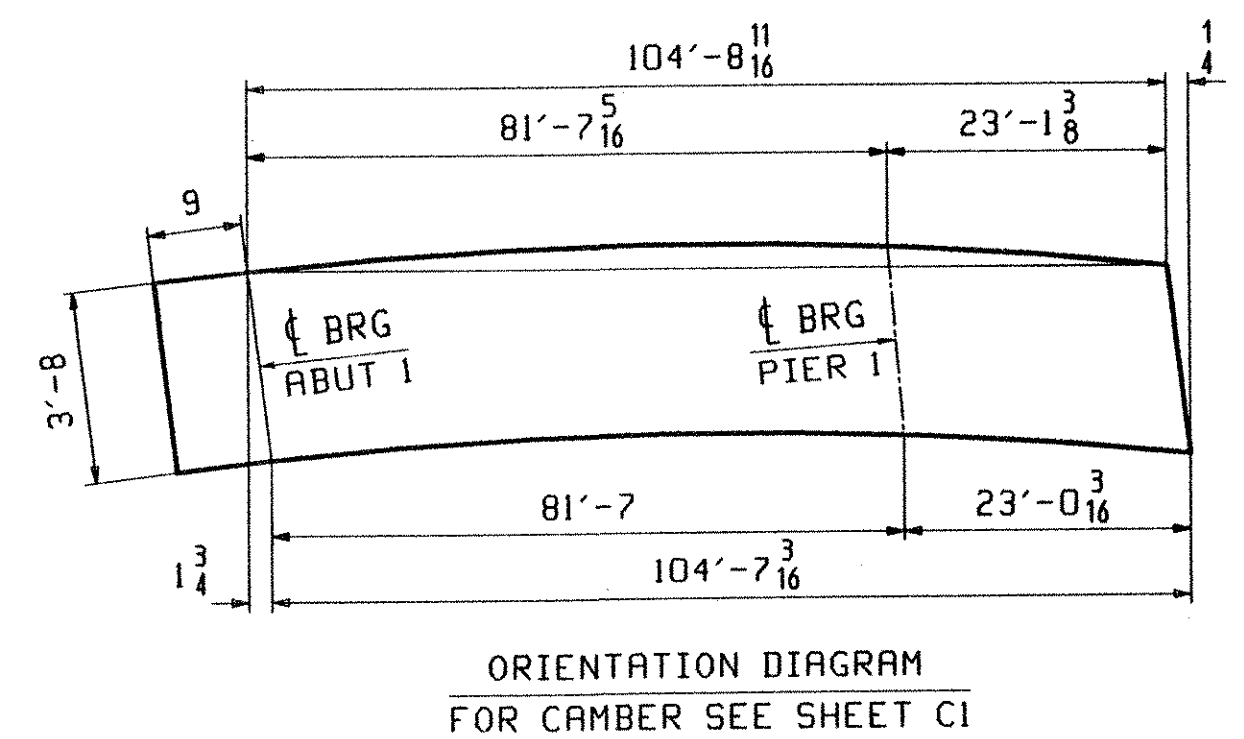
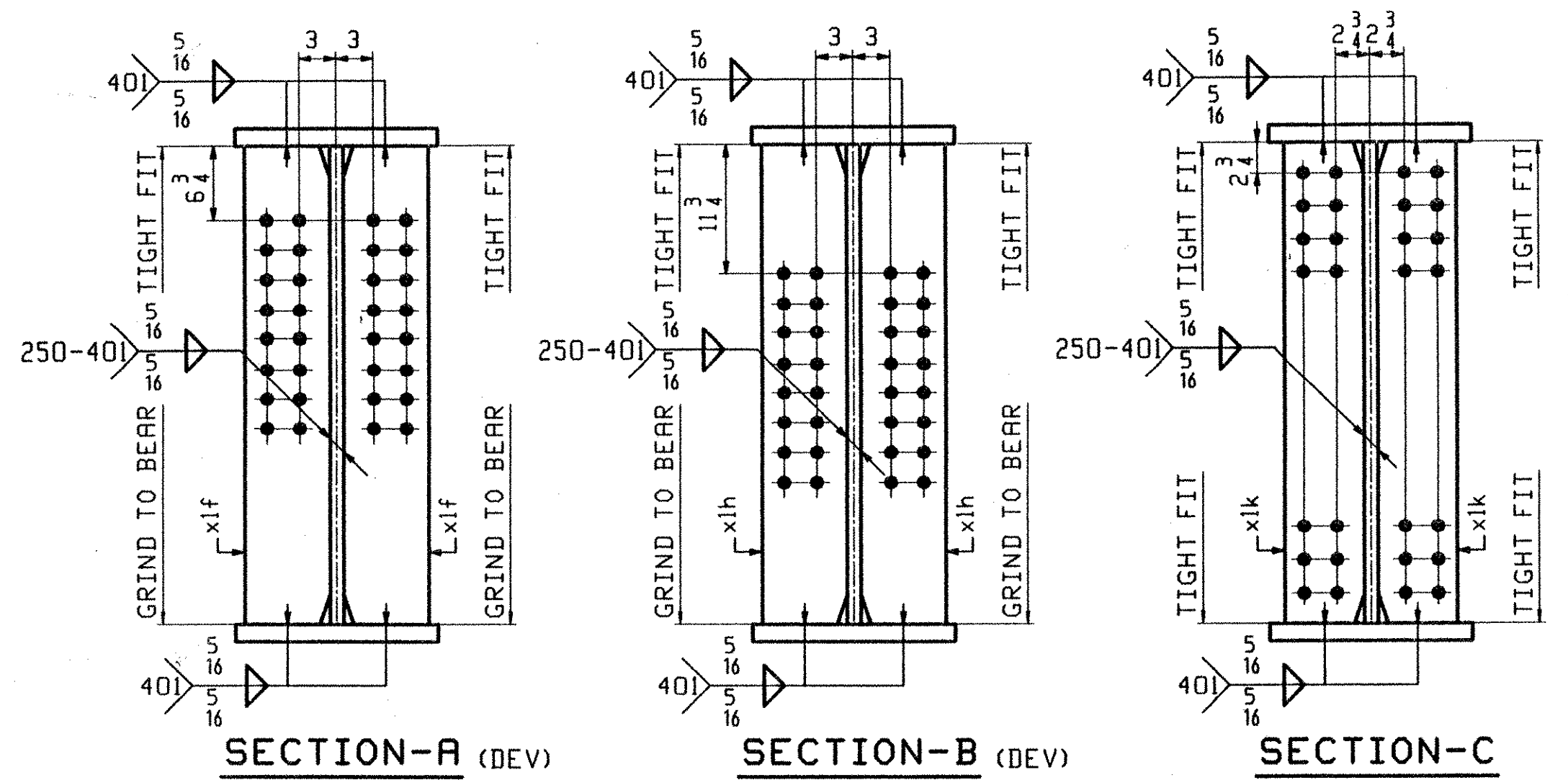


ONE - GIRDER - G3A (DEV)

1. FOR GIRDER STANDARD DETAILS SEE DWG. XI.
2. FOR CAMBER DIAGRAM SEE DWG. C1.
3. FOR FLANGE DIAGRAM SEE DWG. F1.
4. FOR GENERAL NOTES SEE SHT. GNI.



ABM INFO		SHIP		BILL OF MATERIAL		JOB NO.	DRAWING NO.	REV.	
PAGE	LINE	MARK	QTY	MARK	MATERIAL	LENGTH FT INCHES	REMARKS	HT	PROCUREMENT NOTES
		G3A	1		GIRDER			21084	
3	N		1	wa	PL 1/2x45	49 10 3/4	(M270-50HT2) (H2-3)		
4	G		1	wb	PL 1/2x45	55 7 1/4	(M270-50HT2) (H2-3)		
1	Y		1	ta	PL 1/2x16	72 5 5/8	(M270-50HT2) (H2-3)		
1	C		1	tb	PL 1/2x16	33 0 1/8	(M270-50HT2) (H2-3)		
1	Y		1	ba	PL 1/2x16	72 4 5/8	(M270-50HT2) (H2-3)		
1	C		1	bb	PL 1/2x16	33 0 1/8	(M270-50HT2) (H2-3)		
5	B		2	xlf	PL 3/4x7 1/2	3 8	(M270-50HT2) (H2-3)		
5	C		10	xlk	PL 1/2x7	3 8	(M270-50HT2) (H2-3)		
5	B		2	xlh	PL 3/4x7 1/2	3 8	(M270-50HT2) (H2-3)		



RECEIVED
 CK'D BY *DTV* OK'D BY _____
 SEP 16 2002
 RESUBMIT _____ APPROVED *As noted*
 BY *RW* DATE _____

OUT FOR APPROVAL	<i>FB</i>											
OUT FOR APPROVAL												
ISSUED TO SHOP												
FIELD & OFFICE												
REV.	REMARKS	DATE	DWN	CHK	APP	O.A.	NO.	DIA.	LGT	TYPE	WASHER	
	MATERIAL:											
	M270-50W											
	ELECTRODES:											
	HOLES:											
	15 16" Ø											
	SHOP BOLTS:											
SURFACE PREP. & PAINT: -STEEL WITHIN 10'-0 ENDS OF GIRDERS SHALL BE PAINTED (SEE GNI) -ALL OTHER STEEL SHALL BE BLAST CLEANED AND LEFT UNPAINTED.												
DESCRIPTION: GIRDER - G3A										DRAWN BY		DATE
JOB: VT. ROUTE 9 OVER DEERFIELD RIVER										ATD		08/30
BRIDGE 25B										CHKD BY		
SEARSBURG, VERMONT										DO		09/04
CONTRACTOR: J.A. McDONALD										APPROV BY		
PROJ NO. NHF-010-1(18)										SUPERVISOR		W. J. GATTI
CUSTOMER: VERMONT AGENCY OF TRANSPORTATION										Q.A.		
CASCO BAY STEEL STRUCTURES, INC.										JOB NO.		DRG. NO.
75 SPRING HILL ROAD										167		3
PHONE (207) 282-7360										SACO, MAINE 04072		
FAX. (207) 282-1179										REV.		△