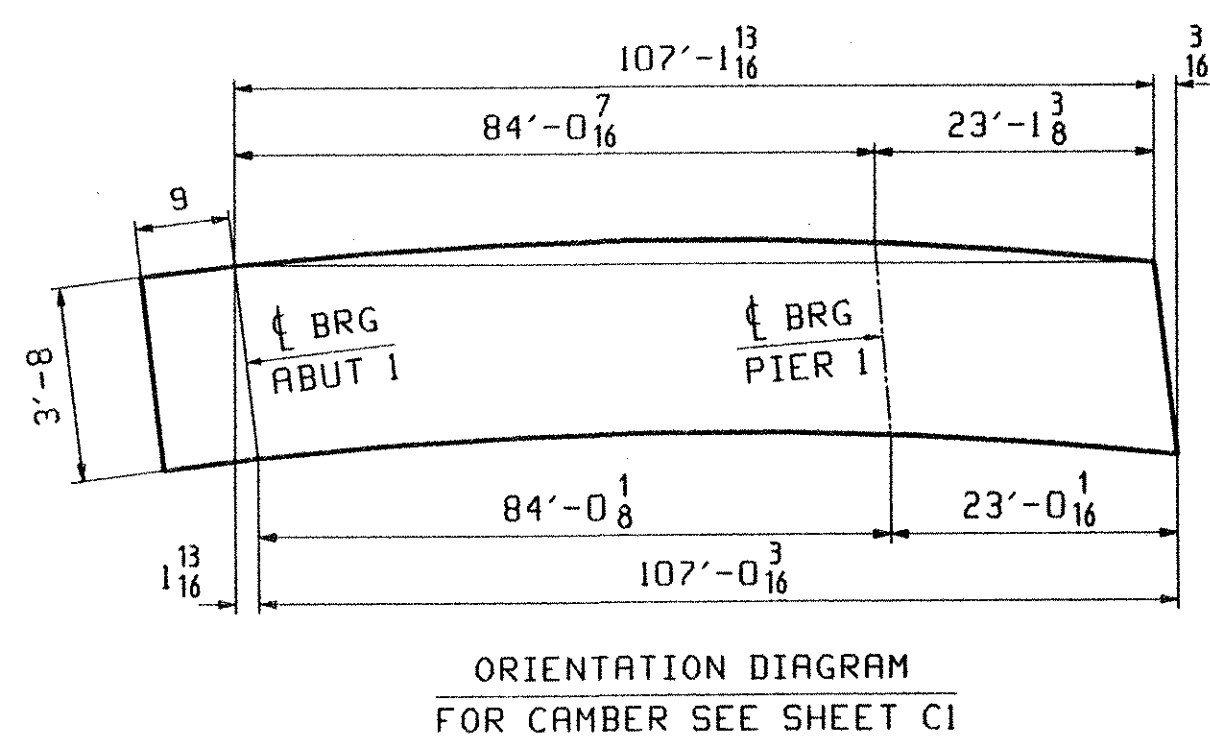
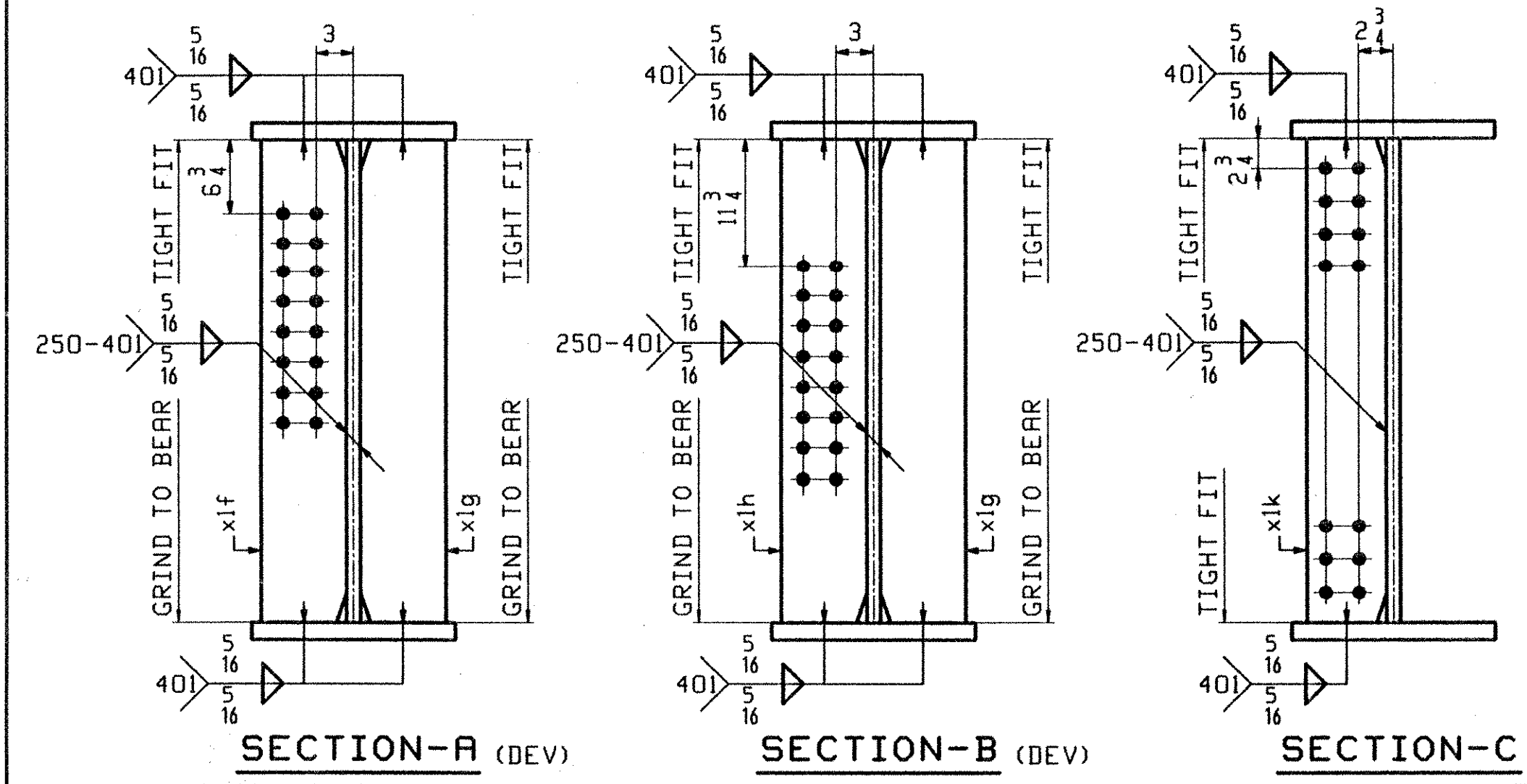
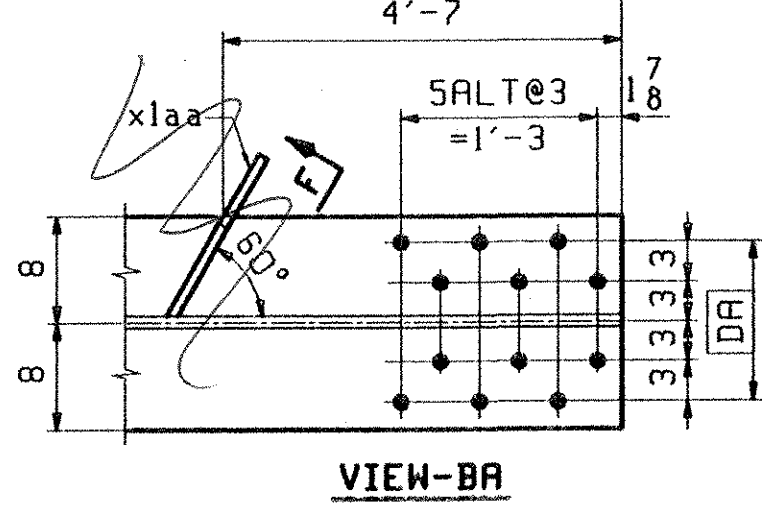
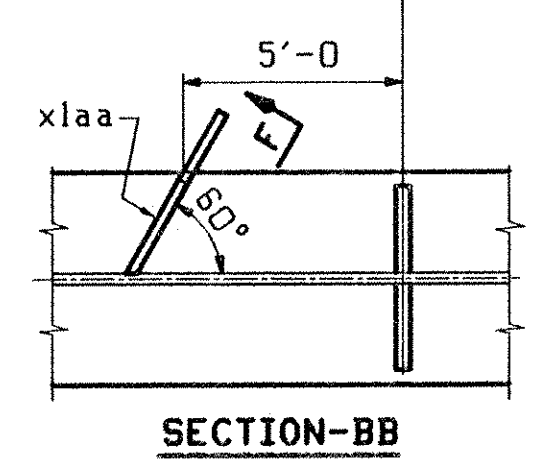
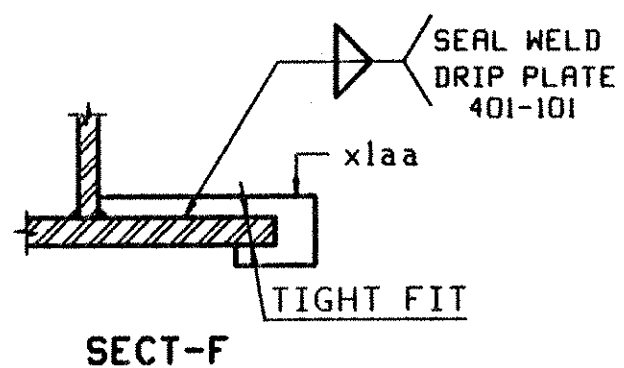


**ONE - GIRDER - G1A (DEV)**

1. FOR GIRDER STANDARD DETAILS SEE DWG. XI.
2. FOR CAMBER DIAGRAM SEE DWG. CI.
3. FOR FLANGE DIAGRAM SEE DWG. FI.
4. FOR GENERAL NOTES SEE SHT. GNI.



ABH INFO		BILL OF MATERIAL				JOB NO.	DRAWING NO.	REV.	
PAGE	LINE	MARK	QTY	MARK	MATERIAL	LENGTH FT INCHES	REMARKS	WT	PROCUREMENT NOTES
		G1A	1		GIRDER			21277	
3	N	1	wa	PL	1/2 x 4 7/8	49 10 13/16	(M270-50HT2) (H2-3)		
4	C	1	wb	PL	1/2 x 4 5/8	58 0 1/4	(M270-50HT2) (H2-3)		
1	L	1	ta	PL	1/2 x 16	74 10 3/4	(M270-50HT2) (H2-3)		
1	C	1	tb	PL	1/2 x 16	33 0 1/16	(M270-50HT2) (H2-3)		
1	L	1	ba	PL	1/2 x 16	74 9 9/16	(M270-50HT2) (H2-3)		
1	C	1	bb	PL	1/2 x 16	33 0 1/16	(M270-50HT2) (H2-3)		
5	B	1	xlf	PL	3/4 x 7 1/2	3 8	(M270-50HT2) (H2-3)		
5	B	2	xlg	PL	3/4 x 7 1/2	3 8	(M270-50HT2) (H2-3)		
5	C	5	xik	PL	1/2 x 7	3 8	(M270-50HT2) (H2-3)		
5	B	1	xlh	PL	1/2 x 7 1/2	3 8	(M270-50HT2) (H2-3)		
5	K		xlaa	PL	1/2 x 3 1/2	0 11			

OUT FOR APPROVAL	9-13-02										
OUT FOR APPROVAL											
ISSUED TO SHOP											
FIELD & OFFICE											
REV.	REMARKS	DATE	DMN	CHK	APP	Q.A.	NO.	DIA.	LGT	TYPE	WASHER
	MATERIAL:										
	M270-50W										
	ELECTRODES:										
	HOLES:										
	SHOP BOLTS:										
	SURFACE PREP. & PAINT: -STEEL WITHIN 10'-0" ENDS OF GIRDERS SHALL BE PAINTED (SEE GNI) -ALL OTHER STEEL SHALL BE BLAST CLEANED AND LEFT UNPAINTED.										
DESCRIPTION:		GIRDER - G1A							DRAWN BY		DATE
JOB:		VT. ROUTE 9 OVER DEERFIELD RIVER							RTD		08/30
		BRIDGE 25B							CHKD BY		
		SEARSBURG, VERMONT							DO		09/04
		CONTRACTOR: J.A. McDONALD							APPROV BY		
									SUPERVISOR		H. J. GATTI
PROJ. NO.		NH-010-1(18)									Q.A.
CUSTOMER:		VERMONT AGENCY OF TRANSPORTATION									
CASCO BAY STEEL STRUCTURES, INC.		JOB NO.		DRG. NO.							
75 SPRING HILL ROAD		167		1							
PHONE (207) 282-7360		SACO, MAINE 04072		REV.							
		FAX (207) 282-1179		1							

PTD File Rev. 8/15/2002 EST 2002 C:\msd\jsh\2002\1-Rev0

686-BP25B-551