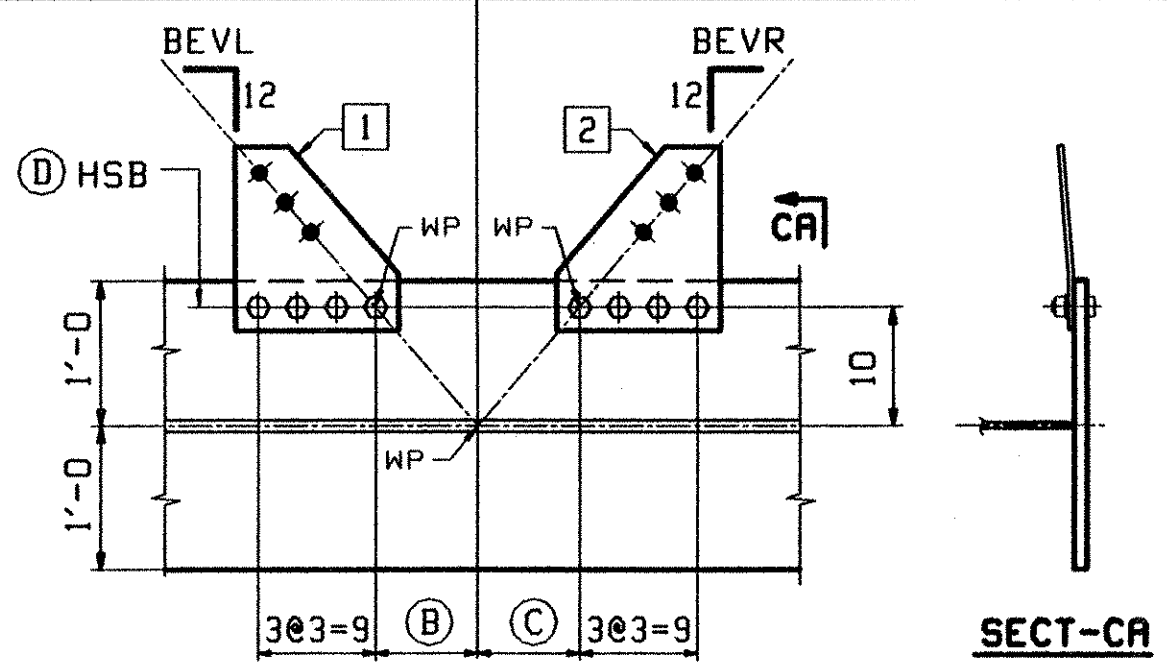
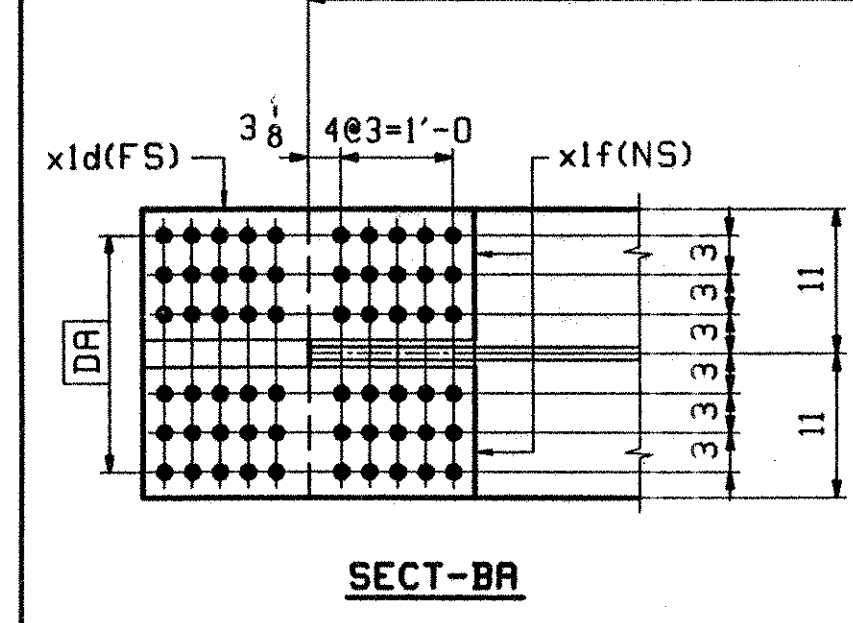
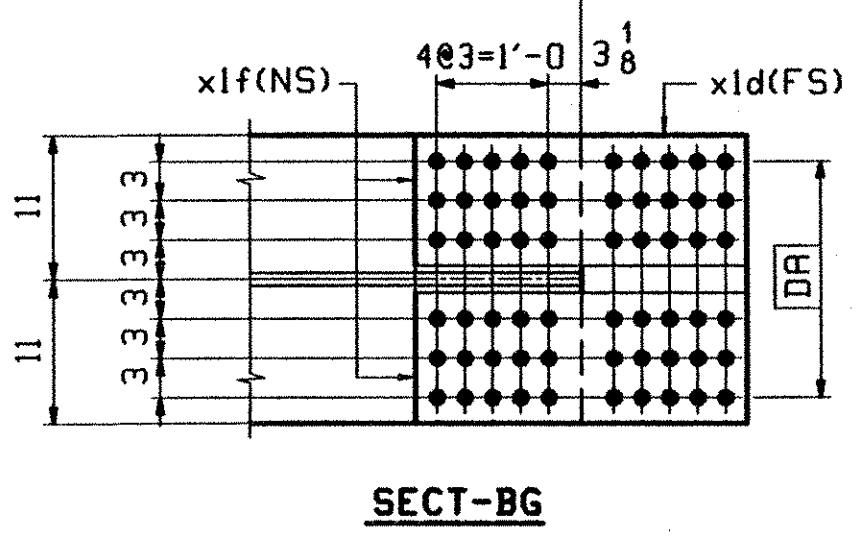


ABM INFO		BILL OF MATERIAL				JOB NO.		DRAWING NO.		REV.
PAGE	LINE	MARK	QTY	MATERIAL	LENGTH	REMARKS	WT	ID	PROCUREMENT	NOTES
					FT					
		GSB	1	GIRDER				34525		
5	C	1	wa	PL 1/2 x 74	69 11/8	(M270-50HT2) (H2-3)				
6	W	1	wb	PL 1/2 x 72	12 7/8	(M270-50HT2) (H2-3)				
4	Q	1	ta	PL 1x16	15 11/8	(M270-50HT2) (H2-3)				
1	A	1	tb	PL 2x24	46 0	(M270-50HT2) (H2-3)				
4	G	1	tc	PL 1x16	20 3/4	(M270-50HT2) (H2-3)				
2	Q	1	ba	PL 1x24	15 11/8	(M270-50HT2) (H2-3)				
1	A	1	bb	PL 2x24	46 0	(M270-50HT2) (H2-3)				
1	Y	1	bc	PL 1 1/4 x 24	20 7/16	(M270-50HT2) (H2-3)				
7	B	4	xla	PL 1/2 x 66 1/2	1 7	(M270-50HT2) (H2-3)				
7	D	2	xlb	PL 1/2 x 16	2 4	(M270-50HT2) (H2-3)				
7	E	4	xlc	PL 1/2 x 7 1/4	2 4	(M270-50HT2) (H2-3)				
7	F	2	xld	PL 5/8 x 24	2 10	(M270-50HT2) (H2-3)				
7	G	4	xlf	PL 5/8 x 11 1/4	2 10	(M270-50HT2) (H2-3)				
7	P	6	xlg	PL 1/2 x 8	6 0	(M270-50HT2) (H2-3)				
7	N	2	xlh	PL 1 1/4 x 11	6 0	(M270-50HT2) (H2-3)				
7	T	3	x2ac	PL 3/8 x 12 1/2	1 2 1/2	BENT				
7	T	6	x2am	PL 3/8 x 12 1/2	1 2 1/2	BENT				
7	T	3	x2ad	PL 3/8 x 12 1/2	1 2 1/2	BENT				
7	P	11	xlv	PL 1/2 x 8	6 0	(M270-50HT2) (H2-3)				
7	R	1	xlab	PL 1/2 x 3	1 3/16					
7	R	1	xlad	PL 1/2 x 4	1 3/16					
9	M	8		7/8 HSB	0 2 1/2	(A325-3)				
9	N	8		7/8 HSB	0 3	(A325-3)				
9	R	32		7/8 HSB	0 3 1/4	(A325-3)				
9	T	48		8/8 HSB		(F436N)				



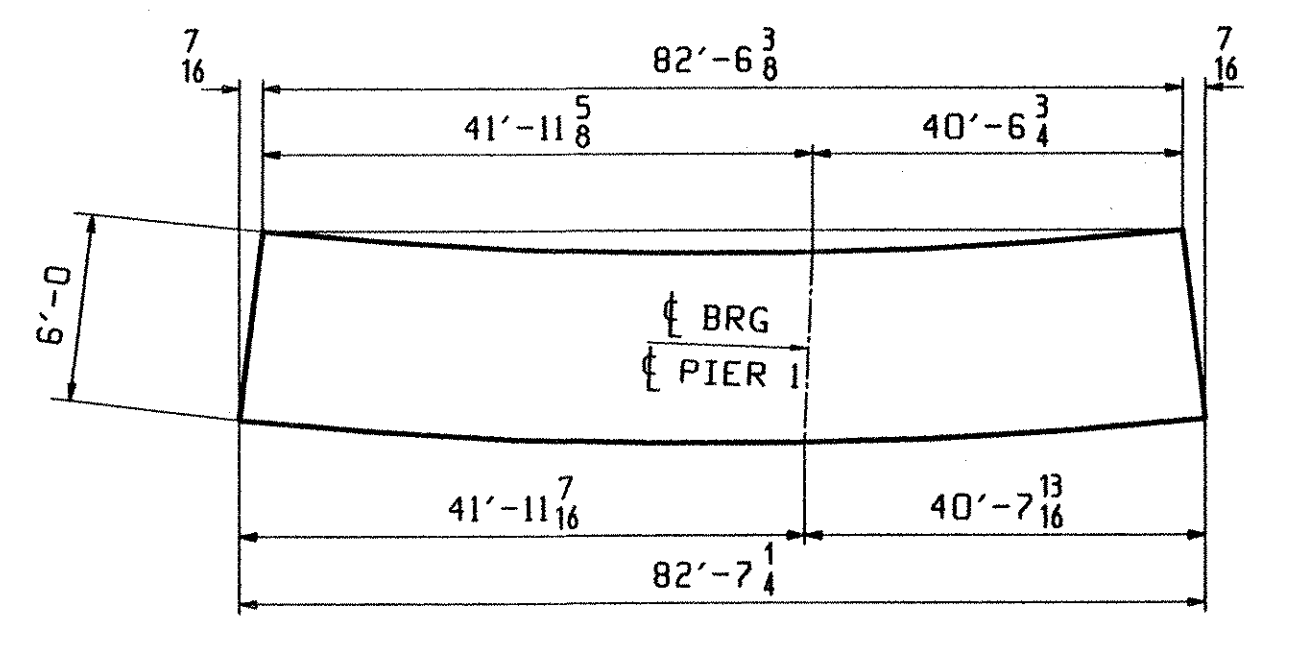
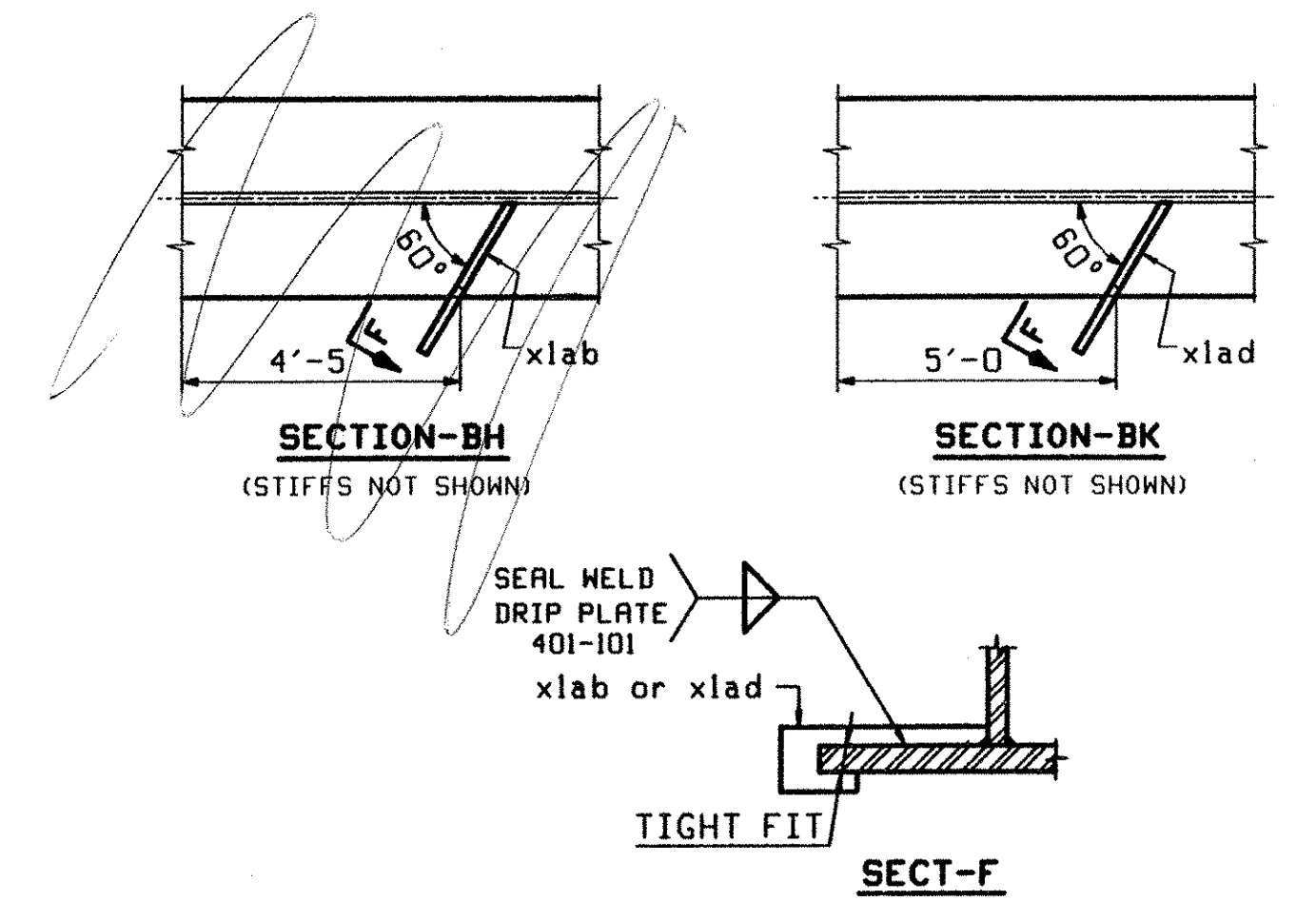
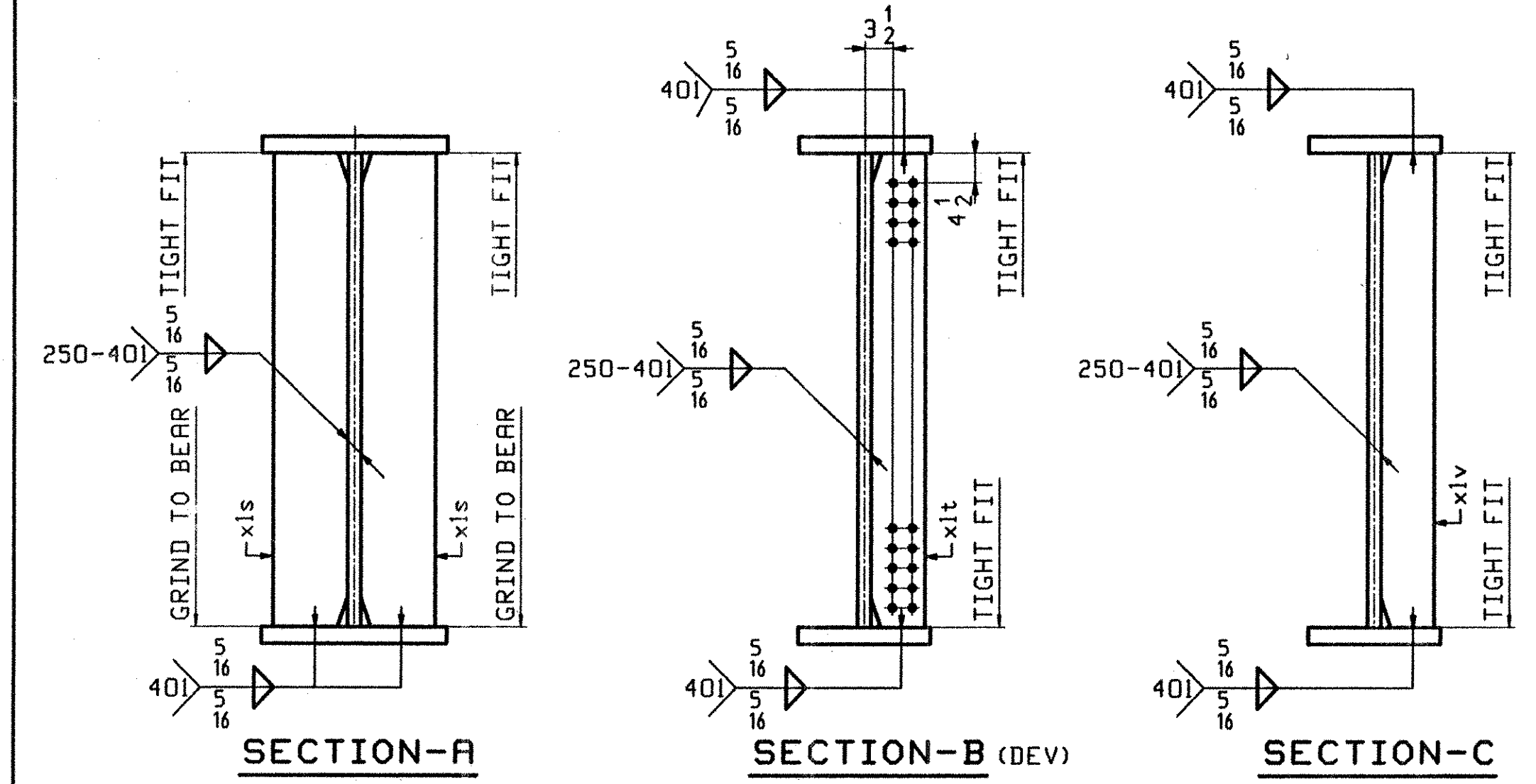
SECT	(B)	(C)	BEVL	BEVR	(1)	(2)	(D)
BB	7 7/16	7 1/2	8 15/16	9	x2ac	x2am	7/8 x 2 3/4
BC	7 7/16	7 1/2	8 15/16	9	x2ac	x2am	7/8 x 3 3/4
BD	7 1/2	7 1/2	9	9	x2ad	x2am	7/8 x 3 3/4
BE	7 7/16	7 1/2	8 15/16	9	x2ac	x2am	7/8 x 3 3/4
BF	7 1/2	7 1/2	9	9	x2ad	x2am	7/8 x 3



**ONE - GIRDER - G5B (DEV)**

1. FOR GIRDER STANDARD DETAILS SEE DWG. X1 & X2.
2. FOR CAMBER DIAGRAM SEE DWG. C2.
3. FOR FLANGE DIAGRAM SEE DWG. F3.
4. FOR GENERAL NOTES SEE SHT. GNI.

RECEIVED  
 OK'D BY: [Signature]  
 SEP 09 2002  
 RESUBMIT APPROVED BY: [Signature]  
 BY: RRW DATE 9-27-02



OUT FOR APPROVAL	9-9-02										
OUT FOR APPROVAL											
ISSUED TO SHOP											
FIELD & OFFICE											
REV.	REMARKS	DATE	DWN	CHK	APP	Q.A.	NO.	DIA.	LGT	TYPE	WASHER
	MATERIAL:										
	M270-50W										
	ELECTRODES:										
	HOLES:										
	1 1/2" Ø (UN)										
	SHOP BOLTS:										
	AS NOTED										
SURFACE PREP. & PAINT: -STEEL WITHIN 10'-0 ENDS OF GIRDERS SHALL BE PAINTED (SEE GNI) -ALL OTHER STEEL SHALL BE BLAST CLEANED AND LEFT UNPAINTED.											
DESCRIPTION:	GIRDER - G5B							DRAWN BY	DATE		
JOB:	VT RTE 9 OVER THE DEERFIELD RIVER							ATD	08/26		
	BRIDGE NO. 25A							CHKD BY			
	SEARSBURG, VERMONT							DO	08/28		
	CONTRACTOR: J.A. McDONALD							APPROV BY			
								SUPERVISOR	M. J. GHTI		
PROJ NO.	PROJ. NHF 010-1(K18)							Q.A.			
CUSTOMER: VERMONT AGENCY OF TRANSPORTATION											
<b>CASCO BAY STEEL STRUCTURES, INC.</b>											
75 SPRING HILL ROAD	SACO, MAINE 04072					JOB NO.	DRG. NO.				
PHONE (207) 282-7360	FAX. (207) 282-1179					166	10				
							REV.		△		