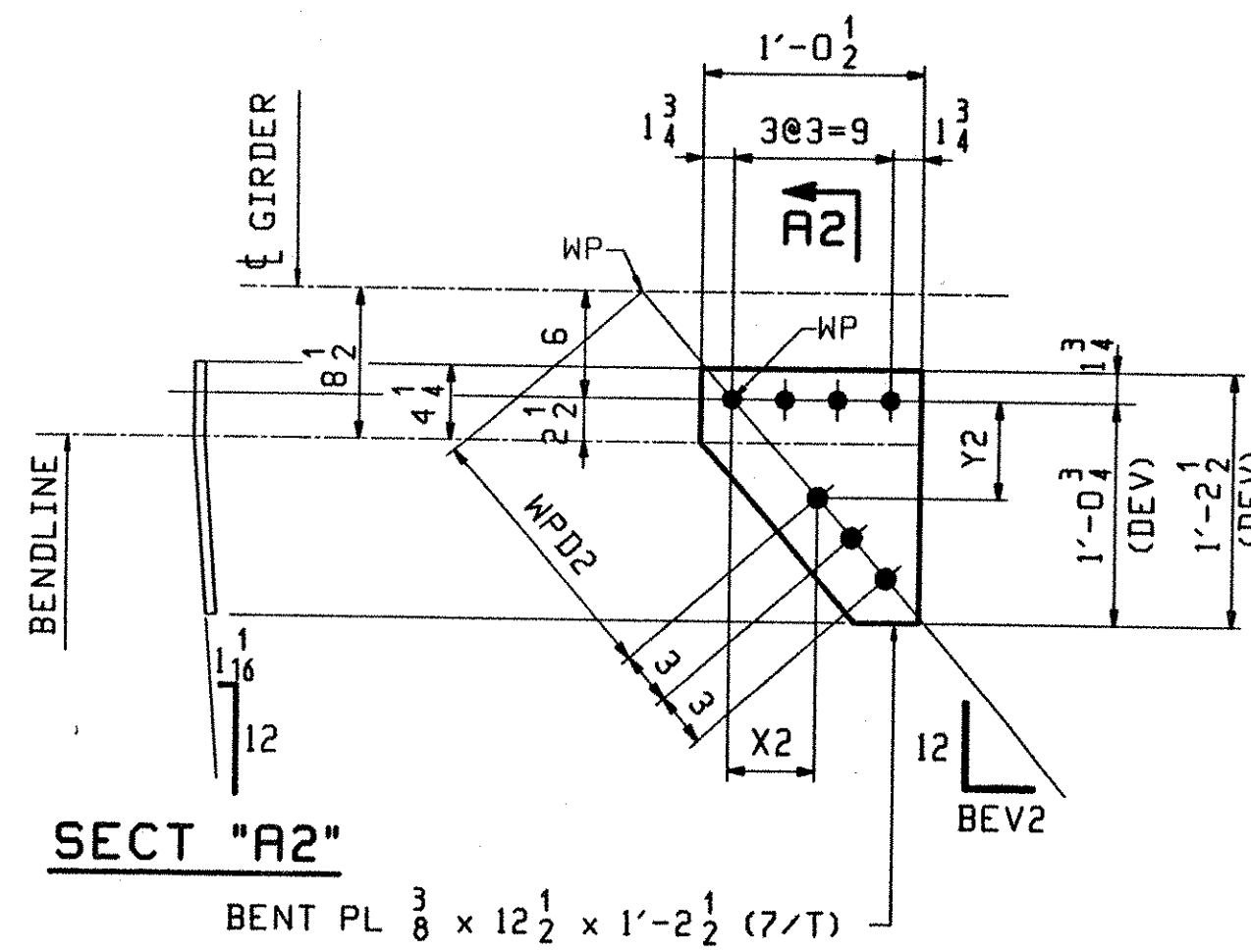
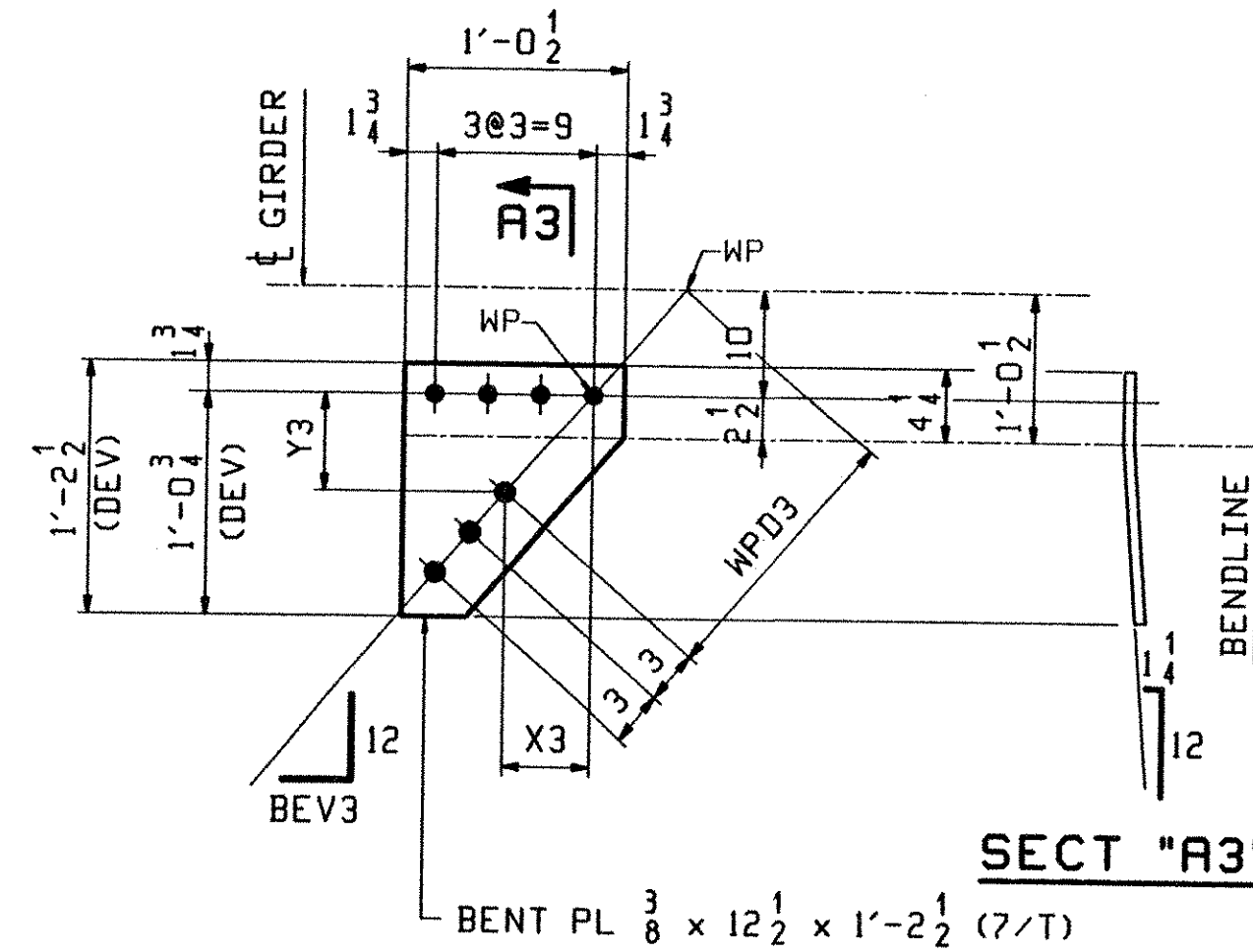


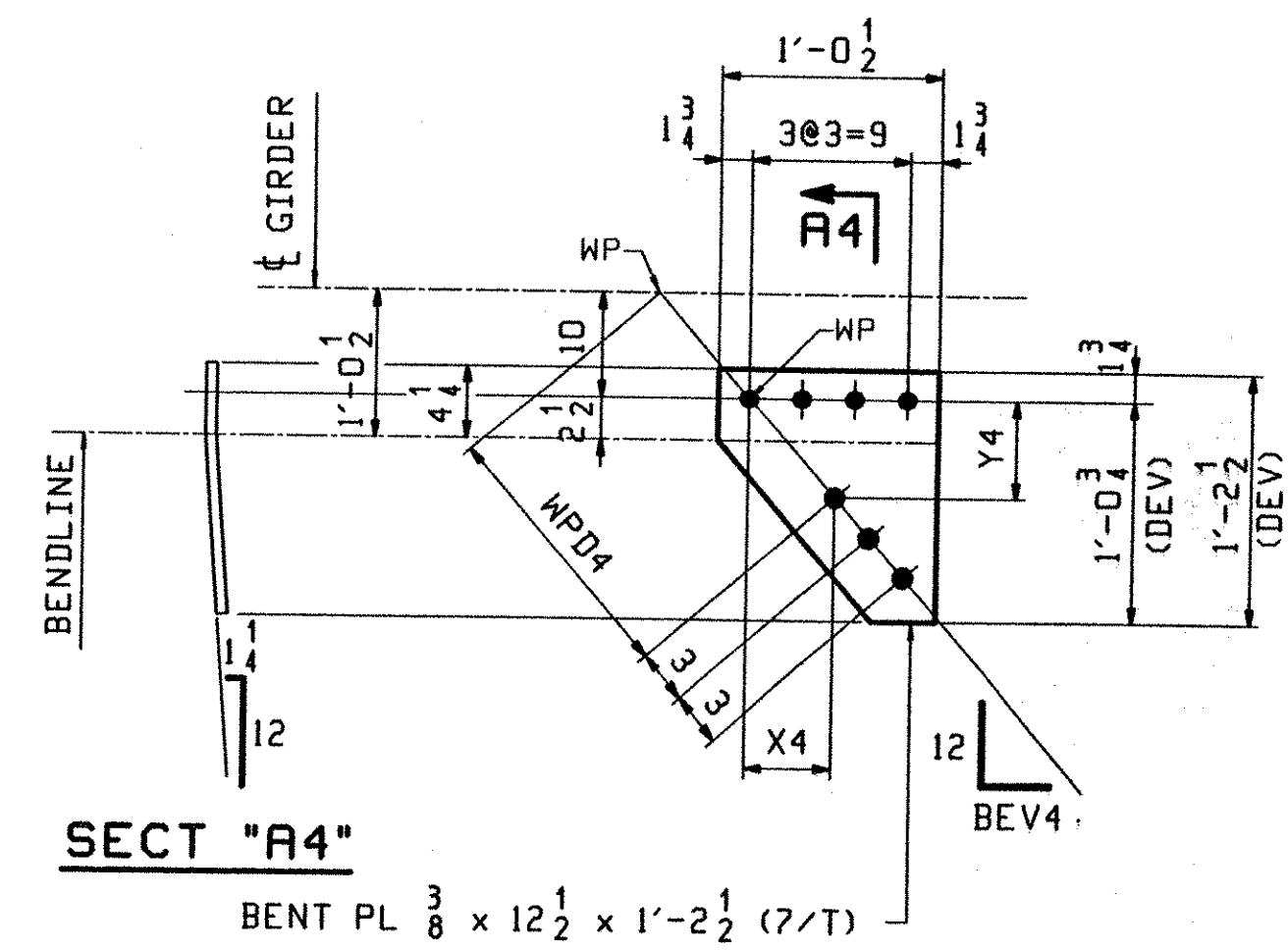
SECT "A1"



SECT "A2"



SECT "A3"



SECT "A4"

16" BTM FLANGE

MARK	REQ'D	BEV1	WPD1	Y1	X1
x2a	1	8 ¹³ / ₁₆	1'-3	6 ¹ / ₁₆	4 ¹ / ₂
x2b	1	9	1'-3	6	4 ¹ / ₂
x2c	1	9 ¹ / ₈	1'-3	5 ¹⁵ / ₁₆	4 ¹ / ₂
x2d	2	9 ⁵ / ₁₆	1'-3	5 ⁷ / ₈	4 ⁹ / ₁₆
x2g	1	9 ¹¹ / ₁₆	1'-3 1/2	6 ¹ / ₁₆	4 ⁷ / ₈
x2h	1	9 ⁷ / ₈	1'-3 1/2	9 ¹⁵ / ₁₆	4 ¹⁵ / ₁₆
x2k	1	10 ¹ / ₈	1'-3 1/2	9 ⁷ / ₈	4 ¹⁵ / ₁₆

16" BTM FLANGE

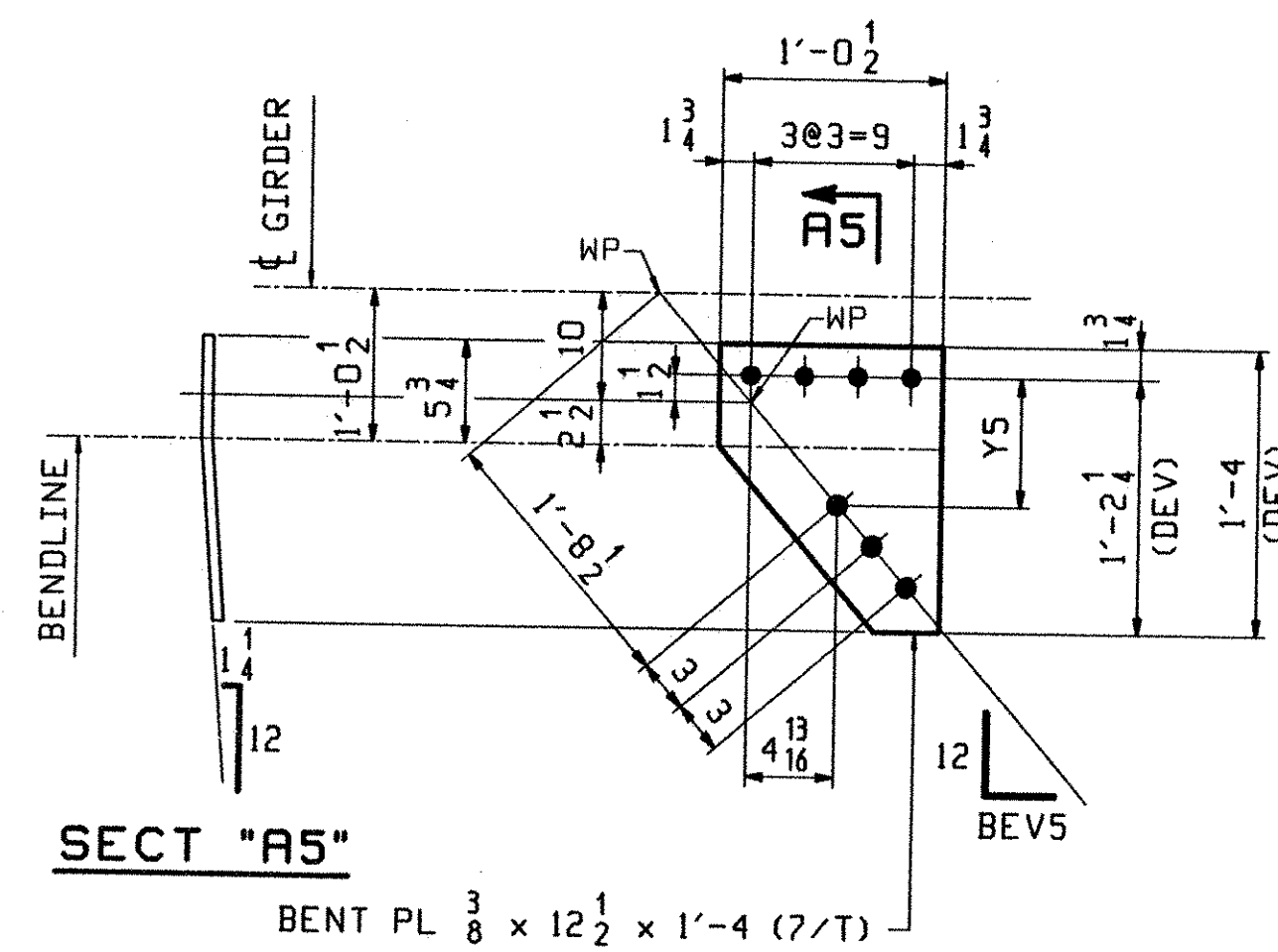
MARK	REQ'D	BEV2	WPD2	Y2	X2
x2m	1	8 ¹³ / ₁₆	1'-3	6 ¹ / ₁₆	4 ¹ / ₂
x2n	1	9	1'-3	6	4 ¹ / ₂
x2s	2	9 ¹ / ₈	1'-3	5 ¹⁵ / ₁₆	4 ¹ / ₂
x2t	1	9 ⁵ / ₁₆	1'-3	5 ⁷ / ₈	4 ⁹ / ₁₆
x2v	1	9 ¹¹ / ₁₆	1'-3 1/2	6 ¹ / ₁₆	4 ⁷ / ₈
x2w	1	9 ¹⁵ / ₁₆	1'-3 1/2	5 ¹⁵ / ₁₆	4 ¹⁵ / ₁₆
x2y	1	10 ⁵ / ₁₆	1'-3 1/2	5 ³ / ₄	4 ¹⁵ / ₁₆

24" BTM FLANGE

MARK	REQ'D	BEV3	WPD3	Y3	X3
x2ab	18	8 ¹³ / ₁₆	1'-8 1/2	6 ¹ / ₂	4 ¹³ / ₁₆
x2ac	9	8 ¹⁵ / ₁₆	1'-8 1/2	6 ⁷ / ₁₆	4 ¹³ / ₁₆
x2ad	9	9	1'-8 1/2	6 ³ / ₈	4 ¹³ / ₁₆
x2af	13	9 ¹ / ₈	1'-8 1/2	6 ⁵ / ₁₆	4 ¹³ / ₁₆
x2ag	4	9 ³ / ₁₆	1'-8 1/2	6 ¹ / ₄	4 ¹³ / ₁₆
x2ah	17	9 ⁵ / ₁₆	1'-8 1/2	6 ³ / ₁₆	4 ¹³ / ₁₆

24" BTM FLANGE

MARK	REQ'D	BEV4	WPD4	Y4	X4
x2ak	17	8 ¹³ / ₁₆	1'-8 1/2	6 ¹ / ₂	4 ¹³ / ₁₆
x2am	18	9	1'-8 1/2	6 ³ / ₈	4 ¹³ / ₁₆
x2an	15	9 ¹ / ₈	1'-8 1/2	6 ⁵ / ₁₆	4 ¹³ / ₁₆
x2as	1	9 ³ / ₁₆	1'-8 1/2	6 ¹ / ₄	4 ¹³ / ₁₆
x2at	17	9 ⁵ / ₁₆	1'-8 1/2	6 ³ / ₁₆	4 ¹³ / ₁₆



SECT "A5"

24" BTM FLANGE

MARK	REQ'D	BEV5	Y5
x2bk	1	8 ¹³ / ₁₆	8
x2bn	1	9 ¹ / ₈	7 ¹³ / ₁₆

OUT FOR APPROVAL	9.9.02																			
OUT FOR APPROVAL																				
ISSUED TO SHOP																				
FIELD & OFFICE																				
REV.	REMARKS	DATE	DWN	CHK	APP	Q.A.	NO.	DIA.	LGT	TYPE	WASHER									
MATERIAL:	M270-50W	ELECTRODES:		HOLES:	15 16	Ø (UN)		SHOP BOLTS:												
SURFACE PREP. & PAINT: -STEEL WITHIN 10'-0 ENDS OF GIRDERS SHALL BE PAINTED (SEE GNI) -ALL OTHER STEEL SHALL BE BLAST CLEANED AND LEFT UNPAINTED.																				
DESCRIPTION: GIRDER STANDARDS												DRAWN BY		DATE						
JOB: VT RTE 9 OVER THE DEERFIELD RIVER												ATD		08/19						
BRIDGE NO. 25A												CHKD BY								
SEARSBURG, VERMONT												DO		08/26						
CONTRACTOR: J.A. McDONALD												APPROV BY								
PROJ NO. PROJ. NHF 010-1(18)												SUPERVISOR		M. J. GRILL						
CUSTOMER: VERMONT AGENCY OF TRANSPORTATION												Q.A.								
CASCO BAY STEEL STRUCTURES, INC.												JOB NO.		649-BR25A-X2						
75 SPRING HILL ROAD												DRG. NO.		166 X2						
SACO, MAINE 04072												REV.								
PHONE (207) 282-7360																				
FAX. (207) 282-1179																				

RECEIVED
 CK'D BY DV OK'D BY _____
 SEP 8 2002
 RESUBMIT APPROVED _____
 BY RRW DATE 9-27-02