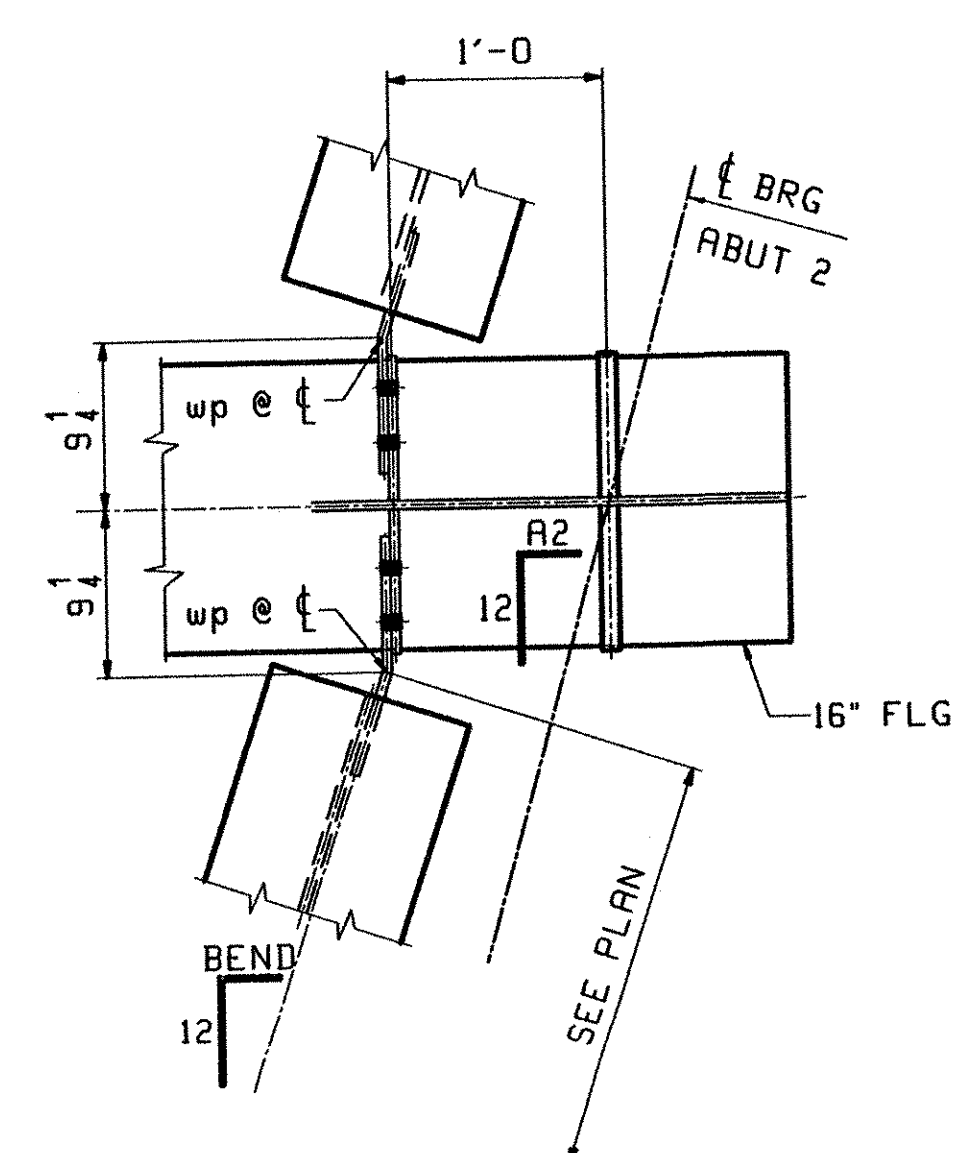


**CALCULATION PLAN FOR BRIDGE 25A**

Line	DEV LEN. ALONG BTH OF WEB		GIRDER SLOPE		PLAN BEVELS	
	LEN B	LEN C	Pier 1	ABUT 2	P1	A2
1	86'-6 1/4	90'-8 7/16	.0068	.0114	6 3/8	3 7/8
2	85'-3 1/2	90'-11 3/16	.0092	.0115	6 7/16	3 15/16
3	84'-3 9/16	86'-9 7/16	.0079	.0115	6 9/16	4
4	83'-2 13/16	96'-6 7/16	.0062	.0116	6 11/16	4 1/16
5	82'-7 1/2	96'-0 1/8	.0081	.0117	6 3/4	4 1/8

**\*\* NOTE \*\***  
 THE PURPOSE OF THIS DRAWING IS TO COORDINATE GEOMETRIC CONTROL INFORMATION. THIS DMG IS SUBMITTED FOR INFORMATION ONLY AND IS NOT INTENDED FOR SHOP FABRICATION.

- NOTES
1. LONGITUDINAL DIMENSIONS ARE SLOPING ALONG BOTB OF WEB. WITH CORRECTIONS MADE FOR GRADE & CAMBER (UN).
  2. TRANSVERSE DIMENSIONS ARE IN A HORIZ. PLANE (UN).
  3. ARROW POINTS TOWARDS LOW END OF MEMBER.
  4. ENDS OF GIRDERS AND BRG. STIFF'S ARE VERTICAL AFTER DL ROTATION.
  5. DIAPH STIFF & FIELD SPLICES ARE NORMAL TO GRADE UNLESS NOTED (V)
  6. BOTB PT NUMBERS = TOP PT NUMBERS + 300.
  7. FOR LAYOUTS SEE DMG TD1 & TD2.
  8. COMBINE CROSSFRAMES FOR DIFF IN DROPS OF +/- 1/8.
  9. CROSSFRAMES DROPS ARE CALCULATED IN THEIR FINAL POSITION.
  10. LATERAL BRACE LENGTHS ARE SLOPING CHORD WP/WP.



**CROSSFRAME WORKPOINTS @ ABUT 2**

Line	BEND
1	4 11/16
2	4 4
3	4 13/16
4	4 8
5	4 15/16

OUT FOR APPROVAL	9.9.02								
ISSUED TO SHOP									
FIELD & OFFICE									

REV.	REMARKS	DATE	DWN	CHK	APP	Q.A.	NO.	DIA.	LGT	TYPE	WASHER
MATERIAL:	M270-50W	ELECTRODES:						HOLES:	15" φ (UN)	SHOP BOLTS:	7 8" φ A325-3

DESCRIPTION:	CALCULATION PLAN	DRAWN BY	DATE
JOB:	VT RTE 9 OVER THE DEERFIELD RIVER	NL	07/16
	BRIDGE NO. 25A	CHKD BY	
	SEARSBURG, VERMONT	JAK	07/17
	CONTRACTOR: J.A. McDONALD	APPROV BY	
		SUPERVISOR	M. J. GRIFFIN

PROJ NO.	PROJ. NHF 010-1(18)	Q.A.	
CUSTOMER:	VERMONT DEPARTMENT OF TRANSPORTATION	JOB NO.	639
		DRG. NO.	166
		REV.	WS2

**CASCO BAY STEEL STRUCTURES, INC.**  
 75 SPRING HILL ROAD SACO, MAINE 04072  
 PHONE (207) 282-7360 FAX. (207) 282-1179

RECEIVED  
 SEP 09 2002  
 BY RRW DATE 9-27-02