

GENERAL NOTES

CONSTRUCTION SPECIFICATIONS

- 1). ALL MATERIAL AND WORKMANSHIP TO BE IN ACCORDANCE WITH THE STATE OF VERMONT AGENCY OF TRANSPORTATION STANDARD SPECIFICATIONS FOR CONSTRUCTION DATED 1990 WITH LATEST REVISIONS AND THE SPECIAL PROVISIONS.

DESIGN SPECIFICATIONS

- 1). AMERICAN ASSOCIATION OF STATE HIGHWAY AND TRANSPORTATION OFFICIALS (A.A.S.H.T.O) STANDARD SPECIFICATIONS FOR HIGHWAY BRIDGES, 1996 EDITION WITH LATEST REVISIONS.

MATERIAL SPECIFICATIONS

- 1). UNLESS NOTED, ALL STEEL TO BE AASHTO M270 GRADE 50W (ASTM A709-50W).
- 2). HIGH STRENGTH BOLTS: AASHTO M164 (ASTM A325) 7/8" DIA. TYPE 3 BOLTS SHALL BE USED FOR UNPAINTED CONNECTIONS. TYPE 1 (GALV.) BOLTS SHALL BE USED FOR PAINTED CONNECTIONS.
- 3). ALL GIRDER WEB & FLANGES, CROSSFRAMES AND CONNECTION PLATES SHALL BE CHARPY V NOTCH TESTED IN ACCORDANCE WITH THE REQUIREMENTS OF VERMONT STANDARD SPECIFICATIONS. DRAWINGS SHALL CALL OUT "H2-3" FOR EACH APPLICABLE ITEM IN THE BILLS OF MATERIAL.

FABRICATION

- 1). ALL HOLES SHALL BE PUNCHED OR DRILLED FULL SIZE (UN). HOLES NOTED "DA" SHALL BE DRILLED DURING ASSEMBLY WITH PARTS ASSEMBLED.
- 2). STUDS ARE FURNISHED AND FIELD APPLIED BY OTHERS.

WELDING

- 1). THE CONFIGURATION OF THE WELD JOINTS AND ALL WELDING PROCEDURES SHALL BE IN ACCORDANCE WITH AASHTO/AWS D1.5-02 BRIDGE WELDING CODE AND IN ADDITION TO SPECIFICATIONS SHOWN ABOVE. ALL WELDING WILL BE DETAILED TO PRE-QUALIFIED JOINTS, UNLESS PROHIBITED BY THE DESIGNER.
- 2). WELDING OF MAIN LOAD CARRYING MEMBERS AND ATTACHMENTS SHALL BE PERFORMED USING THE AUTOMATIC SUBMERGED ARC & SHIELDED METAL ARC PROCESSES. ALL WELDS ARE CONTINUOUS U.N.
- 3). NON DESTRUCTIVE TESTING OF WELDS SHALL BE IN ACCORDANCE WITH THE REFERENCED SPECIFICATION.

CLEANING:

- 1). ALL STEEL SHALL BE BLAST CLEANED AS PER SSPC SP-10 PER SPEC. 506.14(a)
- 2). 1/16" RADIUS ON ALL EDGES OF PAINTED SURFACES.

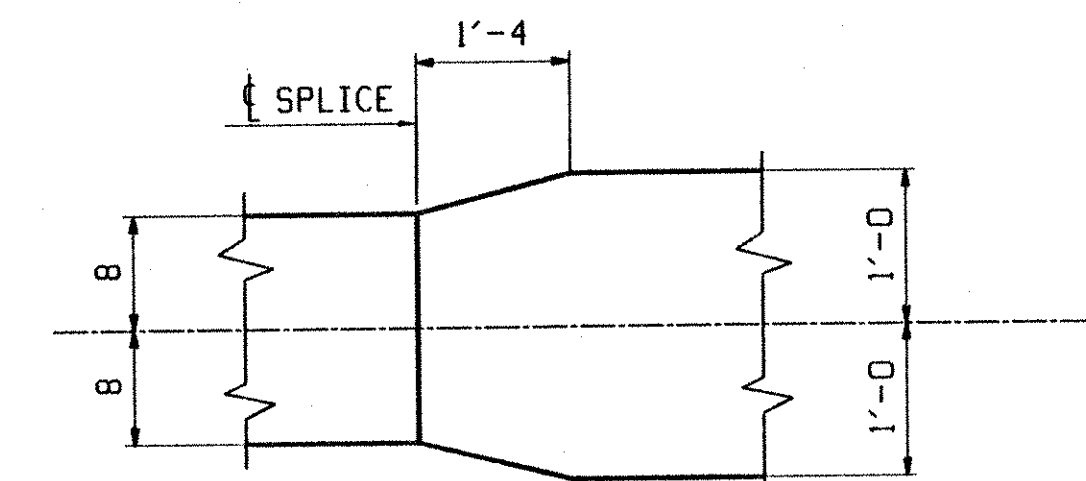
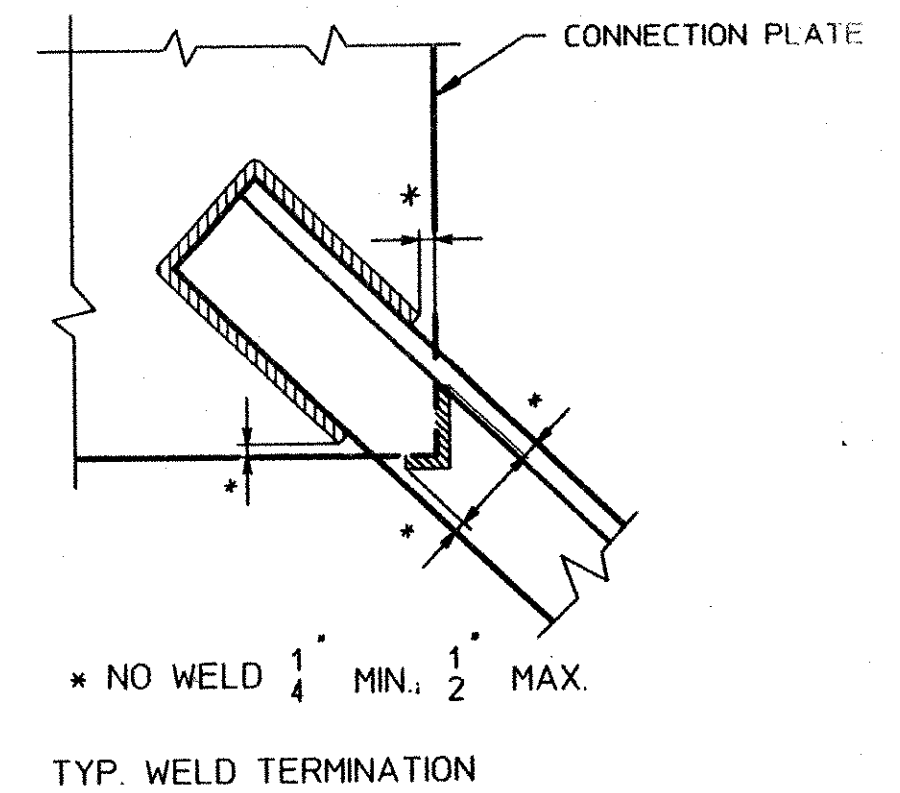
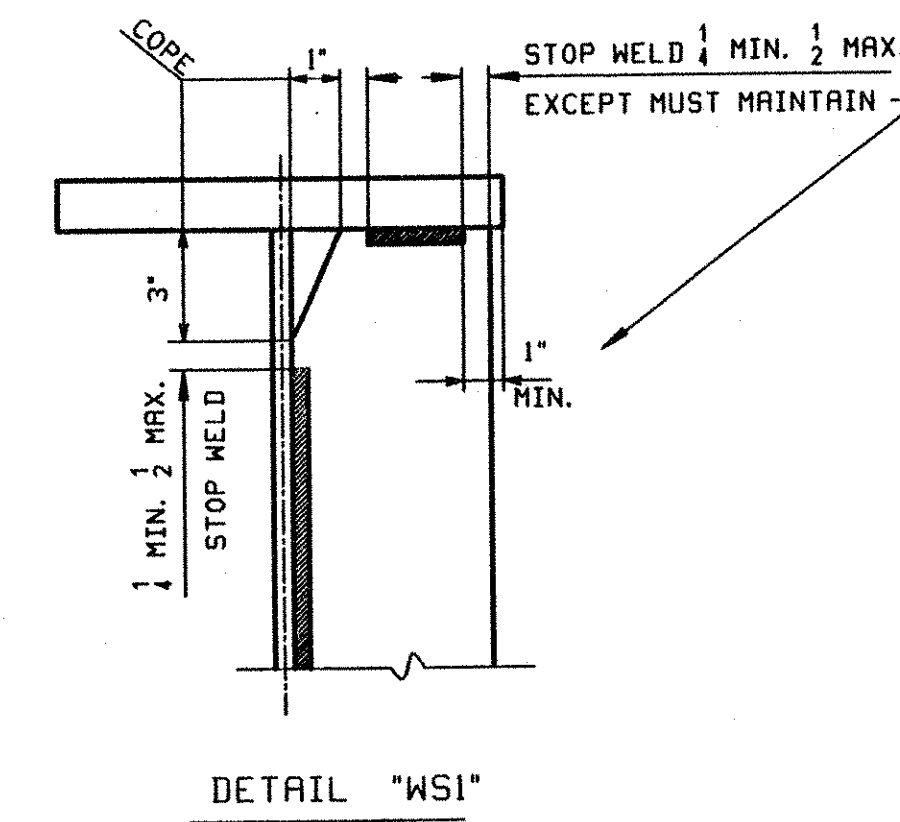
PAINTING

- 1). ALL STEEL COMPONENTS WITHIN 10'-0" OF END OF GIRDERS AS SHOWN IN SKETCH "PI" SHALL BE COATED WITH THE PROTECTIVE SYSTEM ACCORDING TO SECTION 513 OF THE SPECIFICATION. THE PAINT COLOR SHALL BE BROWN. PAINT SYSTEM MUST BE SYSTEM LISTED ON THE QUALIFIED PRODUCT LIST SECTION 513.02 BROWN COLOR CHIP #20059.

FIELD CONNECTIONS

- 1). ALL FIELD CONNECTIONS SHALL BE MADE WITH 7/8" DIAMETER HIGH STRENGTH A-325 BOLTS, INSTALLED PER SECTION 506.19(c).
- 2). BOLTS SHALL HAVE HEAVY HEX NUT, HEX HEAD, & ONE FLAT WASHER EACH (WASHER TO BE PLACED UNDER TURNED ELEMENT).
- 3). PIECE MARKS WILL BE LOCATED AS SHOWN ON ERECTION DRAWINGS.

PAINT SYSTEM



WIDTH TRANSITION DETAIL "WT"

NOTE TO ENGINEER:
THESE NOTES ARE NOT INTENDED TO BE ALL INCLUSIVE AND COMPLIANCE WITH RELEVANT SPECIFICATIONS REMAIN UNCHANGED.

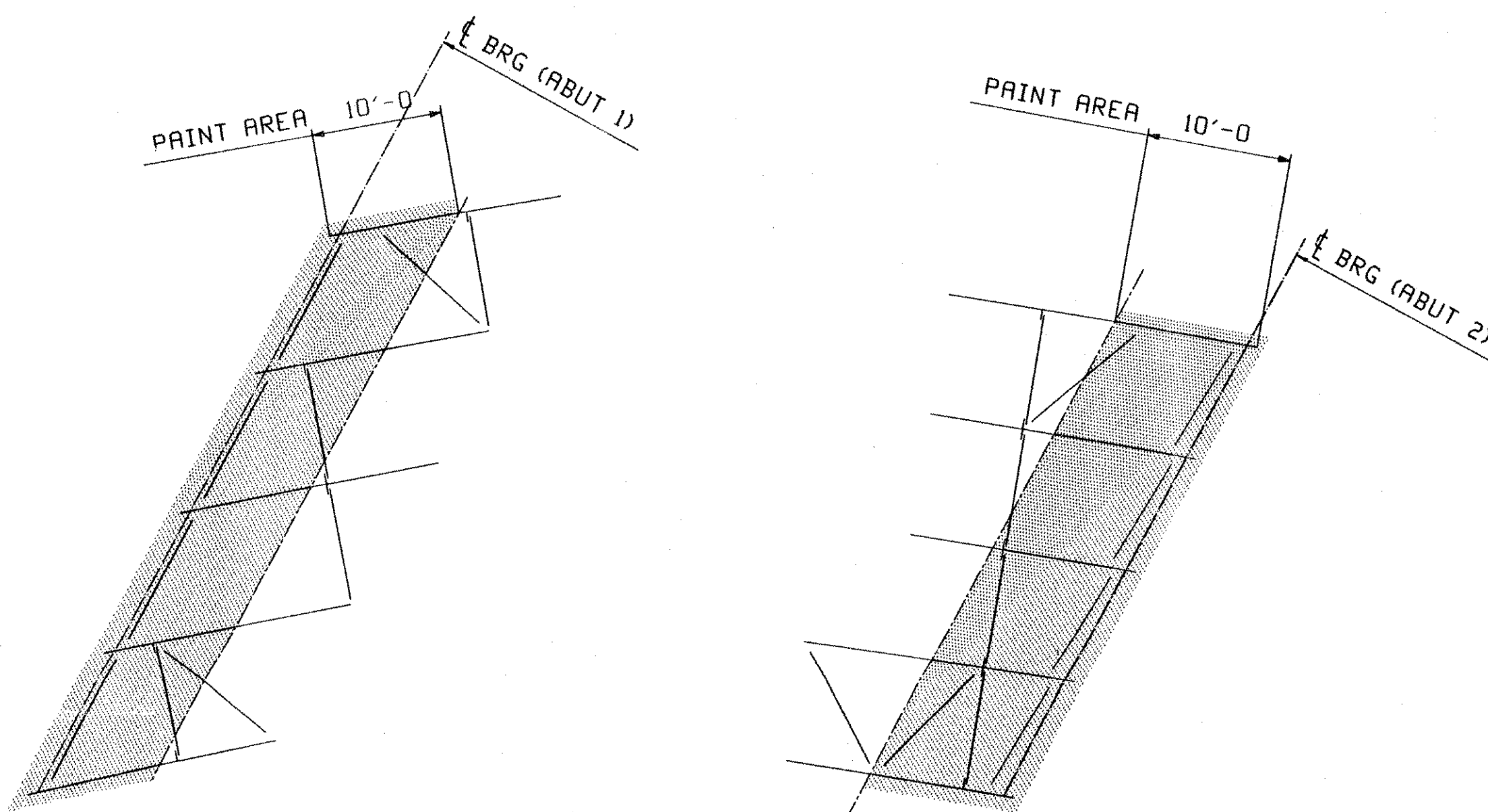
OUT FOR APPROVAL	9-9-02								
OUT FOR APPROVAL									
ISSUED TO SHOP									
FIELD & OFFICE									

REV.	REMARKS	DATE	DWN	CHK	APP	Q.A.	NO.	DIA.	LGT	TYPE	WASHER
	MATERIAL:										
	ELECTRODES:										
	HOLES:										
	SHOP BOLTS:										

SURFACE PREP. & PAINT:

DESCRIPTION:	GENERAL NOTES	DRAWN BY	DATE
JOB: VT RTE 9 OVER THE DEERFIELD RIVER		HL	07/17
BRIDGE NO. 25A		CHKD BY	
SEARSBURG, VERMONT		DO	08/05
CONTRACTOR: J.A. McDONALD		APPROV BY	
PROJ NO. PROJ. NHF 010-1(K18)		SUPERVISOR	H. J. GALLI
CUSTOMER: VERMONT AGENCY OF TRANSPORTATION		Q.A.	
CASCO BAY STEEL STRUCTURES, INC.		JOB NO.	DRG. NO.
75 SPRING HILL ROAD		166	GNI
SACO, MAINE 04072			REV. 1
PHONE (207) 282-7360			
FAX. (207) 282-1179			

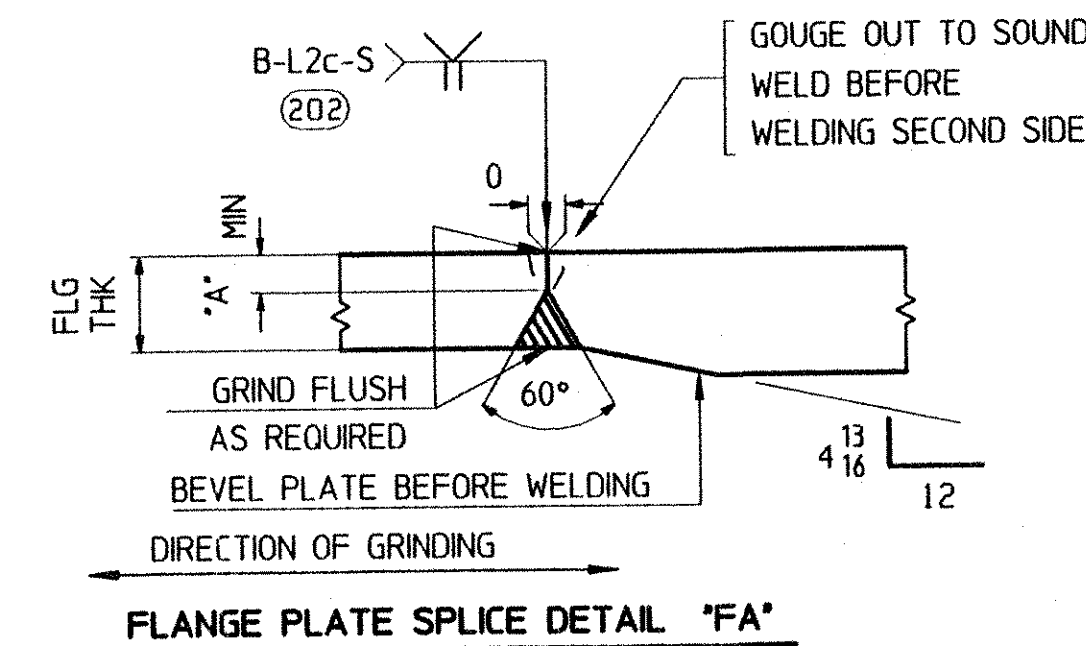
RECEIVED
OK'D BY DV OK'D BY
SEP 09 2002
RESUBMIT APPROVED AS NOTED
BY RRW DATE 9-27-02



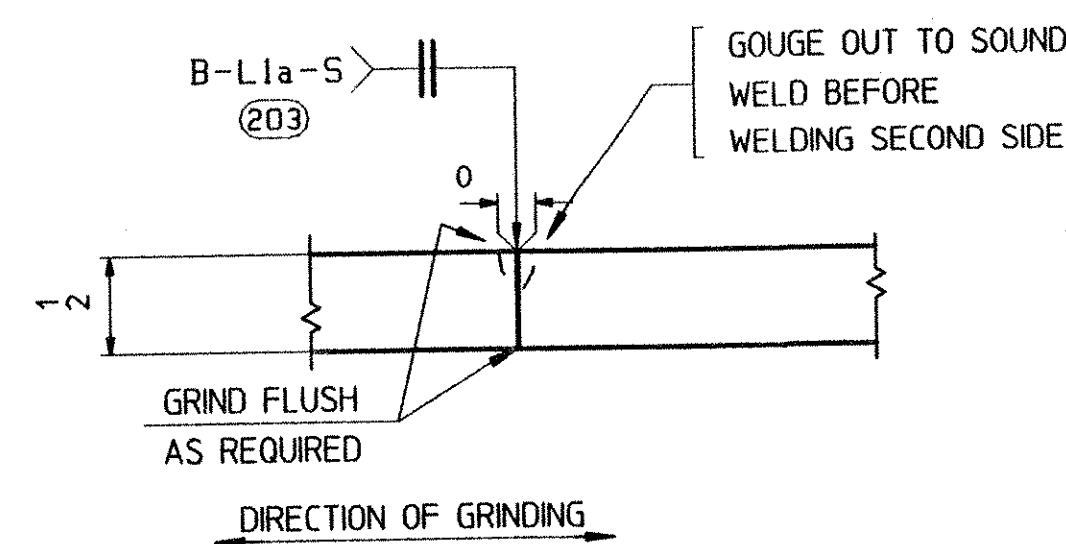
PAINT SKETCH "PI"

- NOTES:**
- ALL STEEL WITHIN 10'-0" OF THE END OF GIRDER SHALL BE PAINTED.
 - FOR LATERAL BRACING AND INT CROSSFRAMES THAT FALL PARTIALLY IN PAINTED AREA, PAINT THE ENTIRE PIECE.

FLG THK	'A'
1"	1/4
1 1/4 - 1 1/2	3/8



FLANGE PLATE SPLICE DETAIL "FA"



WEB PLATE SPLICE DETAIL "WA"