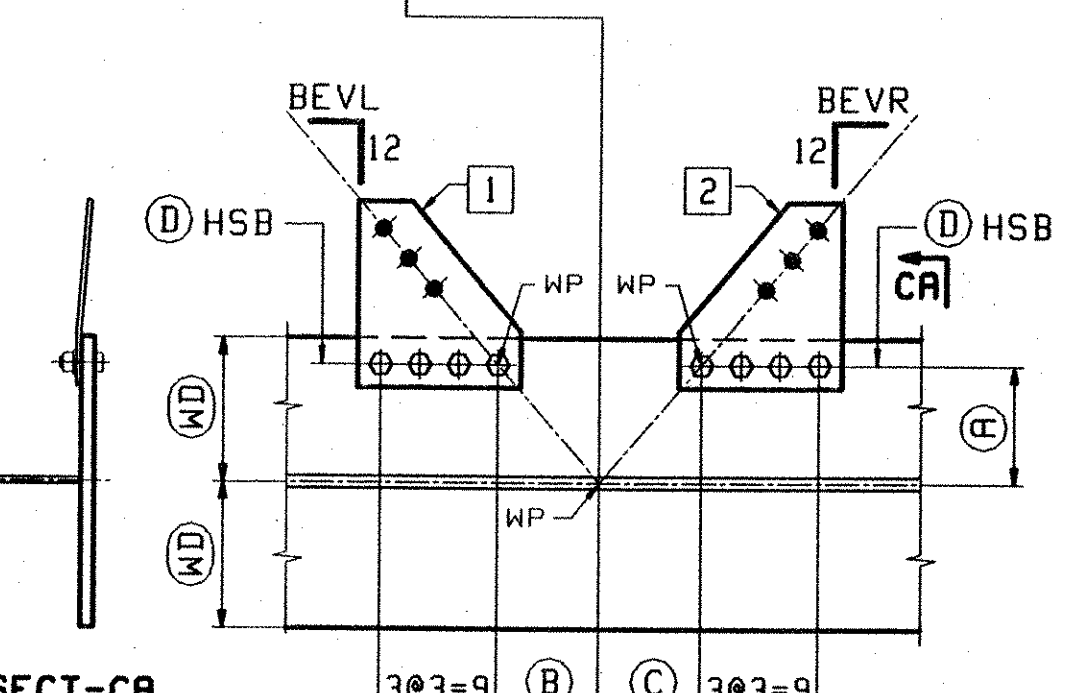
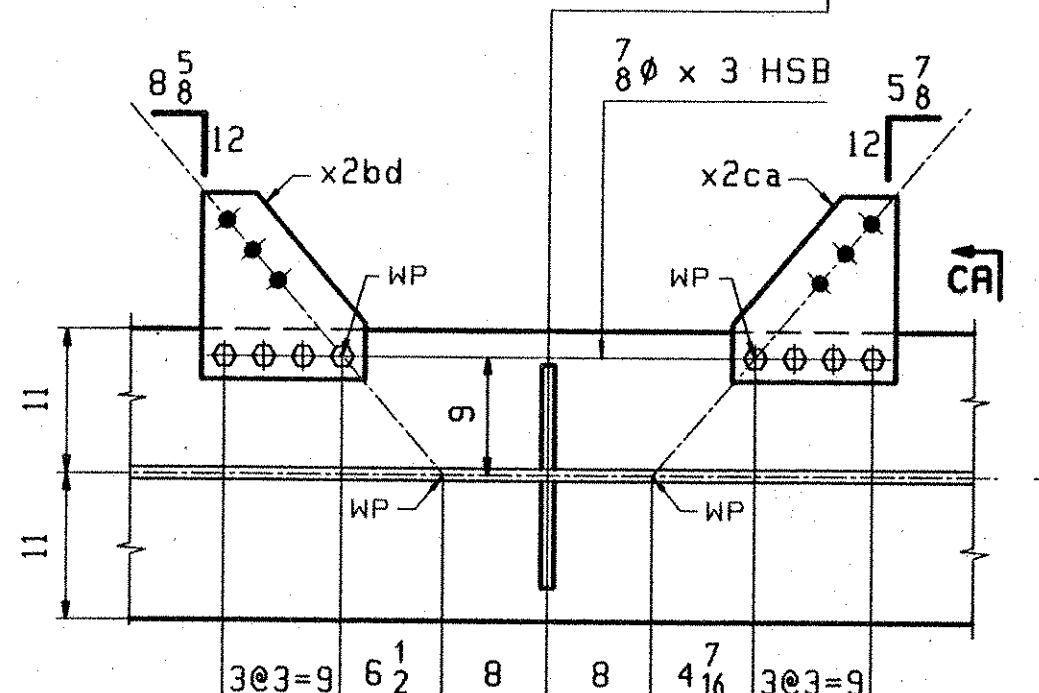
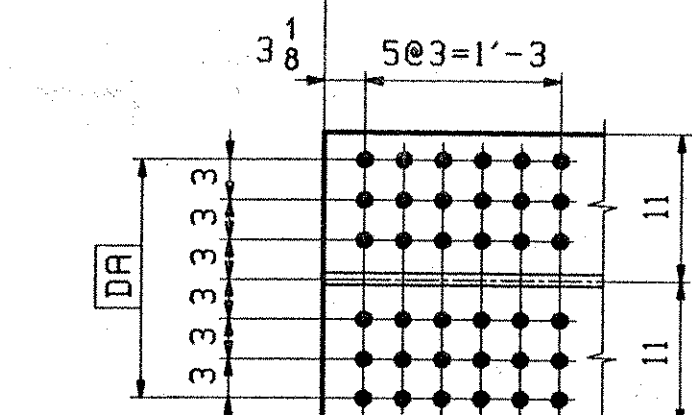
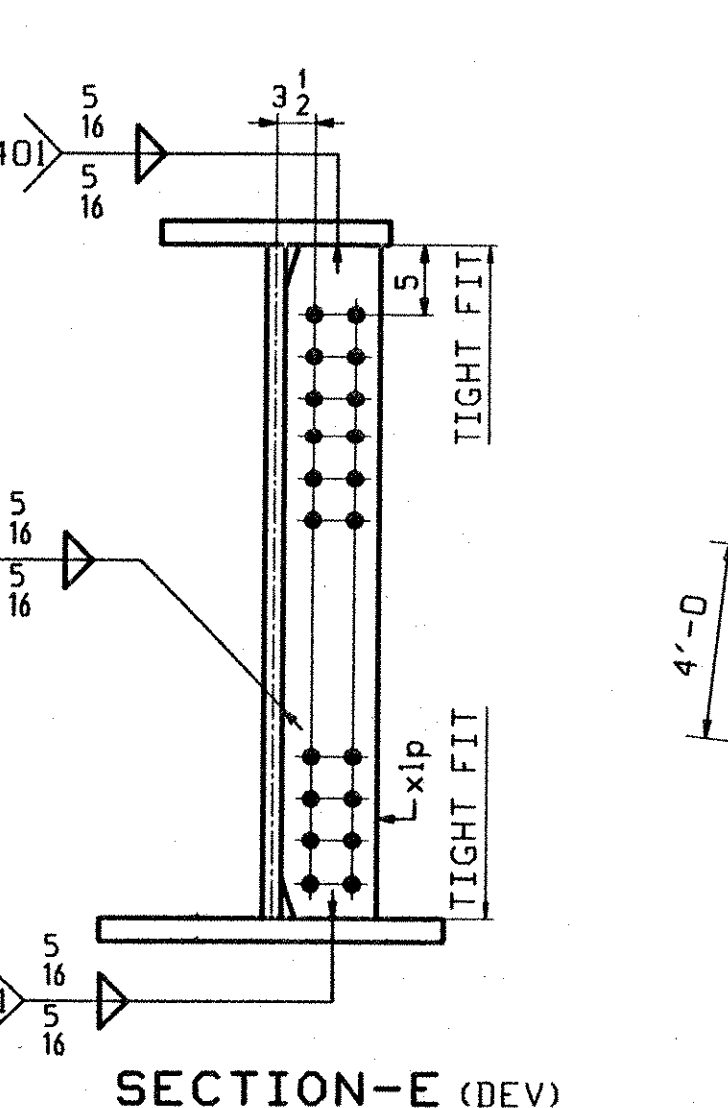
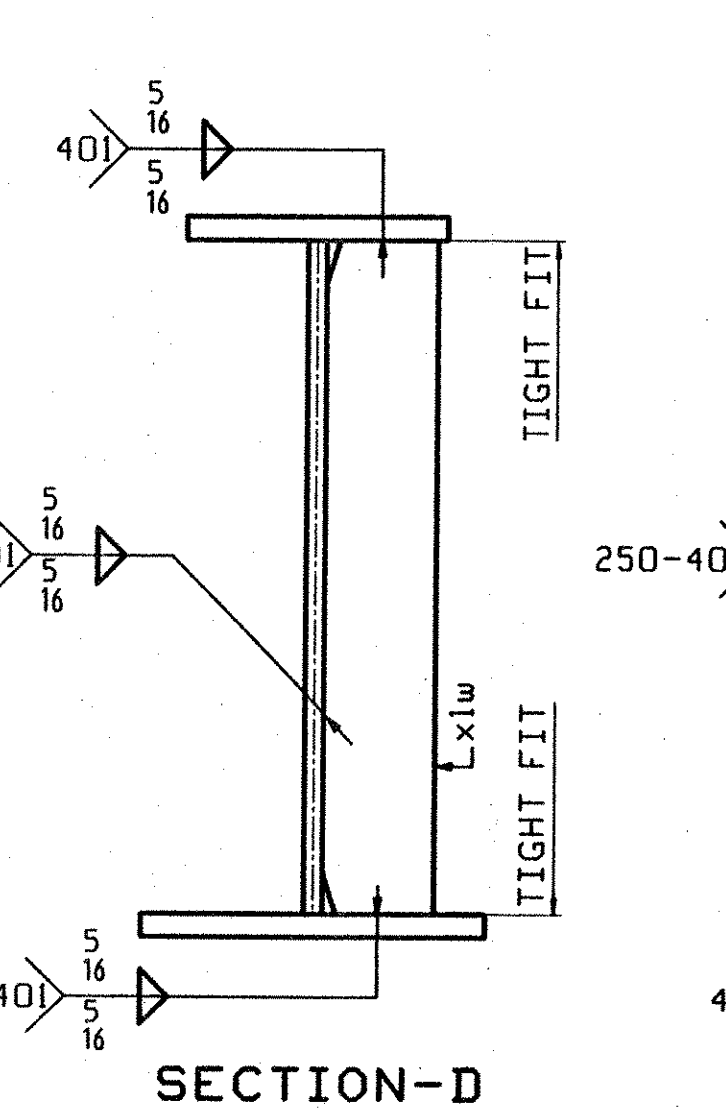
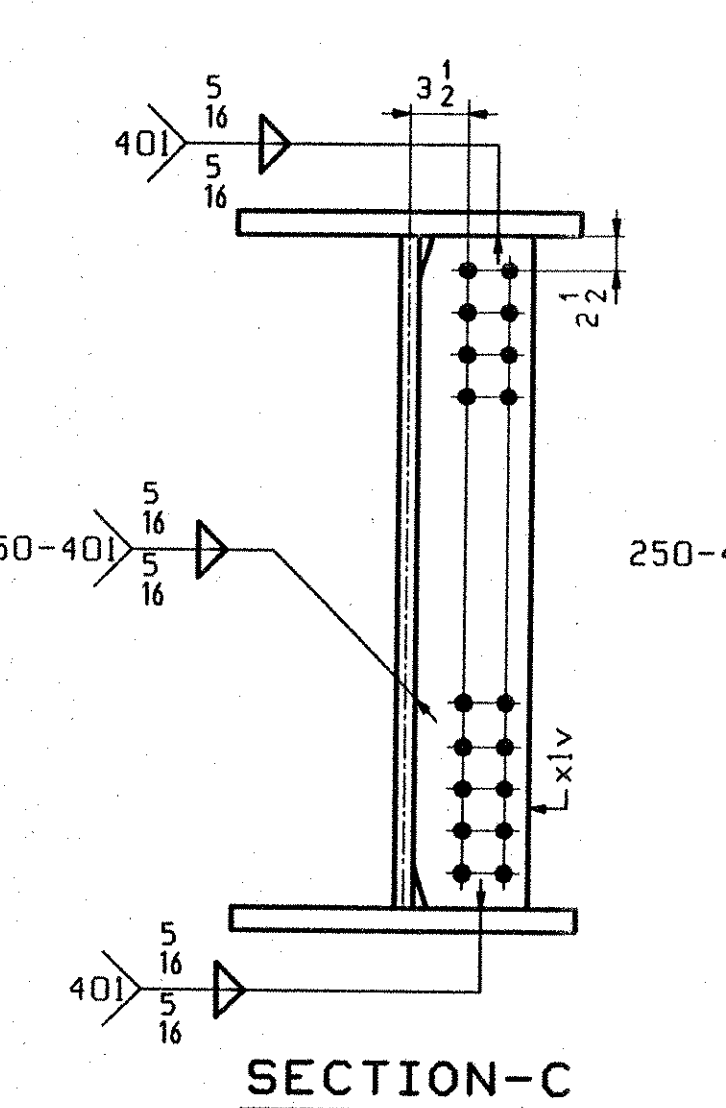
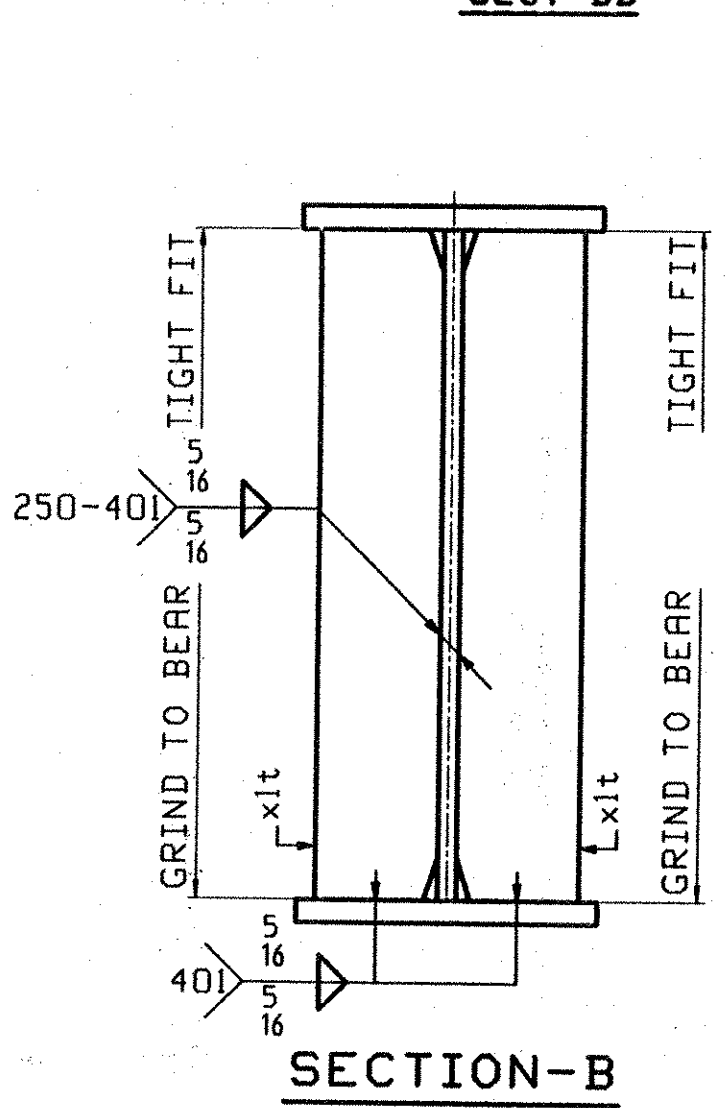
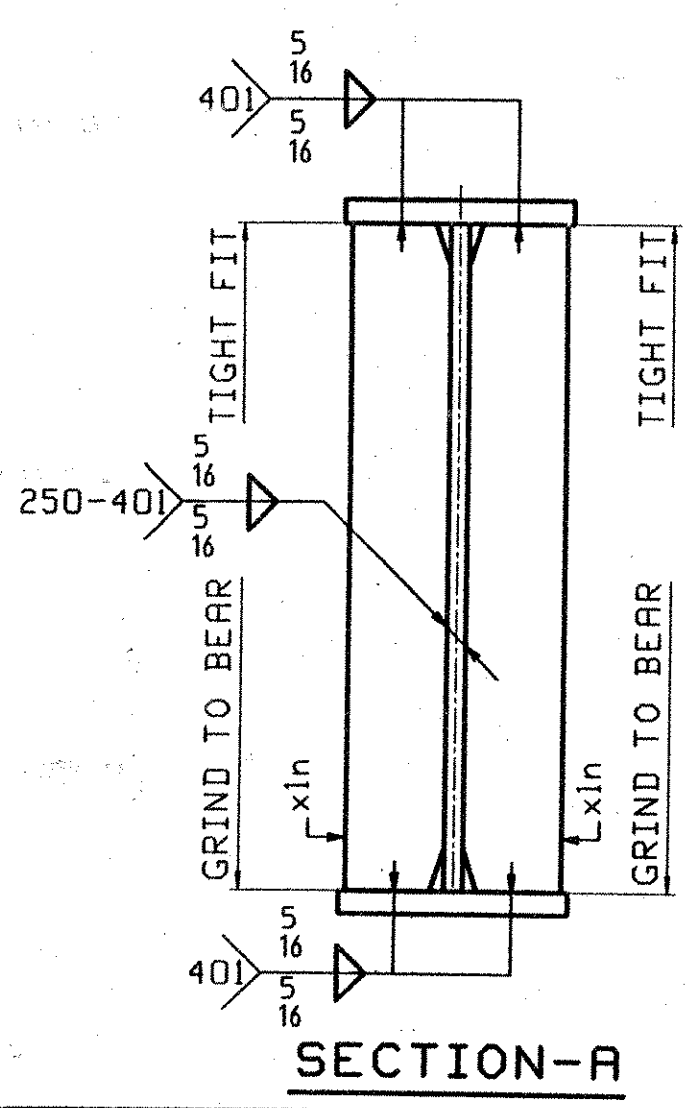
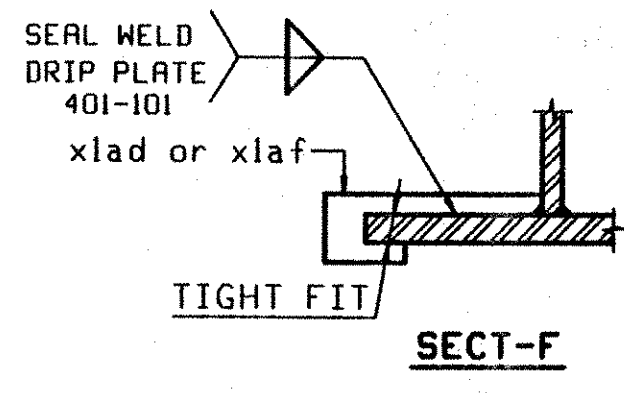
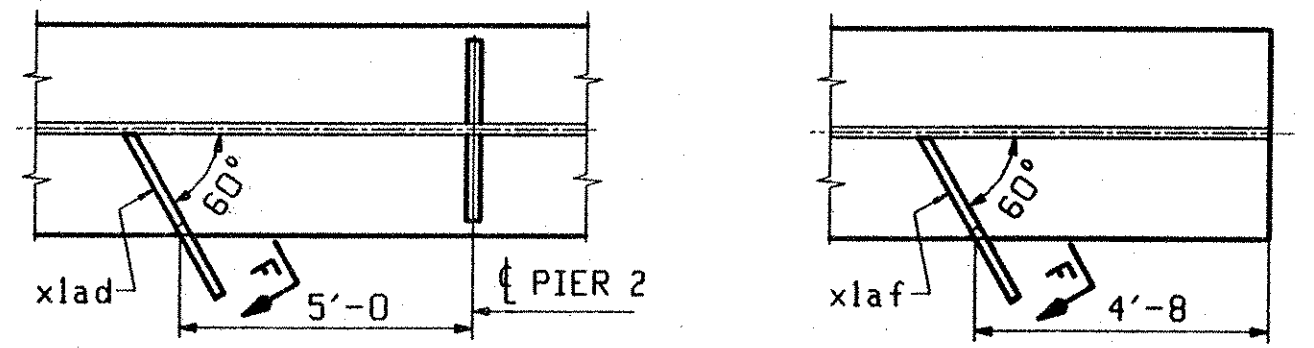


ABM INFO		BILL OF MATERIAL				JOB NO.		DRAWING NO.		REV
PAGE	LINE	MARK	QTY	MARK	MATERIAL	LENGTH FT	INCHES	REMARKS	WT	PROCUREMENT NOTES
		G5C	1		GIRDER				17571	
5	L	1	wa		PL 1/2 x 49 13/16	73	4 1/2	(M270-50HT2) (H2-3)		
4	S	1	ta		PL 1/2 x 16	8	2 1/2	(M270-50HT2) (H2-3)		
2	N	1	tb		PL 1/2 x 22	26	6 1/2	(M270-50HT2) (H2-3)		
3	N	1	tc		PL 1/2 x 16	38	6 1/2	(M270-50HT2) (H2-3)		
2	E	1	ba		PL 1/2 x 22	34	6 1/2	(M270-50HT2) (H2-3)		
3	N	1	bb		PL 1/2 x 16	38	7 1/2	(M270-50HT2) (H2-3)		
7	R	4	xlv		PL 1/2 x 8	4	0	(M270-50HT2) (H2-3)		
7	P	2	xlt		PL 1 x 10	4	0	(M270-50HT2) (H2-3)		
7	N	2	xln		PL 1 x 8	4	0	(M270-50HT2) (H2-3)		
7	V	1	x2bm		PL 3/8 x 12 1/2	1	2 1/2	BENT		
7	V	1	x2cd		PL 3/8 x 12 1/2	1	2 1/2	BENT		
7	V	1	x2bd		PL 3/8 x 12 1/2	1	2 1/2	BENT		
7	V	1	x2ca		PL 3/8 x 12 1/2	1	2 1/2	BENT		
7	V	1	x2bc		PL 3/8 x 12 1/2	1	2 1/2	BENT		
7	V	1	x2cf		PL 3/8 x 12 1/2	1	2 1/2	BENT		
7	V	1	x2v		PL 3/8 x 12 1/2	1	2 1/2	BENT		
7	V	1	x2av		PL 3/8 x 12 1/2	1	2 1/2	BENT		
7	V	1	x2b		PL 3/8 x 12 1/2	1	2 1/2	BENT		
7	V	1	x2ab		PL 3/8 x 12 1/2	1	2 1/2	BENT		
7	R	1	xlw		PL 1/2 x 8	4	0	(M270-50HT2) (H2-3)		
7	R	1	xlp		PL 1/2 x 8	4	0	(M270-50HT2) (H2-3)		
7	T	1	xlad		PL 1/2 x 3 1/4	1	2 1/2			
7	T	1	xlaf		PL 1/2 x 3	0	11			
9	M	16			7/8 HSB	0	2 1/4	(A325-3)		
9	N	24			9/16 HSB	0	3	(A325-3)		
9	R	40			7/8 HSW			(F436M)		



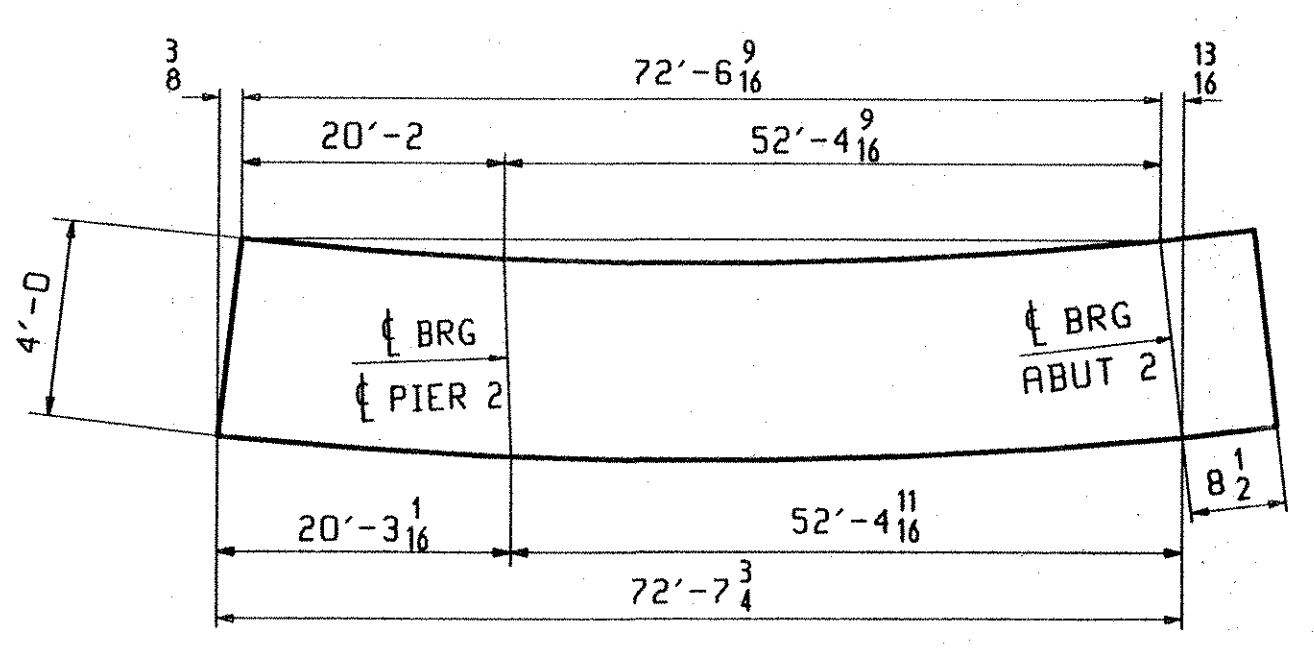
SECT	(WD)	(A)	(B)	(C)	BEVL	BEVR	1	2	(D)
BA	11	9	6 7/8	6 5/16	9 3/16	8 7/16	x2bm	x2cd	7/8 x 3
BC	11	9	6 7/8	6 7/16	8 9/16	8 9/16	x2bc	x2cf	7/8 x 3
BD	8	6	5 1/16	5 1/16	10 1/16	10 1/16	x2v	x2av	7/8 x 2 3/4
BE	8	6	3 3/16	3 3/16	6 3/8	6 3/8	x2b	x2ab	7/8 x 2 3/4

RECEIVED
 OK'D BY: DV OK'D BY:
 AUG 26 2002
 RESUBMIT APPROVED
 BY: RW DATE 9-17-02



ONE - GIRDER - G5C (DEV)

1. FOR GIRDER STANDARD DETAILS SEE DWG. XI & X2.
2. FOR CAMBER DIAGRAM SEE DWG. C3.
3. FOR FLANGE DIAGRAM SEE DWG. F3 & F4.
4. FOR GENERAL NOTES SEE SHT. GNI.



ORIENTATION DIAGRAM FOR CAMBER SEE SHEET C3

OUT FOR APPROVAL	8-23-02								
OUT FOR APPROVAL									
ISSUED TO SHOP									
FIELD & OFFICE									

REV.	REMARKS	DATE	DWN	CHK	APP	Q.A.	NO.	DIA.	LGT	TYPE	WASHER
MATERIAL:	ELECTRODES:	HOLES:	SHOP BOLTS:								
M270-50W		15/16" (UN)	AS NOTED								

SURFACE PREP. & PAINT:
 -STEEL WITHIN 10'-0" ENDS OF GIRDERS SHALL BE PAINTED (SEE GNI)
 -ALL OTHER STEEL SHALL BE BLAST CLEANED AND LEFT UNPAINTED.

DESCRIPTION:	GIRDER - G5C	DRAWN BY:	ATD	DATE:	08/18	
JOB:	VT RTE 9 OVER THE DEERFIELD RIVER	CHKD BY:	DO	DATE:	08/20	
	BRIDGE NO. 25	APPROV BY:				
	SEARSBURG, VERMONT	SUPERVISOR:	M. J. GATTI			
	CONTRACTOR: J.A. McDONALD	Q.A.:				
PROJ NO.:	PROJ. NHF 010-1(18)	JOB NO.:	165	DRG. NO.:	15	
CUSTOMER:	VERMONT AGENCY OF TRANSPORTATION	PHONE (207) 282-7360	SACO, MAINE 04072	FAX (207) 282-1179	REV.:	△