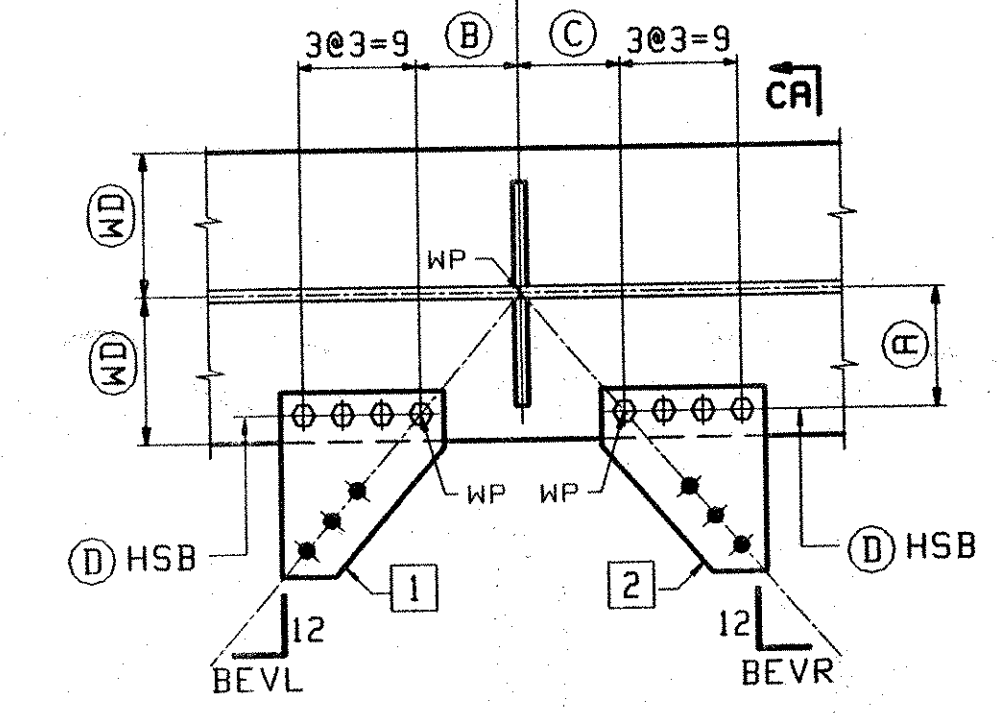
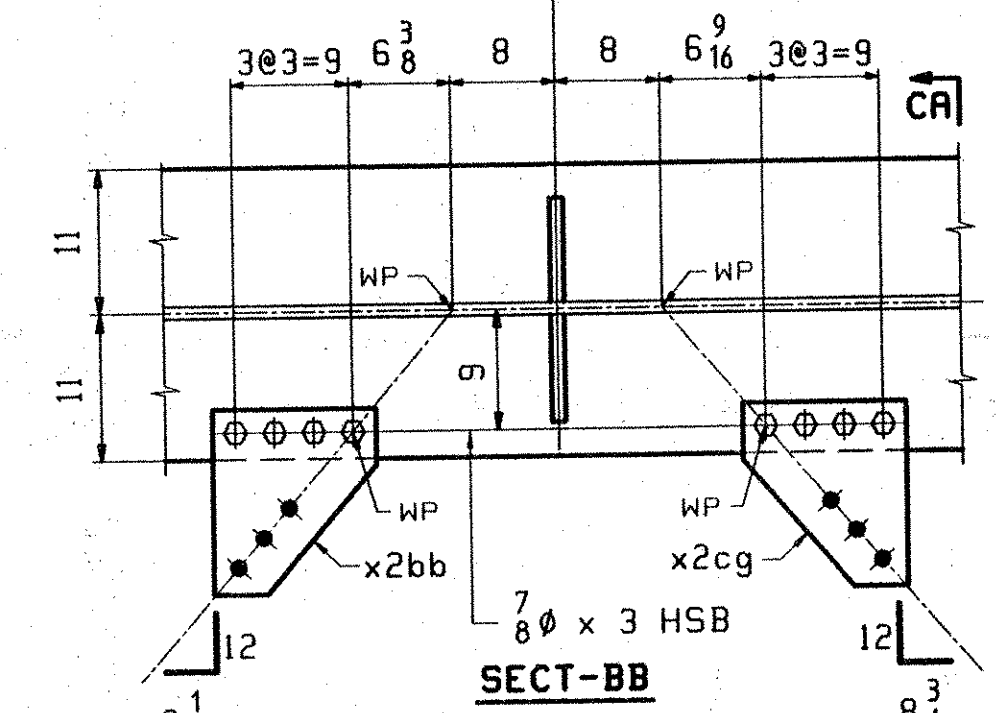
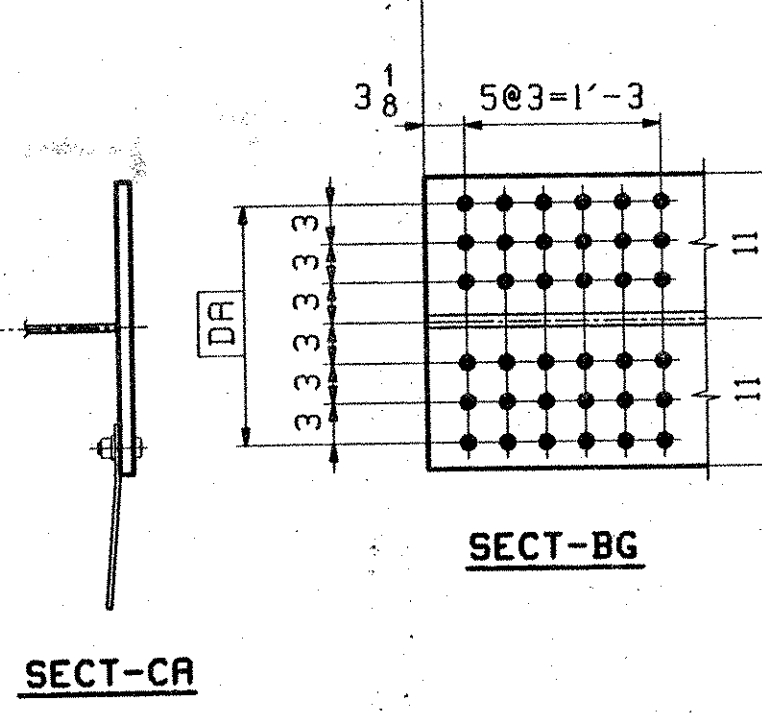


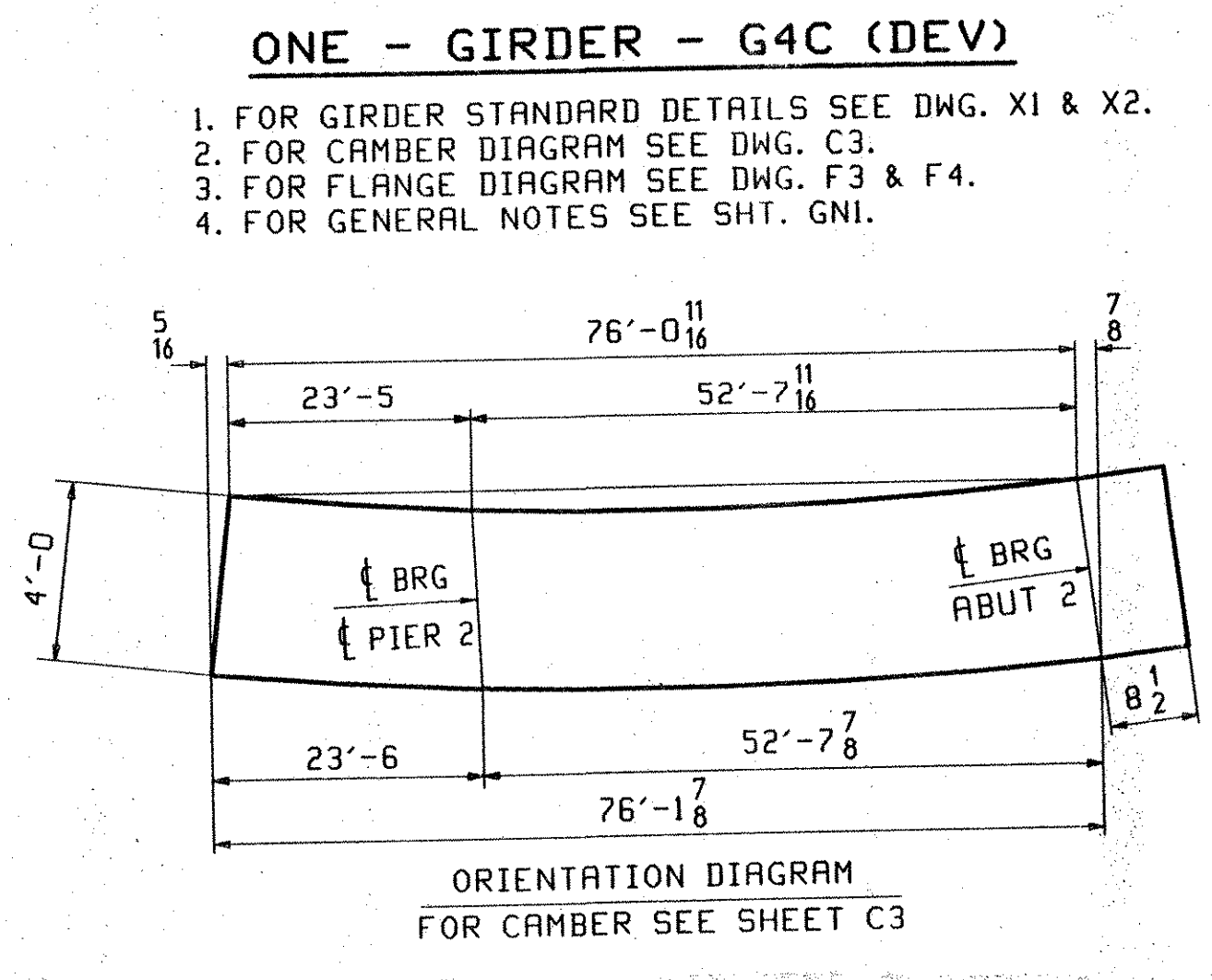
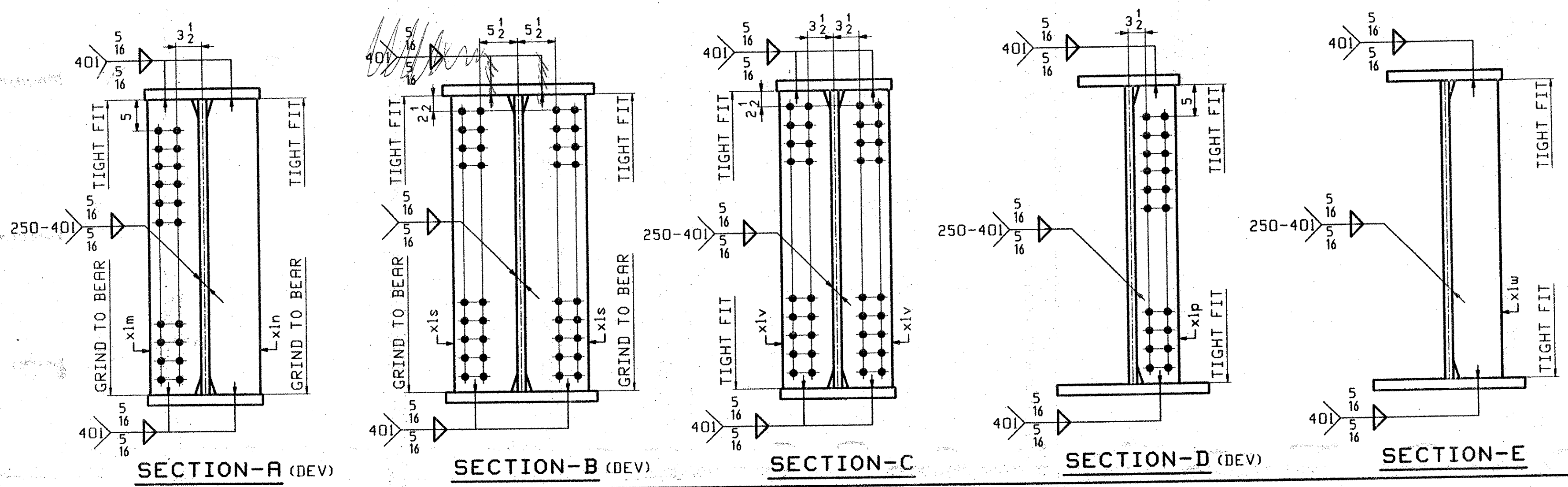
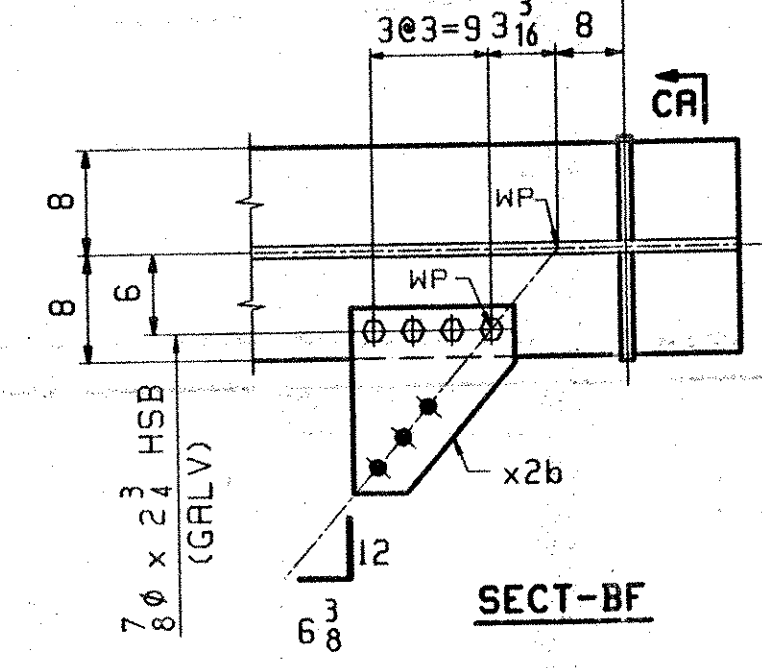
ABH INFO		SHIP	BILL OF MATERIAL				JOB NO.	DRAWING NO.	REV.
PAGE	LINE	MARK	QTY	MARK	MATERIAL	LENGTH FT INCHES	REMARKS	WT	PROCUREMENT NOTES
		G4C	1		GIRDER			18399	
5	E		1	wa	PL 1/2 x 49 15/16	76 10 3/8	(M270-50HT2) (H2-3)		
4	N		1	ta	PL 8 x 16	11 5/8	(M270-50HT2) (H2-3)		
2	S		1	tb	PL 1 1/4 x 22	24 0 1/16	(M270-50HT2) (H2-3)		
3	L		1	tc	PL 1 x 16	41 3 1/16	(M270-50HT2) (H2-3)		
2	C		1	ba	PL 1 1/4 x 22	35 2 1/16	(M270-50HT2) (H2-3)		
3	J		1	bb	PL 1 x 16	41 7 1/16	(M270-50HT2) (H2-3)		
7	R		8	xlv	PL 1/2 x 8	4 0	(M270-50HT2) (H2-3)		
7	P		2	xls	PL 1 x 10	4 0	(M270-50HT2) (H2-3)		
7	N		1	xlm	PL 1 x 8	4 0	(M270-50HT2) (H2-3)		
7	N		1	xln	PL 1 x 8	4 0	(M270-50HT2) (H2-3)		
7	V		1	x2bs	PL 3/8 x 12 1/2	1 2 2	BENT		
7	V		1	x2cs	PL 3/8 x 12 1/2	1 2 2	BENT		
7	V		1	x2bb	PL 3/8 x 12 1/2	1 2 2	BENT		
7	V		1	x2cg	PL 3/8 x 12 1/2	1 2 2	BENT		
7	V		1	x2a	PL 3/8 x 12 1/2	1 2 2	BENT		
7	V		1	x2ag	PL 3/8 x 12 1/2	1 2 2	BENT		
7	V		1	x2g	PL 3/8 x 12 1/2	1 2 2	BENT		
7	V		1	x2aw	PL 3/8 x 12 1/2	1 2 2	BENT		
7	V		1	x2w	PL 3/8 x 12 1/2	1 2 2	BENT		
7	V		1	x2ac	PL 3/8 x 12 1/2	1 2 2	BENT		
7	V		1	x2b	PL 3/8 x 12 1/2	1 2 2	BENT		
7	R		1	xlw	PL 2 x 8	4 0	(M270-50HT2) (H2-3)		
7	R		1	xlp	PL 2 x 8	4 0	(M270-50HT2) (H2-3)		
9	C		4		7/8 HSB	0 2 3/4	(A325-1) GALV		
9	G		4		7/8 HSW		(F436) GALV		
9	M		24		7/8 HSB	0 2 3/4	(A325-3)		
9	N		16		7/8 HSB	0 3	(A325-3)		
9	R		40		7/8 HSW		(F436W)		

SEE CAMBER DIAGRAM

NO PAINT BTM & EDGE OF FLG



SECT	WD	A	B	C	BEVL	BEVR	1	2	D
BA	11	9	7 1/16	7	9 3/8	9 5/16	x2bs	x2cs	7/8 x 3
BC	8	6	3	4 5/16	5 15/16	8 5/8	x2a	x2ag	7/8 x 2 3/4
BD	8	6	4 3/8	5 1/8	8 11/16	10 3/16	x2g	x2aw	7/8 x 2 3/4
BE	8	6	5 1/8	3 1/4	10 3/16	6 7/16	x2w	x2ac	7/8 x 2 3/4



ONE - GIRDER - G4C (DEV)

1. FOR GIRDER STANDARD DETAILS SEE DWG. X1 & X2.
2. FOR CAMBER DIAGRAM SEE DWG. C3.
3. FOR FLANGE DIAGRAM SEE DWG. F3 & F4.
4. FOR GENERAL NOTES SEE SHT. GNI.

RECEIVED  
 OK'D BY: *DR* OK'D BY: *As Noted*  
 AUG 26 2002  
 RESUBMIT APPROVED BY: *RRW* DATE: 9-17-02

OUT FOR APPROVAL	8-23-02										
OUT FOR APPROVAL											
ISSUED TO SHOP											
FIELD & OFFICE											
REV.	REMARKS	DATE	DWN	CHK	APP	Q.A.	NO.	DIA.	LGT	TYPE	WASHER
	MATERIAL:										
	ELECTRODES:										
	HOLES:										
	SHOP BOLTS:										
	M270-50W										AS NOTED
	SURFACE PREP. & PAINT: -STEEL WITHIN 10'-0" ENDS OF GIRDERS SHALL BE PAINTED (SEE GNI) -ALL OTHER STEEL SHALL BE BLAST CLEANED AND LEFT UNPAINTED.										
	DESCRIPTION:	GIRDER - G4C							DRAWN BY	DATE	
	JOB:	VT RTE 9 OVER THE DEERFIELD RIVER							ATD	08/18	
		BRIDGE NO. 25							CHKD BY		
		SEARSBURG, VERMONT							DO	08/20	
		CONTRACTOR: J.A. McDONALD							APPROV BY		
									SUPERVISOR	H. J. GATTI	
	PROJ NO.	PROJ. NHF 010-1(18)							Q.A.		
	CUSTOMER:	VERMONT AGENCY OF TRANSPORTATION									
	<b>CASCO BAY STEEL STRUCTURES, INC.</b>								JOB NO.	DRG. NO.	
	75 SPRING HILL ROAD								165	14	
	PHONE (207) 282-7360								SACO, MAINE 04072		
									FAX. (207) 282-1179	REV.	

627-BR 25-5519