

GENERAL NOTES

CONSTRUCTION SPECIFICATIONS

- 1). ALL MATERIAL AND WORKMANSHIP TO BE IN ACCORDANCE WITH THE STATE OF VERMONT AGENCY OF TRANSPORTATION STANDARD SPECIFICATIONS FOR CONSTRUCTION DATED 1990 WITH LATEST REVISIONS AND THE SPECIAL PROVISIONS.

DESIGN SPECIFICATIONS

- 1). AMERICAN ASSOCIATION OF STATE HIGHWAY AND TRANSPORTATION OFFICIALS (A.A.S.H.T.O) STANDARD SPECIFICATIONS FOR HIGHWAY BRIDGES, 1996 EDITION WITH LATEST REVISIONS.

MATERIAL SPECIFICATIONS

- 1). UNLESS NOTED, ALL STEEL TO BE AASHTO M270 GRADE 50W (ASTM A709-50W).
- 2). HIGH STRENGTH BOLTS: AASHTO M164 (ASTM A325) 7/8" DIA. TYPE 3 BOLTS SHALL BE USED FOR UNPAINTED CONNECTIONS. TYPE 1 (GALV.) BOLTS SHALL BE USED FOR PAINTED CONNECTIONS.
- 3). ALL GIRDER WEB & FLANGES, CROSSFRAMES AND CONNECTION PLATES SHALL BE CHARPY V NOTCH TESTED IN ACCORDANCE WITH THE REQUIREMENTS OF VERMONT STANDARD SPECIFICATIONS. DRAWINGS SHALL CALL OUT "H2-3" FOR EACH APPLICABLE ITEM IN THE BILLS OF MATERIAL.

FABRICATION

- 1). ALL HOLES SHALL BE PUNCHED OR DRILLED FULL SIZE (UN). HOLES NOTED "DA" SHALL BE DRILLED DURING ASSEMBLY WITH PARTS ASSEMBLED.
- 2). STUDS ARE FURNISHED AND FIELD APPLIED BY OTHERS.

WELDING

- 1). THE CONFIGURATION OF THE WELD JOINTS AND ALL WELDING PROCEDURES SHALL BE IN ACCORDANCE WITH AASHTO/AWS D1.5-02 BRIDGE WELDING CODE AND IN ADDITION TO SPECIFICATIONS SHOWN ABOVE. ALL WELDING WILL BE DETAILED TO PRE-QUALIFIED JOINTS, UNLESS PROHIBITED BY THE DESIGNER.
- 2). WELDING OF MAIN LOAD CARRYING MEMBERS AND ATTACHMENTS SHALL BE PERFORMED USING THE AUTOMATIC SUBMERGED ARC & SHIELDED METAL ARC PROCESSES. ALL WELDS ARE CONTINUOUS U.N.
- 3). NON DESTRUCTIVE TESTING OF WELDS SHALL BE IN ACCORDANCE WITH THE REFERENCED SPECIFICATION.

CLEANING:

- 1). ALL STEEL SHALL BE BLAST CLEANED AS PER SSPC SP-10 PER SPEC. 506.14(a)
- 2). 1/16" RADIUS ON ALL EDGES OF PAINTED SURFACES.

PAINTING

- 1). ALL STEEL COMPONENTS WITHIN 10'-0 OF END OF GIRDERS AS SHOWN IN SKETCH "P1" SHALL BE COATED WITH THE PROTECTIVE SYSTEM ACCORDING TO SECTION 513 OF THE SPECIFICATION. THE PAINT COLOR SHALL BE BROWN. PAINT SYSTEM MUST BE SYSTEM LISTED ON THE QUALIFIED PRODUCT LIST SECTION 513.02 BROWN COLOR CHIP #20059.

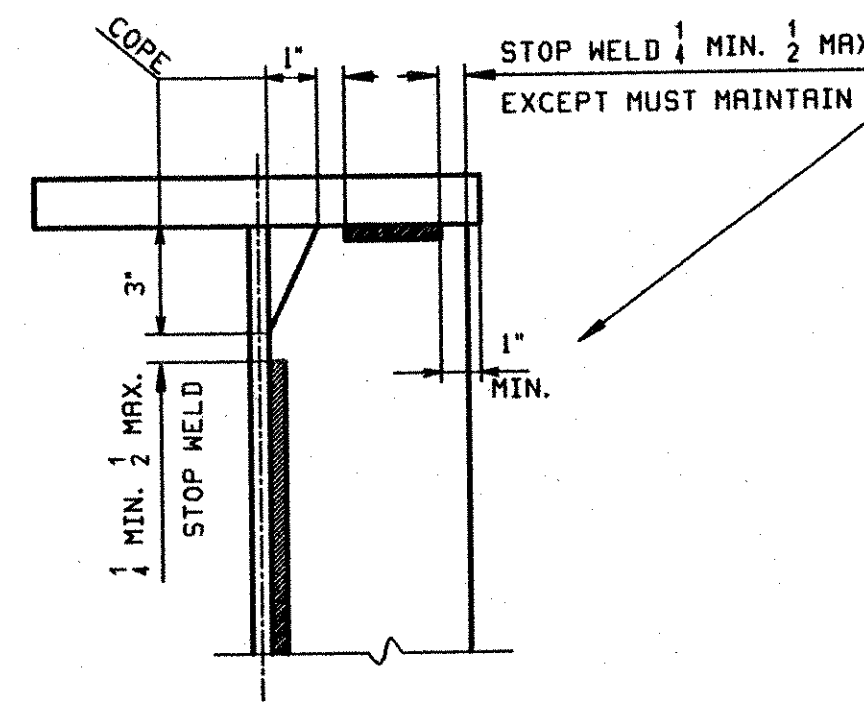
FIELD CONNECTIONS

- 1). ALL FIELD CONNECTIONS SHALL BE MADE WITH 7/8" (22mm) DIAMETER HIGH STRENGTH A-325 BOLTS, INSTALLED PER SECTION 506.19(c).
- 2). BOLTS SHALL HAVE HEAVY HEX NUT, HEX HEAD, & ONE FLAT WASHER EACH (WASHER TO BE PLACED UNDER TURNED ELEMENT).
- 3). PIECE MARKS WILL BE LOCATED AS SHOWN ON ERECTION DRAWINGS.

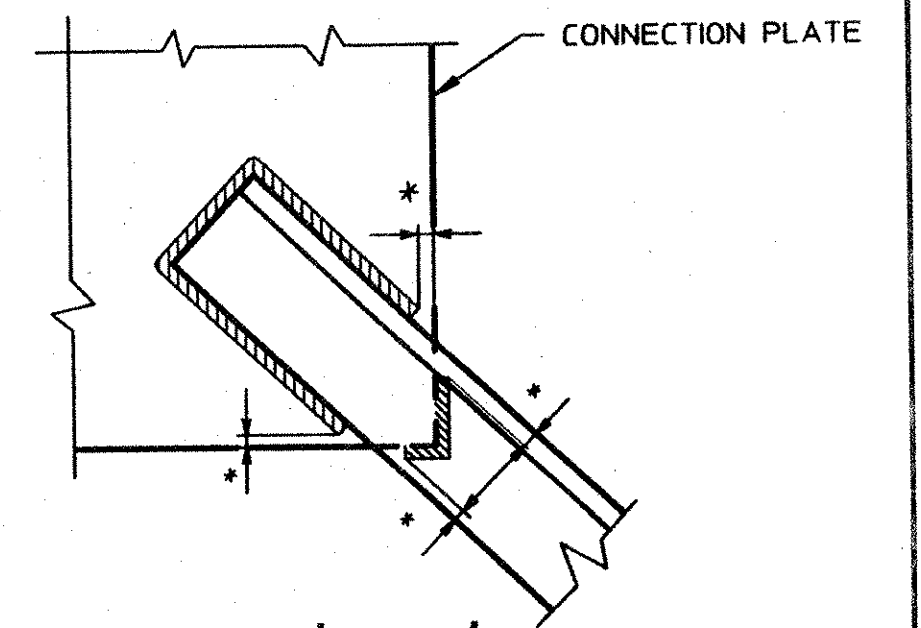
oversized holes shall have hardened washers under both bolt head and nut

PAINT SYSTEM

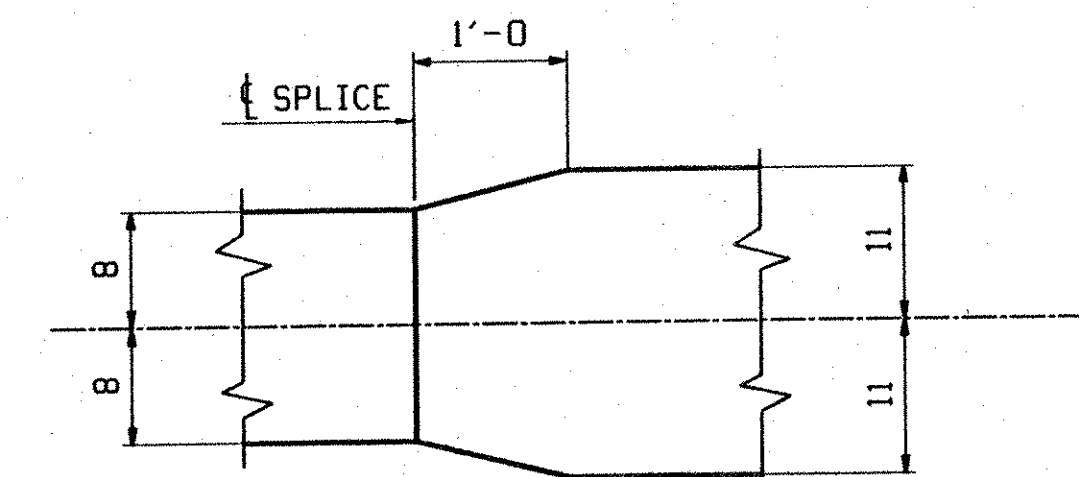
	WASSER	(moisture cure system)		
HIGH TECH	P	MC-Zinc zinc rich urethane (organic)	3.0	6.0
COATINGS	I	MC-Ferrox B urethane	3.0	6.0
	T	MC-Ferrox A aliphatic urethane	3.0	10.0



DETAIL "WS1"



*** NO WELD 1/4 MIN. 1/2 MAX.
TYP. WELD TERMINATION**



WIDTH TRANSITION DETAIL "WT"

RECEIVED
 OK'D BY DV OK'D BY
 AUG 26 2002
 RESUBMIT APPROVED As Noted
 BY RRW DATE 9-17-02

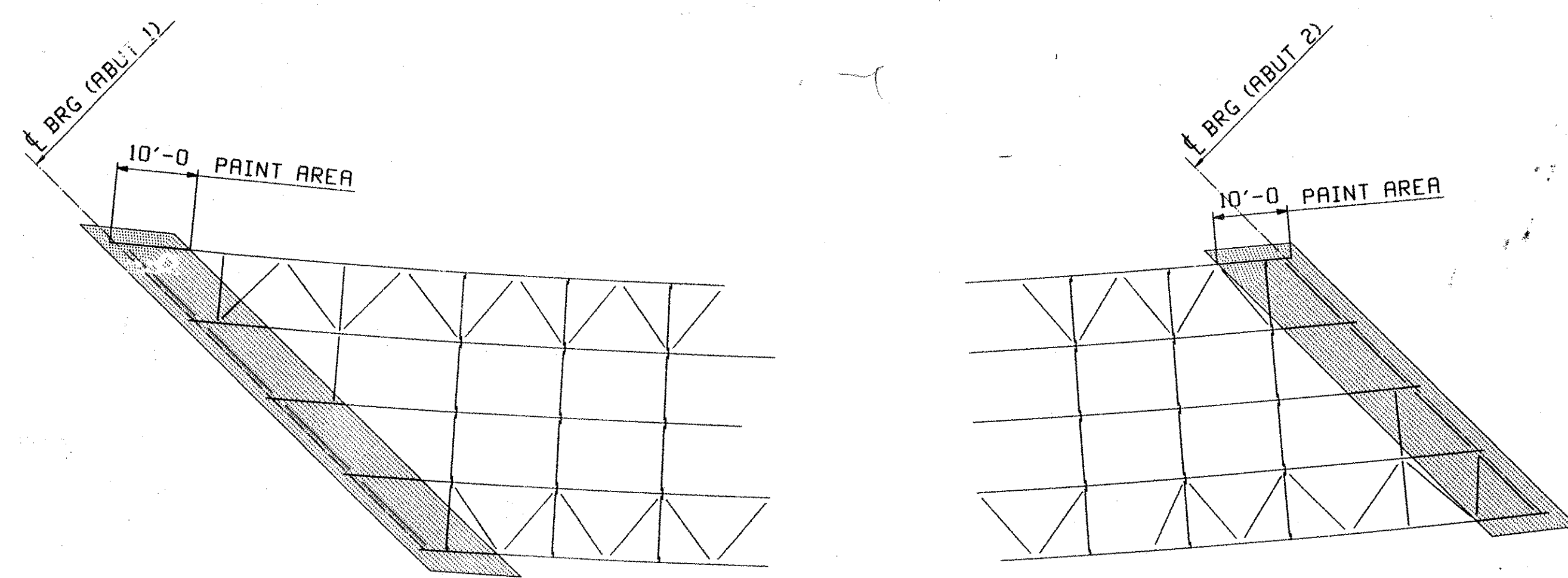
NOTE TO ENGINEER:
 THESE NOTES ARE NOT INTENDED TO BE ALL INCLUSIVE AND COMPLIANCE WITH RELEVANT SPECIFICATIONS REMAIN UNCHANGED.

OUT FOR APPROVAL	5-22-02																		
OUT FOR APPROVAL																			
ISSUED TO SHOP																			
FIELD & OFFICE																			

REV.	REMARKS	DATE	DWN	CHK	APP	Q.A.	NO.	DIA.	LGT	TYPE	WASHER
	MATERIAL:										SHOP BOLTS:

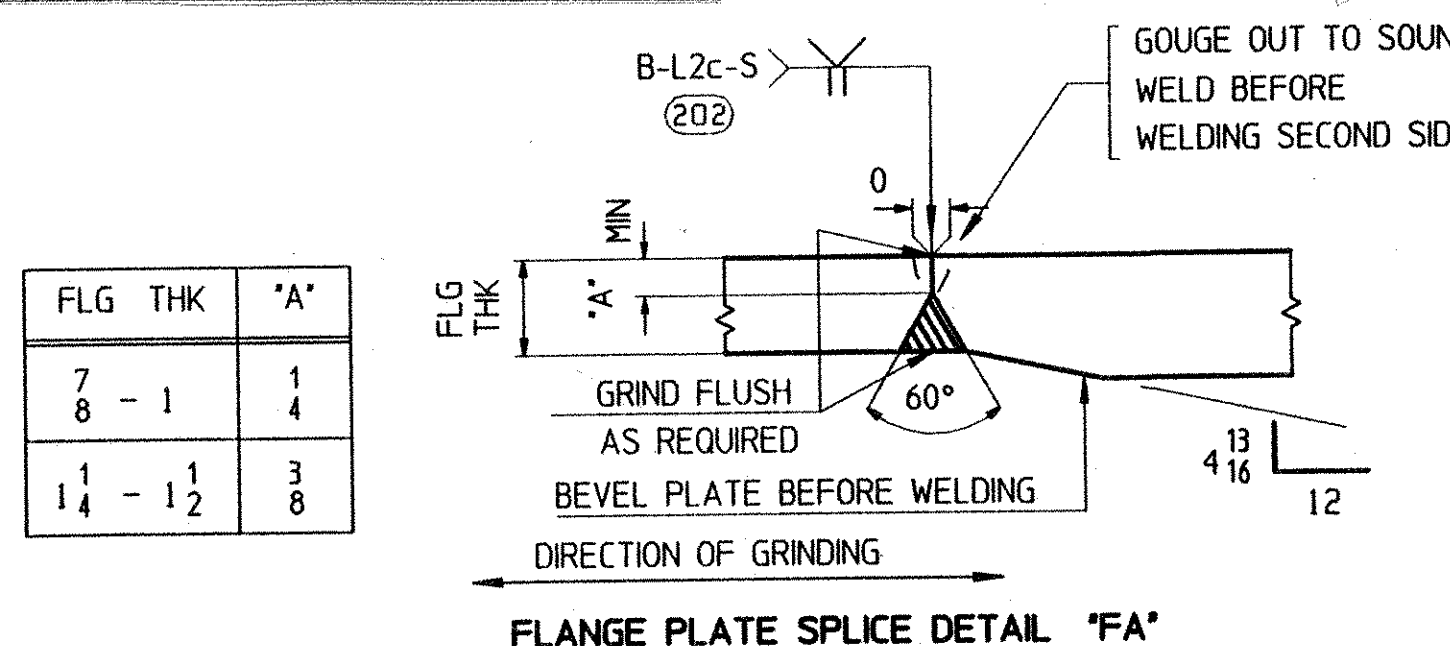
SURFACE PREP. & PAINT:

DESCRIPTION:	GENERAL NOTES	DRAWN BY	DATE
JOB: VT RTE 9 OVER THE DEERFIELD RIVER		WL	07/15
BRIDGE NO. 25		CHKD BY	
SEARSBURG, VERMONT		JAK	7/17
CONTRACTOR: J.A. McDONALD		APPROV BY	
PROJ NO. PROJ. NHF 010-1(18)		SUPERVISOR	W. J. GATTI
CUSTOMER: VERMONT DOT		Q.A.	
CASCO BAY STEEL STRUCTURES, INC.		JOB NO.	DRG. NO.
75 SPRING HILL ROAD		165	GN1
PHONE (207) 282-7360			REV. <input type="checkbox"/>
		SACO, MAINE 04072	
		FAX. (207) 282-1179	



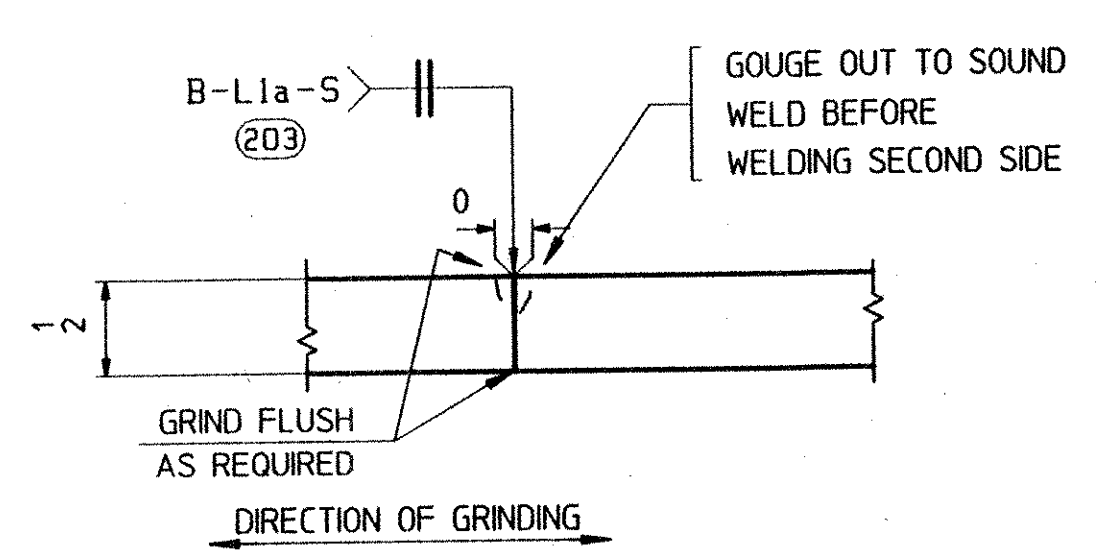
PAINT SKETCH "P1"

NOTES:
 -ALL STEEL WITHIN 10'-0 OF THE END OF GIRDER SHALL BE PAINTED.
 -FOR LATERAL BRACING AND INT CROSSFRAMES THAT FALL PARTIALLY IN PAINTED AREA, PAINT THE ENTIRE PIECE.



FLANGE PLATE SPLICE DETAIL "FA"

FLG THK	'A'
7/8 - 1	1/4
1 1/4 - 1 1/2	3/8



WEB PLATE SPLICE DETAIL "WA"