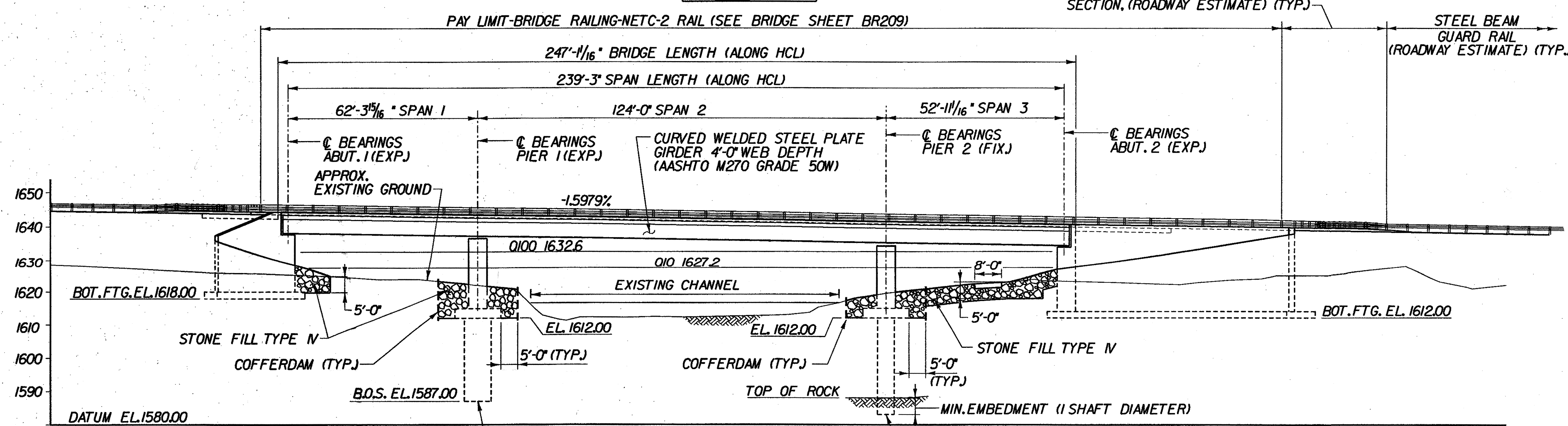
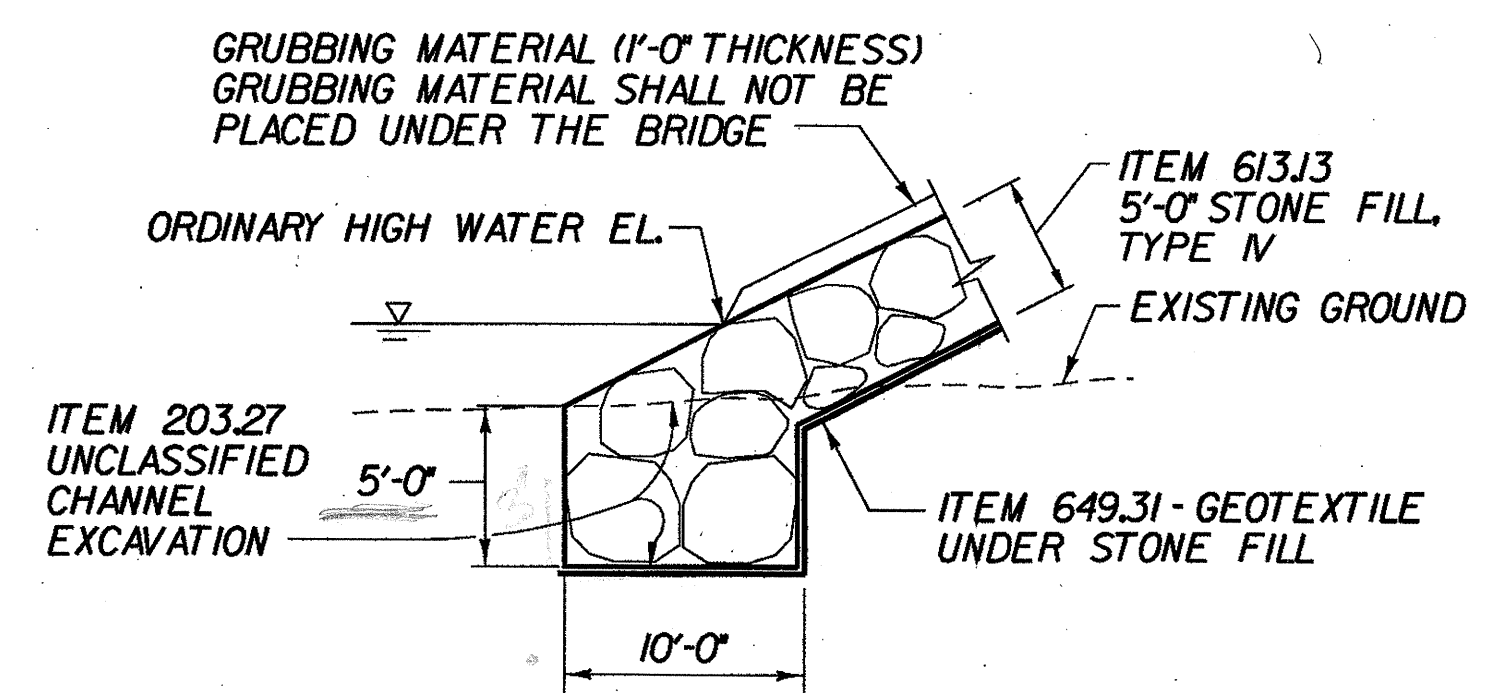
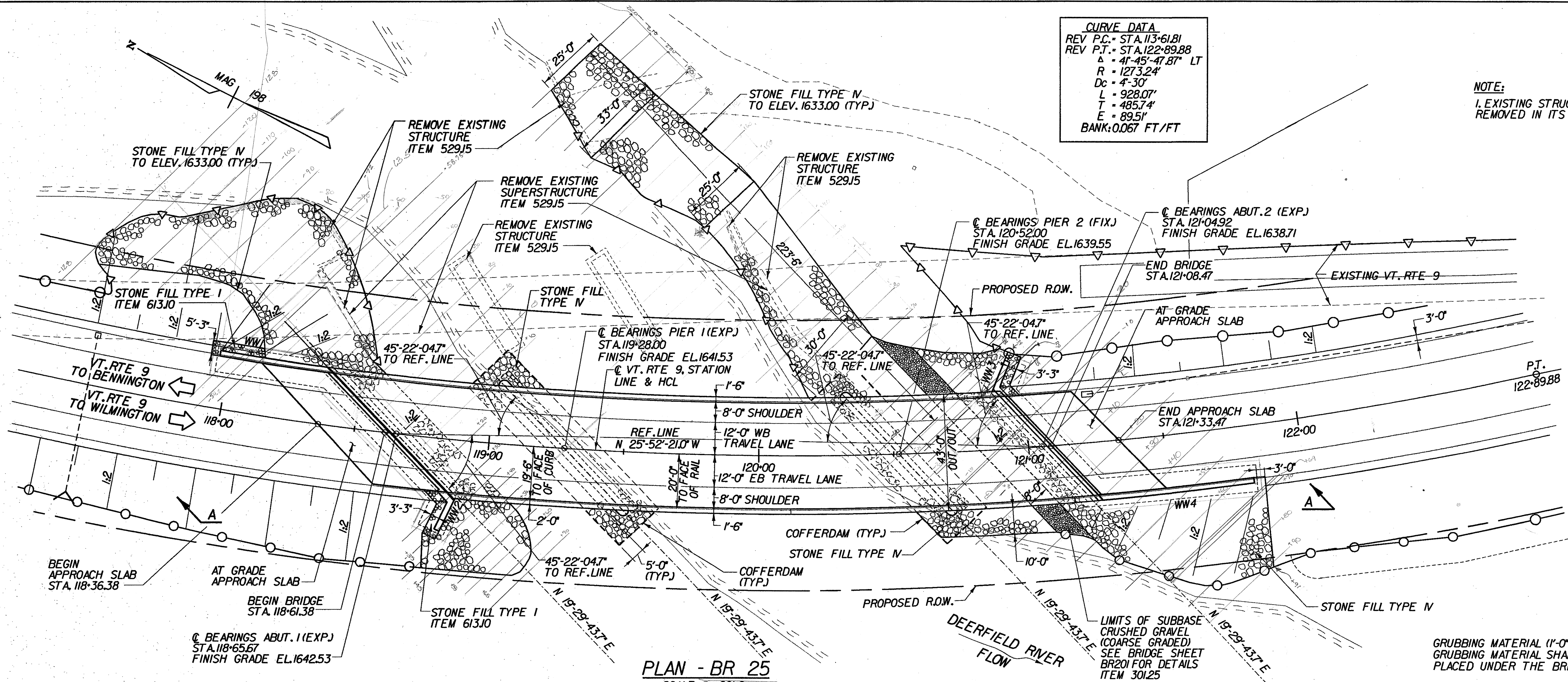


CURVE DATA
 REV P.C. - STA. 113+61.81
 REV P.T. - STA. 122+89.88
 Δ - 41°-45'-47.87" LT
 R - 1273.24'
 Dc - 4'-30"
 L - 928.07'
 T - 485.74'
 E - 89.51'
 BANK: 0.067 FT/FT

NOTE:
 1. EXISTING STRUCTURE TO BE REMOVED IN ITS ENTIRETY.



**STATE OF VERMONT
 AGENCY OF TRANSPORTATION**

Town Of	SEARSBURG	Bridge No.	25
Highway No.	VT. RTE. 9	Log Sta.	
		Surv. Sta.	
VT. RTE. 9 OVER DEERFIELD RIVER			
PLAN AND ELEVATION - BR 25			
Designed By	D. VIEN	Drawn by	K. DETRICK
Checked By	M. OLSTAD	Date	2/2002
		Bridge Design Supervisor	M. OLSTAD
		Date	2/2002
PROJECT	SEARSBURG - WILMINGTON	PROJECT NO.	NHF 010-108
I.G.C. info.			
Bridge Sheet No.	BR200	Sheet #	435

CHA CLOUGH HARBOUR & ASSOCIATES LLP
 ENGINEERS, SURVEYORS, PLANNERS & LANDSCAPE ARCHITECTS
 WINNERS CIRCLE ALBANY, NEW YORK 12205

FILE NAME: S:\STATION\15\BRIDGE\25\25.plt.e.dgn
 DATE/TIME: 02/28/02
 USER: 2225