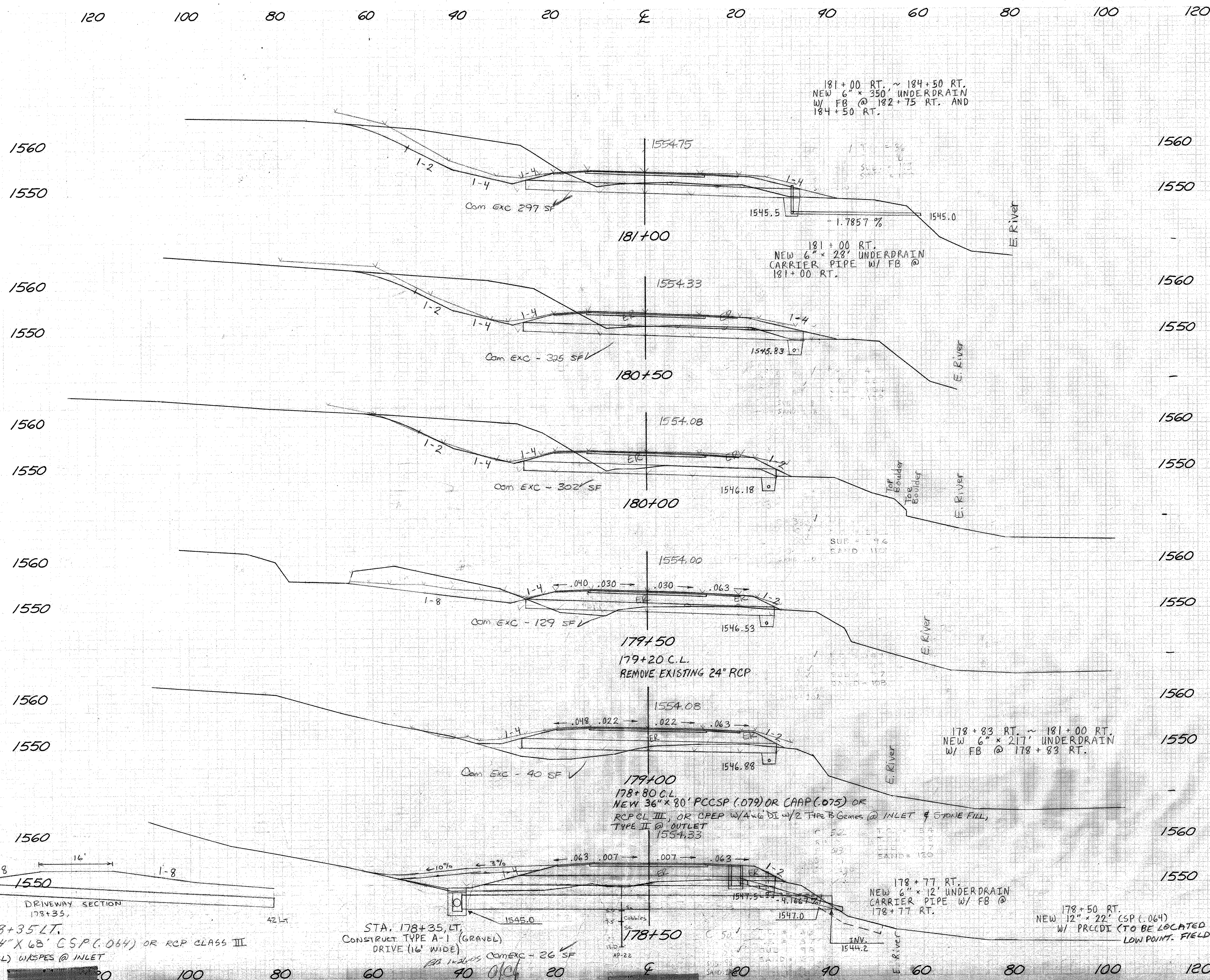


Final v. no 22, 04
Suggested MW 22, 29 Jan 04



STA. 178+35 LT.
NEW 24" X 68' CSP (.064) OR RCP CLASS III
OR CPEP (CSL) W/SPES @ INLET

STA. 178+35, LT.
CONSTRUCT TYPE A-1 (GRAVEL)
DRIVE (16' WIDE)
RA 12x105 COMEXC = 26 SF
1/7/05

178+80 C.L.
NEW 36" X 80' PCCSP (.079) OR CAAP (.075) OR
RCP CL III, OR CPEP W/A-6 DI W/2 TYPE B GENIES @ INLET & STONE FILL,
TYPE II @ OUTLET
1554.33

178+83 RT. ~ 181+00 RT.
NEW 6" X 217' UNDERDRAIN
W/ FB @ 178+83 RT.

178+77 RT.
NEW 6" X 12' UNDERDRAIN
CARRIER PIPE W/ FB @
178+77 RT.

178+50 RT.
NEW 12" X 22' CSP (.064)
W/ PRECDI (TO BE LOCATED AT
LOW POINT. FIELD VERIFY)

181+00 RT. ~ 184+50 RT.
NEW 6" X 350' UNDERDRAIN
W/ FB @ 182+75 RT. AND
184+50 RT.

181+00 RT.
NEW 6" X 28' UNDERDRAIN
CARRIER PIPE W/ FB @
181+00 RT.