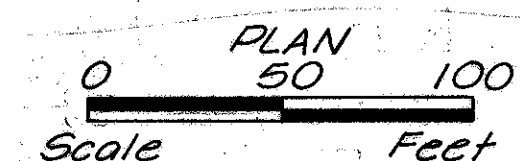
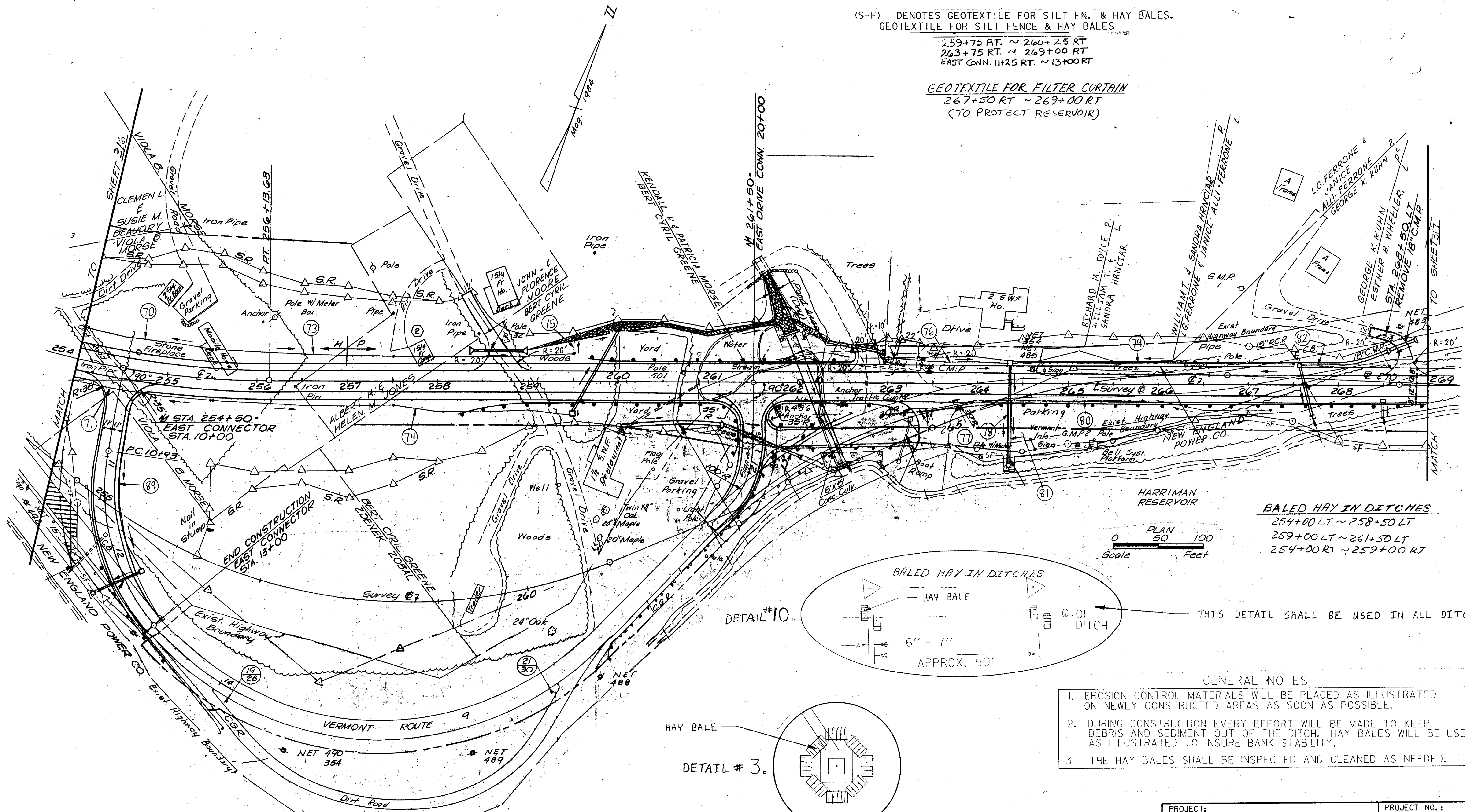


# THIS SHEET IS FOR EROSION CONTROL USE ONLY

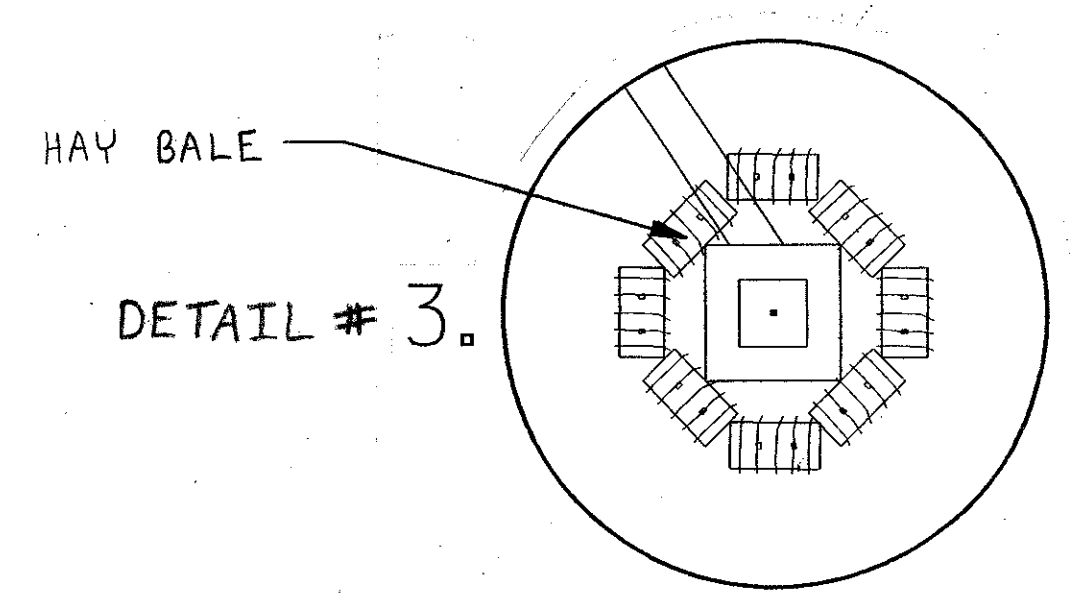
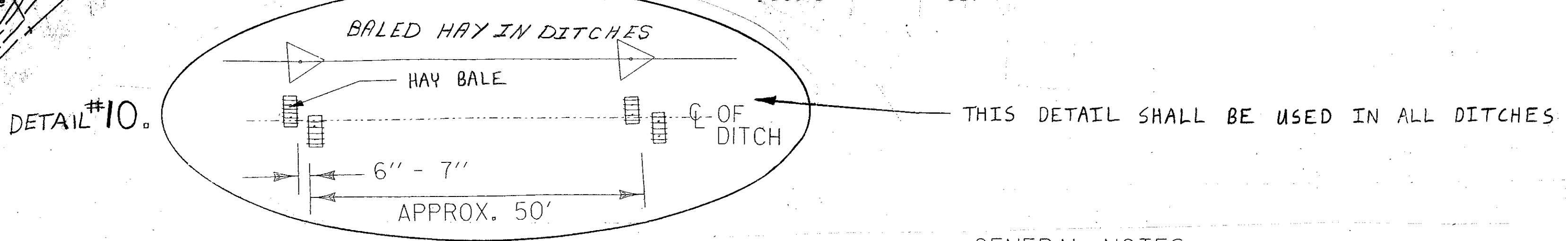
(S-F) DENOTES GEOTEXTILE FOR SILT FN. & HAY BALES.  
 GEOTEXTILE FOR SILT FENCE & HAY BALES

259+75 RT. ~ 260+25 RT  
 263+75 RT. ~ 269+00 RT  
 EAST CONN. 11+25 RT. ~ 13+00 RT

GEOTEXTILE FOR FILTER CURTAIN  
 267+50 RT ~ 269+00 RT  
 (TO PROTECT RESERVOIR)



**BALED HAY IN DITCHES**  
 254+00 LT ~ 258+50 LT  
 259+00 LT ~ 261+50 LT  
 254+00 RT ~ 259+00 RT



- GENERAL NOTES**
1. EROSION CONTROL MATERIALS WILL BE PLACED AS ILLUSTRATED ON NEWLY CONSTRUCTED AREAS AS SOON AS POSSIBLE.
  2. DURING CONSTRUCTION EVERY EFFORT WILL BE MADE TO KEEP DEBRIS AND SEDIMENT OUT OF THE DITCH. HAY BALES WILL BE USED AS ILLUSTRATED TO INSURE BANK STABILITY.
  3. THE HAY BALES SHALL BE INSPECTED AND CLEANED AS NEEDED.

PROJECT: SEARSBURG - WILMINGTON	PROJECT NO.: NH F 010-11(18)
SQUAD LEADER: DELLA SANTA	DRAWN BY: SQUAD B
LAYOUT #13	SHEET: 316 OF 435