

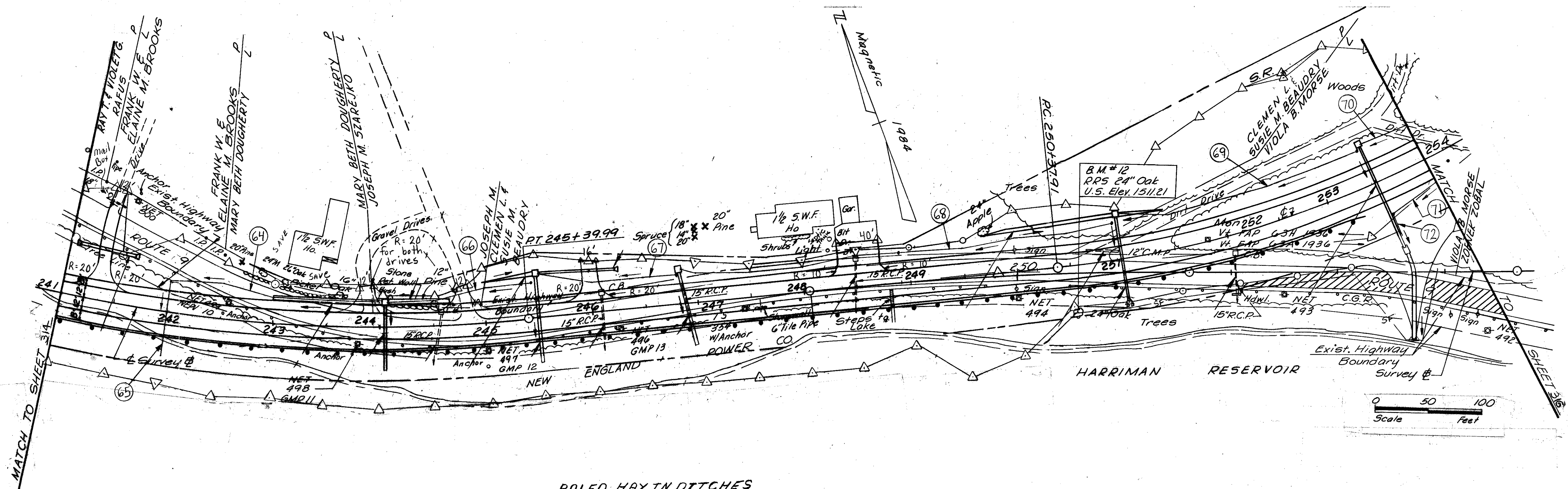
# THIS SHEET IS FOR EROSION CONTROL USE ONLY

(S-F) DENOTES GEOTEXTILE FOR SILT FN. & HAY BALES.  
 GEOTEXTILE FOR SILT FENCE & HAY BALES

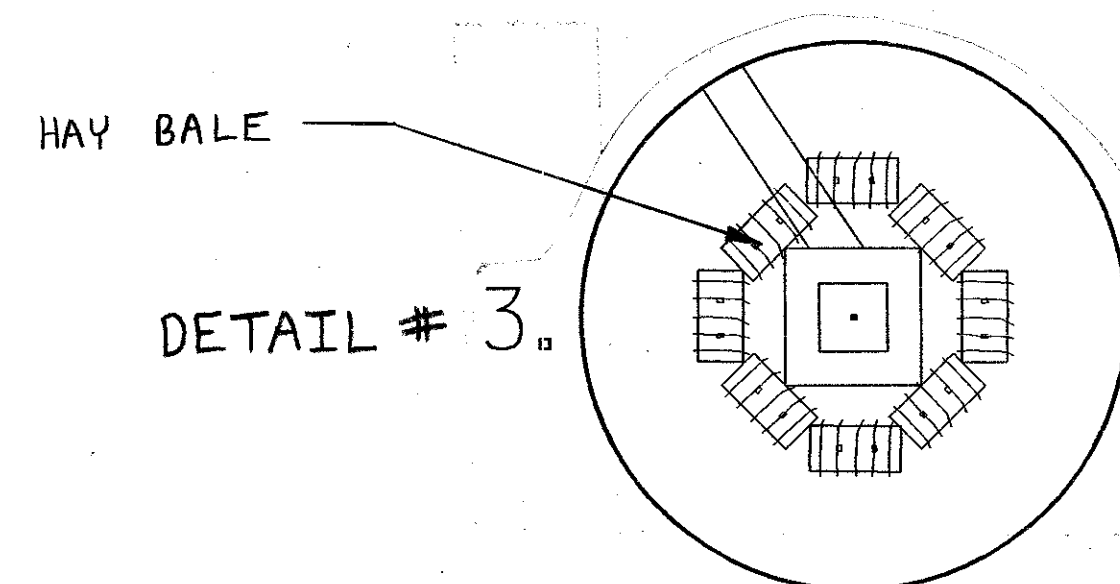
250+20 RT. ~ 253+75 RT

GEOTEXTILE FOR FILTER CURTAIN

241+00 RT ~ 250+00 RT  
 (TO PROTECT RESERVOIR)



BALED HAY IN DITCHES  
 245+00 LT ~ 247+00 LT  
 250+00 LT ~ 254+00 LT

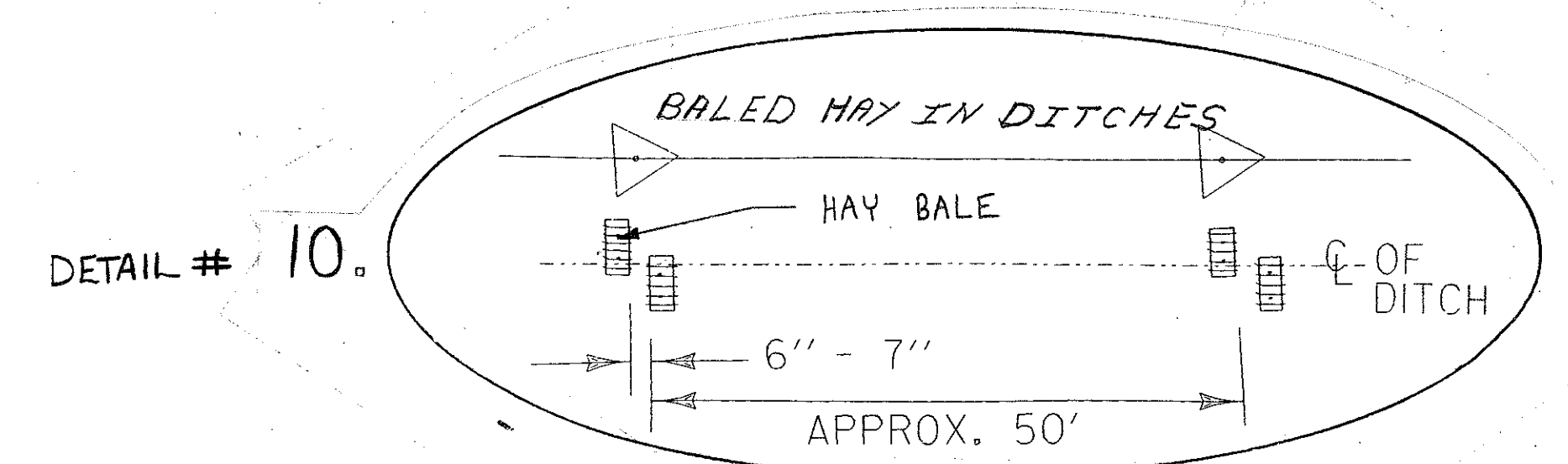


DETAIL # 3.

THIS DETAIL SHALL BE USED  
 AT ALL DROP INLET LOCATIONS

### GENERAL NOTES

1. EROSION CONTROL MATERIALS WILL BE PLACED AS ILLUSTRATED ON NEWLY CONSTRUCTED AREAS AS SOON AS POSSIBLE.
2. DURING CONSTRUCTION EVERY EFFORT WILL BE MADE TO KEEP DEBRIS AND SEDIMENT OUT OF THE DITCH. HAY BALES WILL BE USED AS ILLUSTRATED TO INSURE BANK STABILITY.
3. THE HAY BALES SHALL BE INSPECTED AND CLEANED AS NEEDED.



DETAIL # 10.

THIS DETAIL SHALL BE USED IN ALL DITCHES

PROJECT: SEARSBURG - WILMINGTON	PROJECT NO.: NH F 010-118
SQUAD LEADER: DELLA SANTA	DRAWN BY: SQUAD B

LAYOUT # 12

SHEET: 315 OF 435