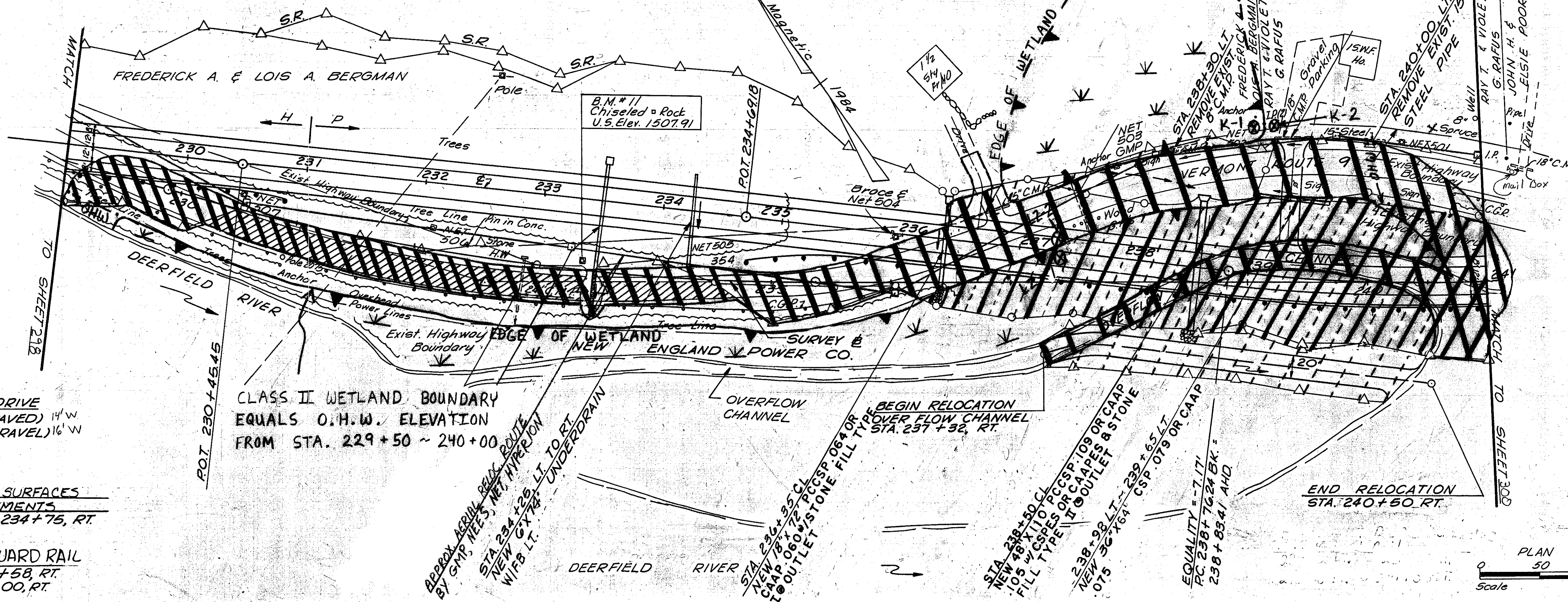


THIS SHEET IS FOR WETLANDS AND RARE AND ENDANGERED SPECIES ONLY

CURVE DATA 13
 $\Delta = 26^{\circ}15'47.4"$ LT.
 $D = 4^{\circ}00'00"$
 $R = 1432.40'$
 $T = 334.16'$
 $L = 656.58'$
 $E = 38.46'$
 $Bank = 0.063/1$

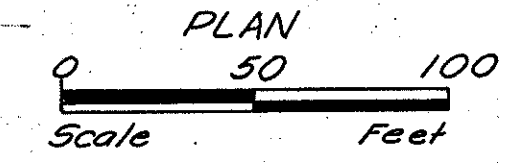


PLAN
 DATE: _____ BY: _____
 CHECKED: _____
 NOTE BOOK NO. _____
 ALIGNMENT CHECKED: _____
 ELEV. OF WAY CHECKED: _____

CONSTRUCT DRIVE
 236+62, LT. (PAVED) 14' W
 239+29, LT. (GRAVEL) 16' W

EXCAVATION OF SURFACES AND PAVEMENTS
 230+15, RT TO 234+76, RT

STEEL BEAM GUARD RAIL
 229+00 - 230+58, RT
 235+00 - 241+00, RT

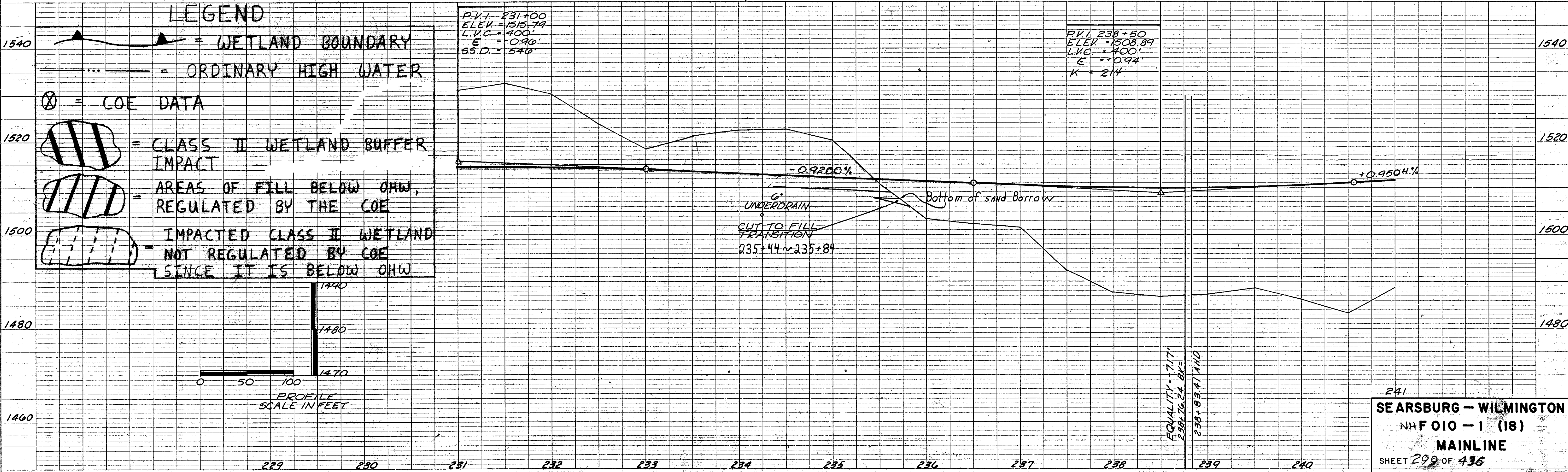


LEGEND

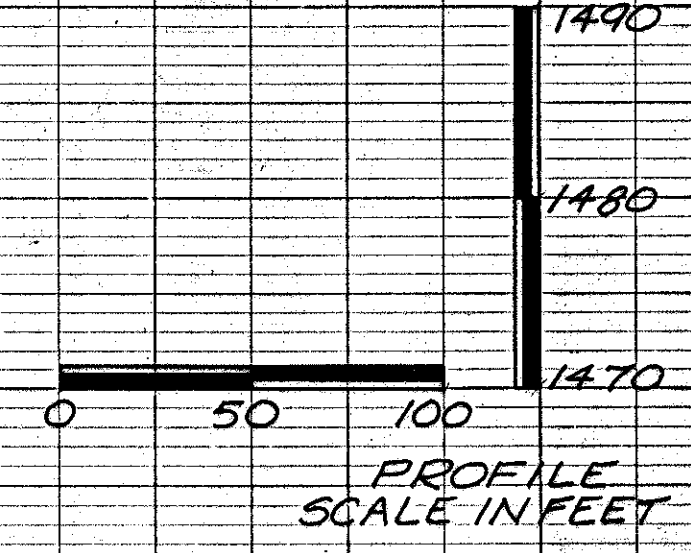
- = WETLAND BOUNDARY
- = ORDINARY HIGH WATER
- = COE DATA
- = CLASS II WETLAND BUFFER IMPACT
- = AREAS OF FILL BELOW OHW, REGULATED BY THE COE
- = IMPACTED CLASS II WETLAND NOT REGULATED BY COE SINCE IT IS BELOW OHW

P.V.I. 231+00
 ELEV. = 1515.79
 L.V.C. = 400'
 E = -0.96'
 S.S.D. = 54'

P.V.I. 238+50
 ELEV. = 1508.89
 L.V.C. = 400'
 E = +0.94'
 K = 214



PROFILE
 DATE: _____ BY: _____
 CHECKED: _____
 NOTE BOOK NO. _____
 GRADE CHECKED: _____
 ELEV. OF WAY CHECKED: _____



241
SE ARSBURG - WILMINGTON
 NH F 010 - 1 (18)
MAINLINE
 SHEET 299 OF 435