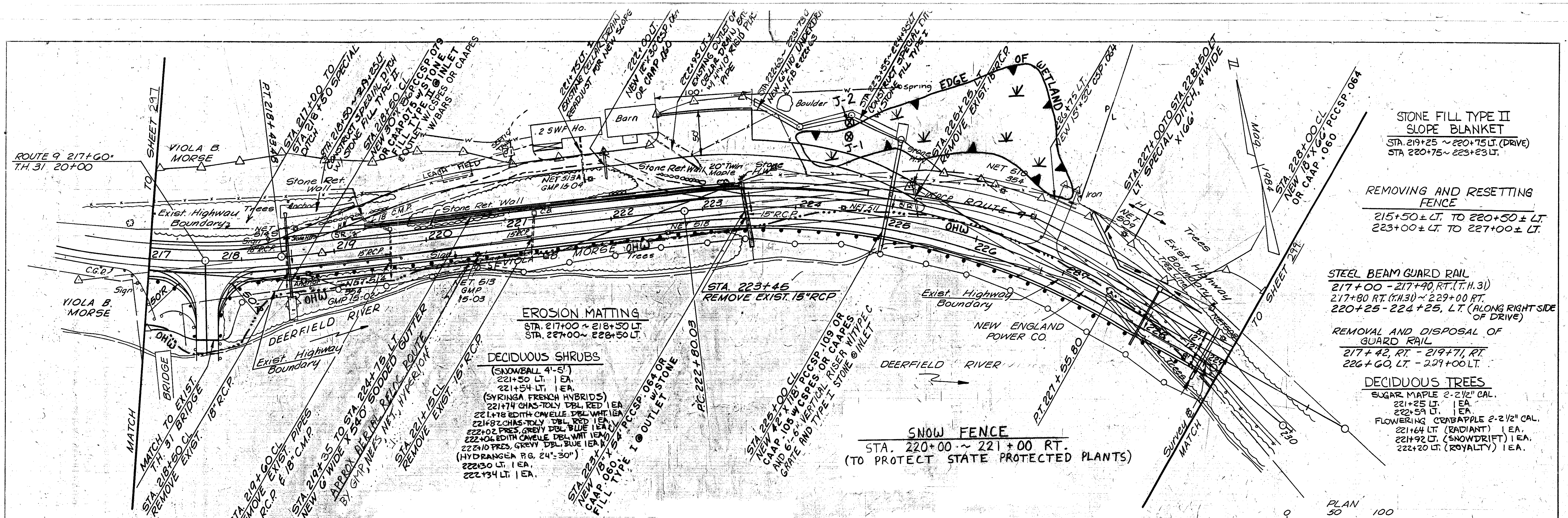
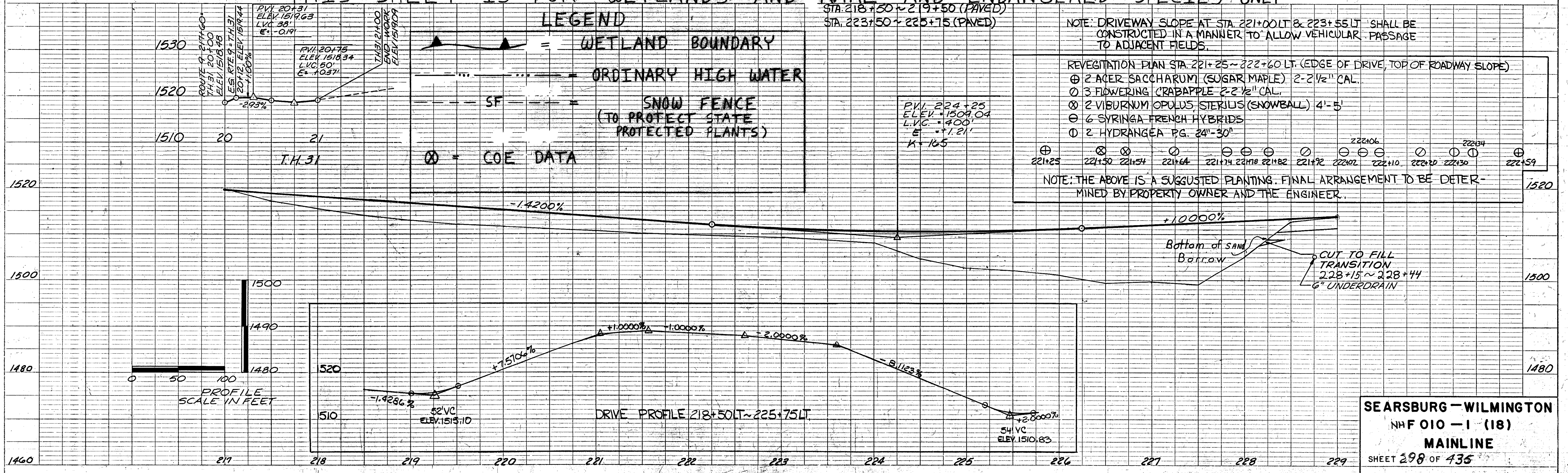


PLAN
 SHEET NO. 298
 DATE: 10/1/84
 DRAWN BY: J. J. [unreadable]
 CHECKED BY: [unreadable]
 IN CHARGE: [unreadable]



- STONE FILL TYPE II SLOPE BLANKET
 STA. 219+25 ~ 220+75 LT. (DRIVE)
 STA. 220+75 ~ 223+23 LT.
- REMOVING AND RESETTING FENCE
 215+50 ± LT. TO 220+50 ± LT.
 223+00 ± LT. TO 227+00 ± LT.
- STEEL BEAM GUARD RAIL
 217+00 - 217+40 RT. (T.H. 31)
 217+80 RT. (T.H. 31) ~ 229+00 RT.
 220+25 - 224+25, LT. (ALONG RIGHT SIDE OF DRIVE)
- REMOVAL AND DISPOSAL OF GUARD RAIL
 217+42, RT. - 219+71, RT.
 226+60, LT. - 229+00 LT.
- DECIDUOUS TREES
 SUGAR MAPLE 2-2 1/2" CAL.
 221+25 LT. 1 EA.
 222+59 LT. 1 EA.
 FLOWERING CRABAPPLE 2-2 1/2" CAL.
 221+64 LT. (RADIANT) 1 EA.
 221+92 LT. (SNOWDRIFT) 1 EA.
 222+20 LT. (ROYALTY) 1 EA.

THIS SHEET IS FOR WETLANDS AND RARE AND ENDANGERED SPECIES ONLY



SEARSBURG - WILMINGTON
 NH F 010 - 1 (18)
 MAINLINE
 SHEET 298 OF 435