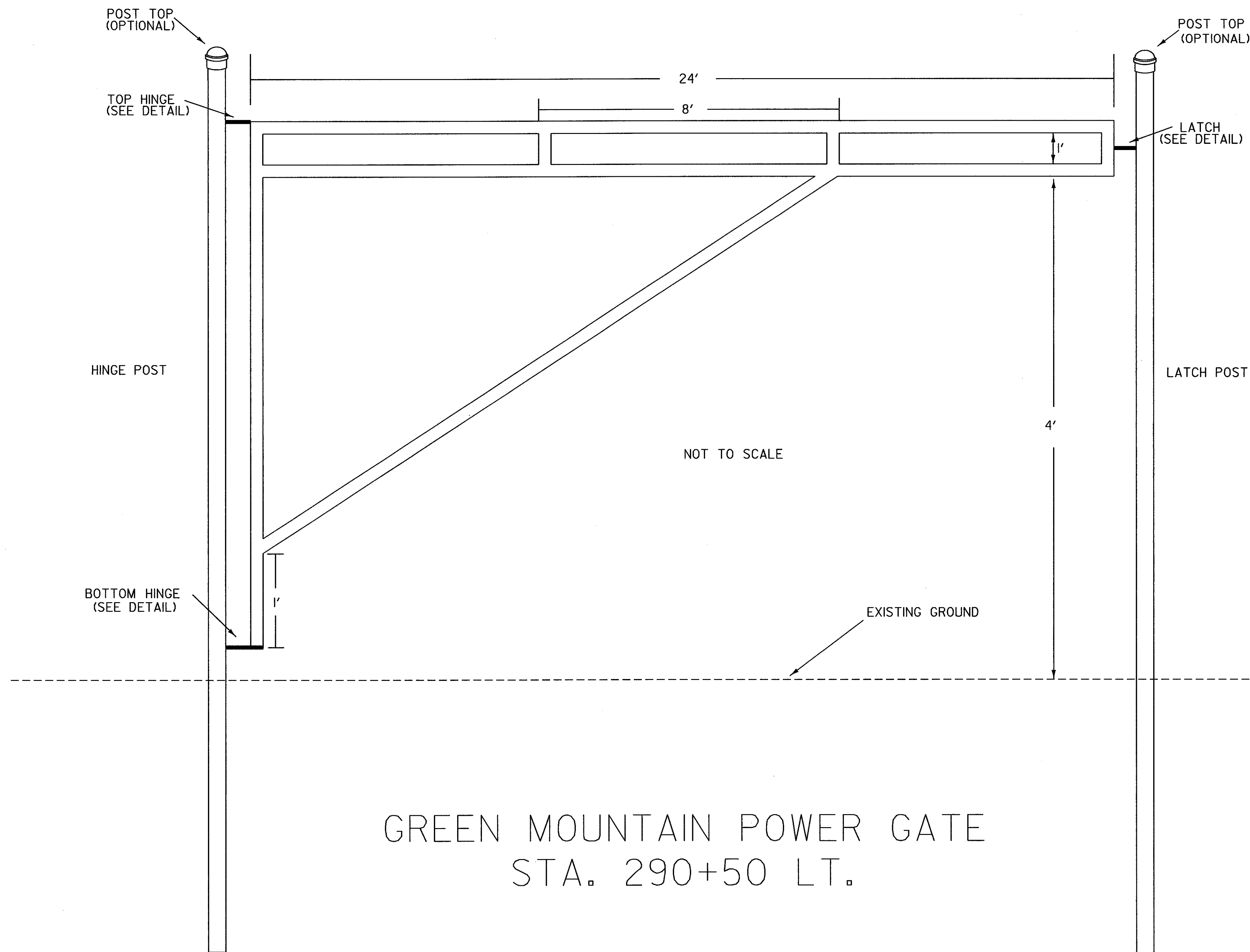


GENERAL NOTES (ALUMINUM ALLOY)

GATE FRAMES TO BE 1.900" DIAMETER NOMINAL PIPE, SCHEDULE 40, ASSEMBLED BY WELDING, OR BOLTING, AND SHALL BE FURNISHED COMPLETE WITH HARDWARE
 GATE POSTS SHALL BE 2.875" DIAMETER NOMINAL PIPE, SCHEDULE 40
 POST FOOTINGS: ALL POSTS SHALL BE SET TO DEPTH OF TWO (2) FEET 10 INCHES IN A 10" CYLINDRICAL SHAPED HOLE 3'-6" DEEP FILLED WITH CONCRETE

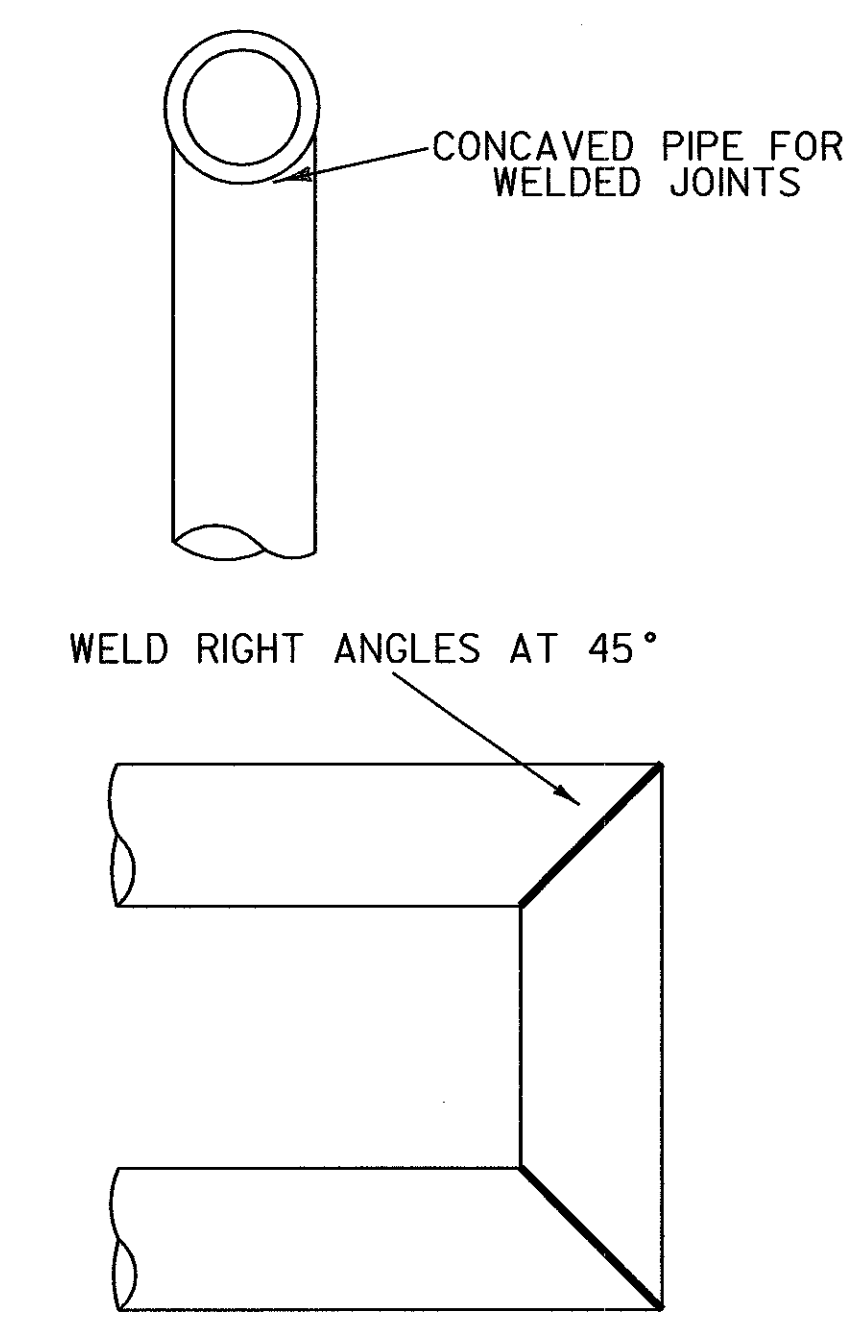


GREEN MOUNTAIN POWER GATE
 STA. 290+50 LT.

SEE POST FOOTING DETAIL

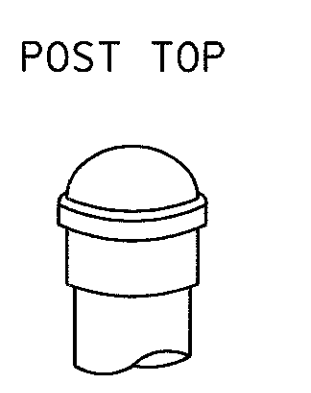
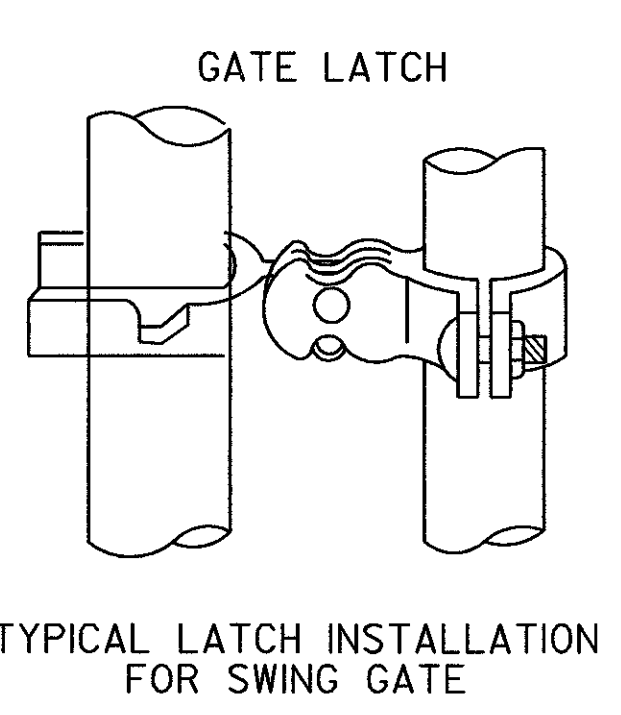
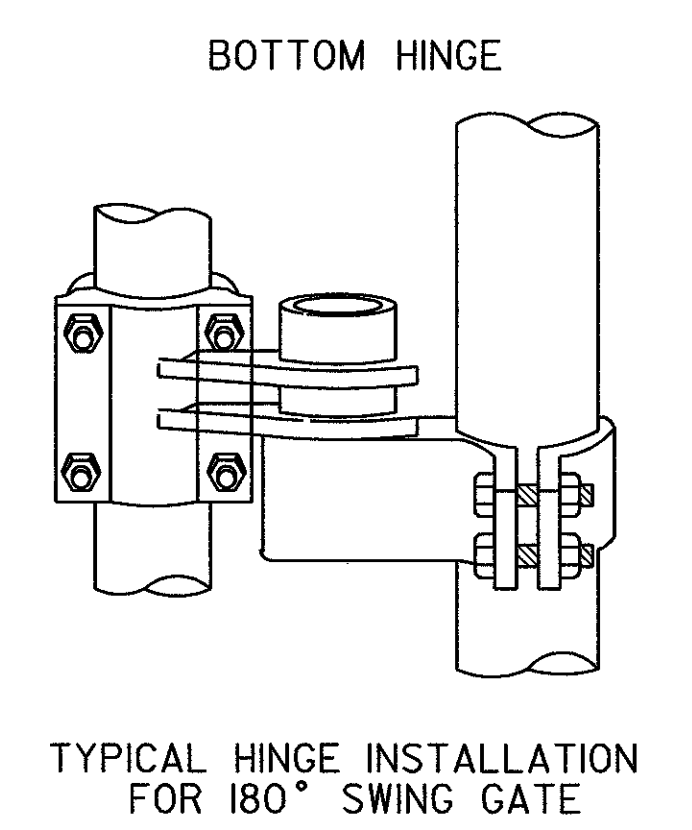
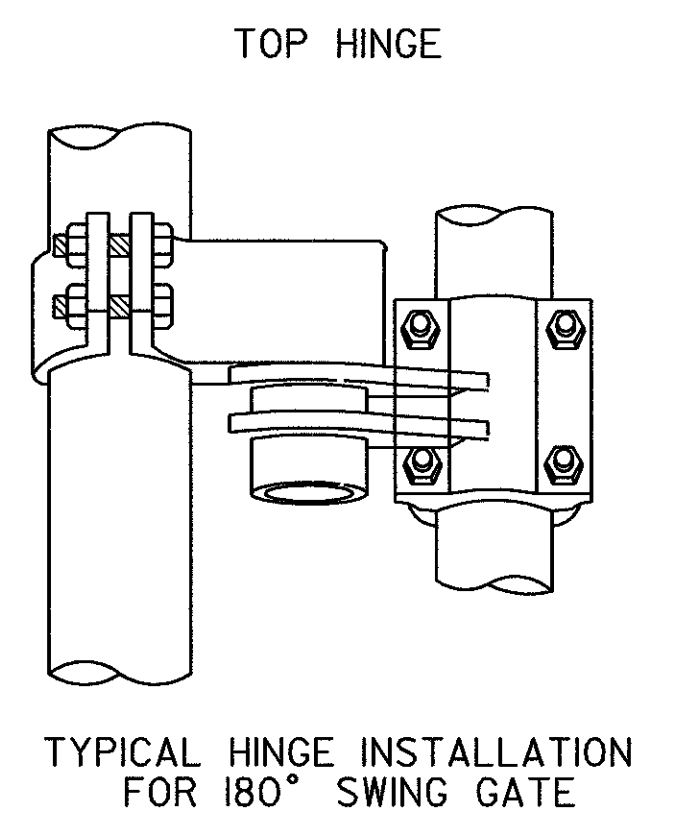
NOT TO SCALE

WELDING DETAIL

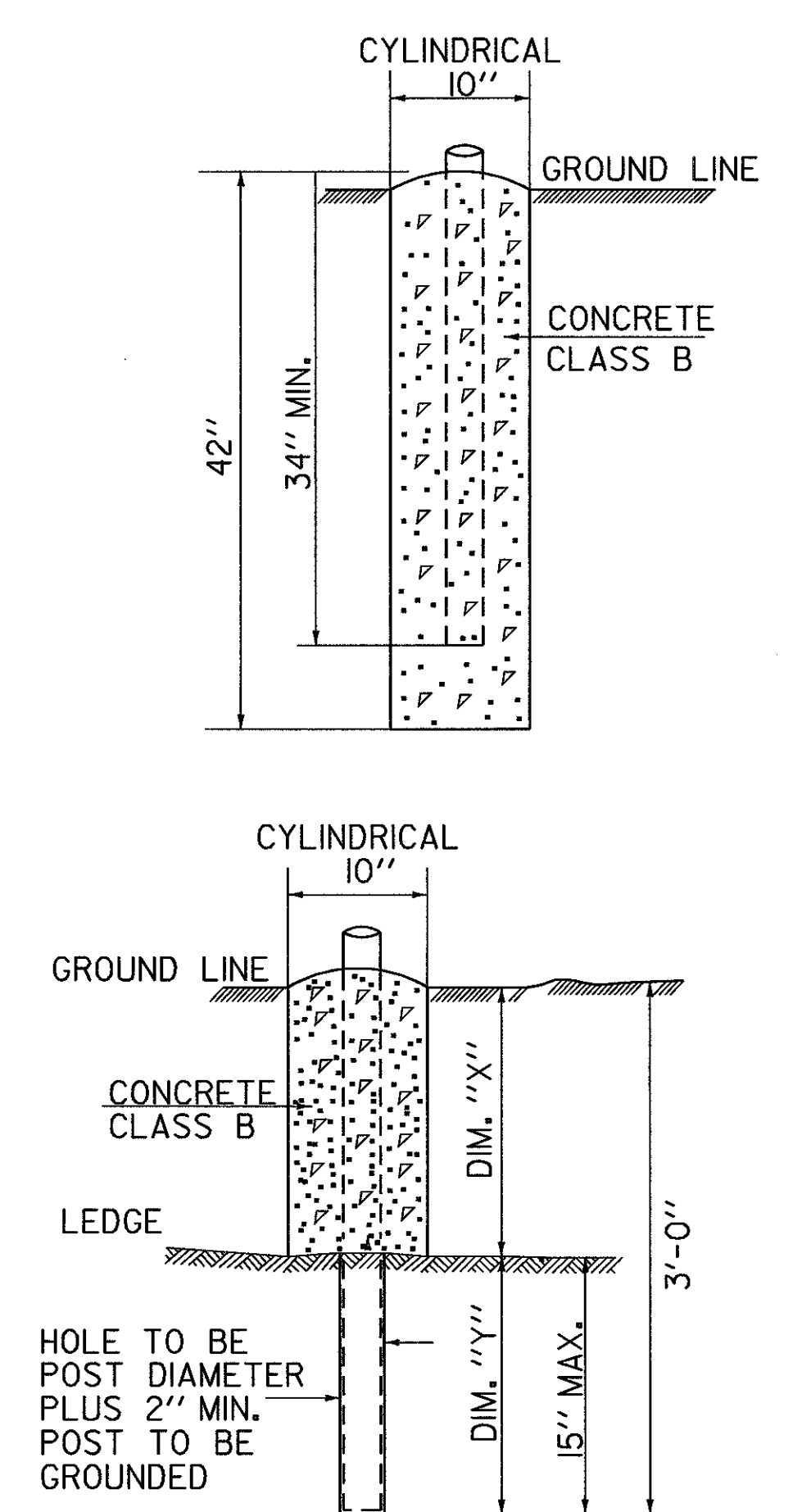


HARDWARE DETAIL

SPOT WELD ALL NUTS TO BOLTS (TO PREVENT VANDELISM)



POST FOOTING DETAIL



DIM. "Y" = 15" WHEN DIM. "X" VARIES BETWEEN 0" AND 24", WHEN DIM "X" EXCEEDS 24", DIM. "Y" DECREASES ACCORDINGLY

SURVEYED BY	DATE
DRAWN BY	DATE 3/92
SQUAD LEADER	DELLA SANTA
DESIGN FILE NO.	/SQDB/78D096/DD096.DGN
PRF FILE	DD096GTE
DATE PLOTTED	13-NOV-2001
PROJ. NAME	SEARSBURG-WILMINGTON
PROJ. NO.	F 010-(118)
SHEET	288 OF 435 SHEETS