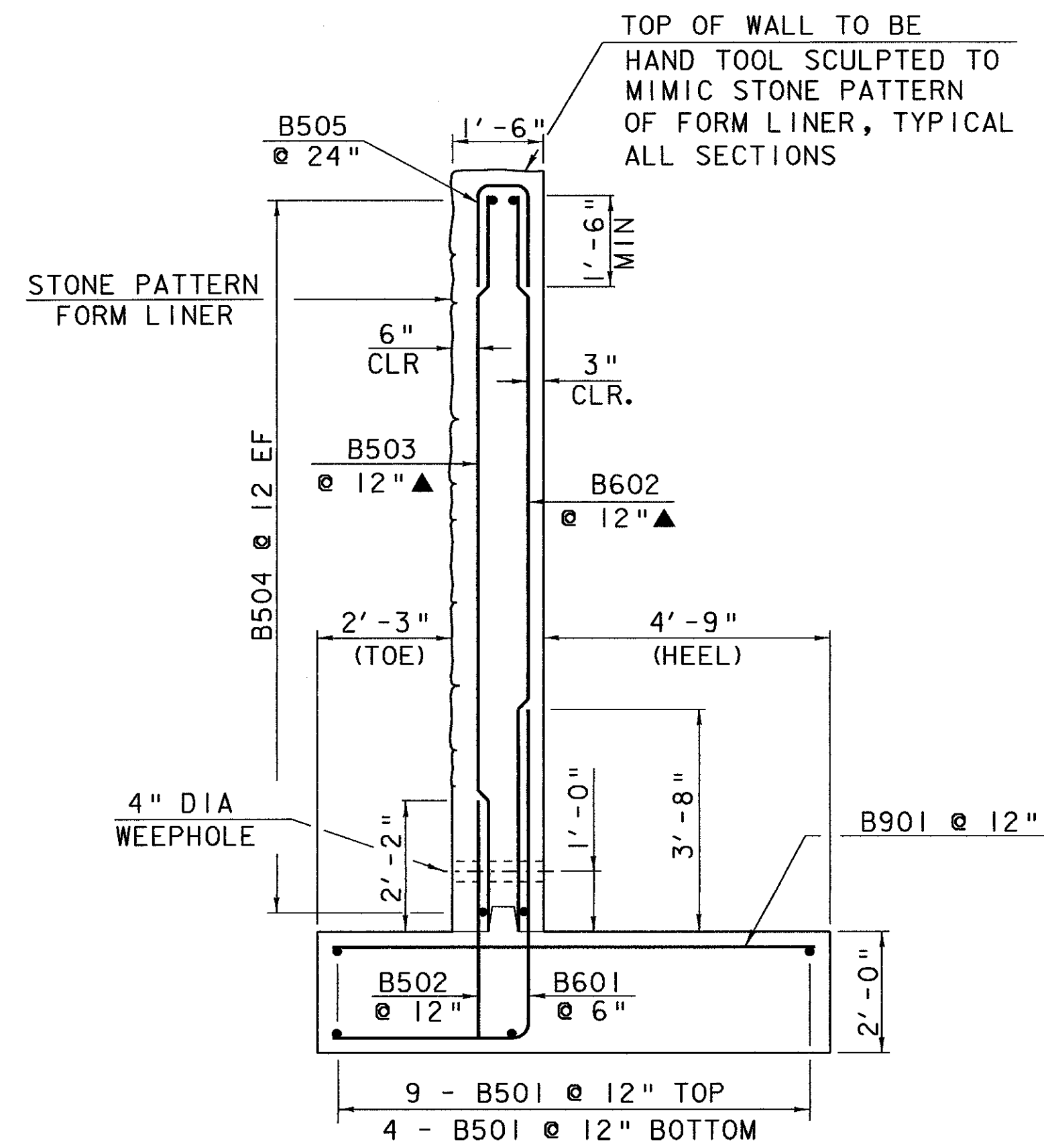


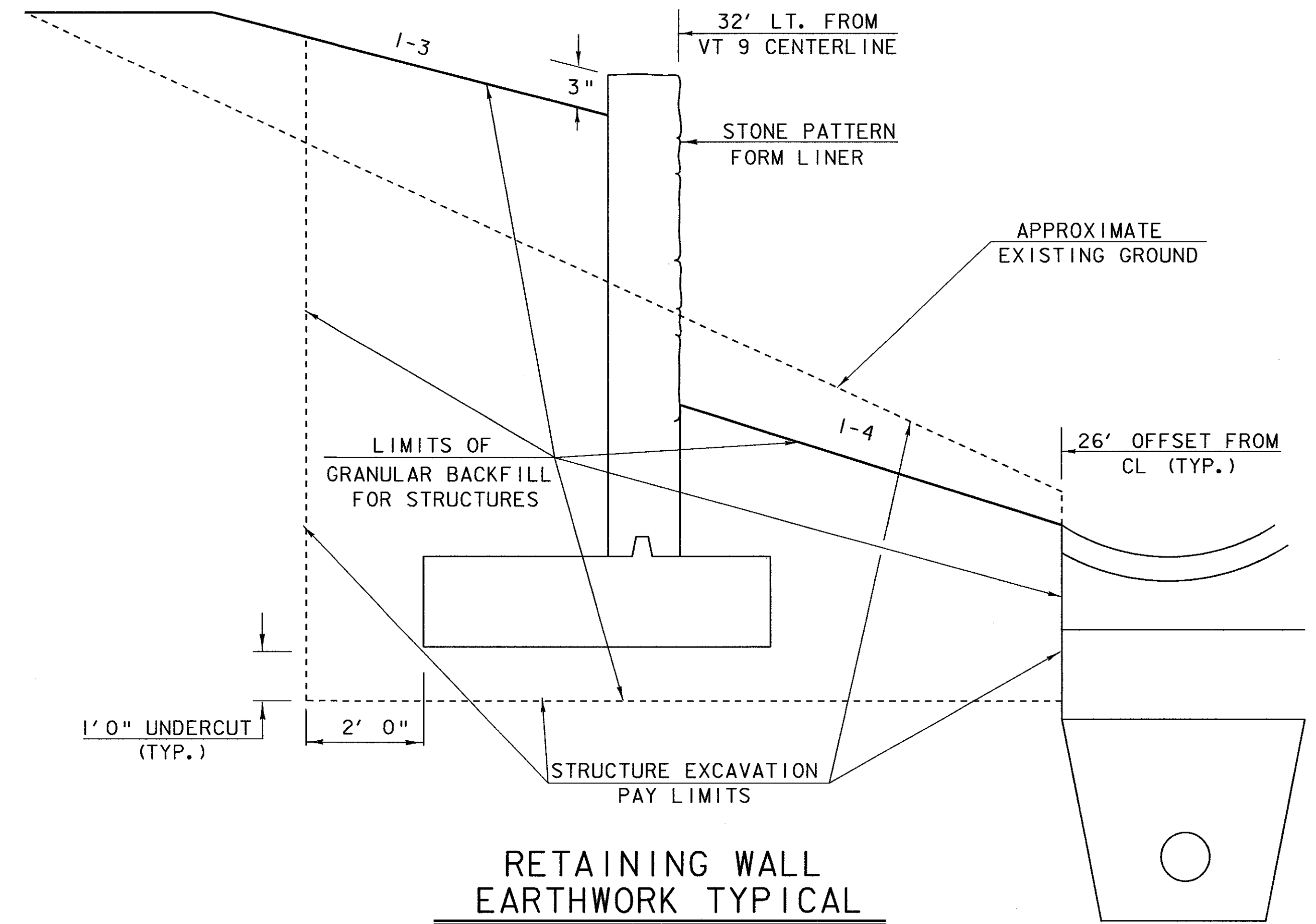
**RETAINING WALL  
TYPICAL A**

SECTION 1 & 6  
SCALE: 1/2" = 1'-0"  
10.5' DESIGN HT.



**RETAINING WALL  
TYPICAL B**

SECTIONS: 2, 3, 4, & 5  
SCALE: 1/2" = 1'-0"  
14.6' DESIGN HT.



**RETAINING WALL  
EARTHWORK TYPICAL**

(NOT TO SCALE)

**GENERAL NOTES**

- STONE PATTERN TO EXTEND 6" TO 12" BELOW GROUNDLINE
- STONE PATTERN FORM LINER TO BE USED ON EXPOSED FACE ONLY
- WATER REPELLENT SHALL BE APPLIED TO ALL EXPOSED CONCRETE SURFACES
- ALL CONCRETE SHALL BE CONCRETE, CLASS B - (HPC-B) (MODIFIED)
- ALL EXPOSED EDGES OF NEW CONCRETE SHALL BE CHAMFERED 1" X 1". JOINTS AND SCORE MARKS IN CONCRETE SHALL BE CONSTRUCTED AS SHOWN IN THE PLANS OR AS DIRECTED BY THE RESIDENT ENGINEER.
- THE KEY IN CONCRETE CONSTRUCTION JOINTS SHALL BE MONOLITHIC AND CONTINUOUS FOR THE FULL LENGTH OF THE JOINT. ANY UPWARD KEY SHALL BE PLACED INTEGRALLY WITH THE CONCRETE BELOW THE JOINT.
- FORM LINER PATTERN SHALL BE CUSTOM-ROCK INTERNATIONAL PATTERN NUMBER 11003 (RUSTIC ASHLAR) OR EQUIVALENT.

**NOTE:**

NF = NEAR FACE  
FF = FAR FACE  
EF = EACH FACE  
▲ = CUT TO FIT IN FIELD  
3" CLR. UNLESS OTHERWISE NOTED  
2'-2" BAR LAP UNLESS OTHERWISE NOTED

**STATE OF VERMONT  
AGENCY OF TRANSPORTATION**

Town Of <b>SEARSBURG-WILMINGTON</b>	Bridge No.
Highway No. <b>VT 9</b>	Log Sta. Surv. Sta.

**MORSE WALL**

**WALL TYPICAL SECTIONS**

Designed By <b>J. LACROIX</b>	Drawn By <b>J. LACROIX</b>
Checked By <b>G. ROY</b>	Project Manager <b>R.R. WHITCOMB</b>
Date <b>2/02</b>	Date <b>2/02</b>
PROJECT <b>SEARSBURG-WILMINGTON</b>	PROJECT NO. <b>NHF 010-1 (18)</b>
I.G.C. Info.78d096\Structures\sd096typ2a.dgn	sd096typ2.i
Bridge Sheet No. <b>BR601</b>	Sheet <b>24B</b> of <b>435</b>