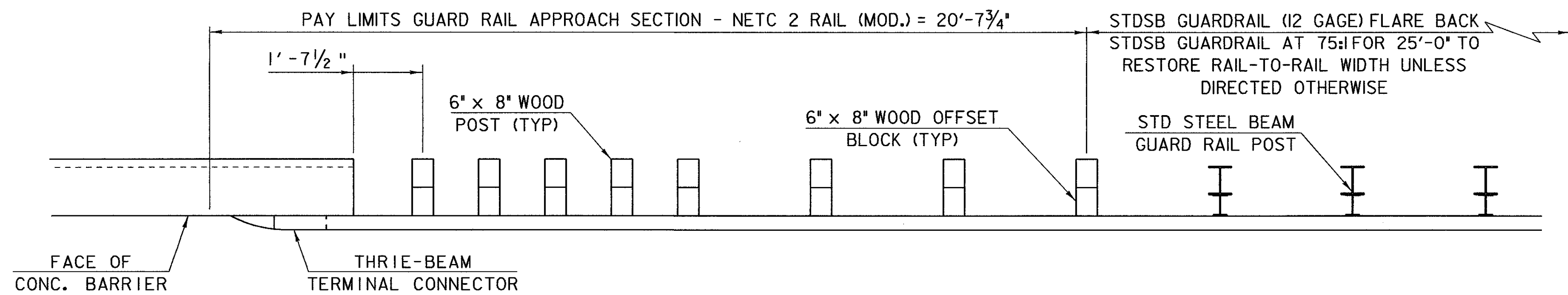
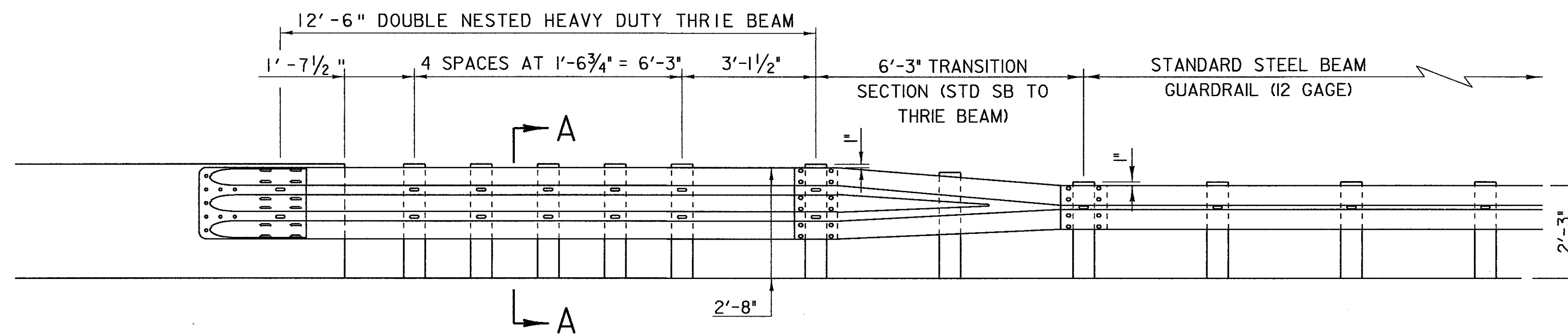


**NOTES**

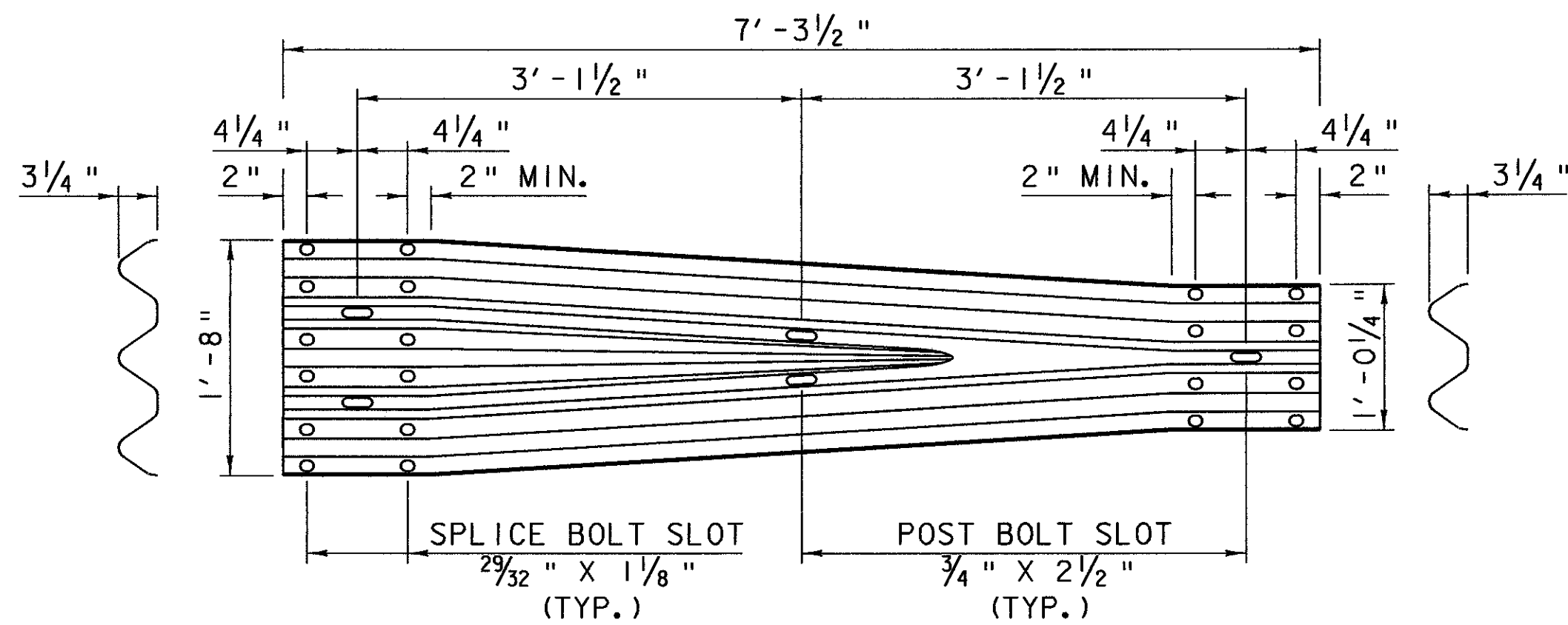
1. THRIE BEAM RAIL, TRANSITION SECTION, WOOD POSTS AND OFFSET BLOCKS SHALL CONFORM TO SECTION 728 - GUARD RAIL, GUIDE POSTS AND BARRIERS OF THE STANDARD SPECIFICATIONS FOR CONSTRUCTION.
2. TERMINAL CONNECTOR AND CONNECTOR PLATE SHALL BE ASTM A709/A709M, GRADE 36.
3. BOLTS SHALL BE ROUND HEAD, AASHTO M164, TYPE 1. NUTS SHALL COMPLY WITH AASHTO M291. WASHERS SHALL COMPLY WITH AASHTO M293 (ASTM A563).
4. ALL PARTS SHALL BE GALVANIZED AFTER FABRICATION IN ACCORDANCE WITH AASHTO M111, EXCEPT THAT HARDWARE SHALL MEET THE REQUIREMENTS OF AASHTO M232.
5. ALL APPROACH RAIL SPLICES SHALL BE LAPPED IN THE DIRECTION OF TRAFFIC FLOW.
6. ALL MATERIALS AND INSTALLATION COSTS FOR THE GUARD RAIL APPROACH SECTION, INCLUDING CONNECTOR PLATE, TERMINAL CONNECTOR, RAIL, POSTS, OFFSET BLOCKS, AND ATTACHMENT HARDWARE SHALL BE PAID FOR UNDER ITEM 621.72 "GUARD RAIL APPROACH SECTION, NETC 2 RAIL (MOD.)".



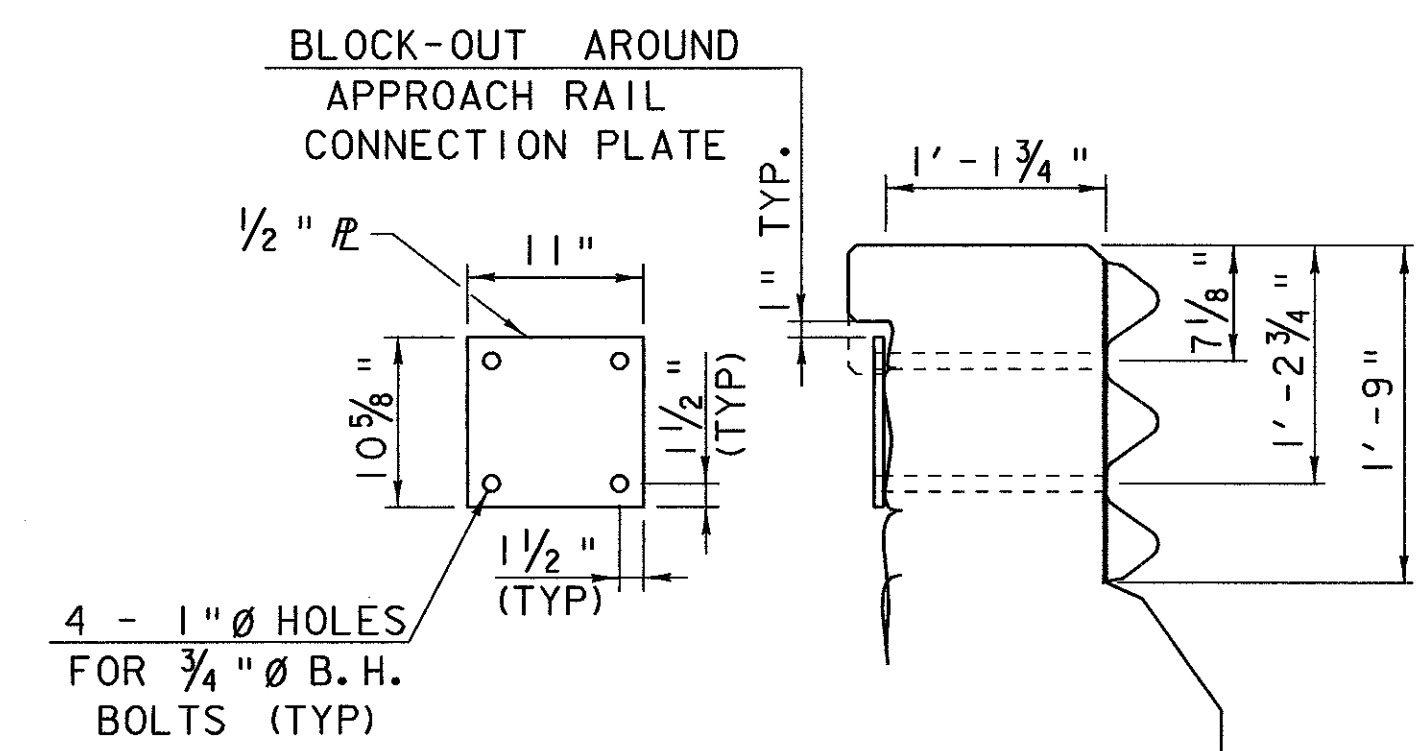
**RAILING TRANSITION PLAN**  
NOT TO SCALE



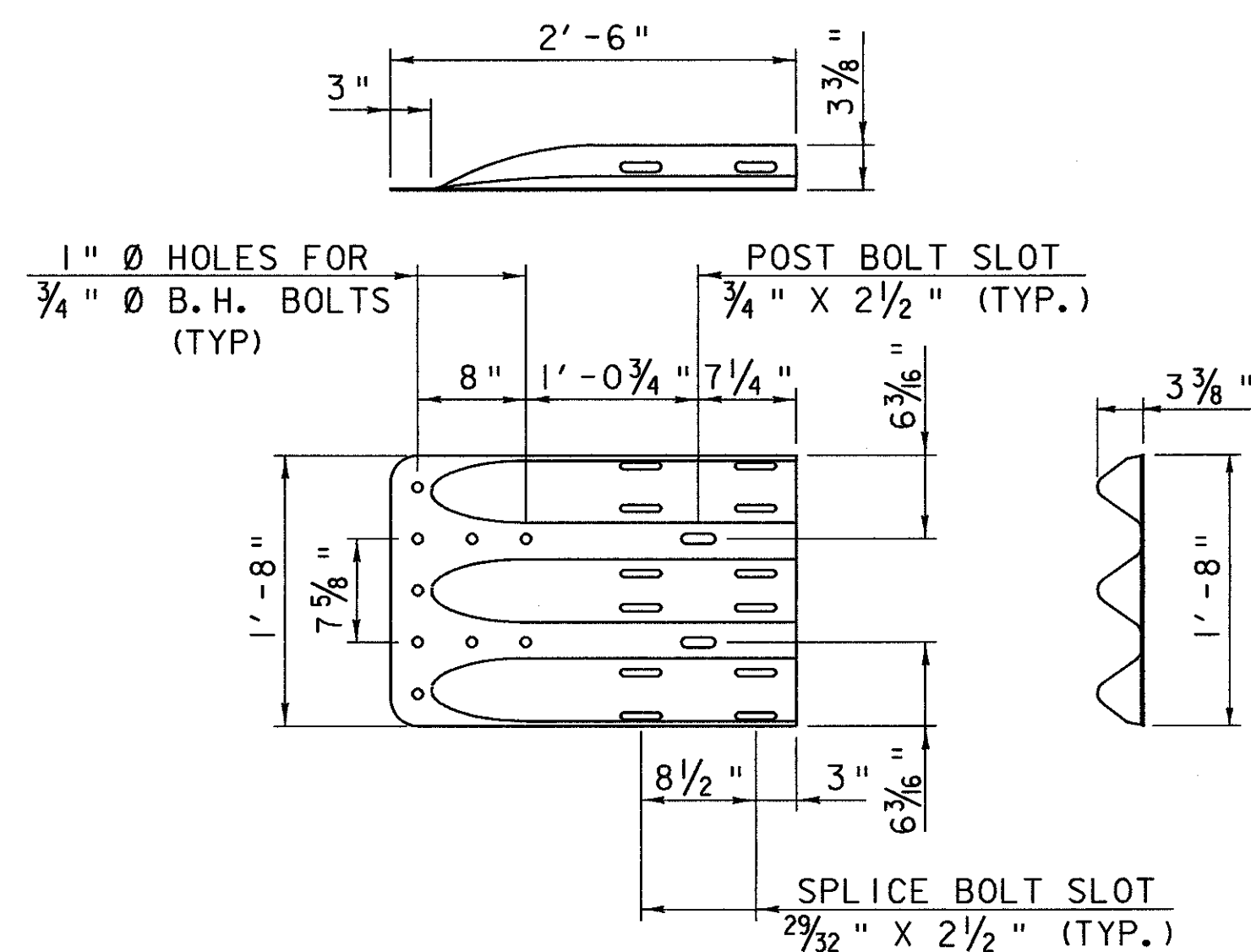
**RAILING TRANSITION ELEVATION**  
NOT TO SCALE



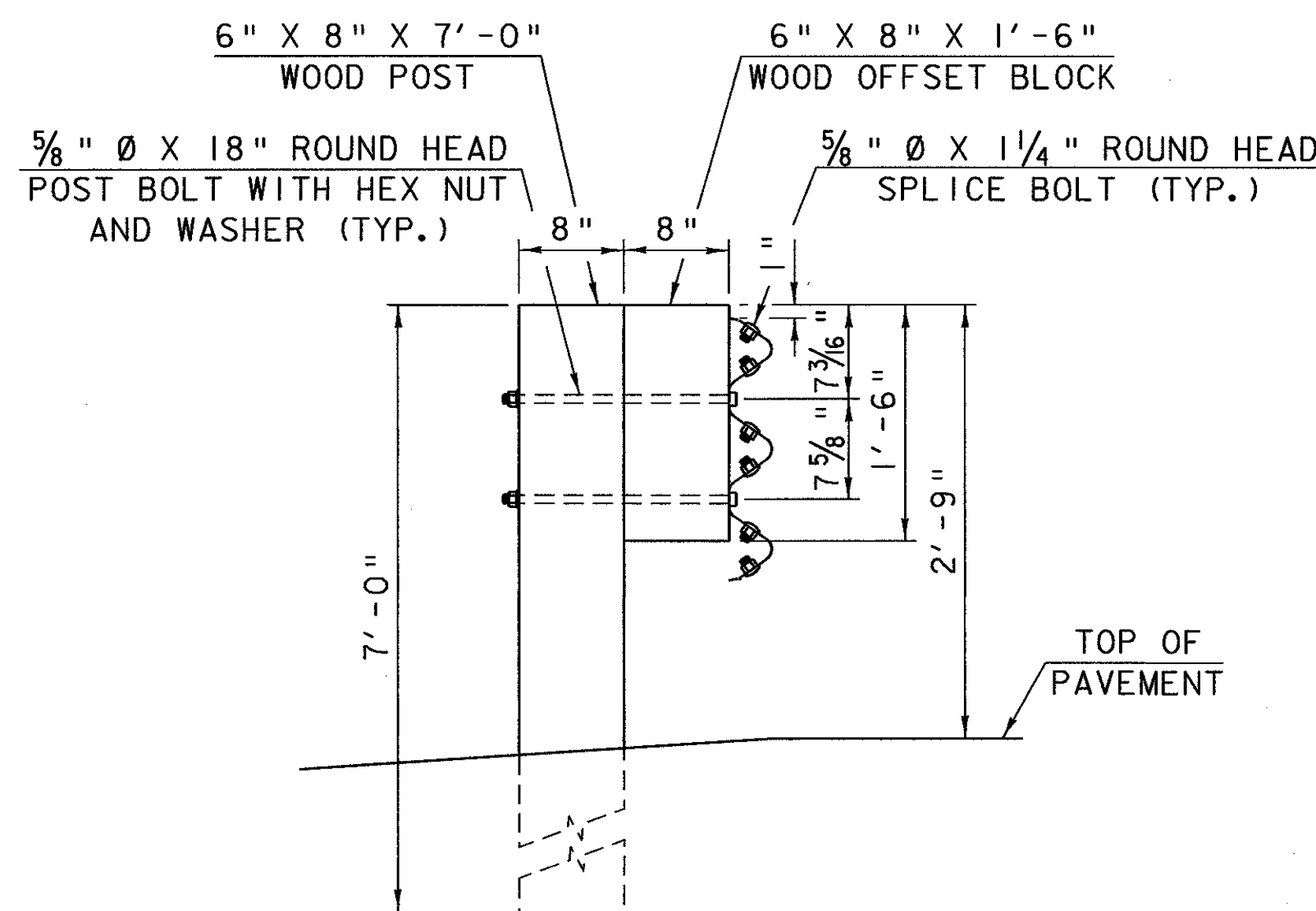
**THRIE-BEAM TO W-BEAM TRANSITION SECTION**  
SCALE: 1" = 1'-0"



**CONNECTION DETAIL**  
SCALE: 1" = 1'-0"



**THRIE-BEAM TERMINAL CONNECTOR**  
SCALE: 1" = 1'-0"  
(ARTBA HM-TF-13 / RE-67)



**SECTION A-A**  
SCALE: 1" = 1'-0"

<b>STATE OF VERMONT AGENCY OF TRANSPORTATION</b>			
Town of <b>SEARSBURG-WILMINGTON</b>	Bridge No.		
Highway No. <b>VT 9</b>	Log Sta.		
	Surv. Sta.		
<b>CATAMOUNT TRAIL WALL</b>			
<b>APPROACH RAIL DETAILS</b>			
Designed By <b>R. WHITCOMB</b>	Drawn By <b>J. LACROIX</b>		
Checked By <b>G. ROY</b>	Date <b>2/02</b>	Project Manager <b>R. R. WHITCOMB</b>	Date <b>2/02</b>
PROJECT <b>SEARSBURG-WILMINGTON</b>		PROJECT NO. <b>NHF 010-1 (18)</b>	
I.G.C. Info. 78d096\Structures\sd096typ.dgn		sd096rai.i	
Bridge Sheet No. <b>BR501</b>	Sheet 240 of 435		