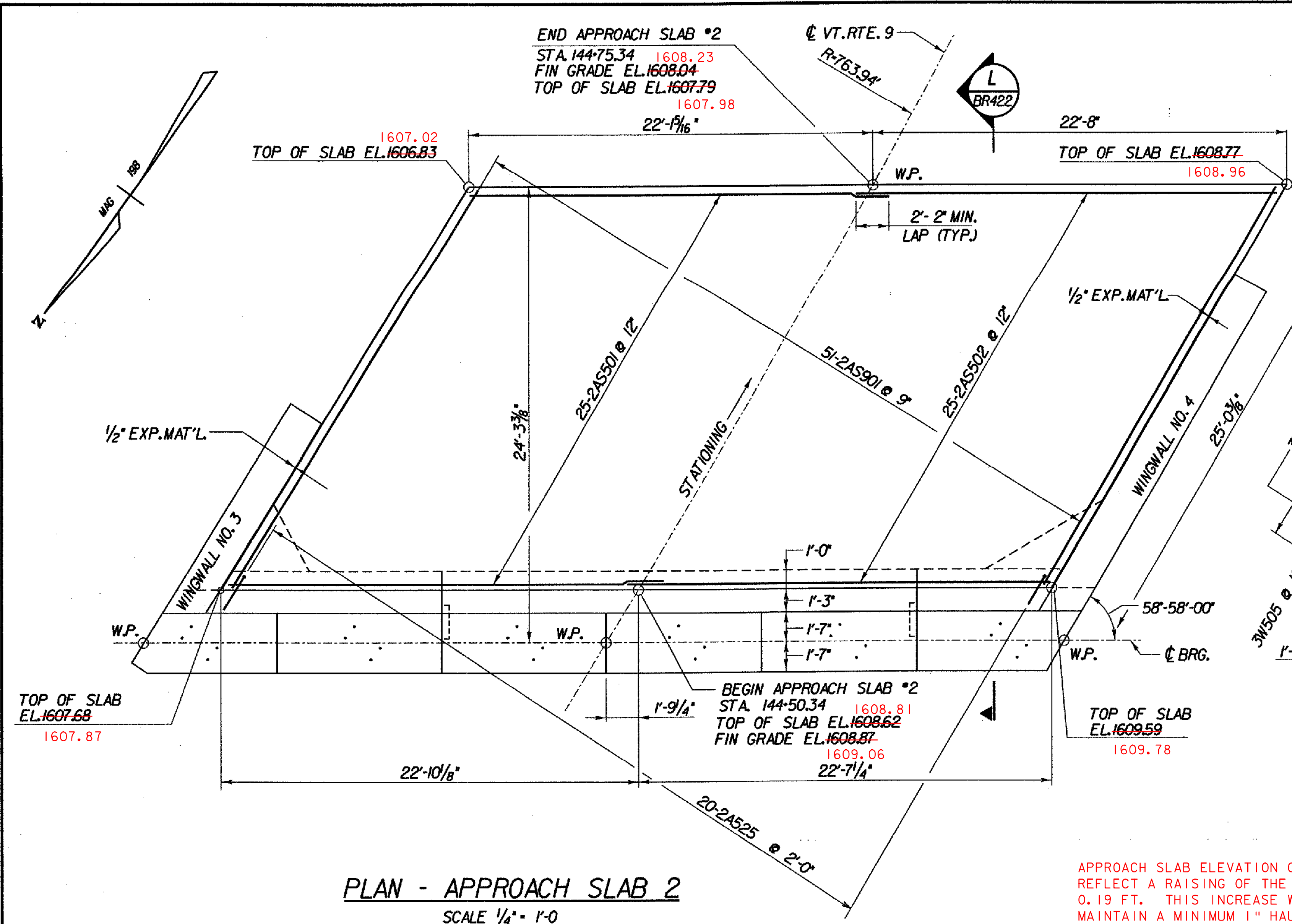
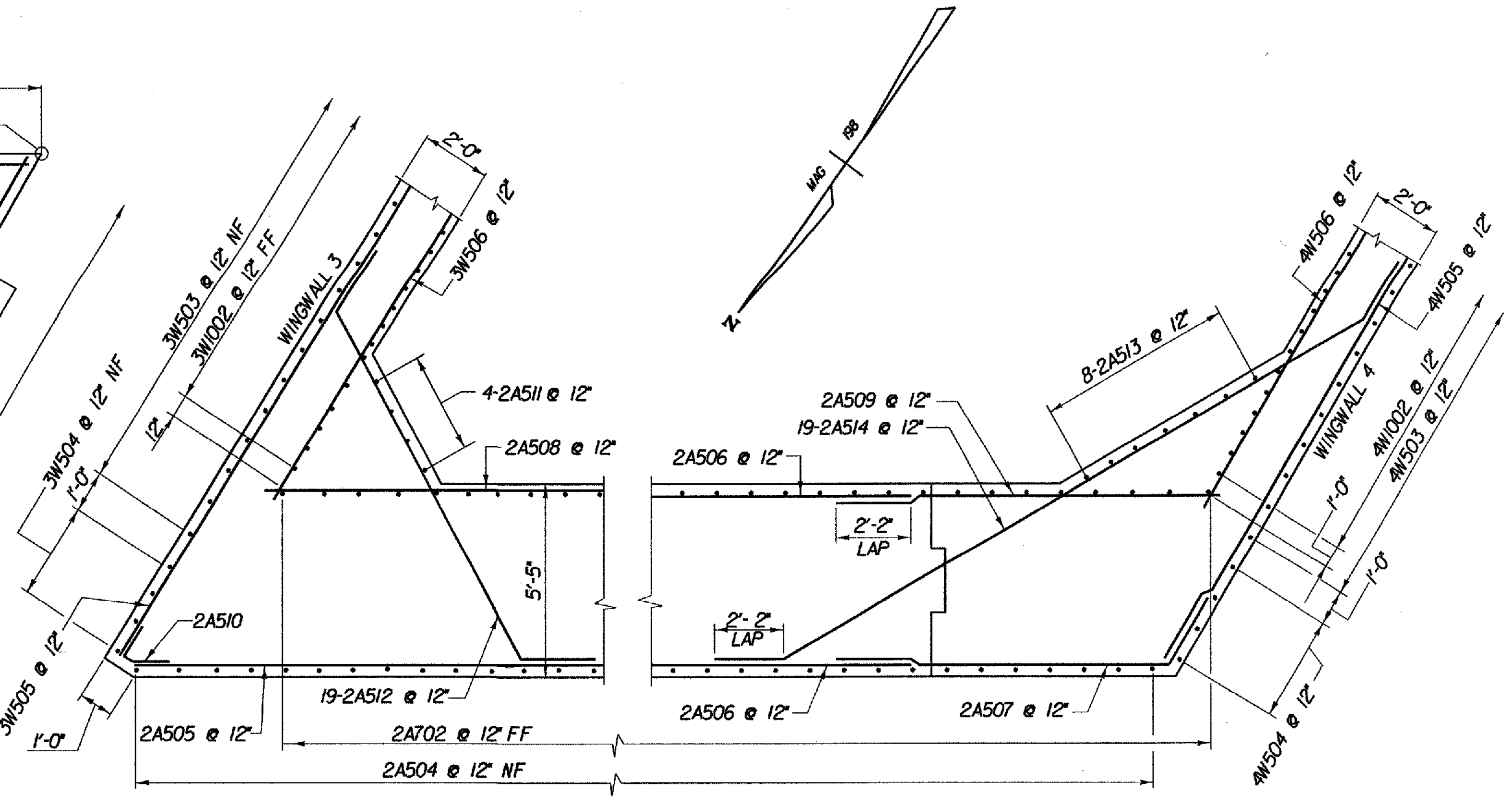


FILE NAME: s:\9755\MS\STN\15\BRG2258\255-epslab2.dwg
 DATE/TIME: 12/12/01
 USER: M.J.J. SNT, No. 28

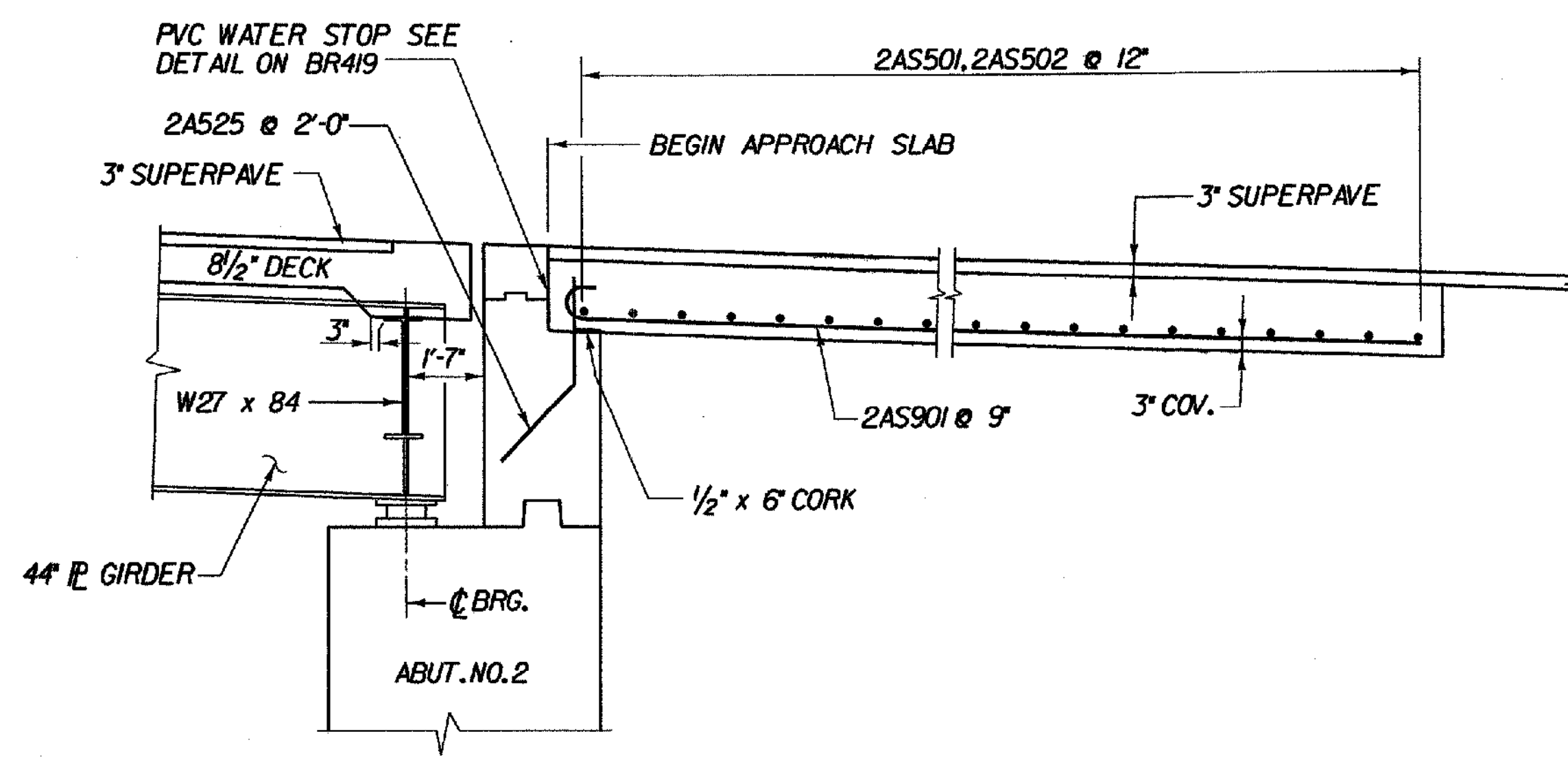


PLAN - APPROACH SLAB 2
 SCALE 1/4" = 1'-0"
 1 0 2 4 6



CORNER AND FILLET DETAILS ABUTMENT 2
 SCALE 3/8" = 1'-0"
 1 0 1 2 3 4

APPROACH SLAB ELEVATION CORRECTIONS REFLECT A RAISING OF THE BRIDGE DECK 0.19 FT. THIS INCREASE WAS MADE TO MAINTAIN A MINIMUM 1" HAUNCH.



L SECTION APPROACH SLAB 2
 SCALE 3/8" = 1'-0"
 1 0 1 2 3 4

| | |
|--|------------------------------------|
| MCFARLAND-JOHNSON ENGINEERS, INC. BINGHAMTON NEW YORK | |
| STATE OF VERMONT AGENCY OF TRANSPORTATION | |
| Town Of SEARSBURG | Bridge No. 258 |
| Highway No. VT. RTE. 9 | Log Sta. Surv. Sta. 143+11 |
| VT. RTE. 9 OVER DEERFIELD RIVER APPROACH SLAB 2 DETAILS | |
| Designed By D. VIEN | Drawn By J. LAGONE |
| Checked By M. OLSTAD | Bridge Design Supervisor M. OLSTAD |
| Date 5/2001 | Date |
| PROJECT SEARSBURG - WILMINGTON | PROJECT NO. NHF 010-1181 |
| I.G.C. Info. | |
| Bridge Sheet No. BR422 | Sheet 228 of 435 |

| | | |
|---|-----------|---------|
| REVISIONS: BY CLOUGH HARBOUR & ASSOC. LLP | APP'D BY: | DATE: |
| ABUTMENT REINFORCEMENT AND DIMENSIONS REVISED | MWO | 5/18/01 |