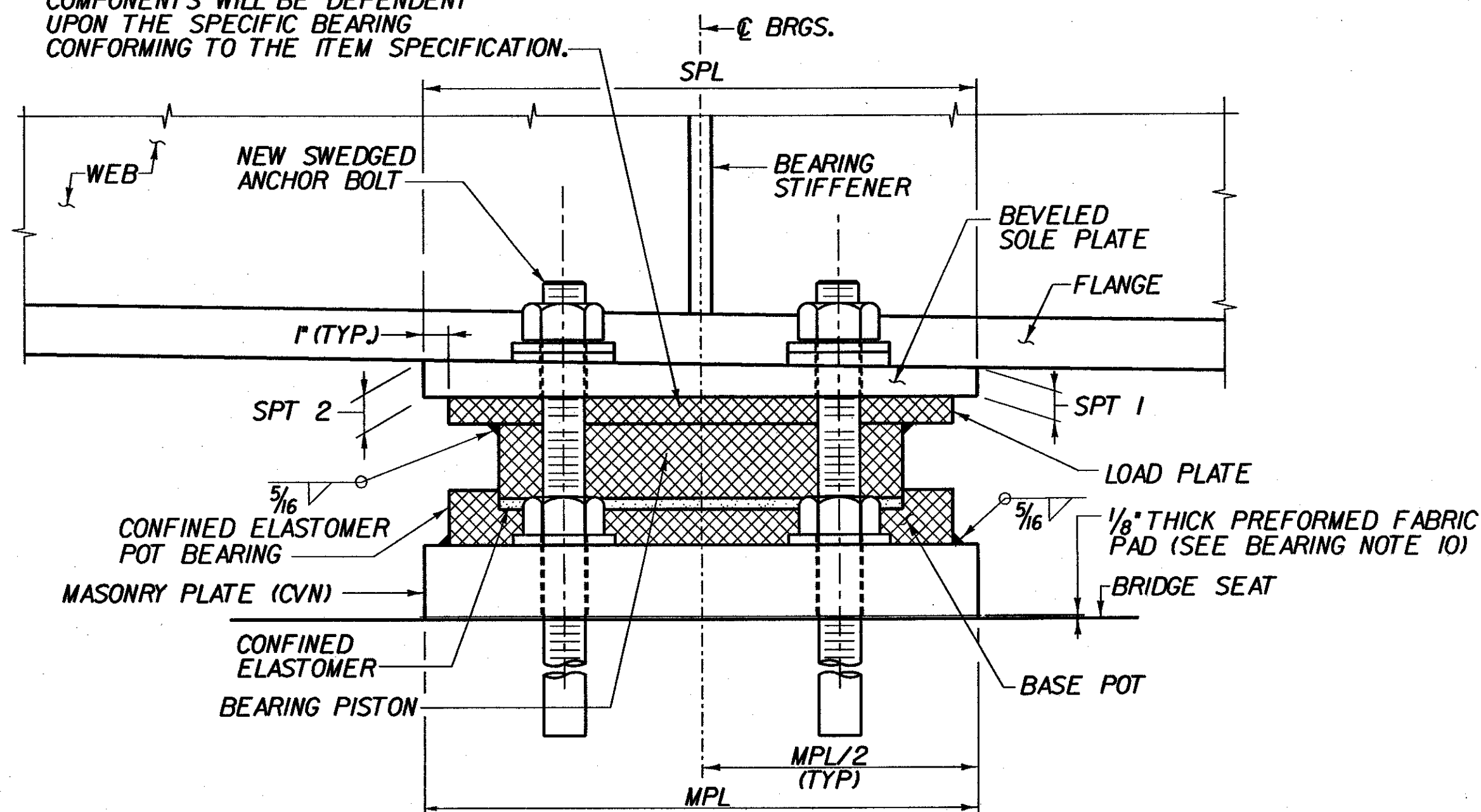
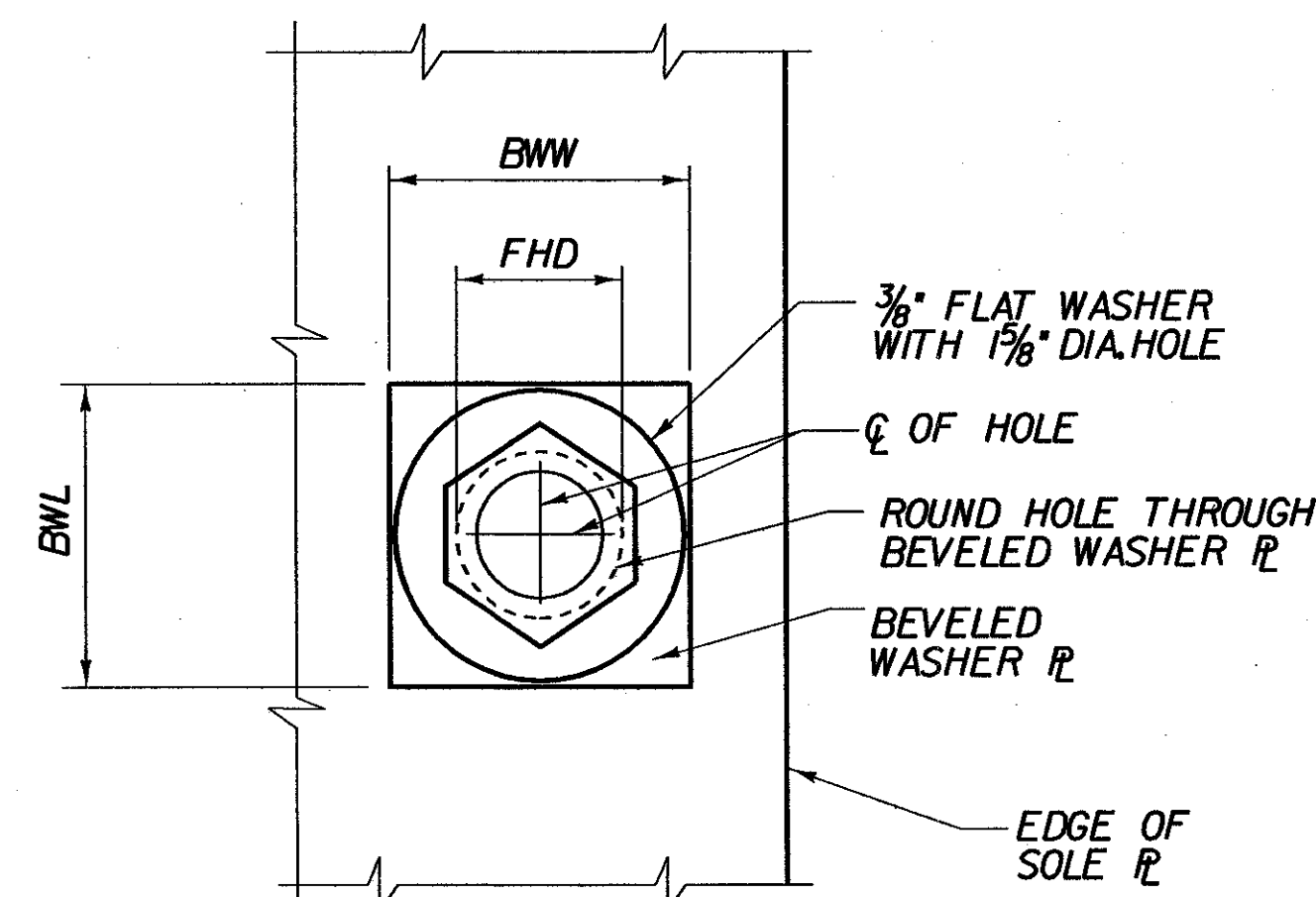


**B** FIXED BEARING  
BR411 (NOT TO SCALE)

THE CROSS HATCHED COMPONENTS OF THE BEARING ARE SHOWN FOR REPRESENTATIVE PURPOSES ONLY. THE ACTUAL CONFIGURATION OF THE COMPONENTS WILL BE DEPENDENT UPON THE SPECIFIC BEARING CONFORMING TO THE ITEM SPECIFICATION.



**A** FIXED BEARING  
BR411 (NOT TO SCALE)



**I** TYPICAL WASHER PLATE DETAIL  
BR411 (NOT TO SCALE)

- NOTES:**
- FOR BEARING NOTES, SEE SHEET BR410.
  - FOR FIXED BEARING TABLE, SEE SHEET BR412.

- \*\* BEARINGS SHALL BE CAPABLE OF MAINTAINING A MINIMUM LOAD OF 20% OF MAXIMUM DESIGN CAPACITY AT ALL TIMES.
- \*\* ALL BEARINGS SHALL BE CAPABLE OF RESISTING BOTH THEIR MAXIMUM HORIZONTAL AND VERTICAL DESIGN LOADS

**STATE OF VERMONT  
AGENCY OF TRANSPORTATION**

Town of	SEARSBURG	Bridge No.	25B
Highway No.	VT. RTE. 9	Log Sta.	
		Surv. Sta.	
VT. RTE. 9 OVER DEERFIELD RIVER			
FIXED BEARING DETAILS - BR 25B			
Designed By	D. VIENI	Drawn by	B. DILLENBECK
Checked By	M. OLSTAD	Bridge Design Supervisor	M. OLSTAD
Date	2/2002	Date	2/2002
PROJECT	SEARSBURG - WILMINGTON	PROJECT NO.	NHF 010-1181
L.G.C. Info.		Bridge Sheet No. BR411	

**CHA CLOUGH, HARBOUR & ASSOCIATES LLP**  
ENGINEERS, SURVEYORS, PLANNERS & LANDSCAPE ARCHITECTS  
11 WINNERS CIRCLE ALBANY, NEW YORK, 12208