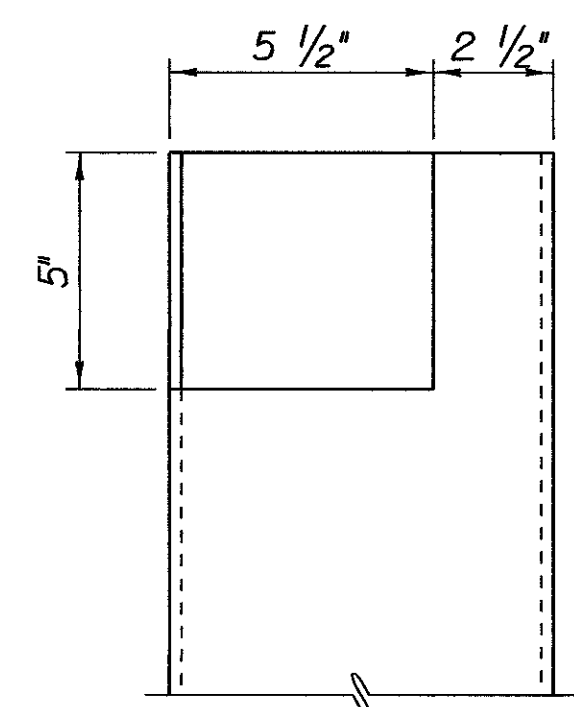
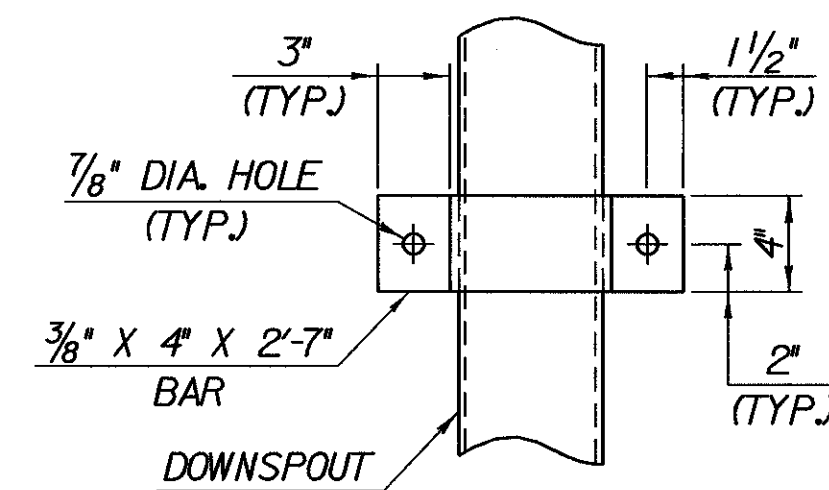


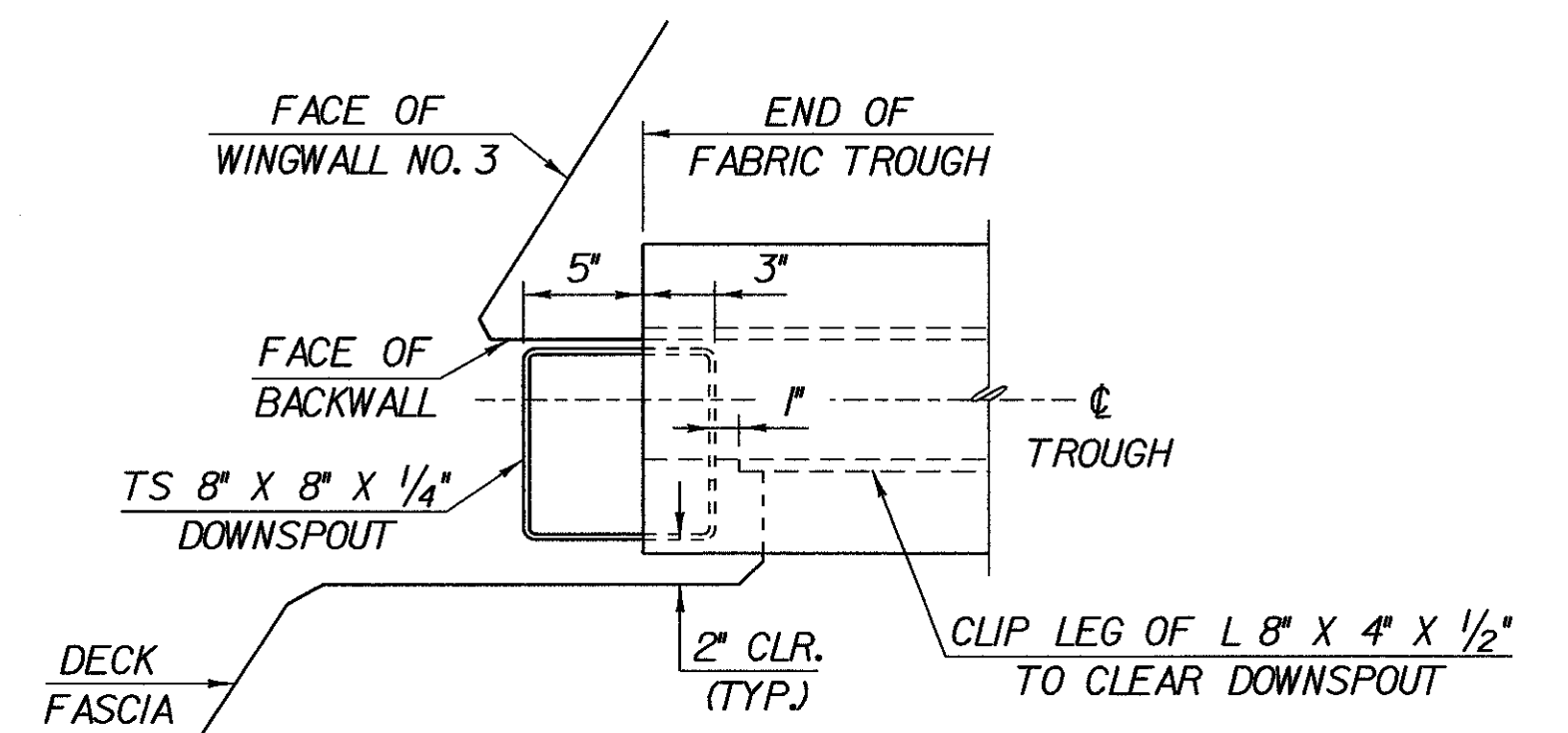
DOWNSPOUT ELEVATION
SCALE: 1" = 1'-0"



DOWNSPOUT CUTOUT FOR TROUGH
SCALE: 3" = 1'-0"

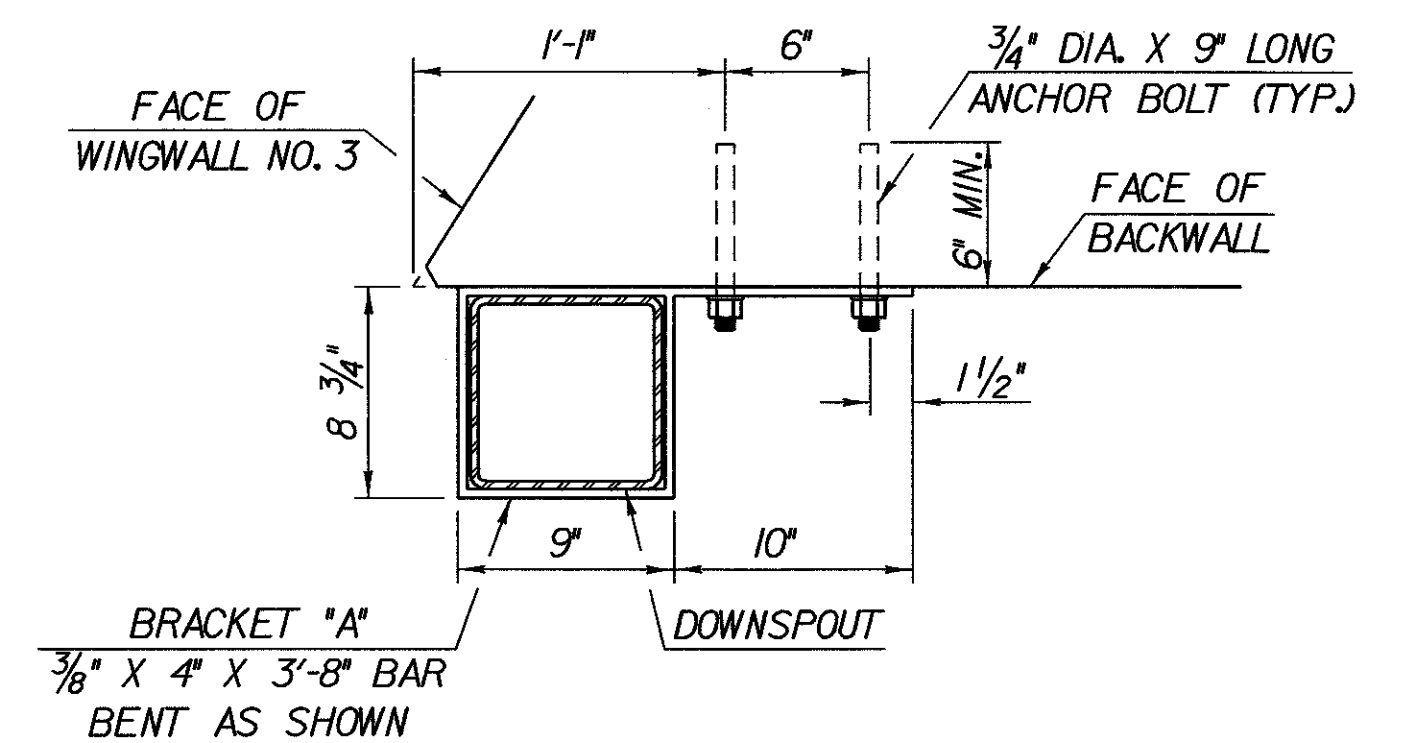


ELEVATION VIEW OF BRACKET "B"
SCALE: 1 1/2" = 1'-0"



BOTTOM OF DECK TO BE BOXED OUT AS SHOWN TO ALLOW DOWNSPOUT TO COME UP UNDERNEATH THE DRAIN TROUGH. DECK REINFORCING STEEL TO BE CUT AS REQUIRED TO MAINTAIN 3" CLEARANCE FROM BOXOUT

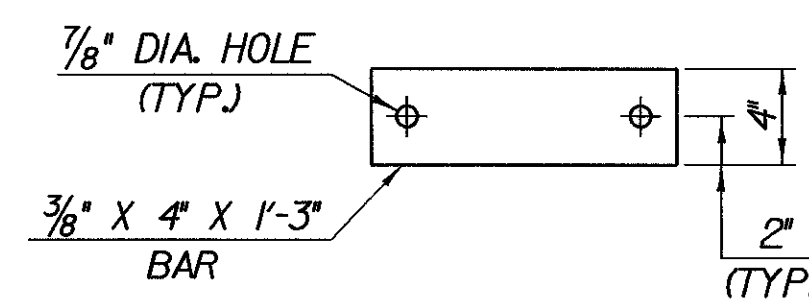
PLAN VIEW OF DECK BOXOUT FOR DOWNSPOUT
SCALE: 1 1/2" = 1'-0"



DETAILS FOR ATTACHING DOWNSPOUT TO BACKWALL
SCALE: 1 1/2" = 1'-0"

DOWNSPOUT NOTES

- HOLLOW STRUCTURAL STEEL TUBING SHALL CONFORM TO A500 OR A501.
- ALL PLATES, BARS, AND ANGLES SHALL CONFORM TO AASHTO M270 GR. 36.
- DOWNSPOUTS SHALL BE GALVANIZED IN ACCORDANCE WITH ASTM A123 AFTER FABRICATION.
- ALL BOLTS AND RELATED HARDWARE SHALL BE ASTM A307 AND SHALL BE GALVANIZED IN ACCORDANCE WITH ASTM A153 (AASHTO M232).
- AREAS WHERE THE GALVANIZING HAS BEEN REMOVED FROM THE DOWNSPOUT EITHER BY CUTTING, BURNING, WELDING, PLACING, OR ANY OTHER MEANS SHALL BE REPAIRED IN CONFORMANCE WITH SUPPLEMENTAL SPECIFICATION 513.
- ALL MATERIALS AND INSTALLATION COSTS FOR THE DOWNSPOUTS, INCLUDING STEEL TUBING, RELATED HARDWARE, AND ANCHOR BOLTS SHALL BE PAID FOR UNDER ITEM 506.55 "STRUCTURAL STEEL (PLATE GIRDER)".



ELEVATION VIEW OF BAR "B"
SCALE: 1 1/2" = 1'-0"

STATE OF VERMONT AGENCY OF TRANSPORTATION

Town Of SEARSBURG-WILMINGTON	Bridge No. 25B
Highway No. VT. ROUTE 9	Log Sta. Surv. Sta.
VT. ROUTE 9 OVER THE DEERFIELD RIVER	
DOWNSPOUT DETAILS - BR 25B	
Designed By G. ROY	Drawn By G. ROY
Checked By R. WHITCOMB	Date 2/02
Bridge Design Supervisor R. R. WHITCOMB	Date 2/02
PROJECT SEARSBURG-WILMINGTON	PROJECT NO. NHF 010 - 1 (18)
I.G.C. Info. 78d096Structures\sd096exp.dgn	sd096dsd1
Bridge Sheet No. BR 409C	Sheet 215 of 435