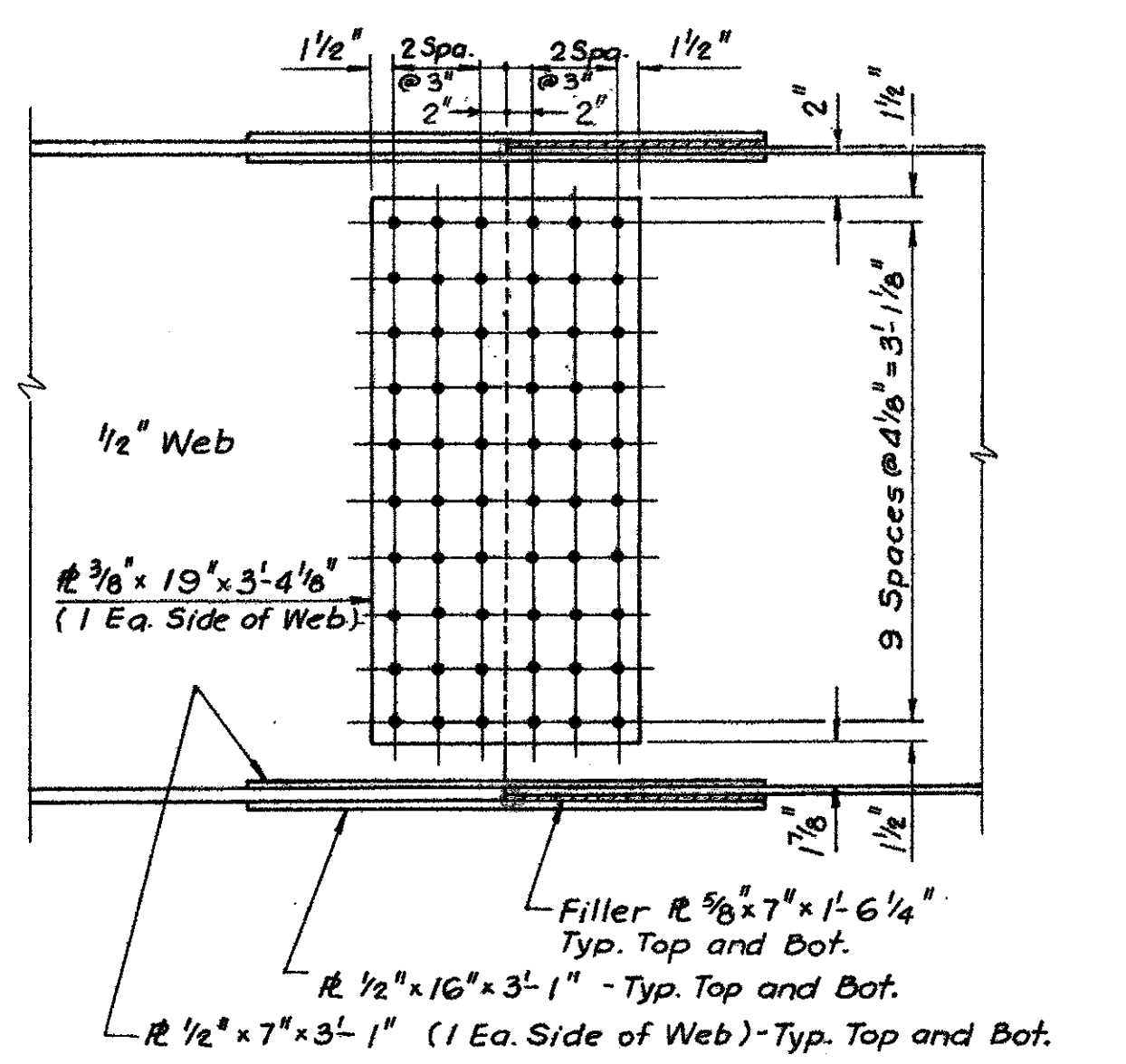
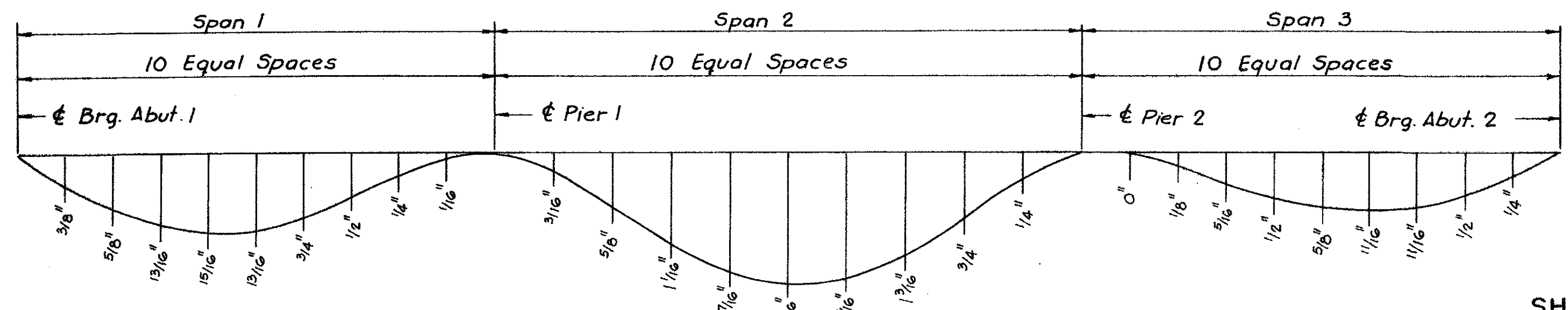


PLAN

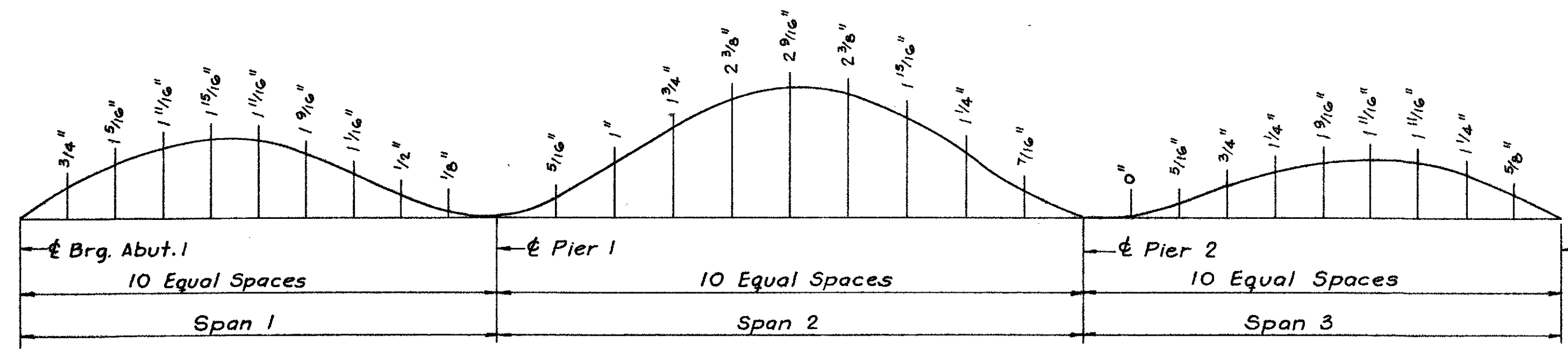


ELEVATION

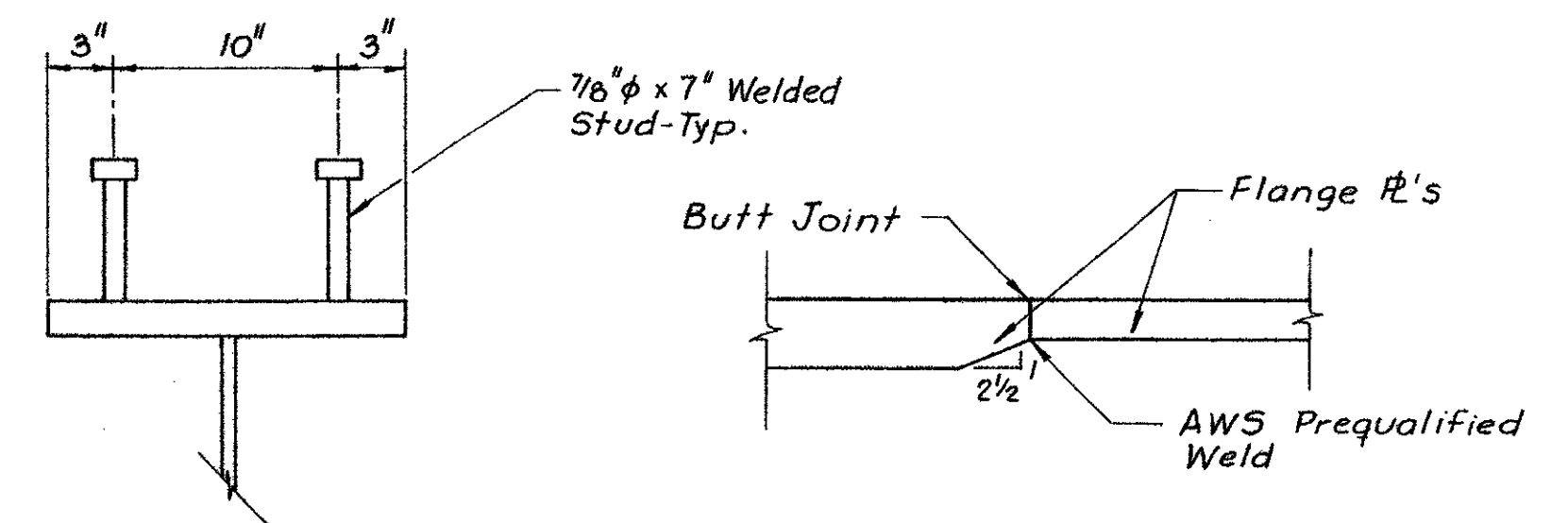
FIELD SPLICE  
Scale: 1"=1'-0"



DEFLECTION DIAGRAM  
Not to scale



CAMBER DIAGRAM  
Not to scale

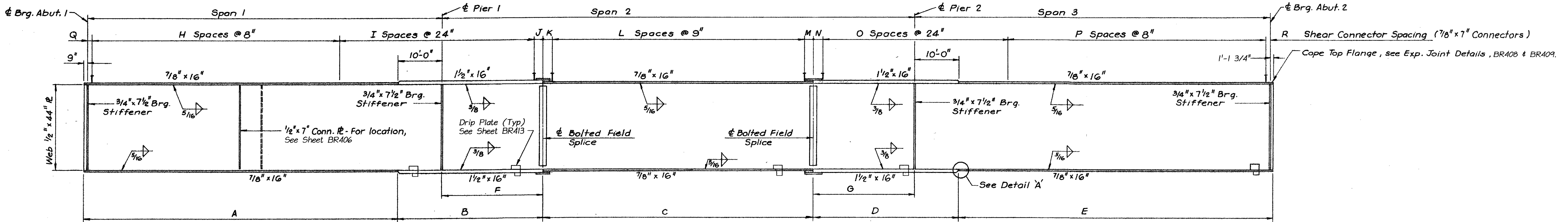


SHEAR CONNECTOR DETAIL  
Scale: 1/2"=1'-0"

DETAIL A  
Scale: 3/4"=1'-0"

NOTES

1. For Framing Plan, see Sheet BR406.
2. For Typical Section, see Sheet BR404.
3. All Flange and Web plates require Charpy V-Notch Test, as specified in Subsection 714.03.
4. Ends of girders and bearing stiffeners at Abutment and Piers shall be vertical in the erected position.
5. All girders shall be cambered as shown on the Camber Diagram.
6. All field connections shall be made with 7/8" H.S. bolts in 1 1/2" holes.
7. Girder splices shall be shop fitted to insure the desired camber and matching of members is obtained.
8. Girder splices shall be paid for in accordance with unit price bid for Structural Steel.
9. Shear Connectors shall be paid for in accordance with unit price bid for Item 508.15.
10. All Structural Steel shall be AASHTO M270 GR50W.
11. ALL STRUCTURAL STEEL WITHIN 10 FEET OF END OF GIRDER SHALL BE COATED WITH A PROTECTIVE PAINT SYSTEM, WITH THE FINAL COAT TO BE DARK BROWN (COLOR CHIP # 20059) TO BLEND WITH THE WEATHERING STEEL. THE COST OF PAINTING SHALL BE PAID UNDER ITEM 513.25. "STRUCTURAL PAINTING SHOP APPLIED".
12. IN AREAS OF UNPAINTED STEEL, CONTACT SURFACES OF BOLTED CONNECTIONS SHALL BE BLAST CLEANED IF RUSTED BEFORE CONNECTION IS MADE. IN AREAS OF PAINTED STEEL, PRIMER SHALL REMAIN ON THE SURFACES OF STEEL CONNECTION CONTACTS.



GIRDER ELEVATION  
Not to scale

MARK	SPAN 1	SPAN 2	SPAN 3	GIRDER RADIUS	A	B	C	D	E	F	G	H	I	J	K	L	M	N	O	P	Q	R
G1	83'-11 3/4"	110'-4 7/16"	82'-0 1/16"	745'-2 1/4"	74'-8 3/4"	33'-0"	69'-4 7/16"	28'-0"	73'-2 7/16"	23'-0"	18'-0"	90	22	2'-0"	2'-0 3/4"	87	2'-0 1/16"	2'-0"	20	86	0'-11 3/4"	0'-8 1/16"
G2	82'-8 1/16"	109'-4 3/4"	81'-7 1/2"	752'-8 1/4"	73'-5 1/16"	33'-0"	63'-4 3/4"	33'-0"	72'-9 1/4"	23'-0"	23'-0"	88	22	2'-0"	2'-0 7/8"	79	2'-0 7/8"	2'-0"	22	87	1'-0 1/16"	0'-7 1/2"
G3	81'-6 1/16"	108'-5 7/16"	81'-2 1/2"	760'-2 1/4"	72'-3 1/16"	33'-0"	62'-5 7/16"	33'-0"	72'-4 1/4"	23'-0"	23'-0"	86	22	2'-0"	2'-4 1/4"	77	2'-4 3/16"	2'-0"	22	86	1'-2 1/16"	0'-10 1/2"
G4	80'-5 1/2"	107'-6 1/16"	80'-9 3/4"	767'-8 1/4"	71'-2 1/2"	33'-0"	65'-6 1/16"	29'-0"	71'-11 1/2"	23'-0"	19'-0"	85	22	2'-0"	2'-0 3/8"	82	2'-0 3/16"	2'-0"	20	85	0'-9 1/2"	1'-1 3/4"
G5	79'-5 3/8"	106'-8 7/8"	80'-5 1/8"	775'-2 1/4"	70'-2 3/8"	33'-0"	60'-8 7/8"	33'-0"	71'-6 7/8"	23'-0"	23'-0"	83	22	2'-0"	2'-2 15/16"	75	2'-2 15/16"	2'-0"	21	88	1'-1 3/8"	0'-9 1/8"
G6	78'-6 1/16"	105'-11 7/16"	80'-0 13/16"	782'-8 1/4"	69'-3 1/16"	31'-0"	61'-11 3/16"	33'-0"	71'-2 9/16"	21'-0"	23'-0"	79	22	2'-0"	2'-1 7/16"	78	2'-1 7/16"	2'-0"	22	84	0'-10 1/16"	1'-0 13/16"

**STATE OF VERMONT  
AGENCY OF TRANSPORTATION**

Town of SEARSBURG Bridge No. 25 B  
 Highway No. VT. ROUTE 9 Log Sta. 143+11  
 VT. ROUTE 9 OVER DEERFIELD RIVER  
 SURV. STA. 143+11

**GIRDER DETAILS**

Designed By RPJ Drawn By JJM  
 Checked By Date 11-85 Bridge Design Supervisor WTS Date 2/86

PROJECT SEARSBURG-WILMINGTON PROJECT NO. F010-1(18)  
 LG.C. Info. Bridge Sheet No. BR407 Sheet 209 of 435

McFARLAND - JOHNSON ENGINEERS, INC.

M. J. Job No. 83-3302.0  
 M. J. Dr. No. 2  
 M. J. Sht. No. 55