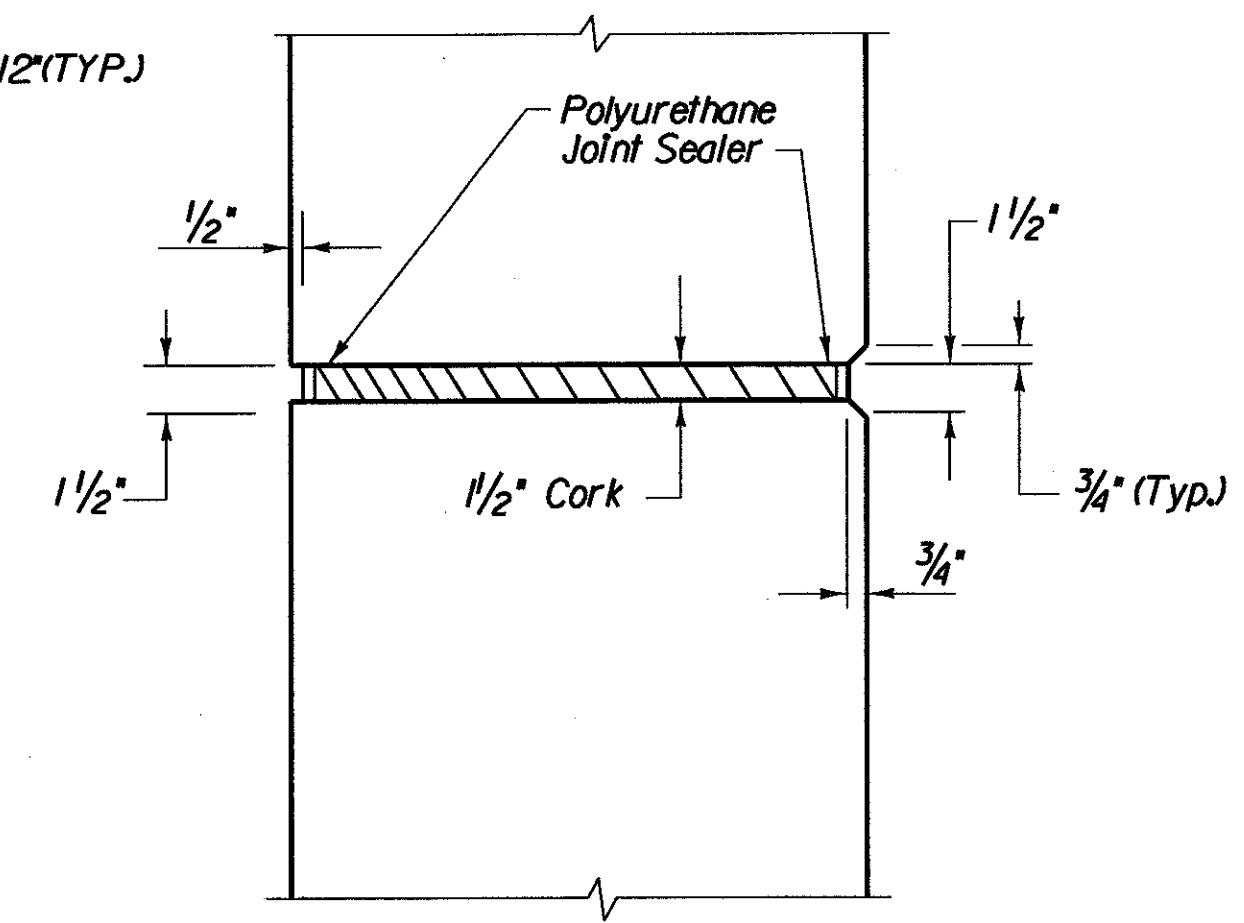


TYPICAL SECTION

SCALE 1/2" = 1'-0"
 1 0 1 2

* End weld @ 1/2" max from edge of Gusset Pl. (Typ.)

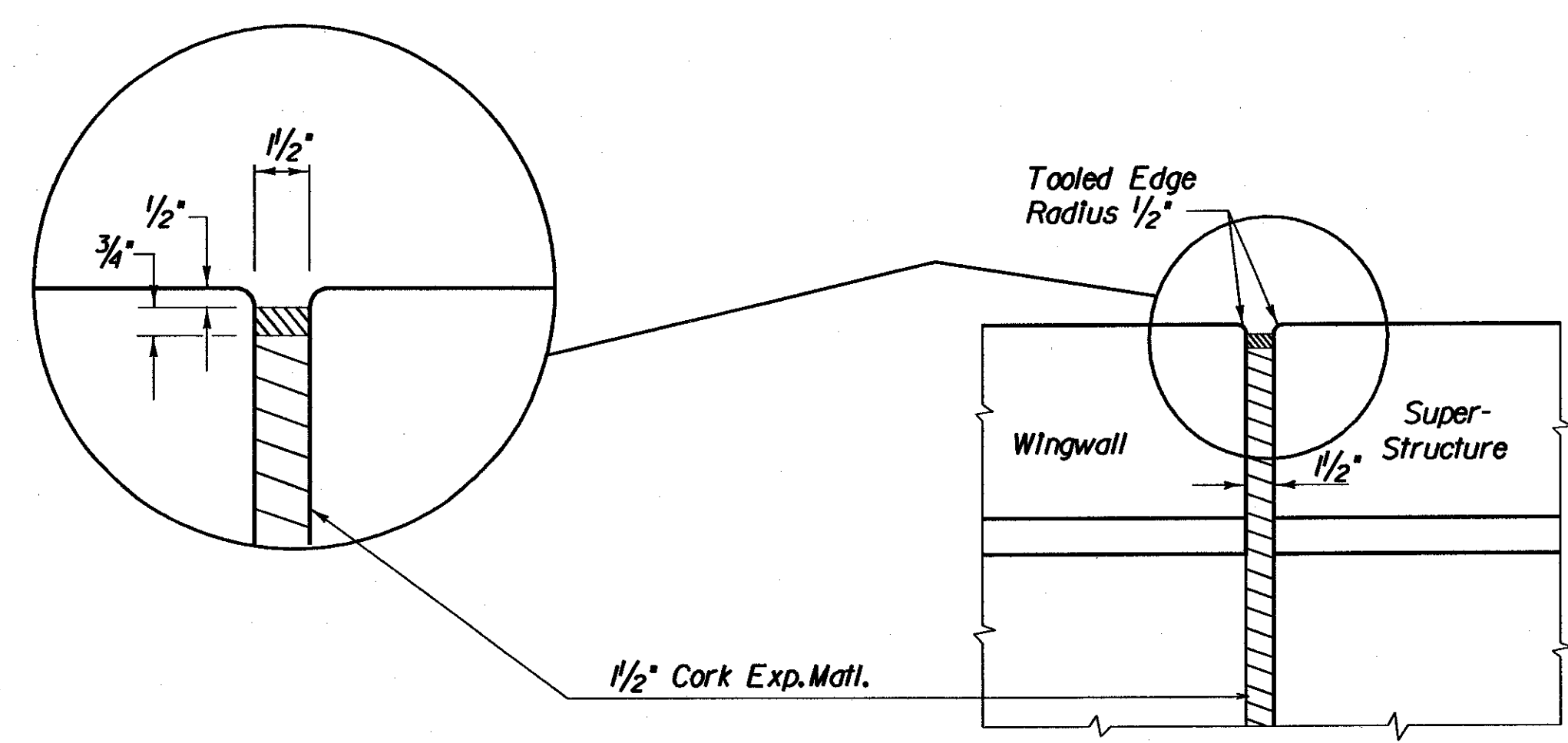


SECTION A-A

SCALE 1 1/2" = 1'-0"
 1 9 6 3 0

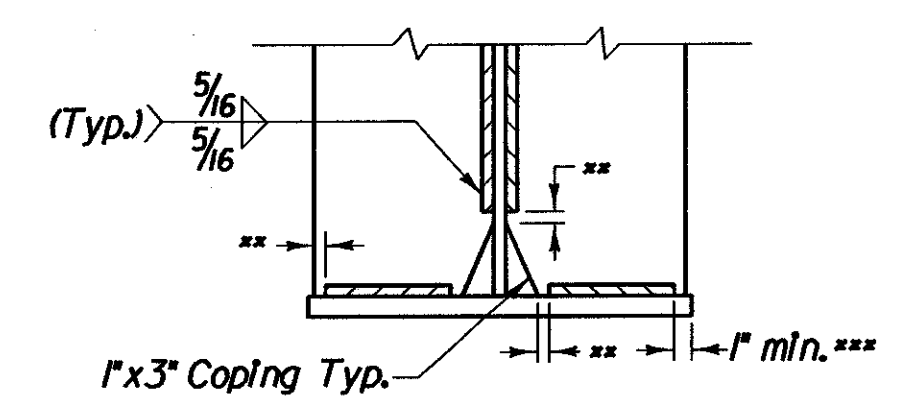
NOTES

1. For Deck Reinforcing Plan, see sheet BR405.
2. For Location of Section B-B and C-C, see sheet BR405.
3. For Spacing of Curb Joints, See Sheet BR15.
4. All crossframe connections shall be made with 7/8" Dia. H.S. bolts in 1 1/2" Dia. holes. Washers shall be placed at nut. All connections shall first be brought to a "snug tight" condition. Final tightening shall be in accordance with section 506J9.
5. For Details of Bridge Railing NETC - 2 Rail, see Shts. BR17-BR19.
6. For Details of drip notch & scoring at fascia, see sheet BR15.
7. For Haunch Detail, see sheet BR413.
8. For Bridge End Details, see Sheets BR419 and BR422.
9. All intermediate cross frames, pier diaphragms and end diaphragms shall require charpy v-notch testing per AASHTO M270 and supplementary requirements for zone 2.



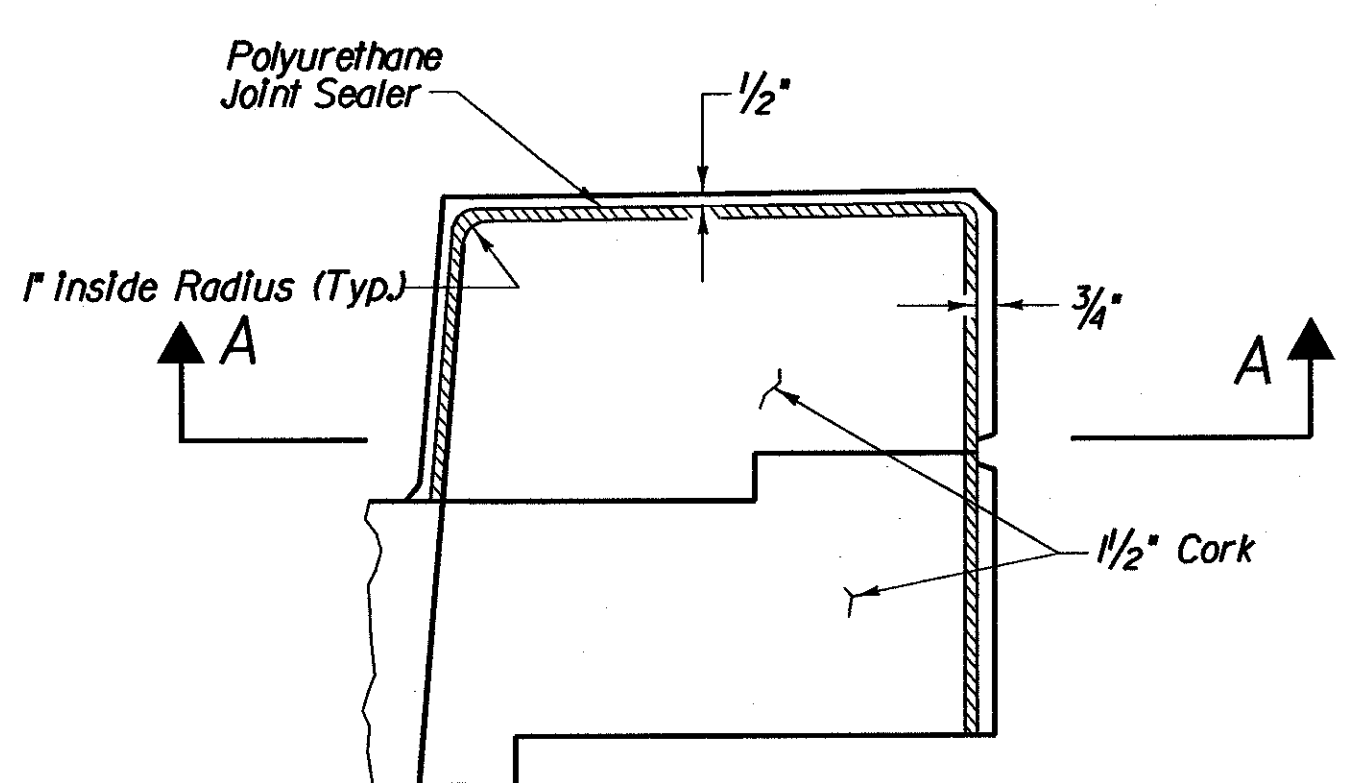
SECTION C-C

SCALE 1 1/2" = 1'-0"
 1 9 6 3 0



DETAIL A (TYP.)
WELD TERMINATION & COPING DETAIL
 (NOT TO SCALE)

** No weld for 1/4" min. & 1/2" max.
 *** Maintain 1" min. from edge of flange



SECTION B-B

SCALE 1 1/2" = 1'-0"
 1 9 6 3 0

FILE NAME = A:\STEVENS\15.BR0025B\25b.dwg
 DATE/TIME = 02/28/02
 USER = 2225

PLOT SCALE= 1:2

McFARLAND - JOHNSON ENGINEERS, INC.

STATE OF VERMONT AGENCY OF TRANSPORTATION	
Town Of SEARSBURG	Bridge No. 25B
Highway No. VT. ROUTE 9	Log Sta. 143+11
VT. ROUTE 9 OVER DEERFIELD RIVER	
TYPICAL SECTION	
Designed By R.P.J.	Drawn By M.J.R./D.R.D.
Checked By J.J.M. Date 12-85	Bridge Design Supervisor
T.L.G. 10-99	W.T.S. Date
PROJECT SEARSBURG-WILMINGTON	PROJECT NO. FO10-118
I.G.C. Info.	
Bridge Sheet No. BR404	Sheet 206 of 435