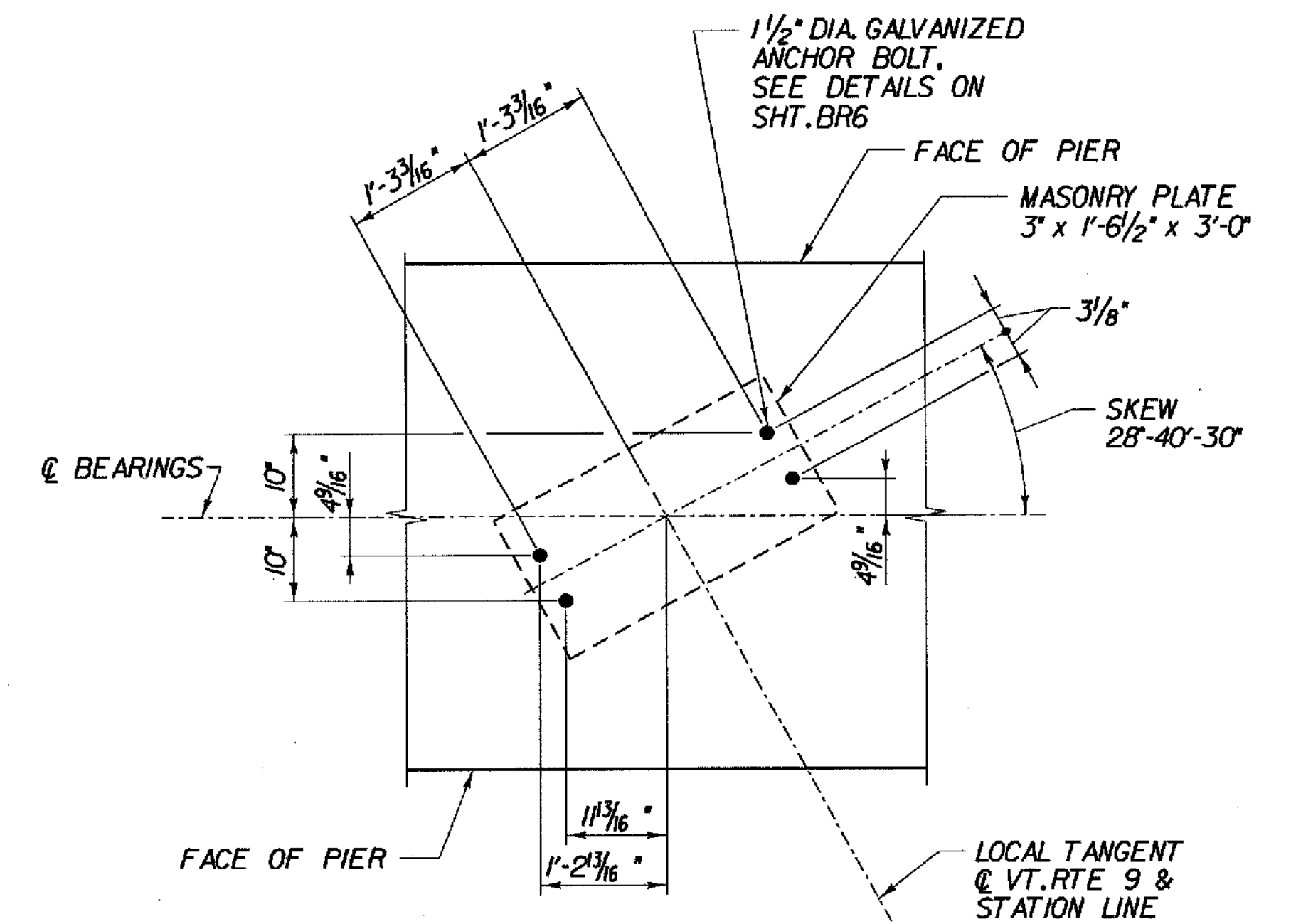


PIER I PLAN - BR 25A

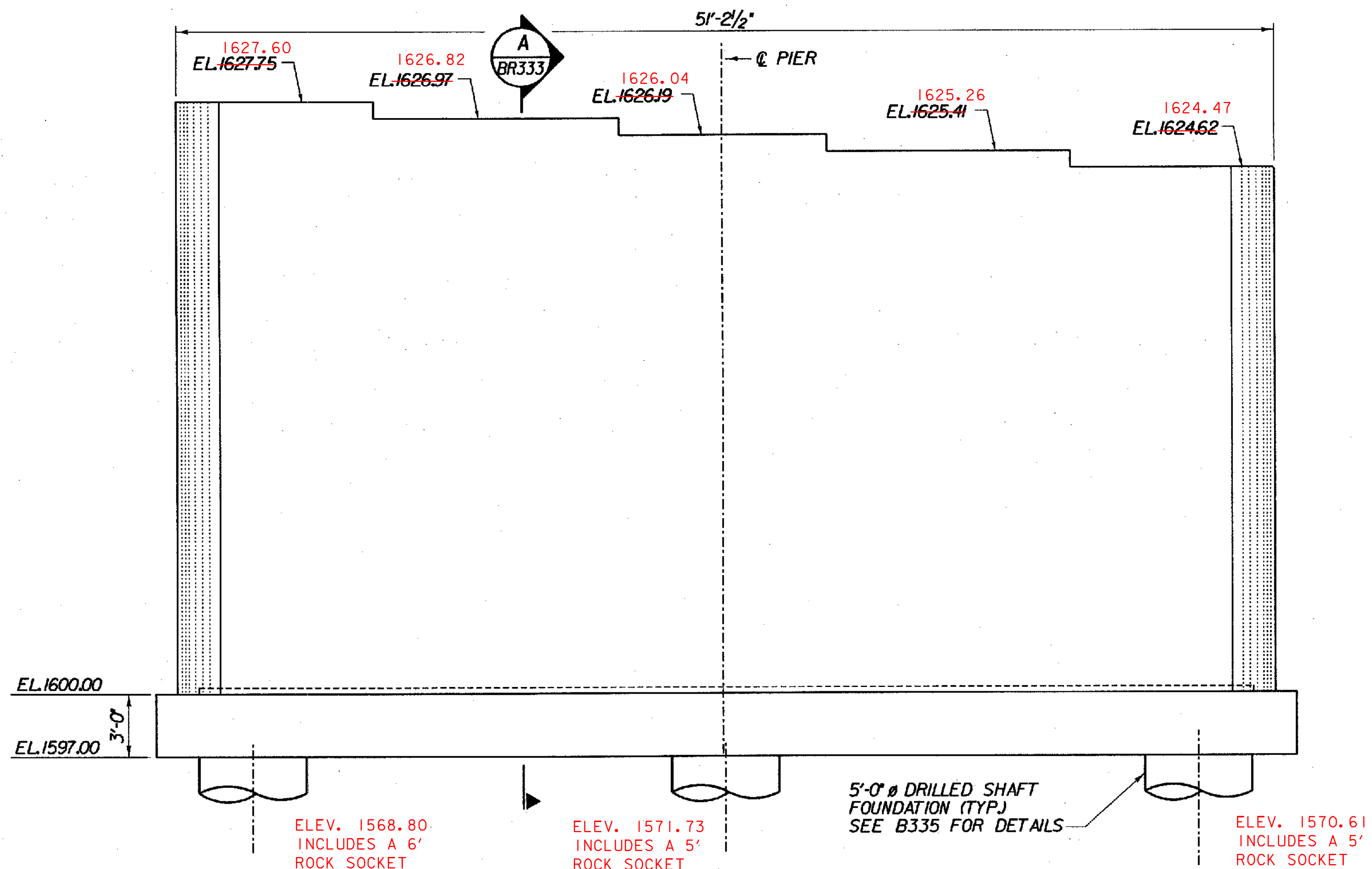
SCALE 1/4" = 1'-0"
1 0 2 4 6

SHAFT OFFSET BY CONTRACTOR.
IMPACT ON DESIGN REVIEWED BY
STRUCTURES AND APPROVED.



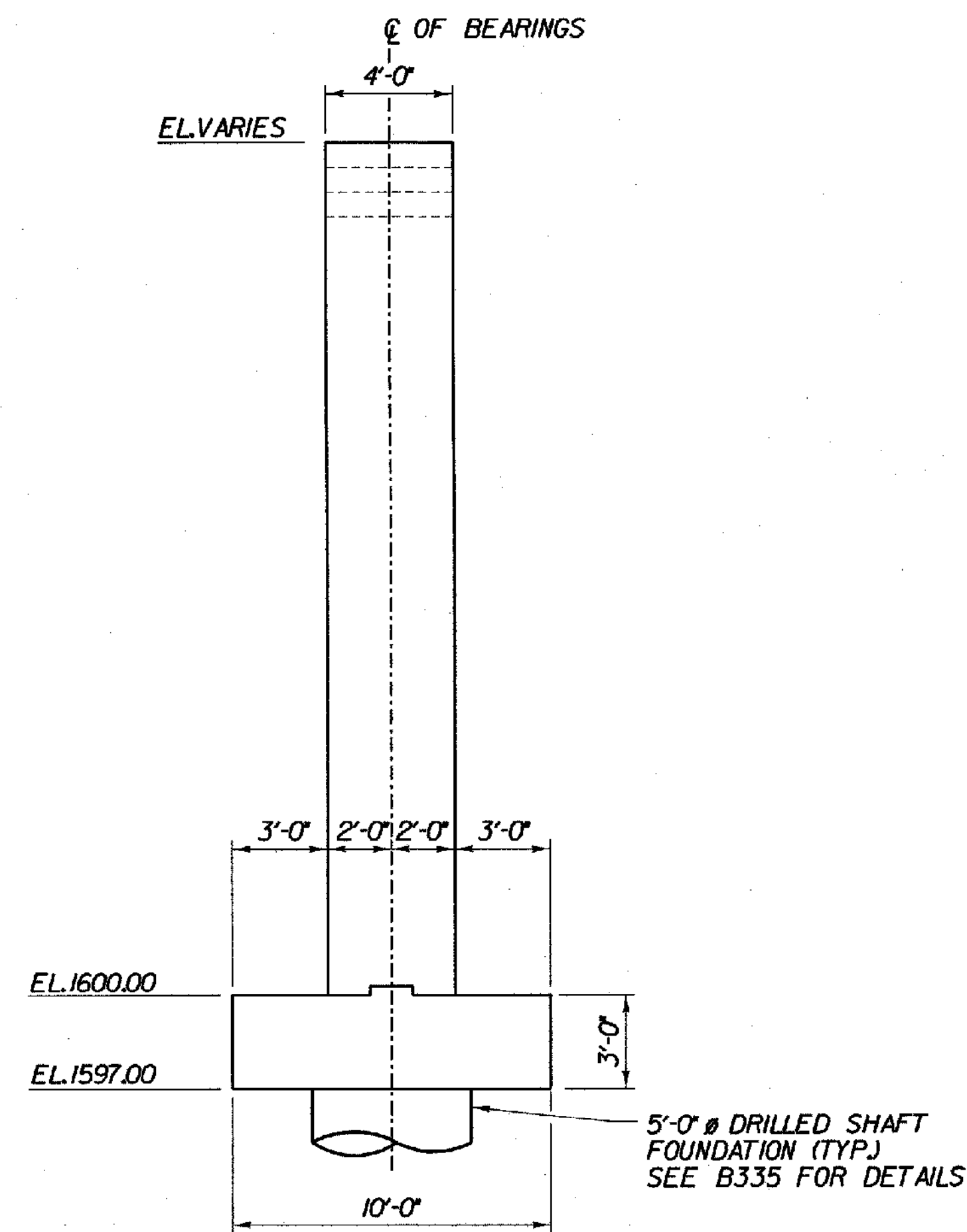
PIER I ANCHOR BOLT LAYOUT PLAN

SCALE 3/4" = 1'-0"
1 0 2



PIER I ELEVATION - BR 25A

SCALE 1/4" = 1'-0"
1 0 2 4 6



A PIER I SECTION

SCALE 1/4" = 1'-0"
1 0 2 4 6

NOTES:

1. ANCHOR BOLTS SHALL CLEAR ALL REINFORCING
STEEL IN THE PIER CAP.

STATE OF VERMONT
AGENCY OF TRANSPORTATION

| | | | |
|----------------------------------|------------------------|--------------------------|-------------|
| Town Of | SEARSBURG | Bridge No. | 25A |
| Highway No. | VT. RTE. 9 | Log Sta. | |
| | | Surv. Sta. | |
| VT. RTE. 9 OVER DEERFIELD RIVER | | | |
| PIER I PLAN & ELEVATION - BR 25A | | | |
| Designed By | D. VIENI | Drawn by | K. DETRICK |
| Checked By | M. OLSTAD | Date | 2/2002 |
| | | Bridge Design Supervisor | M. OLSTAD |
| | | Date | 2/2002 |
| PROJECT | SEARSBURG - WILMINGTON | PROJECT NO. | NHF 010-K18 |
| I.G.C. Info. | | Bridge Sheet No. BR333 | |

CHA CLOUGH, HARBOUR & ASSOCIATES LLP
ENGINEERS, SURVEYORS, PLANNERS & LANDSCAPE ARCHITECTS
WINNERS CIRCLE ALBANY, NEW YORK 12205