

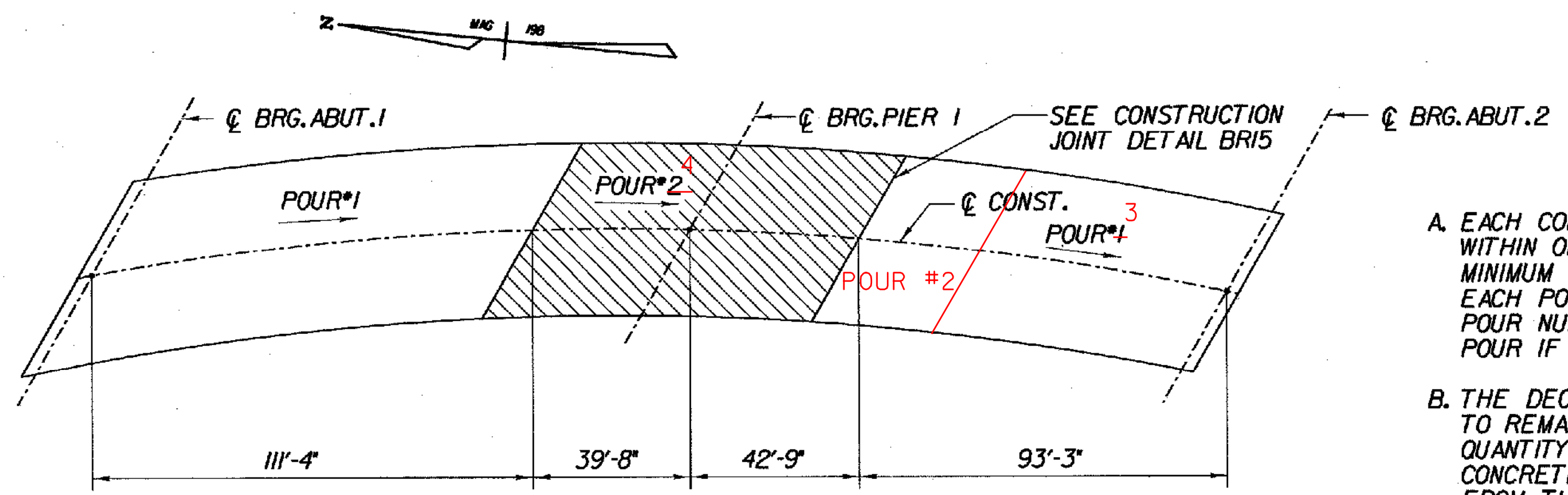
END OF DECK SLAB REINFORCEMENT DETAIL (EXP. END)

SCALE 1 1/2" = 1'-0"



TRANSVERSE SECTION - BR25A

SCALE 1/2" = 1'-0"



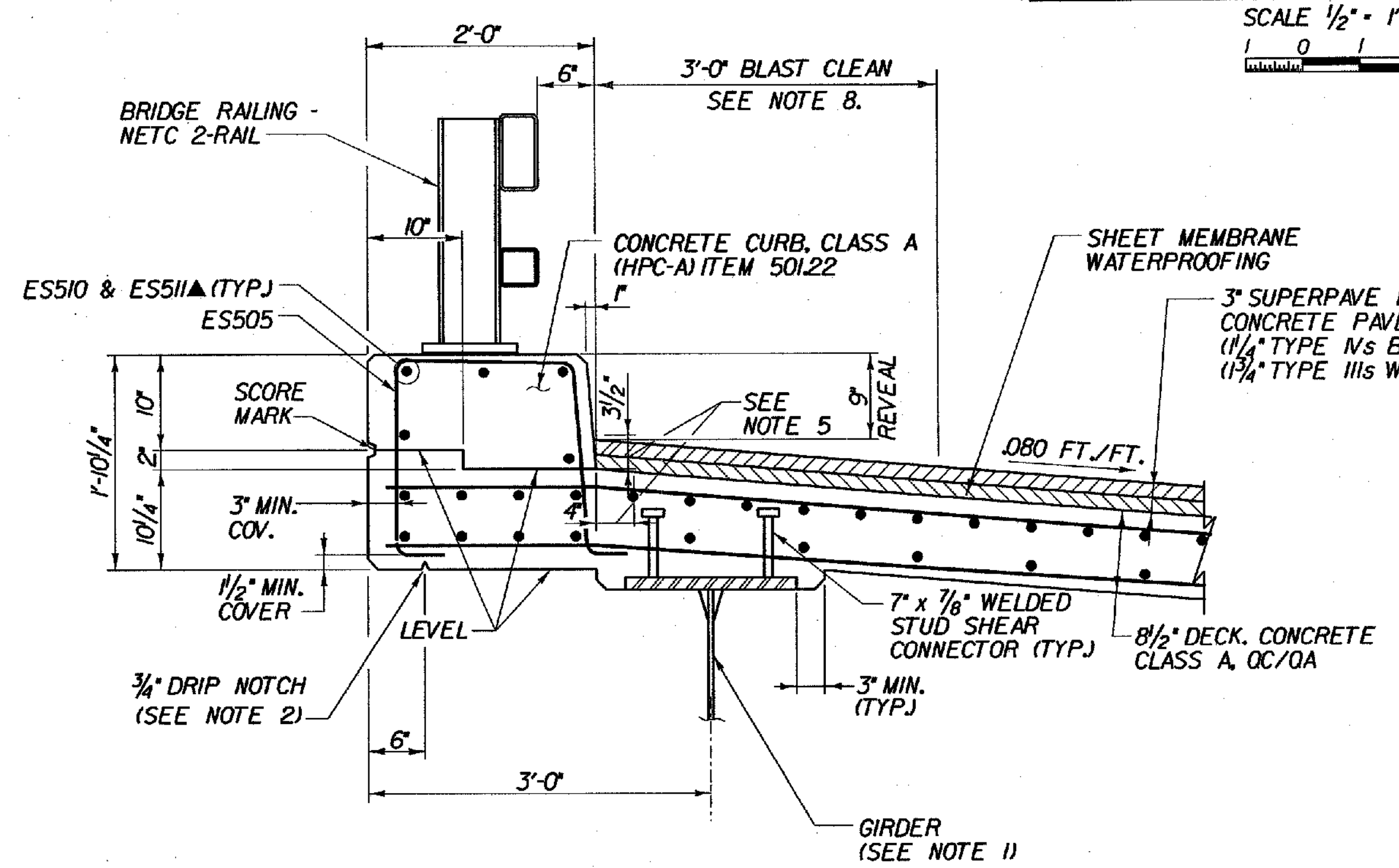
DECK POUR PLAN - BR25A (NOT TO SCALE)

DECK SLAB PLACEMENT NOTES

- A. EACH CONCRETE DECK POUR SHALL BE PLACED CONTINUOUSLY WITHIN ONE EIGHT HOUR WORKING DAY. THERE SHALL BE A MINIMUM DELAY PERIOD OF 96 HOURS AFTER COMPLETION OF EACH POUR BEFORE BEGINNING ANOTHER POUR. INDIVIDUAL POUR NUMBERS AS SHOWN MAY BE COMBINED INTO A SINGLE POUR IF APPROVED BY THE VAOT STRUCTURES ENGINEER.
- B. THE DECK CONCRETE SHALL BE RETARDED SUFFICIENTLY TO REMAIN PLASTIC UNTIL EACH POUR IS COMPLETE. THE QUANTITY OF RETARDANT SHALL BE APPROVED BY THE CONCRETE ENGINEER PRIOR TO PLACEMENT. ANY DEVIATIONS FROM THIS PROCEDURE MUST BE APPROVED BY THE VAOT STRUCTURES ENGINEER IN WRITING BEFORE THE POUR BEGINS.
- C. — = DIRECTION OF POUR

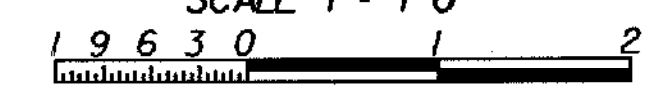
NOTES:

1. FOR GIRDER SIZES SEE GIRDER ELEVATIONS BRIDGE SHEET BR312.
2. END DRIP NOTCH 3'-0" FROM FACE OF ABUTMENT AND OUTLET @ 45° TO FASCIA.
3. FOR DETAILS OF TRANSVERSE REINFORCEMENT, SEE DECK REINFORCEMENT PLANS, BRIDGE SHEETS BR308.
4. FOR DETAILS OF NETC BRIDGE RAIL AND APPROACH SECTION, SEE GUARD RAIL APPROACH SECTION, NETC 2 RAIL BRIDGE SHEETS BR309, BR17, BR18 AND BR19.
5. DIMENSIONS SHOWN INDICATE AREA ALONG DECK AND UP FACE OF CURB FOR PLACEMENT OF 2 COATS OF POLYURETHANE MEMBRANE.
6. POLYURETHANE MEMBRANE AND BLAST CLEANING SHALL BE INCLUDED IN THE UNIT PRICE BID FOR SHEET MEMBRANE WATERPROOFING.
7. SHEET MEMBRANE WATERPROOFING SHALL EXTEND TO FACE OF CURB AS SHOWN IN DETAIL.
8. BLAST CLEAN 3'-0" FROM FACE OF CURB AND 3" UP CURB FACE PRIOR TO PLACING MEMBRANE.
9. THE COST OF 1" DIA. PLASTIC DRAIN TUBE IS SUBSIDIARY TO ITEM 501221. CONCRETE, CLASS A, 0A/0C. CARE SHALL BE TAKEN TO KEEP TUBE CLEAR DURING CONSTRUCTION. DRAIN TUBE SHALL CONFORM TO SUBSECTION 740.01.



FASCIA DETAIL - BR 25A

SCALE 1" = 1'-0"



STATE OF VERMONT AGENCY OF TRANSPORTATION

Town Of	SEARSBURG	Bridge No.	25A
Highway No.	VT. RTE. 9	Log Sta.	
		Surv. Sta.	
VT. RTE. 9 OVER DEERFIELD RIVER			
TRANSVERSE SECTION - BR 25A			
Designed By	D. VIENI	Drawn by	K. DETRICK
Checked By	M. OLSTAD	Bridge Design Supervisor	M. OLSTAD
Date	2/2002	Date	2/2002
PROJECT	SEARSBURG - WILMINGTON	PROJECT NO.	NHF 010-10B)
I.G.C. Info.			
Bridge Sheet No. BR307		Sheet 171 of 435	

CHA CLOUGH, HARBOUR & ASSOCIATES LLP
ENGINEERS, SURVEYORS, PLANNERS & LANDSCAPE ARCHITECTS
WINNERS CIRCLE ALBANY, NEW YORK 02203

FILE NAME = \\s19755\hst\m\15\BRD025A\25a_tsect.dgn
DATE / TIME = 02/28/02
USER = zzz