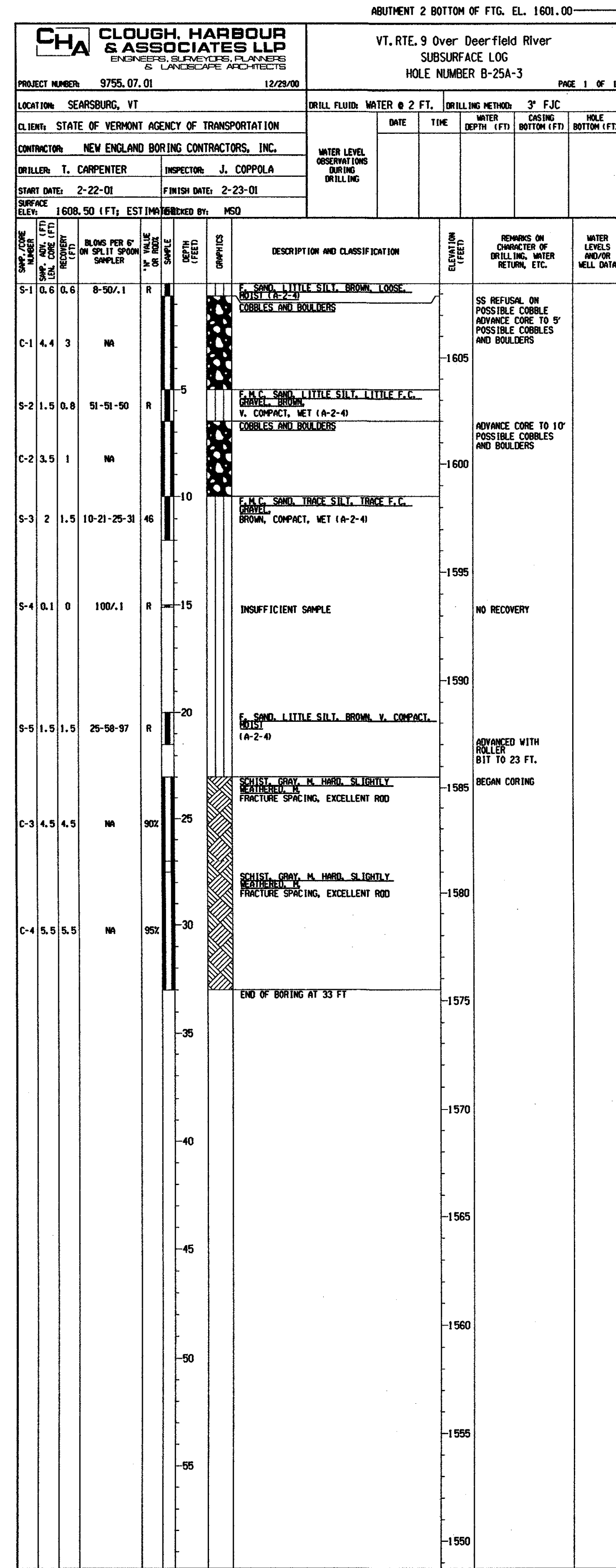
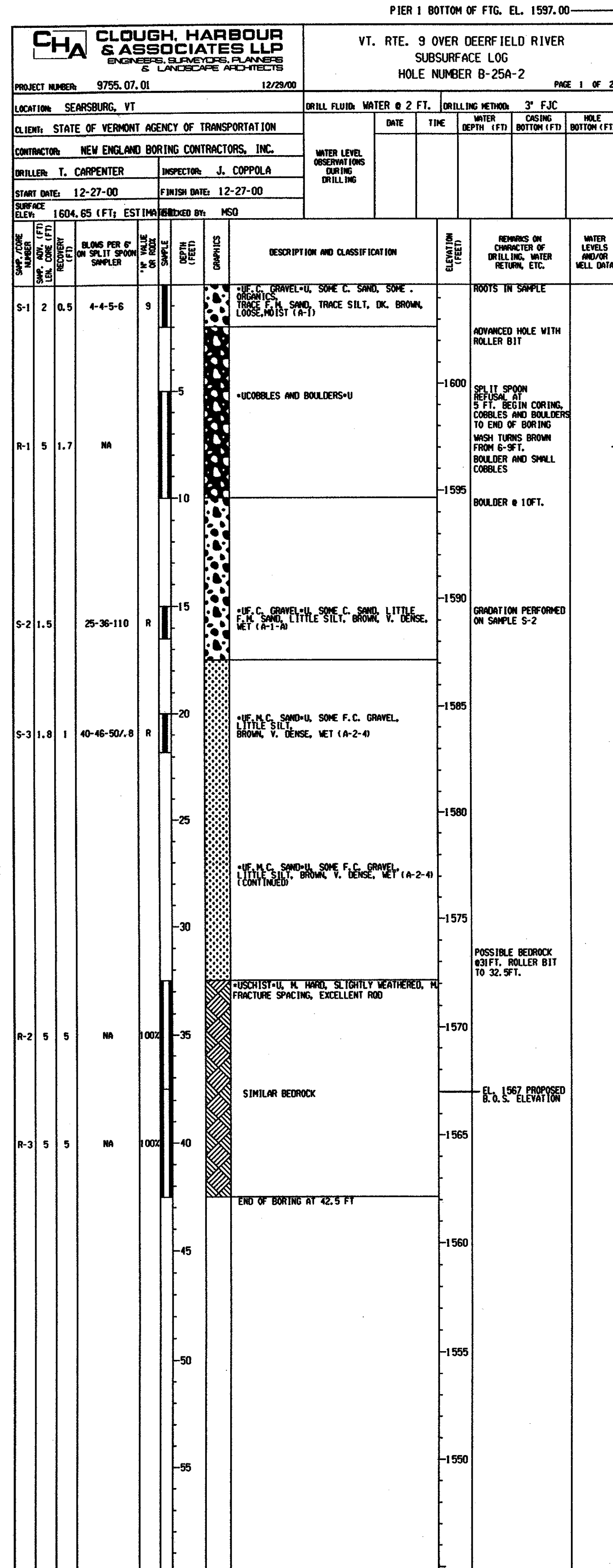
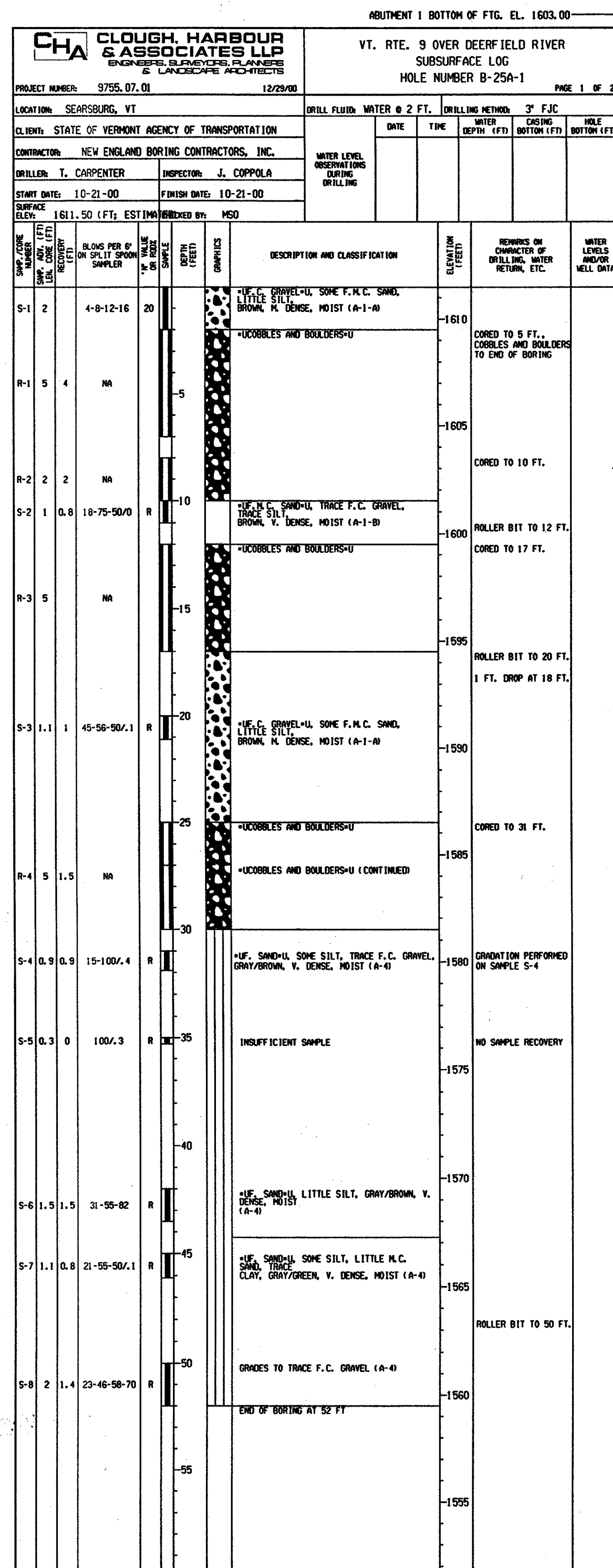


FILE NAME: \\s1755\mst\15\BR025A\25a-bore-log.plt
 DATE: 12/17/01
 USER: 2225



STATE OF VERMONT AGENCY OF TRANSPORTATION		
Town Of	SEARSBURG	Bridge No. 25A
Highway No.	VT. RTE. 9	Log Sta.
VT. RTE. 9 OVER DEERFIELD RIVER		
BORING LOGS - BR 25A		
Designed By	M. QUINN	Drawn by J. FORTE
Checked By	M. QUINN Date 12/2001	Bridge Design Supervisor M. OLSTAD Date 12/2001
PROJECT	SEARSBURG - WILMINGTON	PROJECT NO. NHF 010-1081
L.C. Info.		
Bridge Sheet No. BR305	Sheet 170 of 435	

