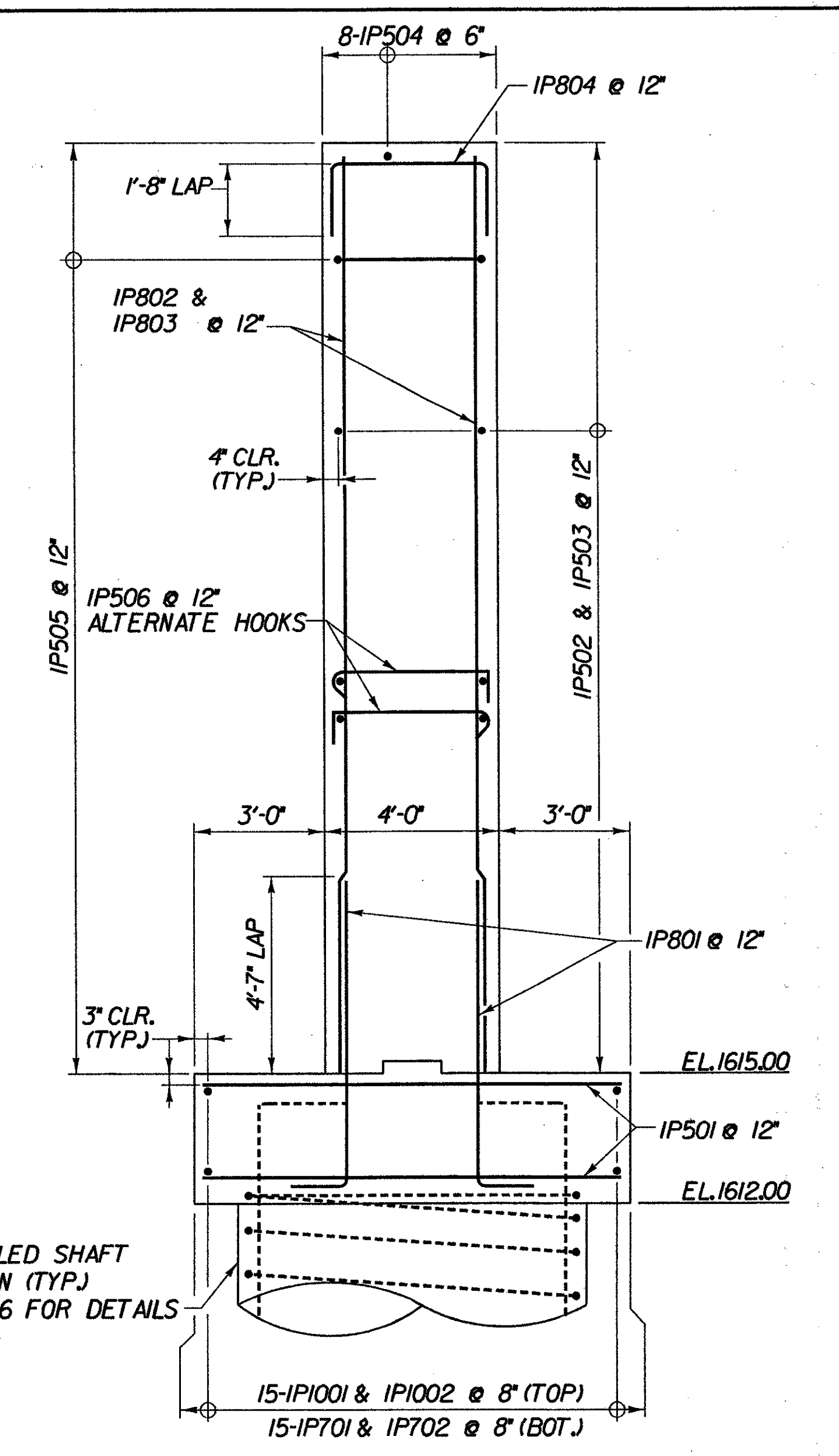


PIER 1 REINFORCEMENT PLAN - BR 25

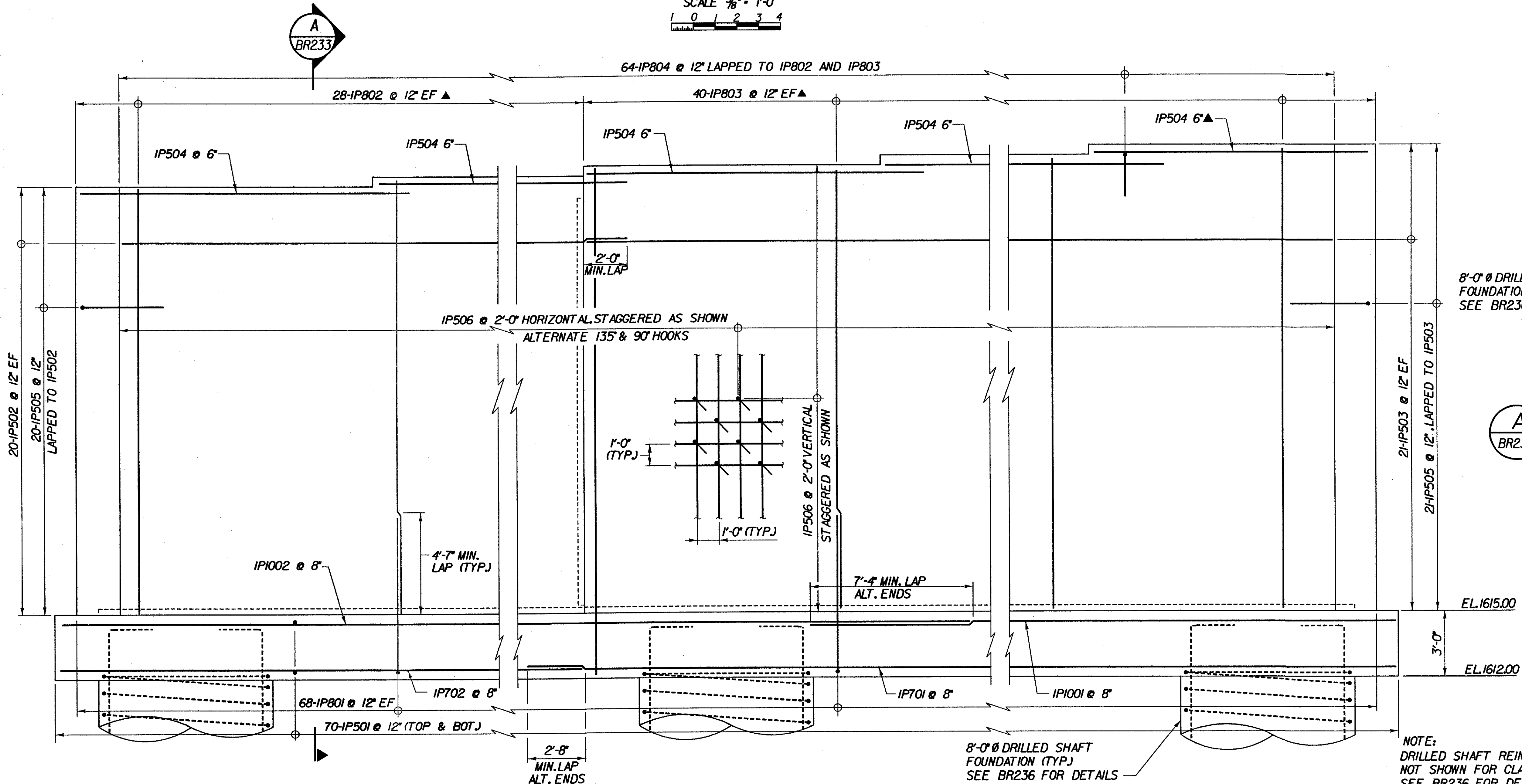
SCALE 3/8" = 1'-0"
0 1 2 3 4



PIER 1 REINFORCEMENT SECTION

SCALE 3/8" = 1'-0"
0 1 2 3 4

KEY:
 NF - NEAR FACE
 FF - FAR FACE
 EF - EACH FACE
 ▲ - CUT TO FIT IN FIELD
 3" CLR. FOR FOOTINGS, 4" CLR. FOR PIER STEM & DRILLED SHAFTS UNLESS OTHERWISE SPECIFIED ON THE PLANS.



PIER 1 REINFORCEMENT ELEVATION - BR 25

SCALE 3/8" = 1'-0"
0 1 2 3 4

NOTE:
 DRILLED SHAFT REINFORCING NOT SHOWN FOR CLARITY. SEE BR236 FOR DETAILS

STATE OF VERMONT AGENCY OF TRANSPORTATION			
Town of	SEARSBURG	Bridge No.	25
Highway No.	VT. RTE. 9	Log Sta.	
VT. RTE. 9 OVER DEERFIELD RIVER			
PIER 1 REINFORCING - BR 25			
Designed By	D. VIENI	Drawn by	K. DETRICK/WmWEATHERBY
Checked By	M. OLSTAD	Bridge Design Supervisor	M. OLSTAD
PROJECT	SEARSBURG - WILMINGTON	PROJECT NO.	NHF 010-K18)
I.G.C. Info.		Bridge Sheet No. BR233	

CHA CLOUGH, HARBOUR & ASSOCIATES LLP
 ENGINEERS, SURVEYORS, PLANNERS & LANDSCAPE ARCHITECTS
 11 WINNERS CIRCLE ALBANY, NEW YORK, 12205

FILE NAME: H:\9755\MAIN\15\BRIDGE\25.pier1reinforc.plt
 DATE/TIME: 12/12/2001
 USER: 664