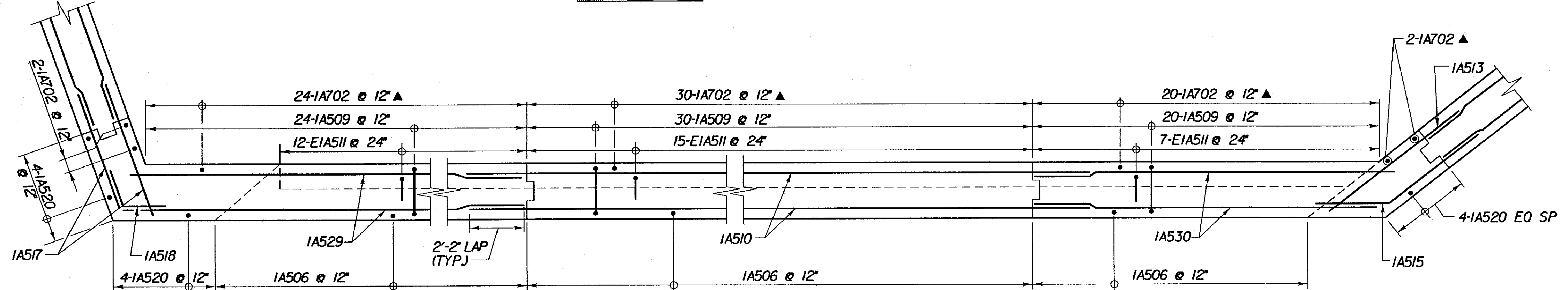
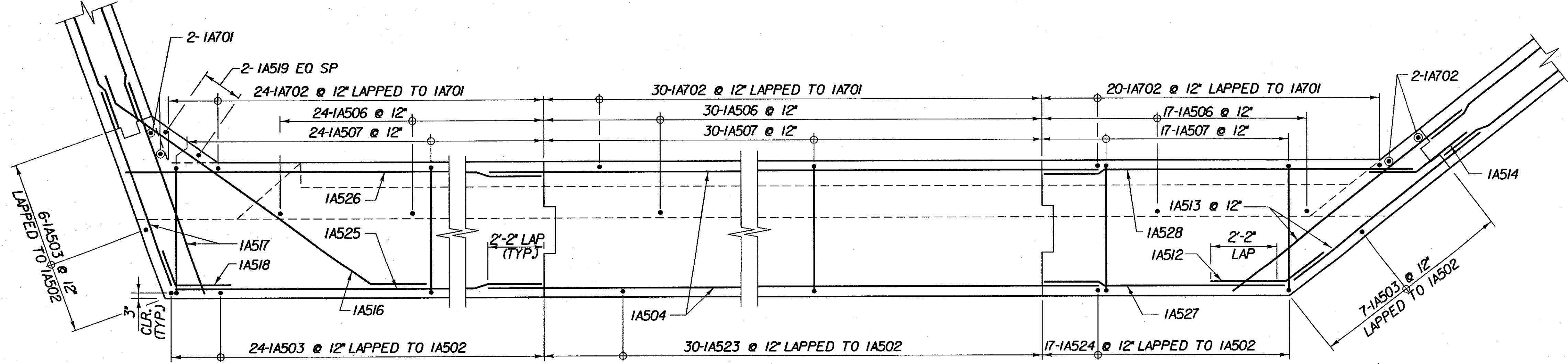


B TOP OF BACKWALL REINFORCING PLAN - BR 25
BR224 SCALE 3/8" = 1'-0"
1 0 1 2 3 4



C BACKWALL REINFORCING PLAN - BR 25
BR224 SCALE 3/8" = 1'-0"
1 0 1 2 3 4



D STEM REINFORCING PLAN - BR 25
BR224 SCALE 3/8" = 1'-0"
1 0 1 2 3 4

KEY:
NF - NEAR FACE
FF - FAR FACE
EF - EACH FACE
▲ - CUT TO FIT IN FIELD
3' CLR. UNLESS OTHERWISE SPECIFIED ON THE PLANS.

FILE NAME: \\S:\15758\15758\15758\BR225\25_06101412.DGN
DATE/TIME: 02/28/02
USER: 2225

**STATE OF VERMONT
AGENCY OF TRANSPORTATION**

Town Of	SEARSBURG	Bridge No.	25
Highway No.	VT. RTE. 9	Log Sta.	
		Surv. Sta.	
VT. RTE. 9 OVER DEERFIELD RIVER			
ABUTMENT 1 REINFORCING - BR 25			
Designed By	D. VIENI	Drawn by	Wm WEATHRY/J. LAGONE
Checked By	M. OLSTAD	Bridge Design Supervisor	M. OLSTAD
Date	2/2002	Date	2/2002
PROJECT	SEARSBURG - WILMINGTON	PROJECT NO.	NHF 010-1181
I.G.C. info.			
Bridge Sheet No.	BR223	Sheet	149 of 435

CHA CLOUGH, HARBOUR & ASSOCIATES LLP
ENGINEERS, SURVEYORS, PLANNERS & LANDSCAPE ARCHITECTS
11 WINNERS CIRCLE ALBANY, NEW YORK, 12205