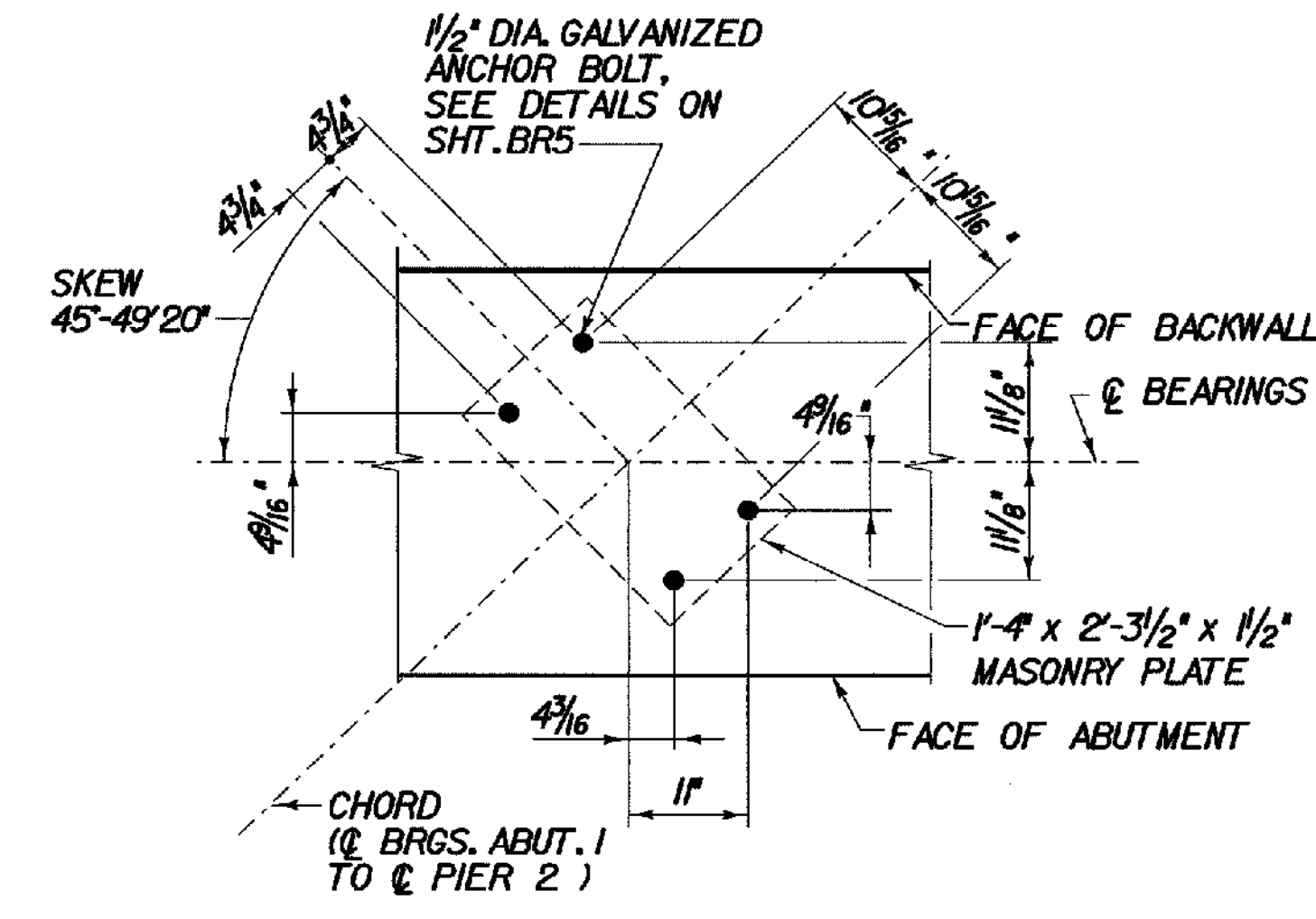
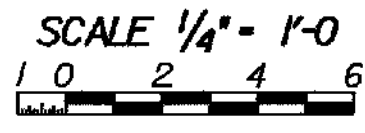
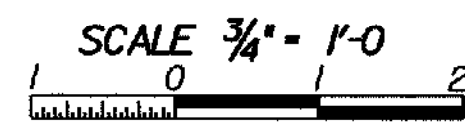


**ABUTMENT I PLAN - BR 25**



**PLAN-ANCHOR BOLT LAYOUT-ABUTMENT I**



- NOTE:**
1. FOR BEARING DETAIL SEE BRIDGE SHEET BR5 AND BR7.
  2. FOR CONSTRUCTION JOINT DETAIL SEE BRIDGE SHEET BR15.

**STATE OF VERMONT  
AGENCY OF TRANSPORTATION**

Town Of	SEARSBURG	Bridge No. 25
Highway No.	VT. RTE. 9	Log Sta.
		Surv. Sta.
VT. RTE. 9 OVER DEERFIELD RIVER		
ABUTMENT I PLAN - BR 25		
Designed By	D. VIENI	Drawn by
		K. DETRICK/Wm WEATHERBY
Checked By	M. OLSTAD	Bridge Design Supervisor
Date	2/2002	Date
		M. OLSTAD
PROJECT	SEARSBURG - WILMINGTON	PROJECT NO.
		NHF 010-1181
L&C. Info.		
Bridge Sheet No. BR220		Sheet 146 OF 435

