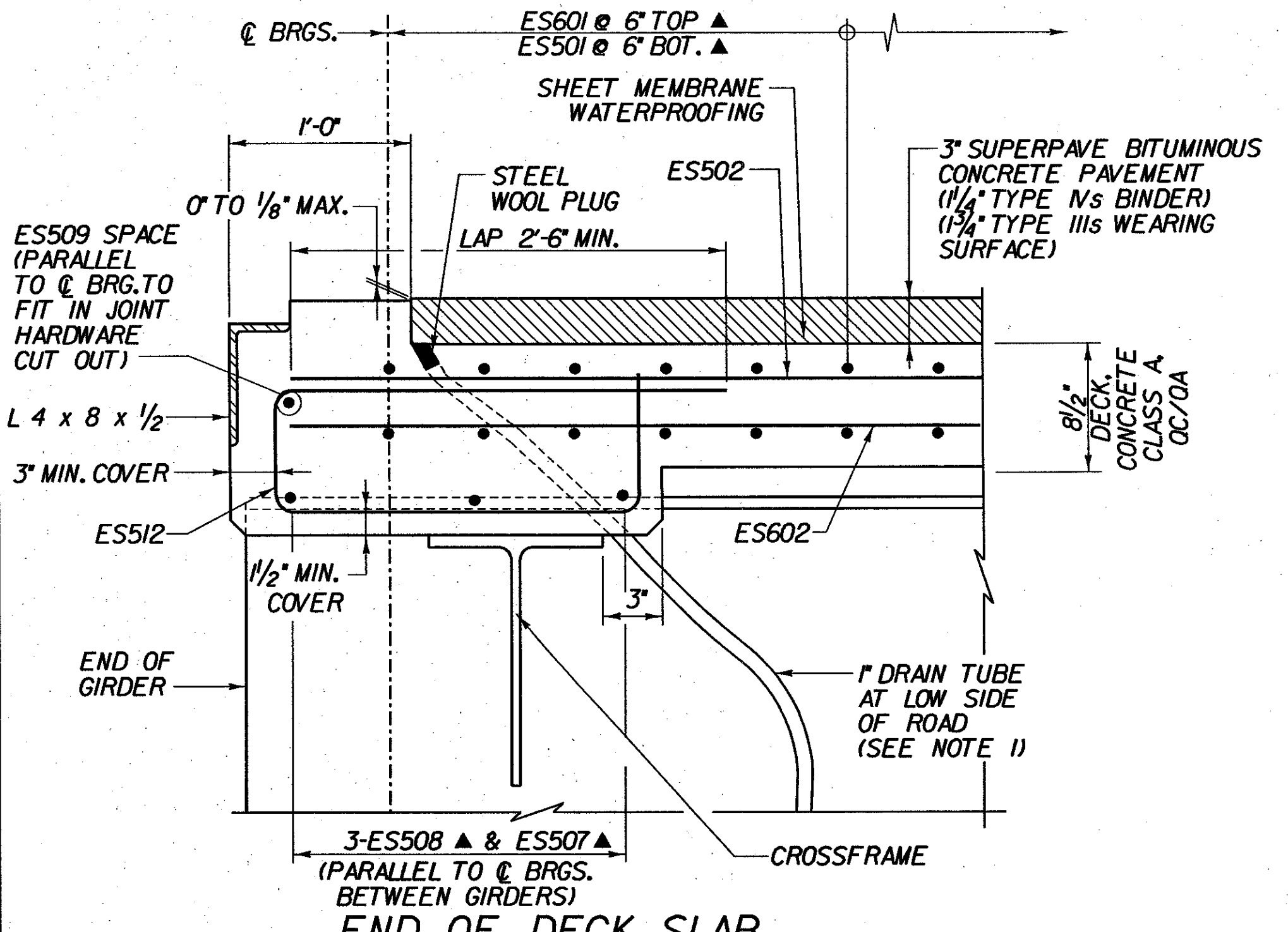


DECK REINFORCEMENT PLAN - BR 25

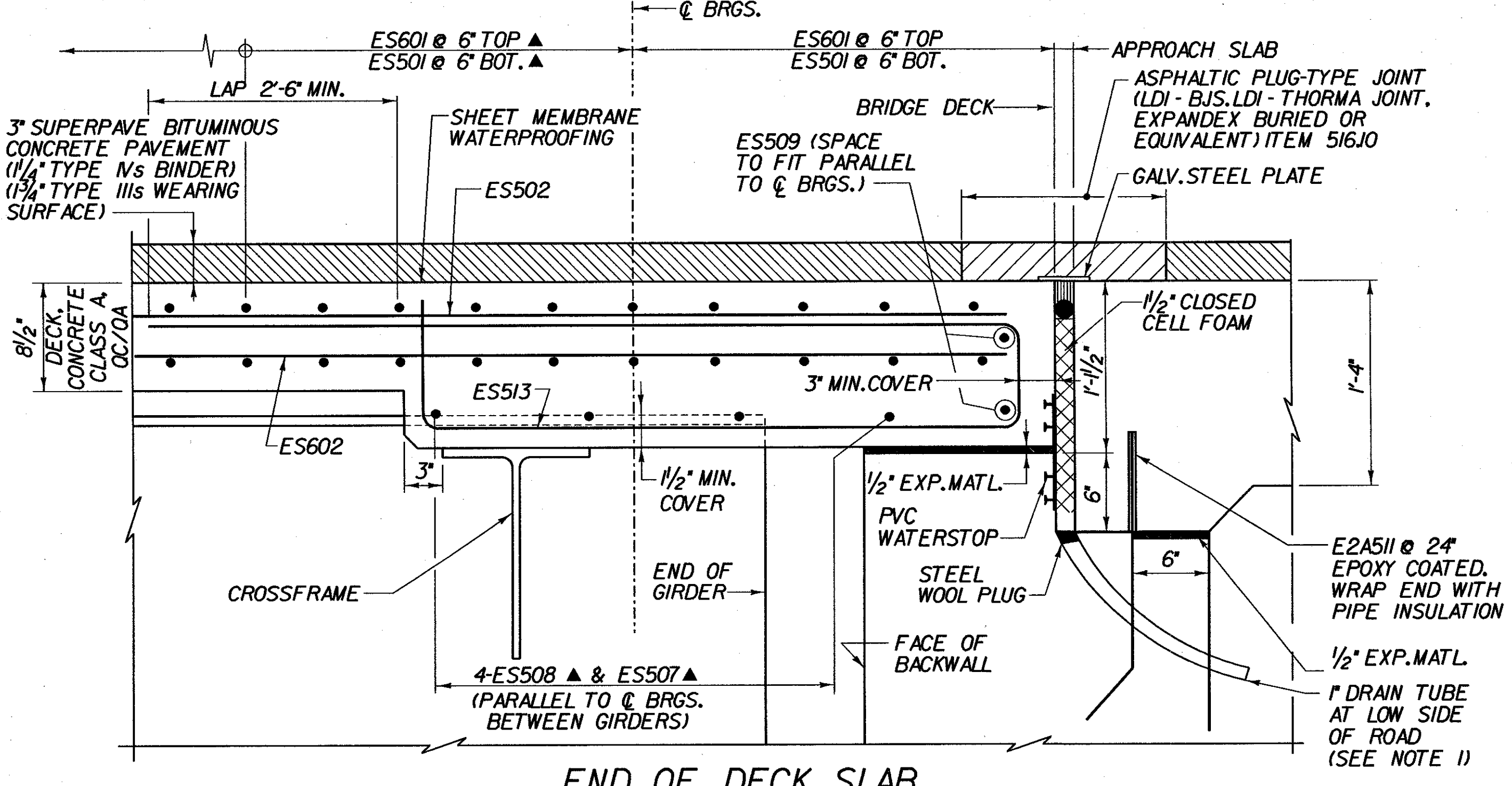
SCALE 1/32" = 1'-0"
1 0 4 8 12 16

REFER TO FASCIA DETAIL ON BR207 FOR ADDITIONAL LONGITUDINAL REINFORCEMENT IN OVERHANG AREAS



END OF DECK SLAB REINFORCEMENT DETAIL - ABUT. 1 (EXP. END)

SCALE 1/2" = 1'-0"
0 3 6 9 1



END OF DECK SLAB REINFORCEMENT DETAIL - ABUT. 2 (EXP. END)

SCALE 1/2" = 1'-0"
1 9 6 3 0

NOTE:
1. THE COST OF 1" DIA. PLASTIC DRAIN TUBE IS SUBSIDIARY TO ITEM 501.221 CONCRETE, CLASS A OC/OA. CARE SHALL BE TAKEN TO KEEP TUBE CLEAR DURING CONSTRUCTION. DRAIN TUBE SHALL CONFORM TO SUBSECTION 740.01.

KEY:
▲ - CUT TO FIT IN FIELD
3" CLR. UNLESS OTHERWISE SPECIFIED ON THE PLANS.

FILE NAME: \\S:\7955\MTN\US\BR025\25.dwg, ref: p1.dwg
DATE: 2/22/02 USER: 2226

STATE OF VERMONT AGENCY OF TRANSPORTATION			
Town of	SEARSBURG	Bridge No.	25
Highway No.	VT. RTE. 9	Log Sta.	
		Surv. Sta.	
VT. RTE. 9 OVER DEERFIELD RIVER			
DECK REINFORCEMENT PLAN - BR 25			
Designed By	D. VIENI	Drawn by	K. DETRICK/Wm WEATHERBY
Checked By	M. OLSTAD	Date	2/2002
		Bridge Design Supervisor	M. OLSTAD
		Date	2/2002
PROJECT	SEARSBURG - WILMINGTON	PROJECT NO.	NHF 010-1118
I.G.C. Info.			
Bridge Sheet No. BR208		Sheet 134 of 435	

