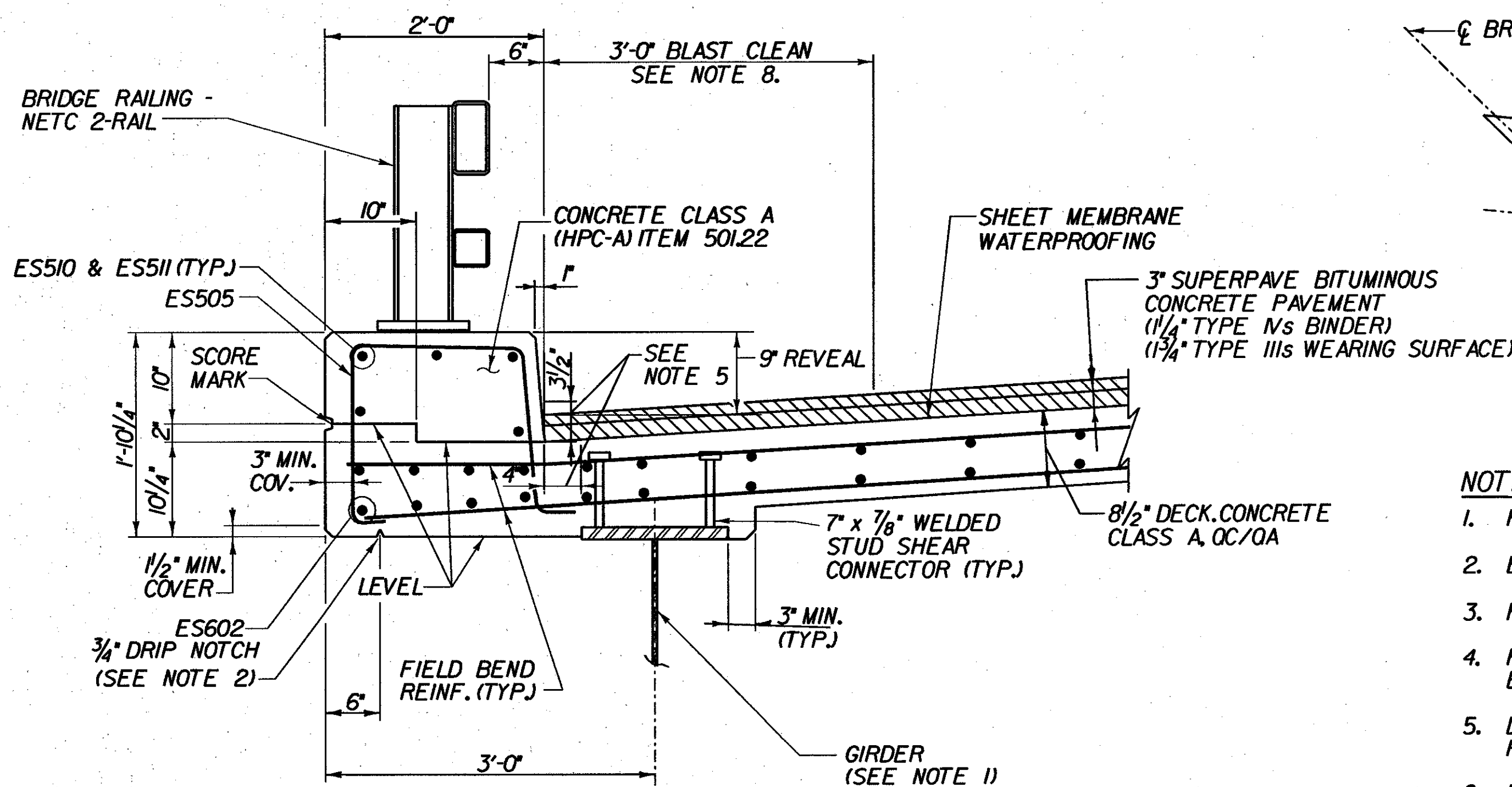
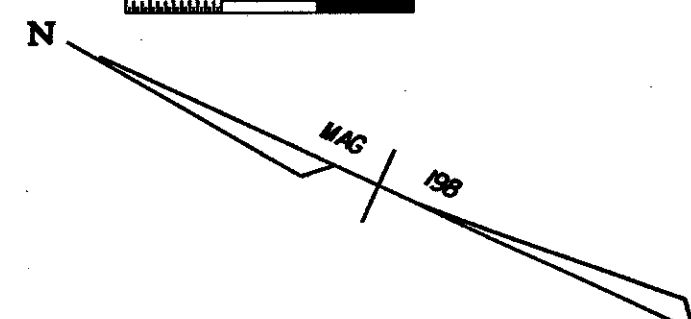


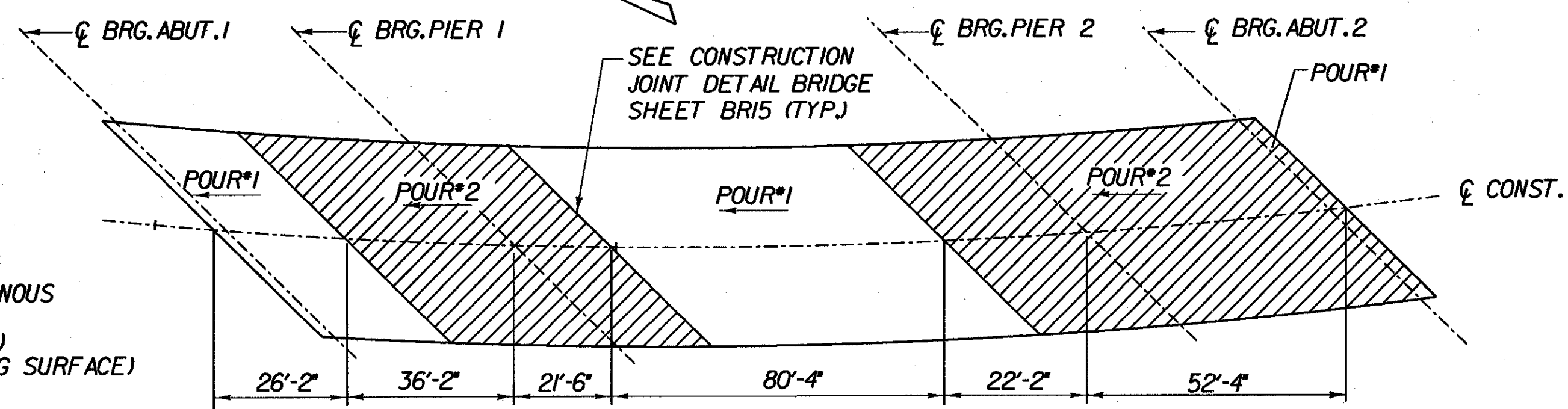
TRANSVERSE SECTION - BR 25

SCALE 1/2" = 1'-0"



FASCIA DETAIL - BR 25

SCALE 1" = 1'-0"



DECK POUR SEQUENCE - BR 25

NOTES:

1. FOR GIRDER SIZES SEE GIRDER ELEVATIONS BRIDGE SHEET BR212.
2. END DRIP NOTCH 3'-0" FROM FACE OF ABUTMENT AND OUTLET @ 45° TO FASCIA.
3. FOR DETAILS OF TRANSVERSE REINFORCEMENT, SEE DECK REINFORCEMENT PLANS, BRIDGE SHEETS BR208.
4. FOR DETAILS OF NETC BRIDGE RAIL AND APPROACH SECTION, SEE GUARD RAIL APPROACH SECTION, NETC 2 RAIL, BRIDGE SHEETS BR208, BR209, BR17, BR18 AND BR19.
5. DIMENSIONS SHOWN INDICATE AREA ALONG DECK AND UP FACE OF CURB FOR PLACEMENT OF 2 COATS OF POLYURETHANE MEMBRANE.
6. POLYURETHANE MEMBRANE AND BLAST CLEANING SHALL BE INCLUDED IN THE UNIT PRICE BID FOR SHEET MEMBRANE WATERPROOFING.
7. SHEET MEMBRANE WATERPROOFING SHALL EXTEND TO FACE OF CURB AS SHOWN IN DETAIL.
8. BLAST CLEAN 3'-0" FROM FACE OF CURB AND 3" UP CURB FACE PRIOR TO PLACING MEMBRANE.

DECK SLAB PLACEMENT NOTES

- A. EACH CONCRETE DECK POUR SHALL BE PLACED CONTINUOUSLY WITHIN ONE EIGHT HOUR WORKING DAY. THERE SHALL BE A MINIMUM DELAY PERIOD OF 96 HOURS AFTER COMPLETION OF EACH POUR BEFORE BEGINNING ANOTHER POUR. INDIVIDUAL POUR NUMBERS AS SHOWN MAY BE COMBINED INTO A SINGLE POUR IF APPROVED BY THE VAOT STRUCTURES ENGINEER.
- B. THE DECK CONCRETE SHALL BE RETARDED SUFFICIENTLY TO REMAIN PLASTIC UNTIL EACH POUR IS COMPLETE. THE QUANTITY OF RETARDANT SHALL BE APPROVED BY THE CONCRETE ENGINEER PRIOR TO PLACEMENT. ANY DEVIATIONS FROM THIS PROCEDURE MUST BE APPROVED BY THE VAOT STRUCTURES ENGINEER IN WRITING BEFORE THE POUR BEGINS.
- C. → = DIRECTION OF POUR

STATE OF VERMONT
AGENCY OF TRANSPORTATION

Town Of	SEARSBURG	Bridge No.	25
Highway No.	VT. RTE. 9	Log Sta.	
		Surv. Sta.	
VT. RTE. 9 OVER DEERFIELD RIVER			
TRANSVERSE SECTION - BR 25			
Designed By	D. VIENI	Drawn by	K. DETRICK
Checked By	M. OLSTAD	Bridge Design Supervisor	M. OLSTAD
	Date 2/2002	Date	2/2002
PROJECT	SEARSBURG - WILMINGTON	PROJECT NO.	NHF 010-1181
I.G.C. Info.		Bridge Sheet No. BR207	