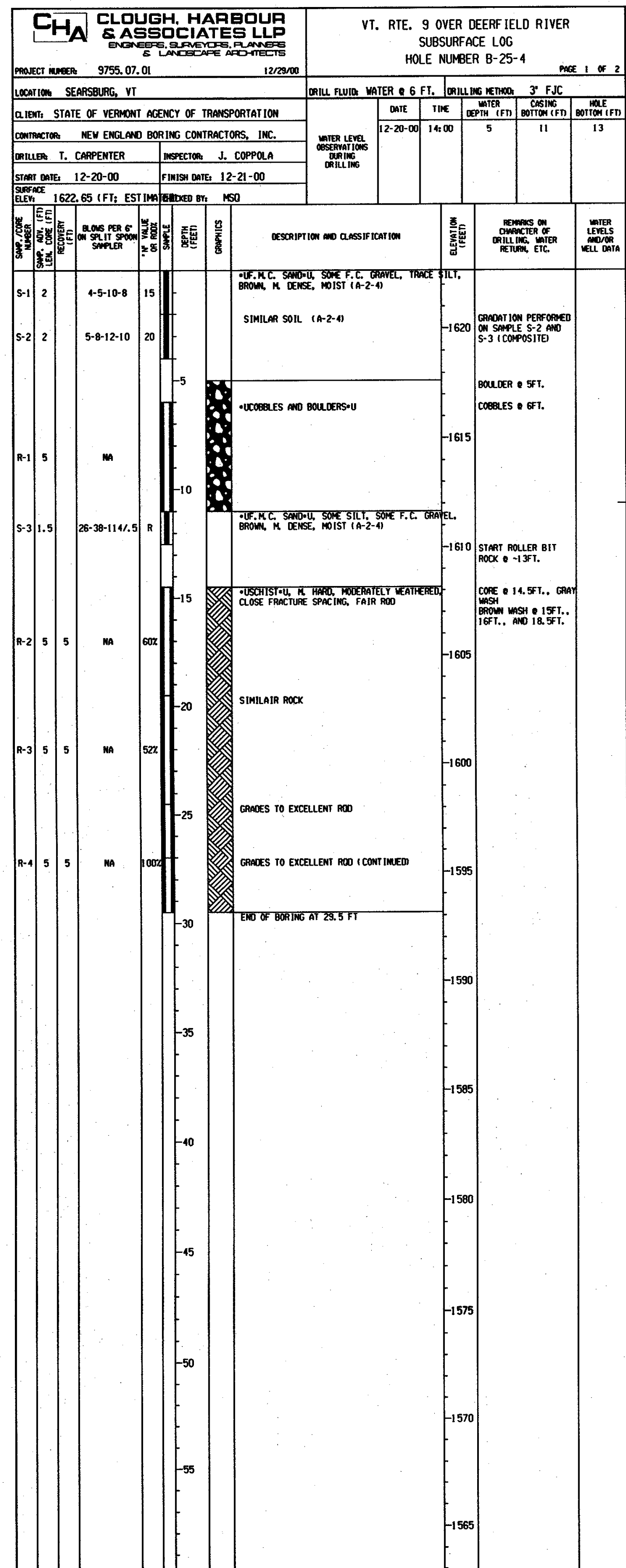
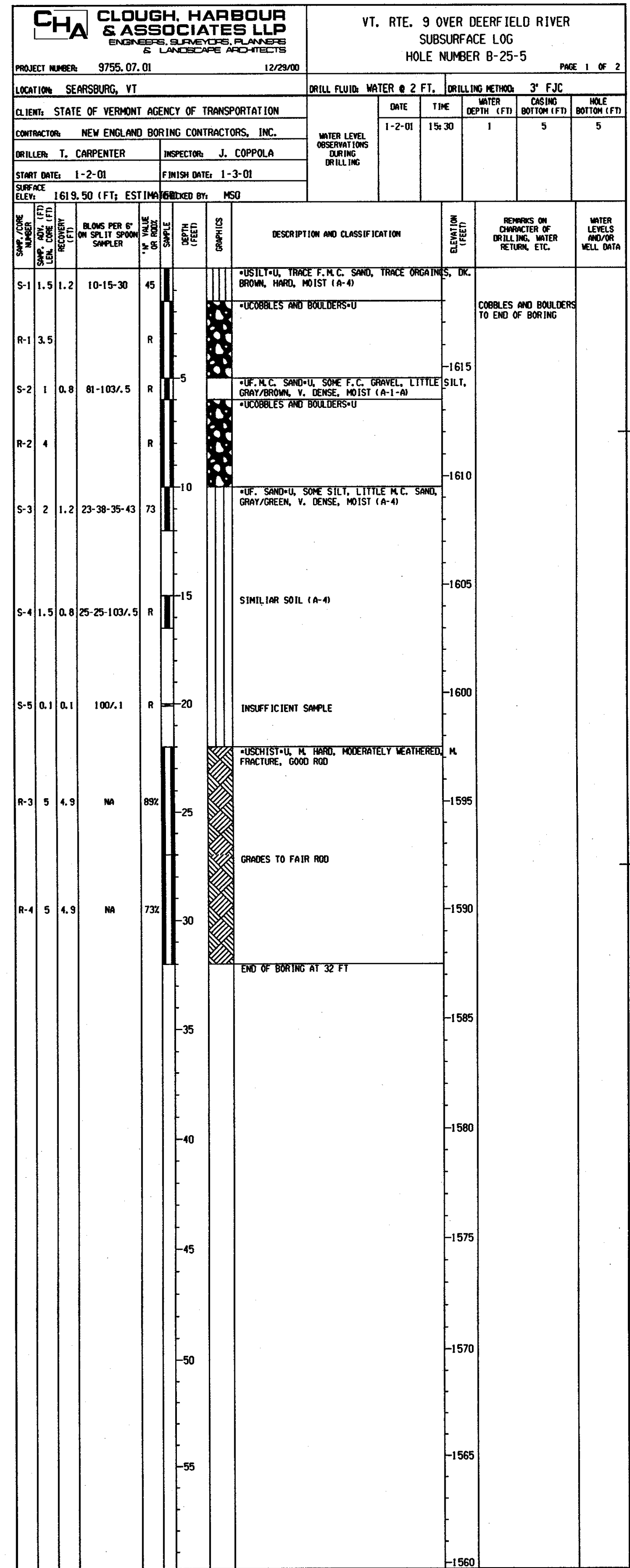


ABUT. 2 BOTTOM OF FIG. EL. 1612.00



PIER 2 BOTTOM OF FIG. EL. 1612.00



BOTTOM OF SHAFT EL. 1592.00 (SHAFT 3)

FILE NAME: \\s1\9755A\MTN\5\BRDGS\25\bor-log2.dwg
DATE/TIME: 02/28/02
USER: j2225

STATE OF VERMONT AGENCY OF TRANSPORTATION

| | | | |
|---------------------------------|------------------------|--------------------------|--------------|
| Town Of | SEARSBURG | Bridge No. | 25 |
| Highway No. | VT. RTE. 9 | Log Sta. | |
| | | Surv. Sta. | |
| VT. RTE. 9 OVER DEERFIELD RIVER | | | |
| BORING LOGS - BR 25 | | | |
| Designed By | M. QUINN | Drawn by | J. FORTE |
| Checked By | M. QUINN | Date | 2/2002 |
| | | Bridge Design Supervisor | M. OLSTAD |
| | | Date | 2/2002 |
| PROJECT | SEARSBURG - WILMINGTON | PROJECT NO. | NHF 010-1081 |
| L.G.C. Info. | | | |
| Bridge Sheet No. BR205A | | Sheet 132 of 435 | |

CH2A CLOUGH, HARBOUR & ASSOCIATES LLP
ENGINEERS, SURVEYORS, PLANNERS & LANDSCAPE ARCHITECTS
11 WINNERS CIRCLE ALBANY, NEW YORK, 12208