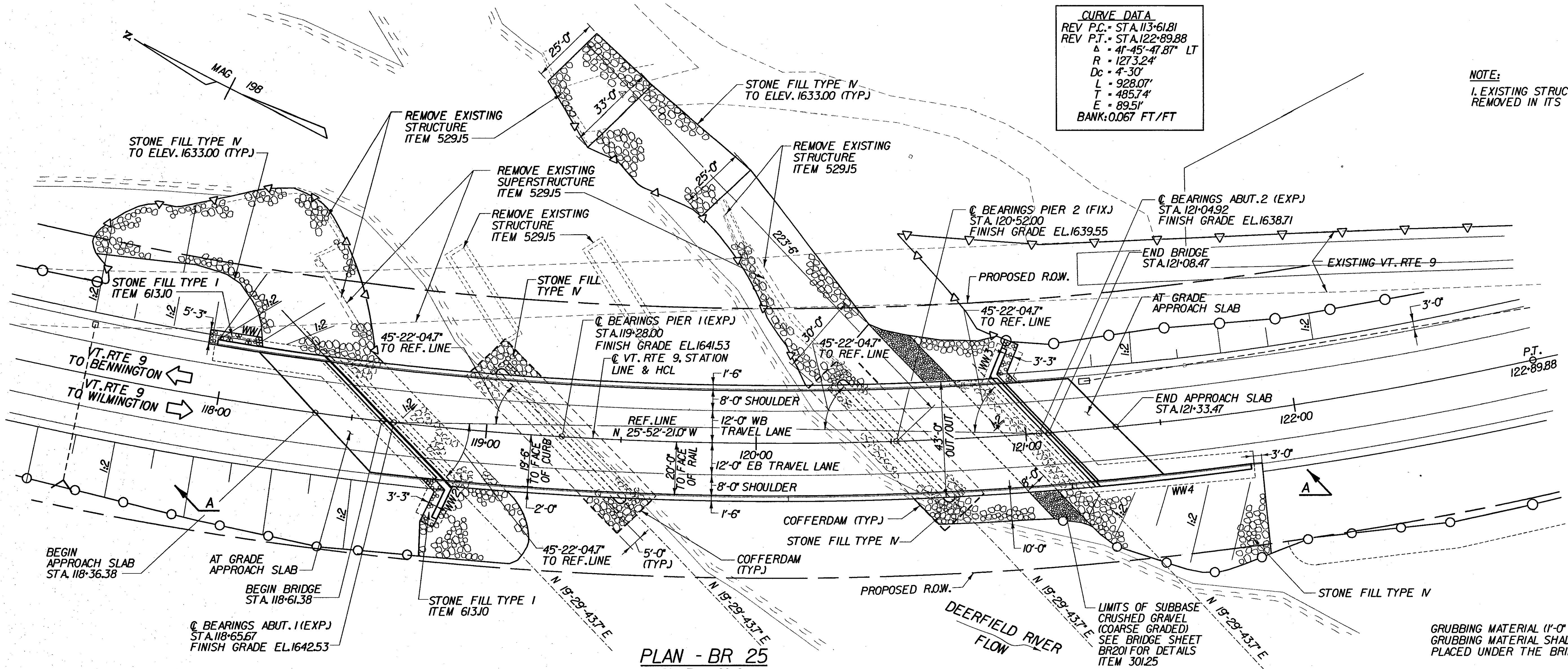
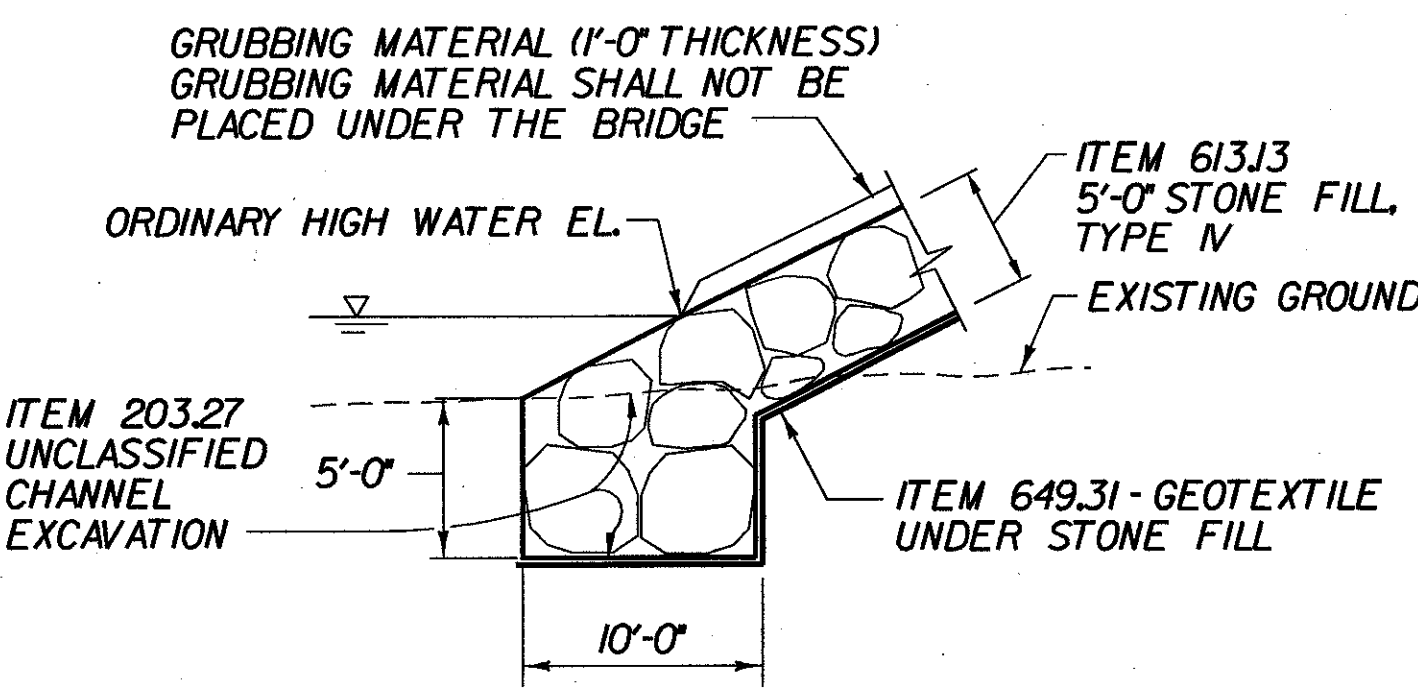


**CURVE DATA**  
 REV P.C. = STA. 113+61.81  
 REV P.T. = STA. 122+89.88  
 Δ = 41°-45'-47.87" LT  
 R = 1273.24'  
 Dc = 4'-30"  
 L = 928.07'  
 T = 485.74'  
 E = 89.51'  
 BANK: 0.067 FT/FT

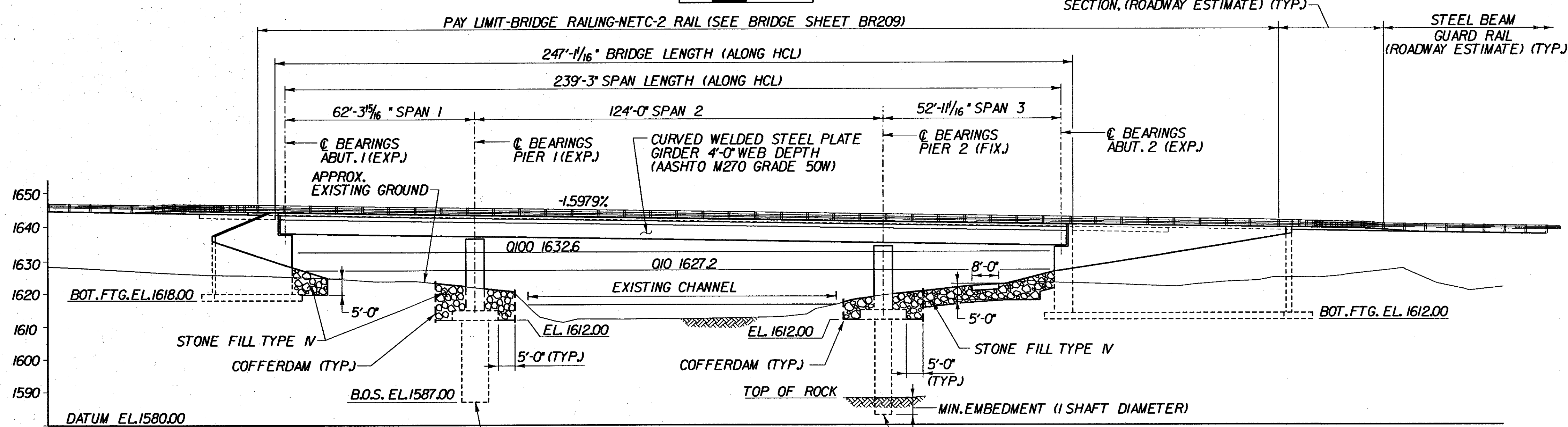
**NOTE:**  
 1. EXISTING STRUCTURE TO BE REMOVED IN ITS ENTIRETY.



**PLAN - BR 25**  
 SCALE 1" = 20'-0"



**TYPICAL EMBANKMENT PROTECTION DETAIL**  
 (NOT TO SCALE)



**ELEVATION A-A - BR 25**  
 SCALE 1" = 20'-0"

<b>STATE OF VERMONT AGENCY OF TRANSPORTATION</b>			
Town of	SEARSBURG	Bridge No.	25
Highway No.	VT. RTE. 9	Log Sta.	
		Surv. Sta.	
<b>VT. RTE. 9 OVER DEERFIELD RIVER</b>			
<b>PLAN AND ELEVATION - BR 25</b>			
Designed By	D. VIENI	Drawn by	K. DETRICK
Checked By	M. OLSTAD	Date	2/2002
		Bridge Design Supervisor	M. OLSTAD
		Date	2/2002
PROJECT	SEARSBURG - WILMINGTON	PROJECT NO.	NHF 010-1181
I.G.C. Info.			
Bridge Sheet No.	BR200	Sheet	126 of 435

**CHA CLOUGH, HARBOUR & ASSOCIATES LLP**  
 ENGINEERS, SURVEYORS, PLANNERS & LANDSCAPE ARCHITECTS  
 110 WINNERS CIRCLE ALBANY, NEW YORK, 12205

FILE NAME: s:\9755\VT\151\BR0225-25.plt  
 DATE/TIME: 02/20/02  
 USER: