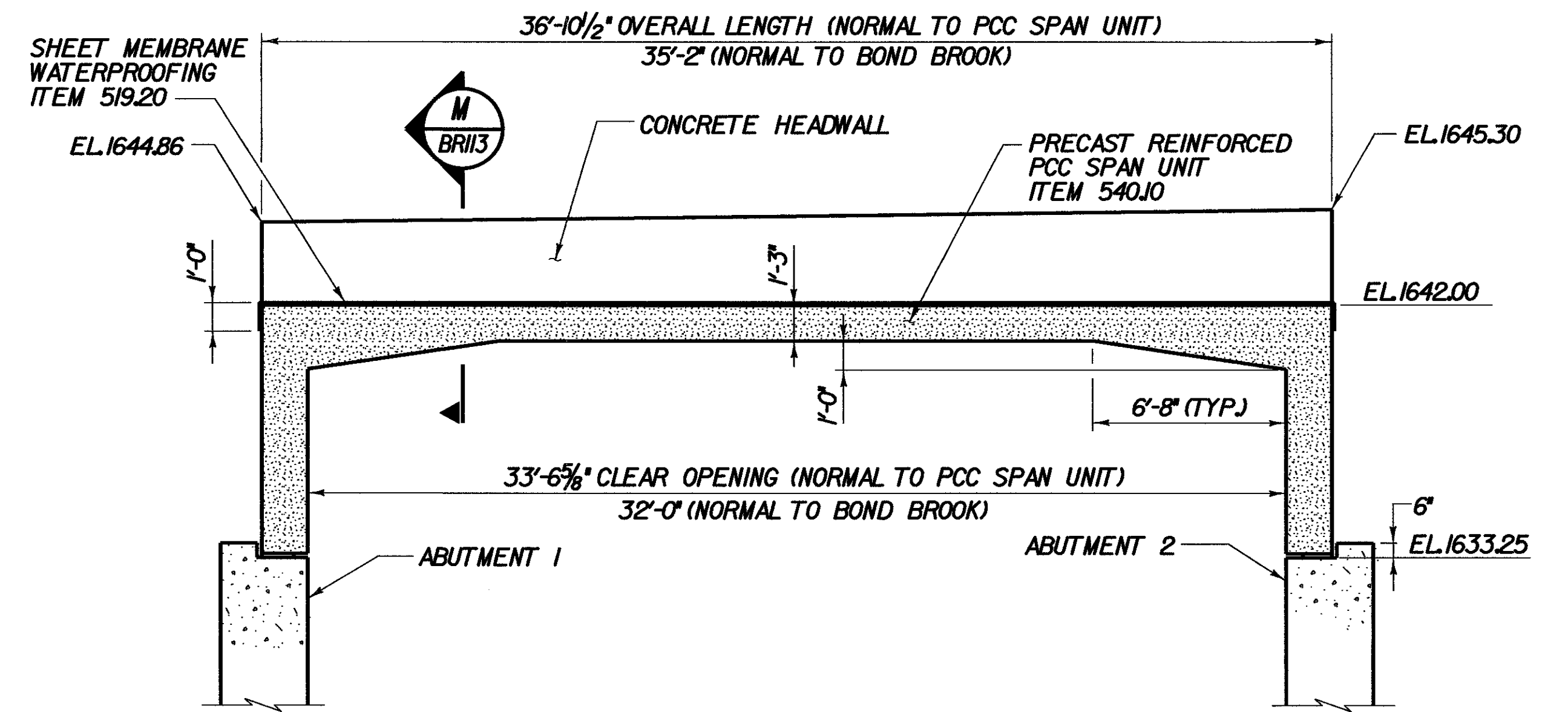
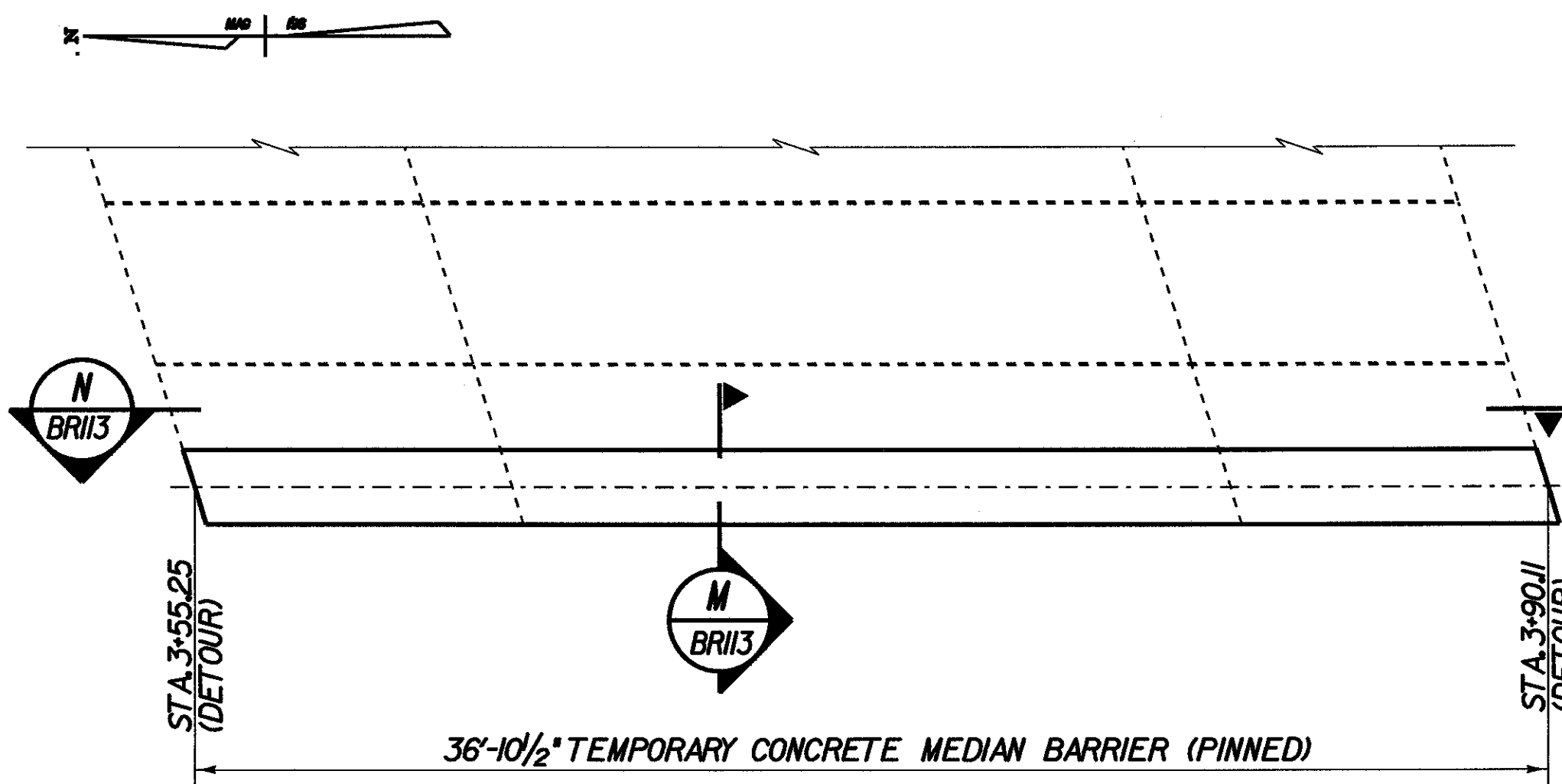


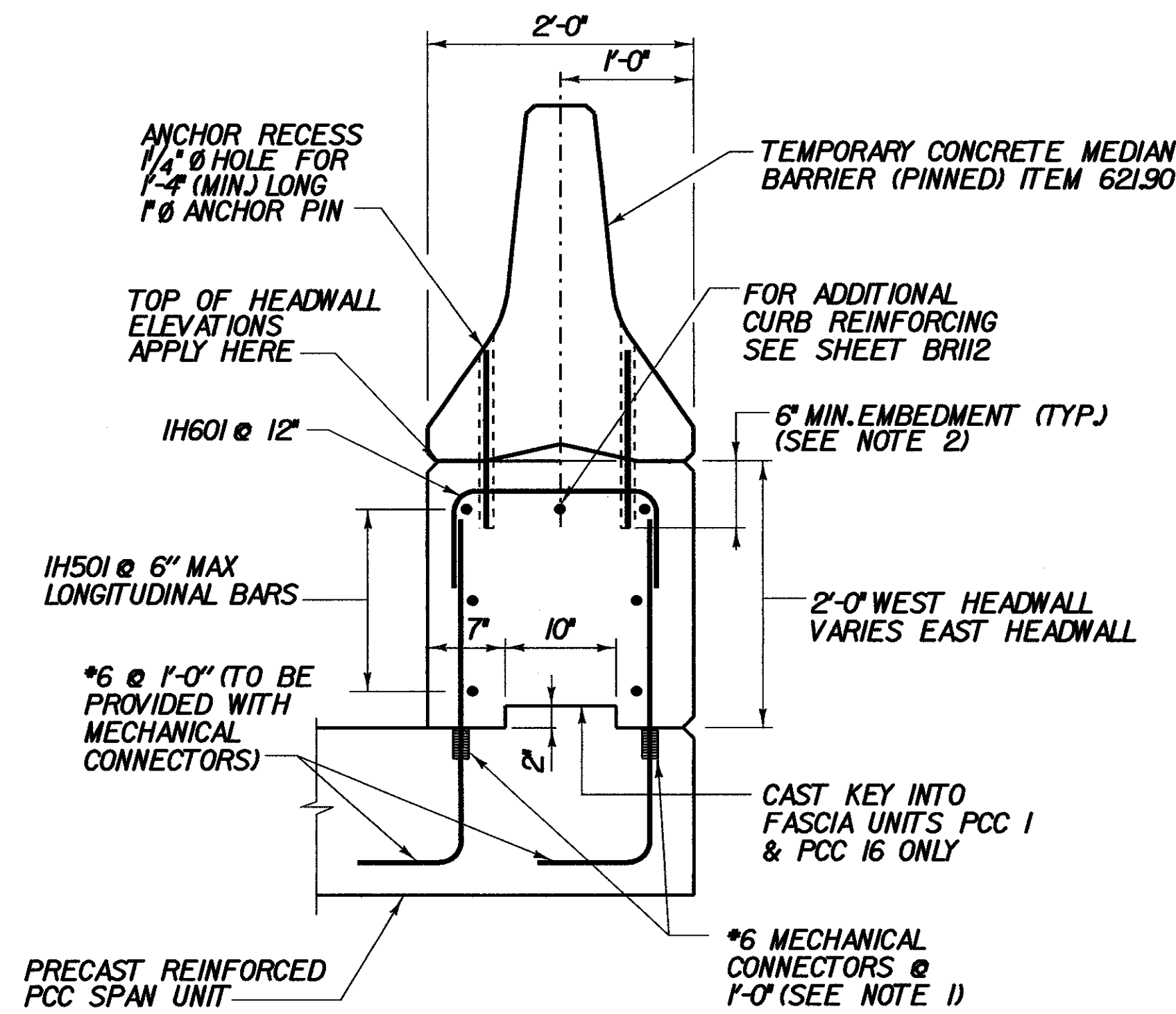
N WEST HEADWALL & PCC SPAN UNIT
 SCALE 1/4" = 1'-0"
 1 0 2 4 6



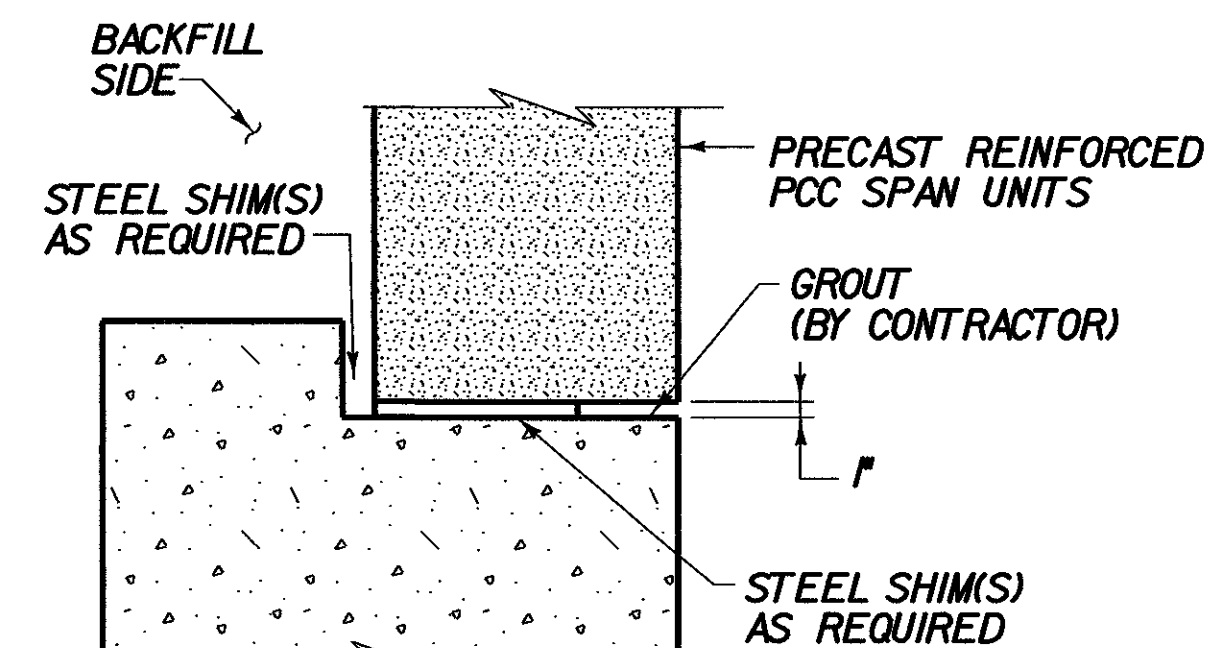
EAST HEADWALL & PCC SPAN UNIT
 (LOOKING EAST)
 SCALE 1/4" = 1'-0"
 1 0 2 4 6



HEADWALL & PCC SPAN UNIT PLAN
 (WEST HEADWALL ONLY)
 SCALE 1/4" = 1'-0"
 1 0 2 4 6



M CONCRETE HEADWALL DETAIL
 (WEST HEADWALL SHOWN, EAST HEADWALL SIMILAR)
 SCALE 1" = 1'-0"
 2 1 0 3 6 9 1



I TYPICAL KEY DETAIL
 SCALE 1" = 1'-0"
 2 1 0 3 6 9 1

NOTE:

- MECHANICAL CONNECTORS SHALL BE CAST INTO THE PRECAST UNITS AND BE DESIGNED WITH #6 REINFORCING. STEEL CONNECTORS SHALL BE NON-CORROSIVE AND WHEN USED IN 3500 PSI CONCRETE, ABLE TO RESIST MINIMUM PULLOUT LOAD OF 90% OF THE MINIMUM TENSILE STRENGTH OF THE REINFORCING BAR. COST SHALL BE INCLUDED IN PRECAST REINFORCED PCC SPAN UNIT ITEM 507J5.
- TEMPORARY MEDIAN BARRIER SHALL BE PINNED AT ALTERNATING 2'-0" CENTERS EITHER BY MECHANICAL ANCHORS OR DRILL AND GROUT REINFORCEMENT. AFTER REMOVAL OF THE BARRIER, THE HOLES IN THE SURFACE USED TO ANCHOR THE BARRIER SHALL BE FILLED WITH A NON-SHRINK GROUT. COST OF ALL WORK ASSOCIATED WITH PINNING THE BARRIER SHALL BE SUBSIDIARY TO ITEM 62I90.

NOTE:

STEEL SHIMS AND GROUT SHALL BE AS REQUIRED BY THE PRECAST MANUFACTURER. COST TO BE SUBSIDIARY TO PCC ITEM #540J0

CHA CLOUGH, HARBOUR & ASSOCIATES LLP
 ENGINEERS, SURVEYORS, PLANNERS & LANDSCAPE ARCHITECTS
 11 WINNERS CIRCLE ALBANY, NEW YORK, 12208

STATE OF VERMONT AGENCY OF TRANSPORTATION

Town Of	SEARSBURG	Bridge No.	24
Highway No.	VT. RTE. 9	Log Sta.	
		Surv. Sta.	
VT. RTE.9 OVER BOND BROOK			
PRECAST PCC SPAN UNIT AND HEADWALL DETAILS			
Designed By	M. GOGUEN	Drawn by	K. DETRICK/Wm WEATHERBY
Checked By	M. OLSTAD	Date	2/2002
		Bridge Design Supervisor	M. OLSTAD
		Date	2/2002
PROJECT	SEARSBURG - WILMINGTON	PROJECT NO.	NHF 010-118
I.G.C. Info.			
Bridge Sheet No. BRII3		Sheet 124 OF 435	