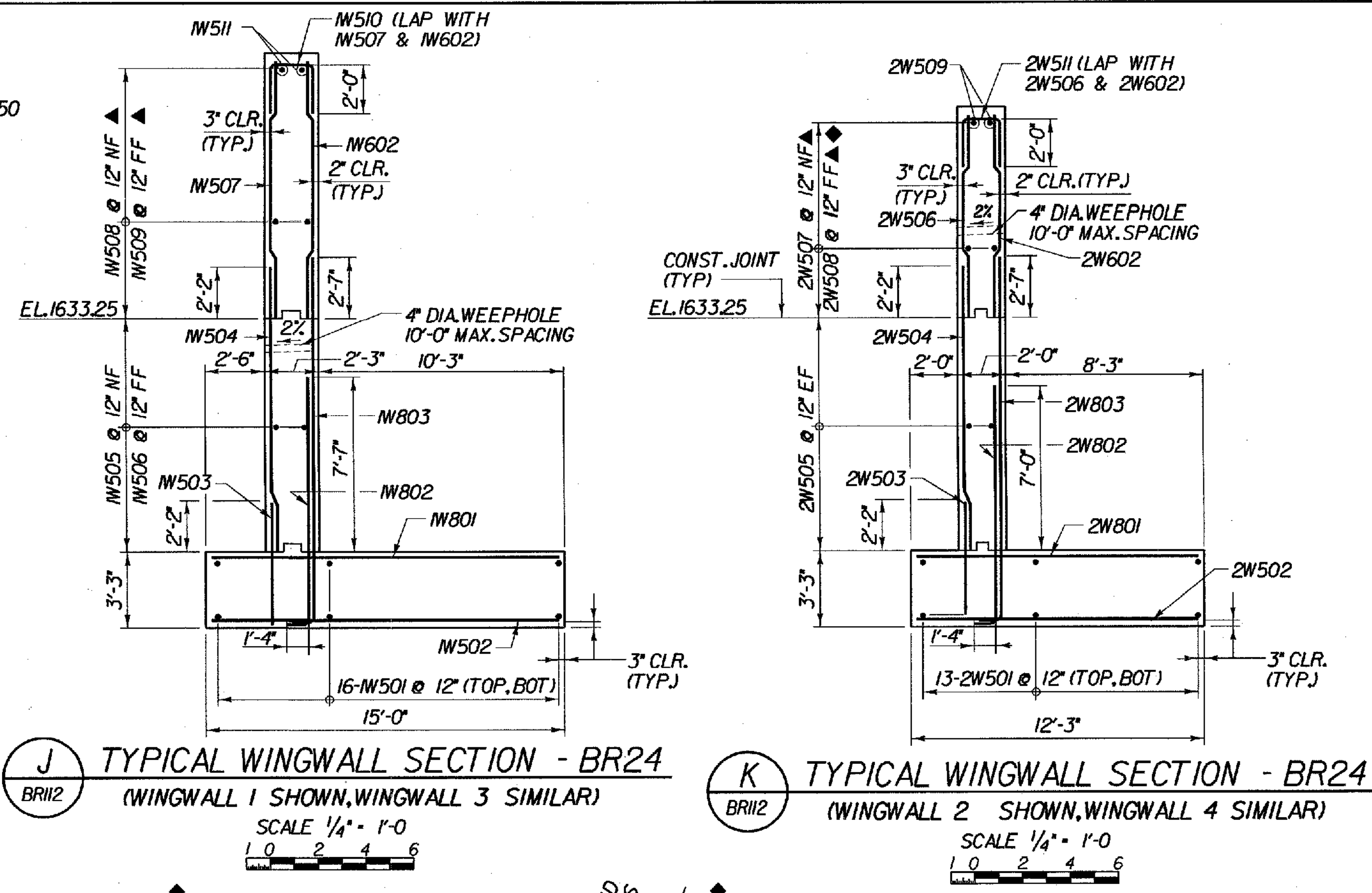
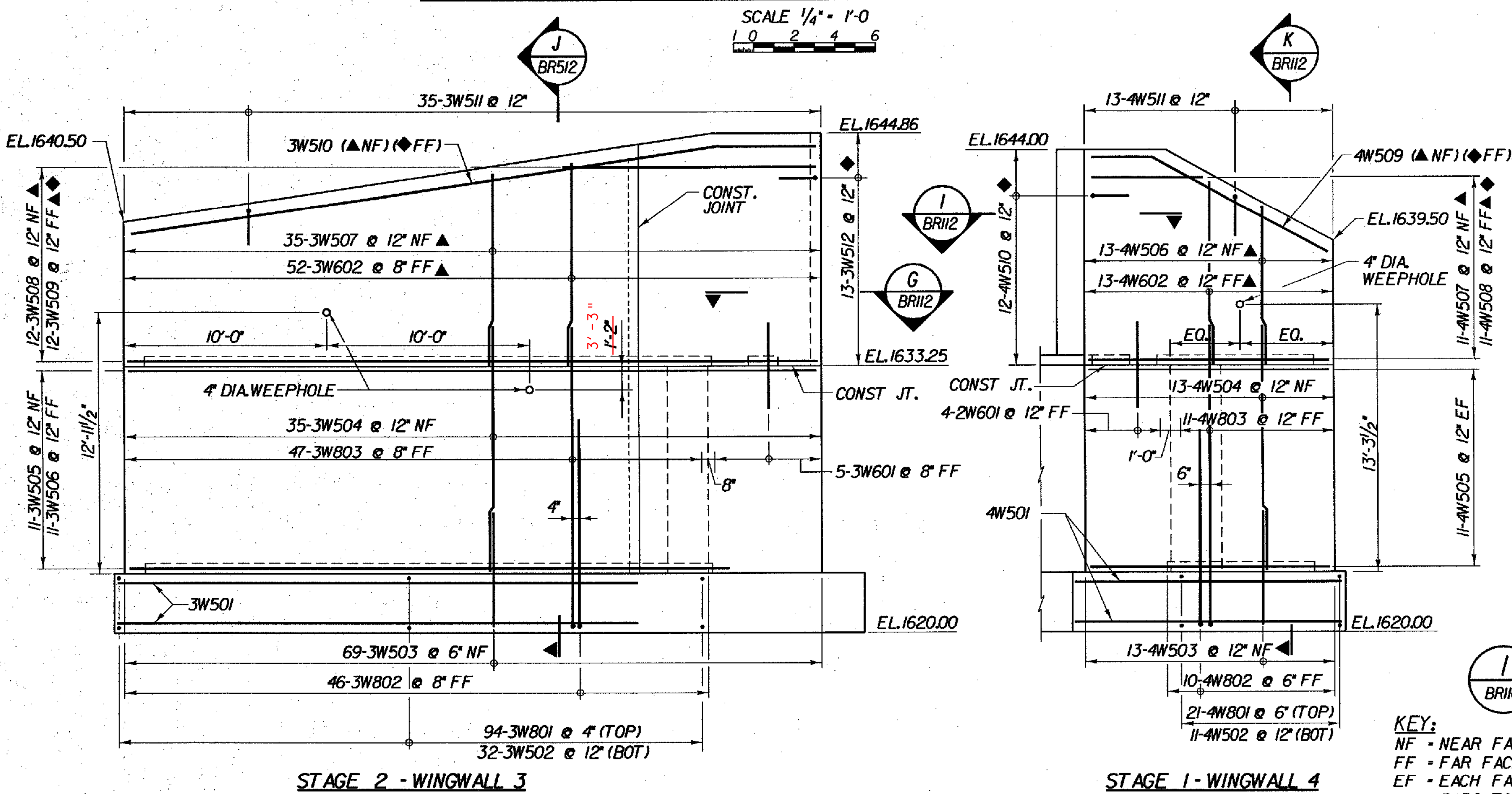


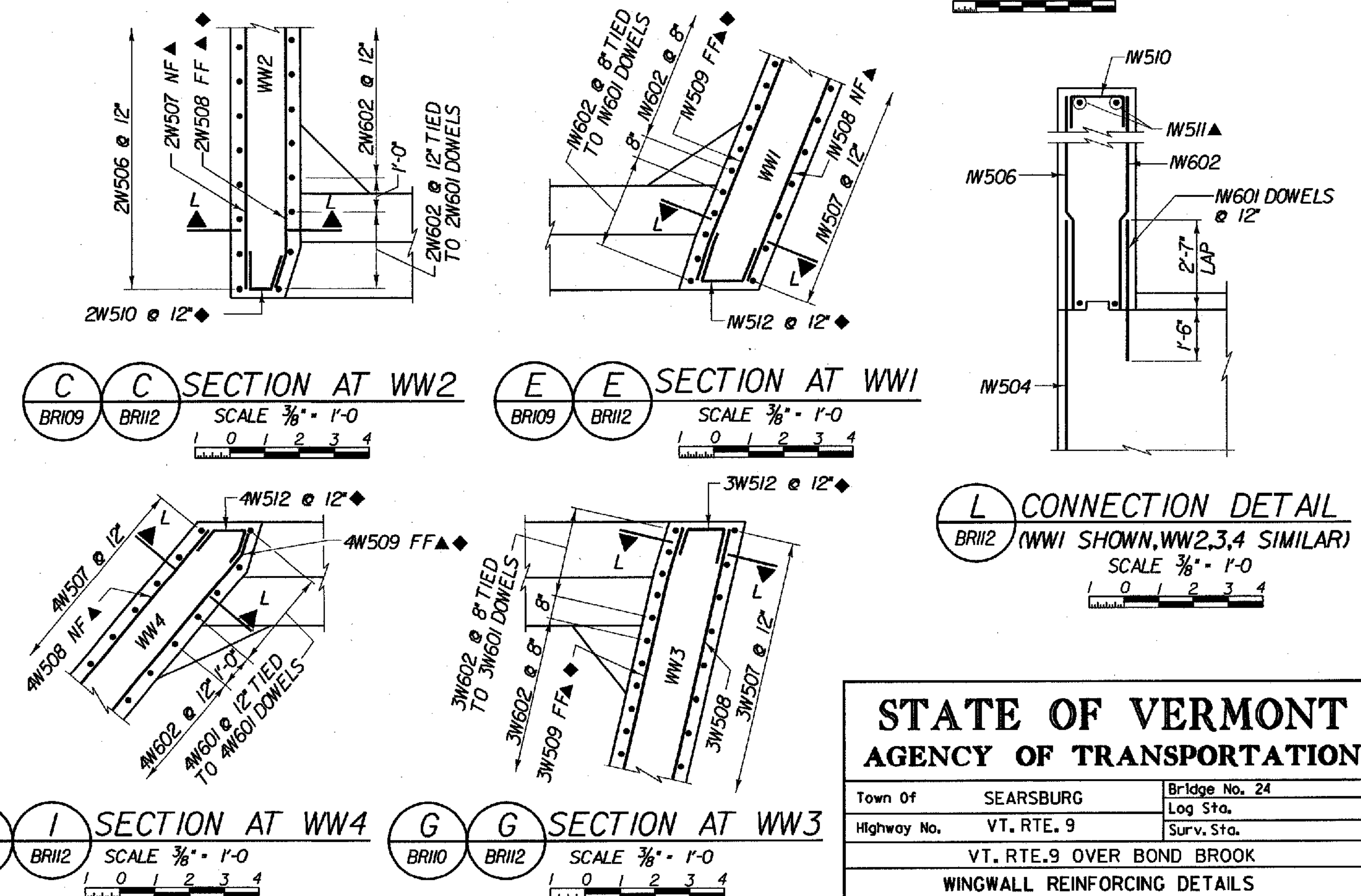
STAGE 1 - WINGWALL 2
STAGE 2 - WINGWALL 1
ABUTMENT 1 WINGWALL REINFORCING ELEVATIONS - BR24



J TYPICAL WINGWALL SECTION - BR24 (WINGWALL 1 SHOWN, WINGWALL 3 SIMILAR)
K TYPICAL WINGWALL SECTION - BR24 (WINGWALL 2 SHOWN, WINGWALL 4 SIMILAR)
SCALE 1/4" = 1'-0"



STAGE 2 - WINGWALL 3
STAGE 1 - WINGWALL 4
ABUTMENT 2 WINGWALL REINFORCING ELEVATIONS - BR24



C SECTION AT WW2
E SECTION AT WW1
I SECTION AT WW4
G SECTION AT WW3
L CONNECTION DETAIL
SCALE 3/8" = 1'-0"

KEY:
NF - NEAR FACE
FF - FAR FACE
EF - EACH FACE
▲ - BARS TO BE CUT IN FIELD
◆ - FIELD BEND
3" CLR. UNLESS OTHERWISE SPECIFIED ON THE PLANS.



| | |
|--|--------------------------------|
| STATE OF VERMONT AGENCY OF TRANSPORTATION | |
| Town of SEARSBURG | Bridge No. 24 |
| Highway No. VT. RTE. 9 | Log Sta. |
| VT. RTE. 9 OVER BOND BROOK | |
| WINGWALL REINFORCING DETAILS | |
| Designed By M. GOGUEN | Drawn by J. LAGONE/ K. DETRICK |
| Checked By M. OLSTAD | Bridge Design Supervisor |
| Date 2/2002 | Date 2/2002 |
| PROJECT SEARSBURG - WILMINGTON | PROJECT NO. NHF 010-1181 |
| I.G.C. Info. | |
| Bridge Sheet No. BR112 | Sheet 123 OF 435 |