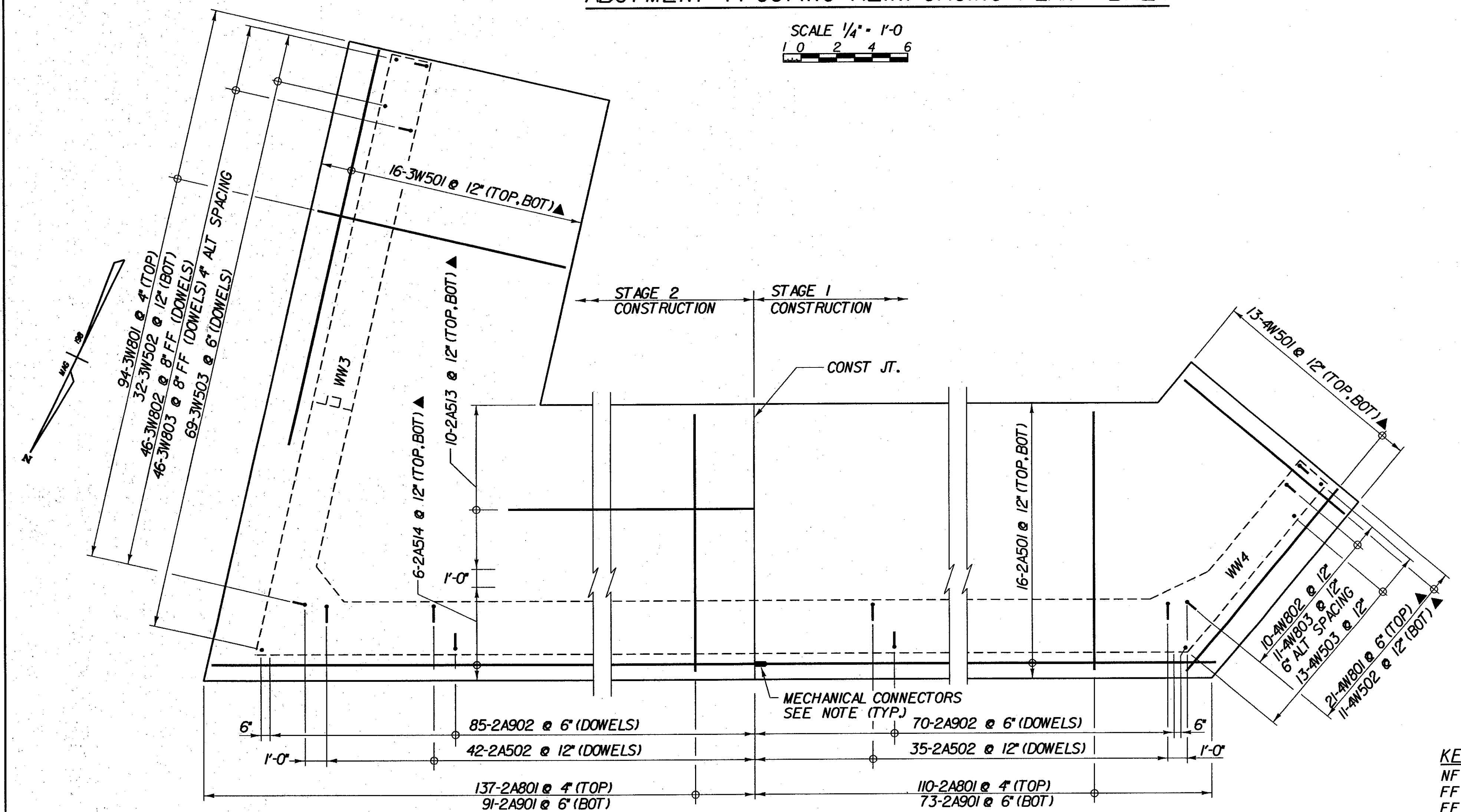


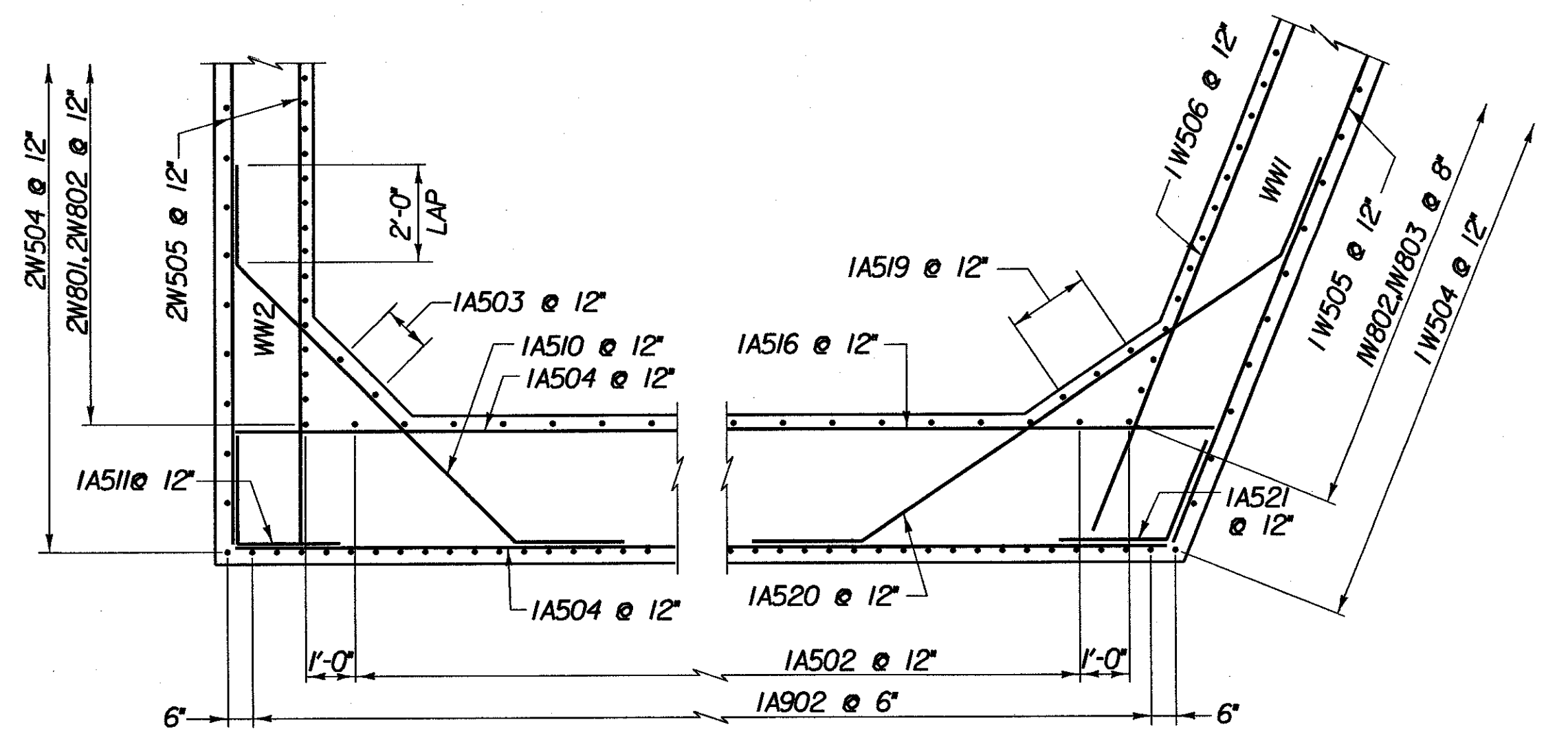
ABUTMENT 1 FOOTING REINFORCING PLAN - BR24

SCALE 1/4" = 1'-0"  
 1 0 2 4 6



ABUTMENT 2 FOOTING REINFORCING PLAN - BR24

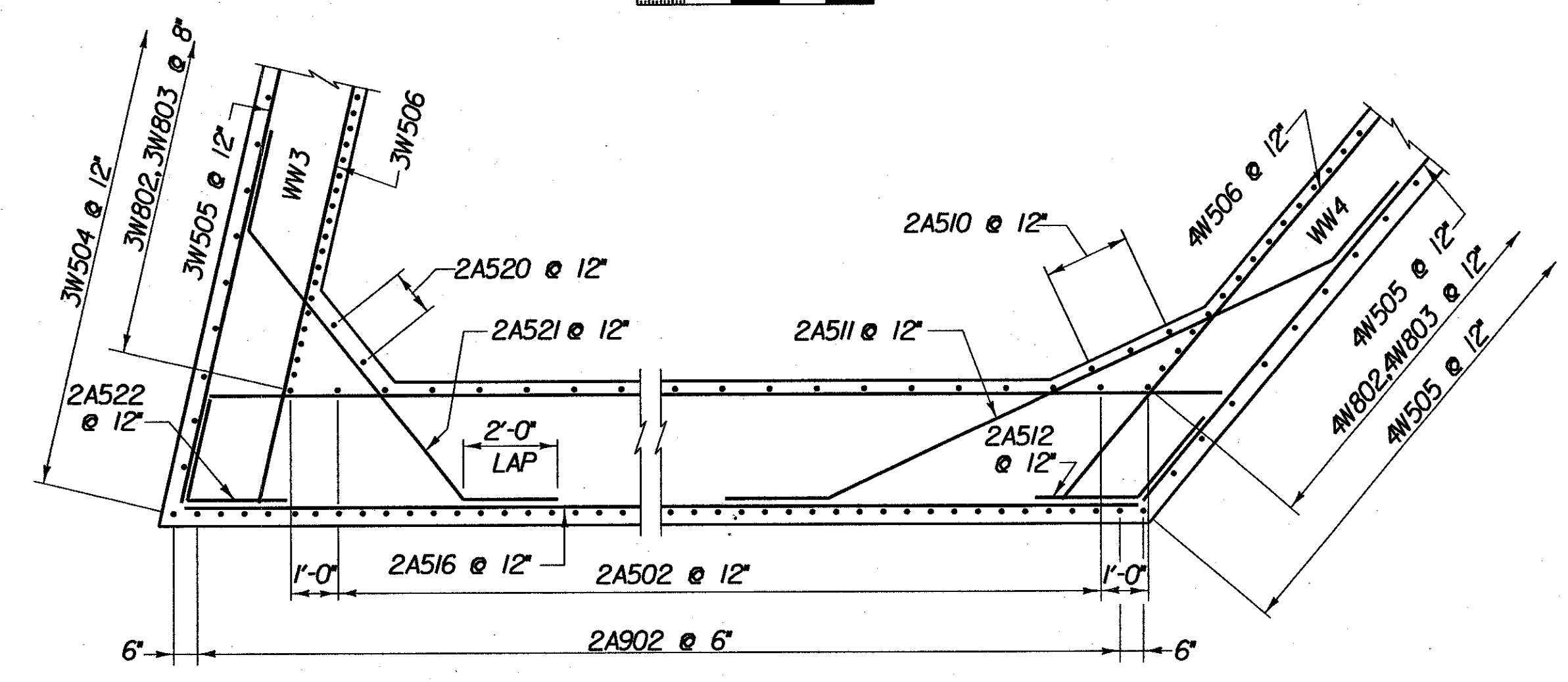
SCALE 1/4" = 1'-0"  
 1 0 2 4 6



D ABUTMENT 1 CORNER AND FILLET DETAILS

BR109

SCALE 3/8" = 1'-0"  
 1 0 1 2 3 4



H ABUTMENT 2 CORNER AND FILLET DETAILS

BR110

SCALE 3/8" = 1'-0"  
 1 0 1 2 3 4

**NOTE:**  
 1. MECHANICAL CONNECTORS SHALL BE DESIGNED WITH #5 REINFORCING. STEEL CONNECTORS SHALL BE NON-CORROSIVE AND WHEN USED IN 3500 PSI CONCRETE, ABLE TO RESIST MINIMUM PULLOUT LOAD OF 90% OF THE MINIMUM TENSILE STRENGTH OF THE REINFORCING BAR. COST SHALL BE INCLUDED IN ITEM 507.15.

**KEY:**  
 NF - NEAR FACE  
 FF - FAR FACE  
 EF - EACH FACE  
 ▲ - CUT TO FIT IN FIELD  
 ◆ - FIELD BEND  
 3" CLR. UNLESS OTHERWISE SPECIFIED ON THE PLANS.

STATE OF VERMONT AGENCY OF TRANSPORTATION			
Town Of	SEARSBURG	Bridge No.	24
Highway No.	VT. RTE. 9	Log Sta.	
		Surv. Sta.	
VT. RTE.9 OVER BOND BROOK FOOTING REINFORCING PLANS			
Designed By	M. GOGUEN	Drawn by	J. LAGONE
Checked By	M. OLSTAD	Bridge Design Supervisor	M. OLSTAD
Date	2/2002	Date	2/2002
PROJECT	SEARSBURG - WILMINGTON	PROJECT NO.	NHF 010-1181
I.G.C. Info.		Bridge Sheet No.	BR111



FILE NAME: s:\9755\N151\br-dg24\24\_footing.dgn  
 DATE/TIME: 02/28/02  
 USER: 2225