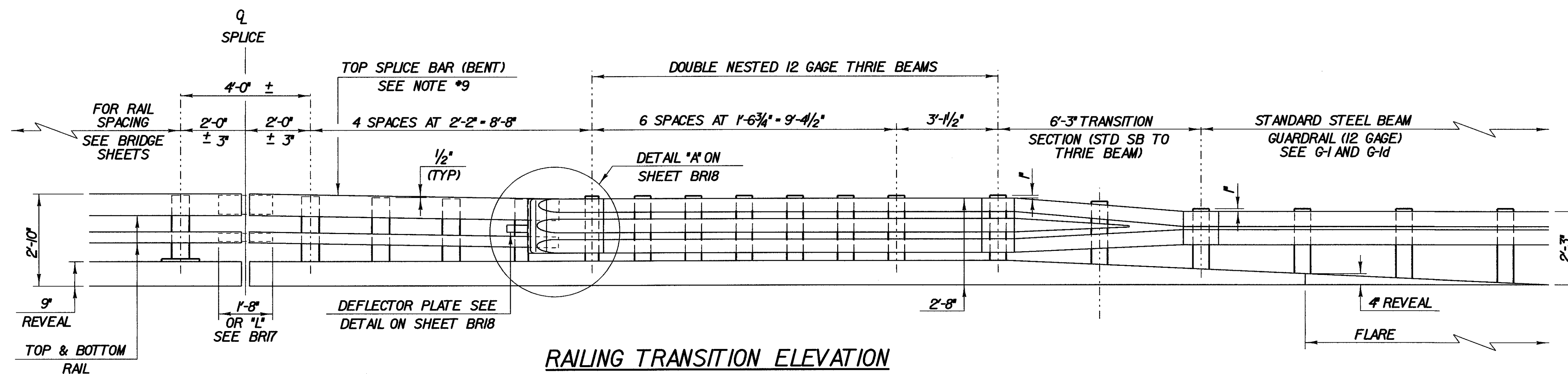
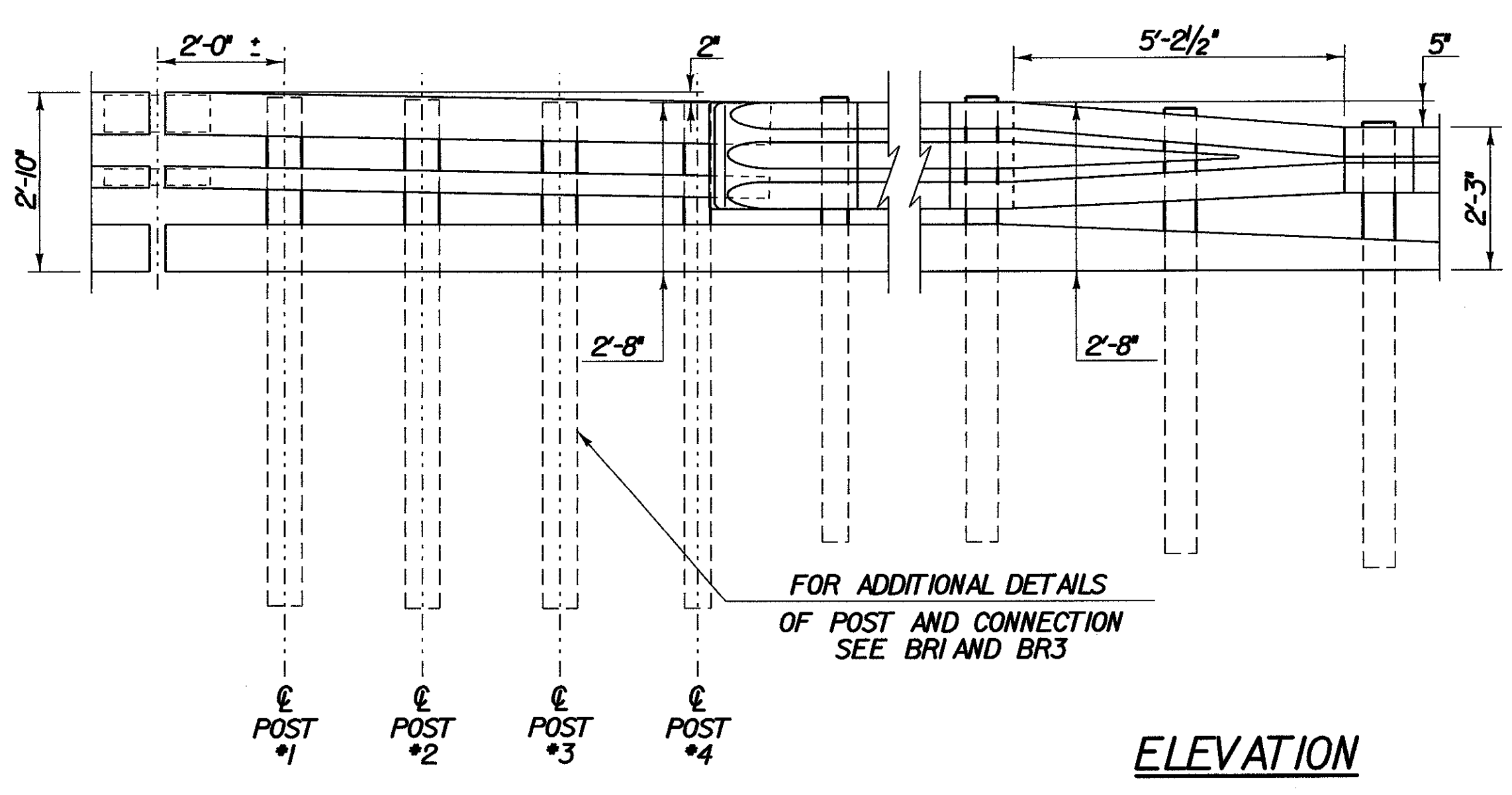


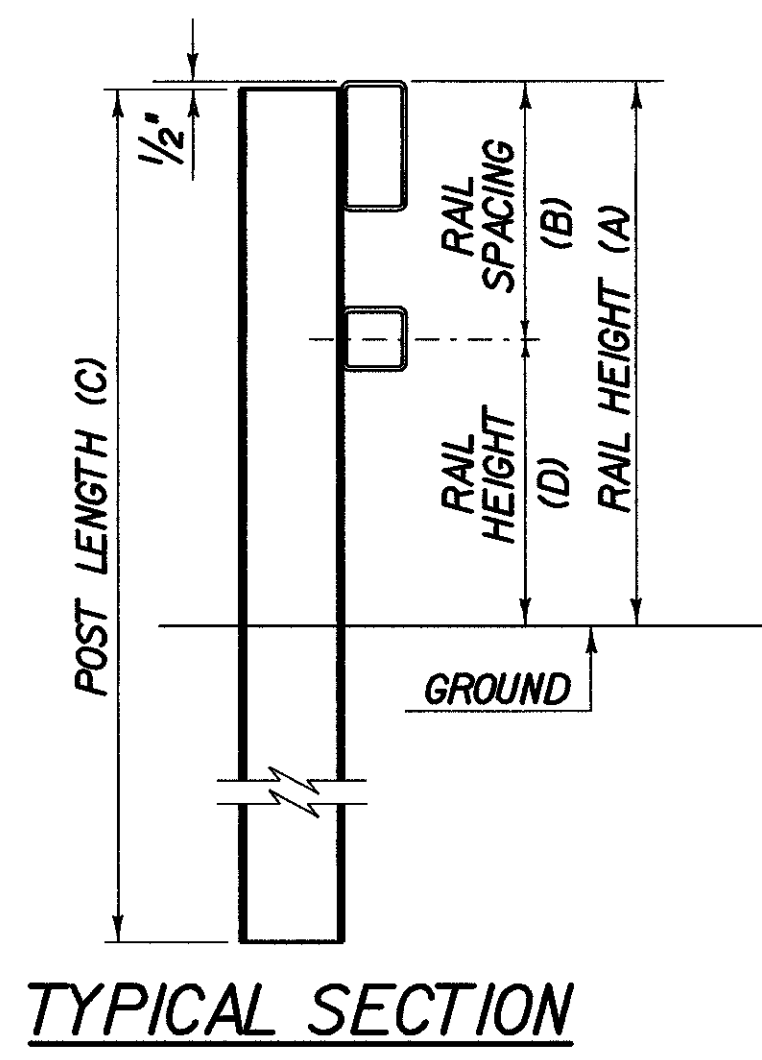
RAILING TRANSITION PLAN



RAILING TRANSITION ELEVATION

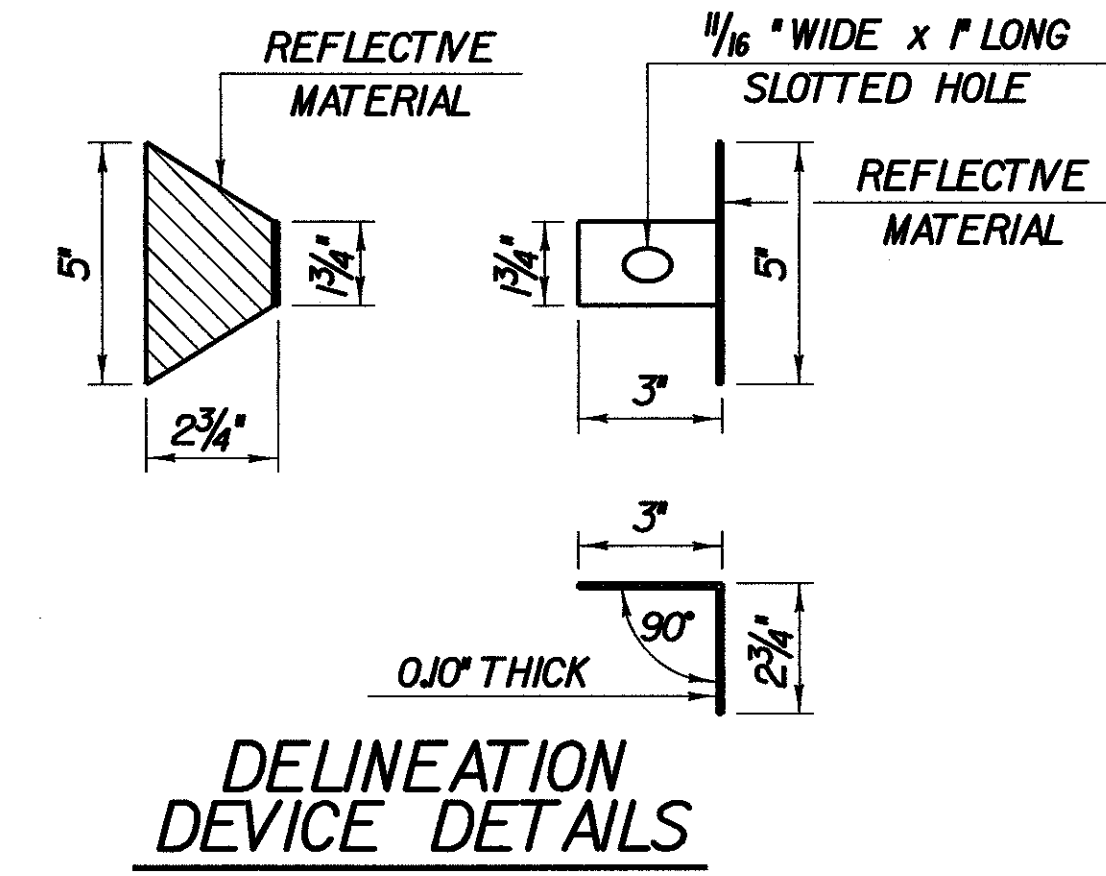


ELEVATION



TYPICAL SECTION

POST NUMBER	RAIL HEIGHT (A)	RAIL SPACING (B)	POST LENGTH (C)	RAIL HEIGHT (D)
1	2'-9 1/2"	1'-3 3/4"	8'-0"	1'-5 3/4"
2	2'-9"	1'-3 1/2"	8'-0"	1'-5 1/2"
3	2'-8 1/2"	1'-3 1/8"	8'-0"	1'-5 1/8"
4	2'-8"	1'-2 1/8"	8'-0"	1'-5 1/8"



DELINEATION DEVICE DETAILS

- NOTES**
- REFER TO SHEET BRI FOR ADDITIONAL DETAILS, NOTES AND MATERIAL SPECIFICATIONS.
 - PAYMENT FOR GUARD RAIL APPROACH SECTION - NETC 2 RAIL SHALL INCLUDE THE TERMINAL CONNECTOR, THE CONNECTION PLATE, THE DEFLECTOR PLATE, RAIL, POSTS, BLOCKS AND ATTACHMENT HARDWARE.
 - THE REFLECTORIZED ALUMINUM DELINEATION IS TO BE ERECTED EVERY 30' (OR CLOSEST POST) WITH A 3/8" DIAMETER BOLT. DELINEATORS SHALL MEET SPECIFICATION REQUIREMENTS FOR ASTM B209 ALLOY 5052-H32.
 - REFLECTIVE MATERIAL SHALL MEET REQUIREMENTS OF SUBSECTION 750.08 AND SHALL BE OF ENCAPSULATED LENS SILVER OR AMBER. AMBER IS TO BE INSTALLED ON THE DRIVER'S LEFT AND SILVER ON THEIR RIGHT.
 - ON BRIDGES WITH A SIDEWALK, DELINEATORS ARE NOT TO BE INSTALLED ON THE SIDEWALK SIDE OF THE BRIDGE (I.E. DELINEATORS INSTALLED ONLY ON THE CURB SIDE AND ON THE APPROACH ON THE CURB SIDE). PAYMENT SHALL BE SUBSIDIARY TO ALL OTHER ITEMS.
 - ALL APPROACH RAIL SPLICES SHALL BE LAPPED IN THE DIRECTION OF TRAFFIC FLOW.
 - ALL BRIDGE APPROACH RAIL MATERIALS, DIMENSION SIZES AND NOTES SHALL BE THE SAME AS THOSE OF THE BRIDGE RAIL, UNLESS OTHERWISE NOTED.
 - CARRIAGE BOLTS SHALL BE AASHTO M164 AND NUTS SHALL BE ASTM A563 GRADE A OR BETTER (GALVANIZED).
 - WELD TOP SPLICE BAR TO FIT BEND. USE COMPLETE PENETRATION WELD (B-U2).
 - THE CONCRETE CURB WILL BE PAID FOR AS ITEM 616.28, "CAST-IN-PLACE CONCRETE CURB, TYPE B."

**STATE OF VERMONT
AGENCY OF TRANSPORTATION**

Town Of	SEARSBURG	Bridge No.	
Highway No.	VT. RTE. 9	Log Sta.	
VT. RTE. 9 OVER DEERFIELD RIVER			
NETC RAIL DETAILS (3)			
Designed By	D. VIENI	Drawn by	K. DETRICK/WM WEATHERBY
Checked By	M. OLSTAD	Date	2/2002
		Bridge Design Supervisor	M. OLSTAD
		Date	2/2002
PROJECT	SEARSBURG - WILMINGTON	PROJECT NO.	NHF 010-(18)
I.G.C. Info.			
Bridge Sheet No. BRI9		Sheet 108 OF 435	

CHA CLOUGH, HARBOUR & ASSOCIATES LLP
ENGINEERS, SURVEYORS, PLANNERS & LANDSCAPE ARCHITECTS
11 WINNERS CIRCLE ALBANY, NEW YORK 12208

FILE NAME: N:\74983\Structures\consultant\022002\15\brdg_top\edf99br1.dgn
 DATE/TIME: 26-FEB-2002 10:58:00
 USER: BRH1:tcamb