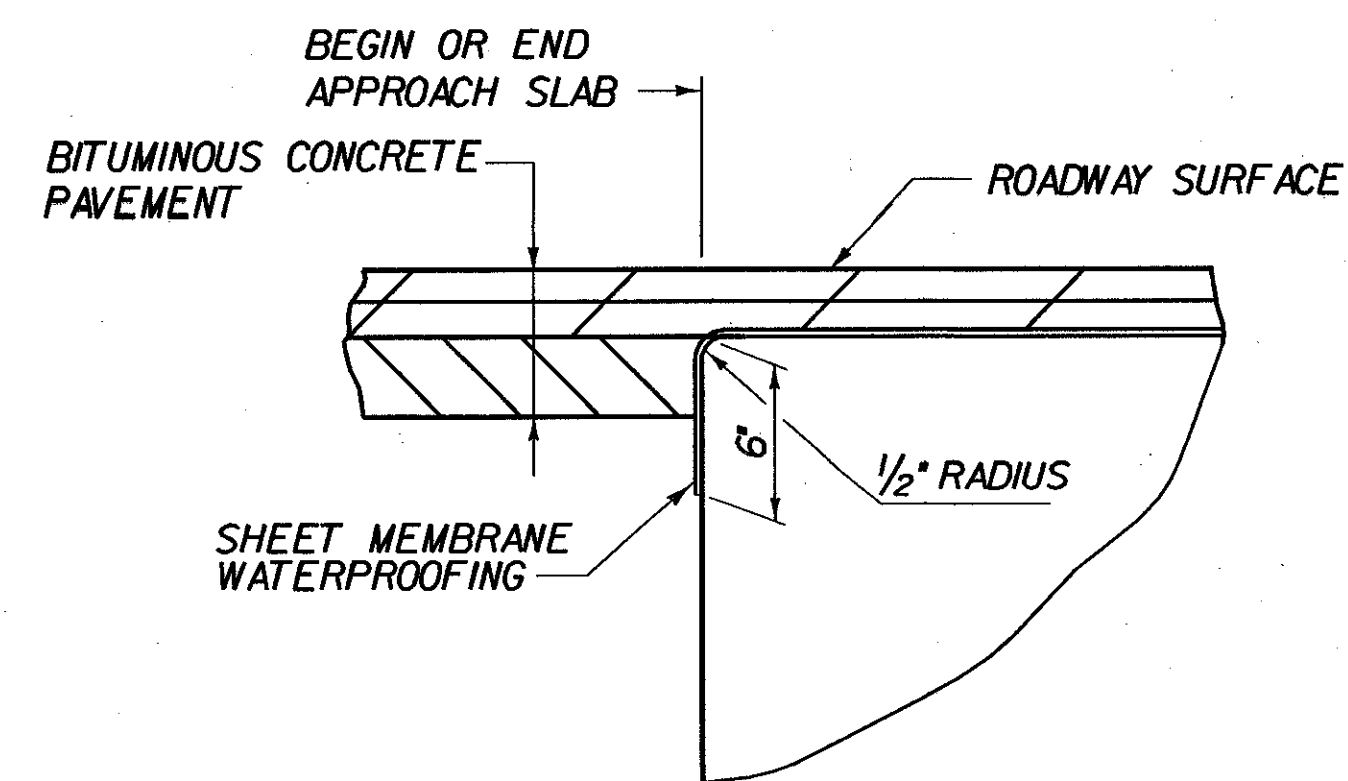
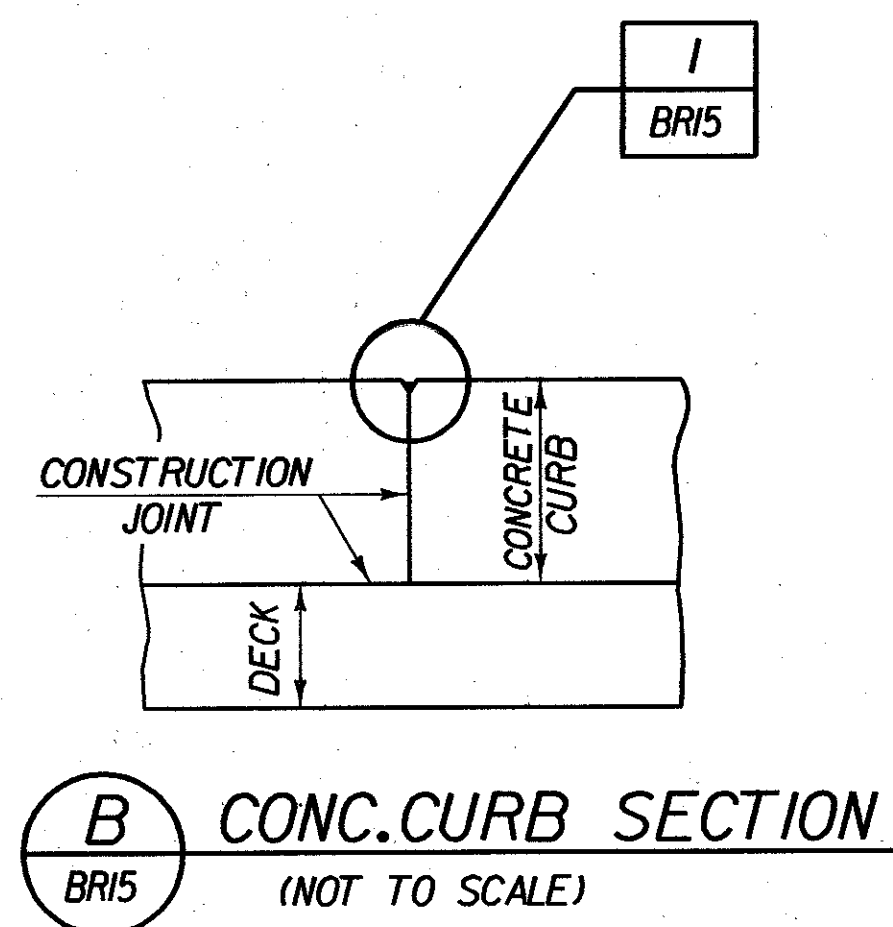


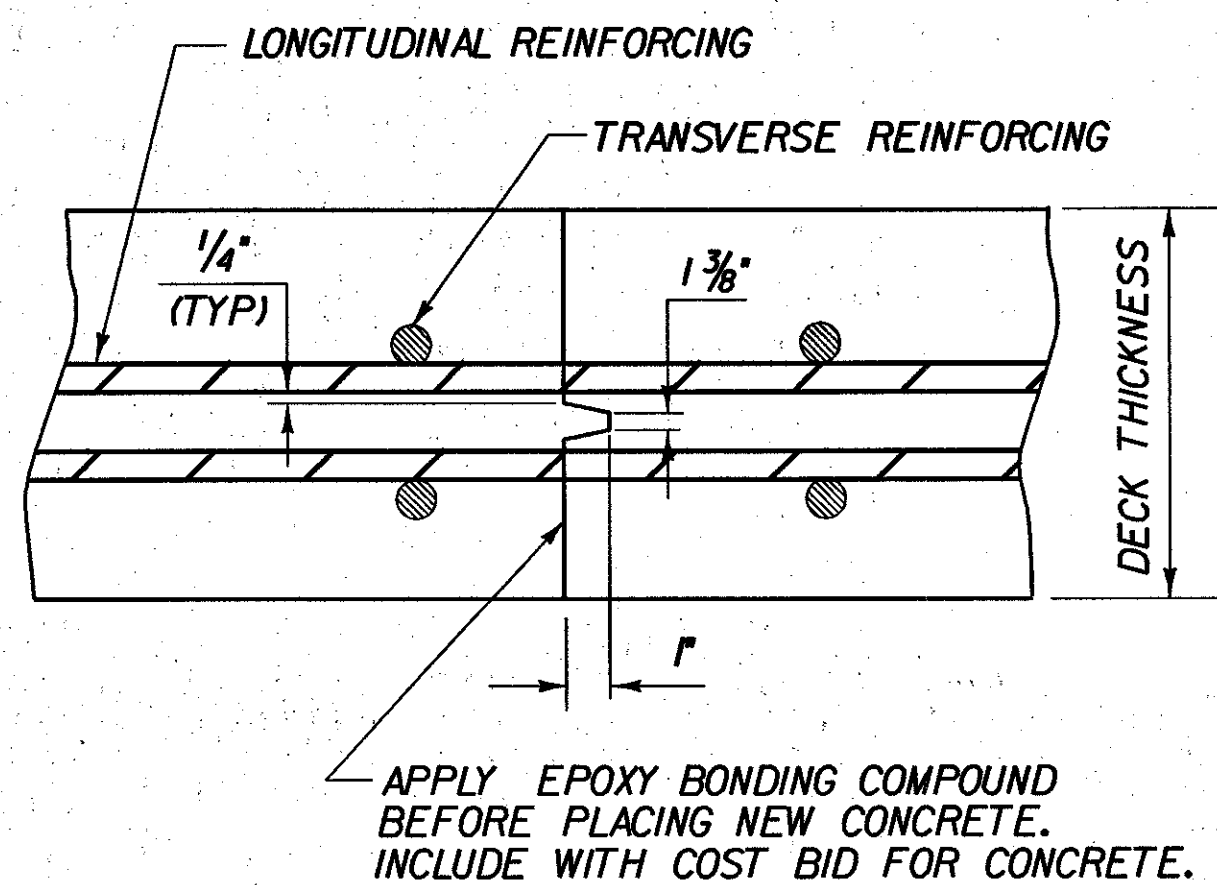
TYPICAL SECTION THROUGH CONCRETE CURB CONSTRUCTION JOINT
(NOT TO SCALE)



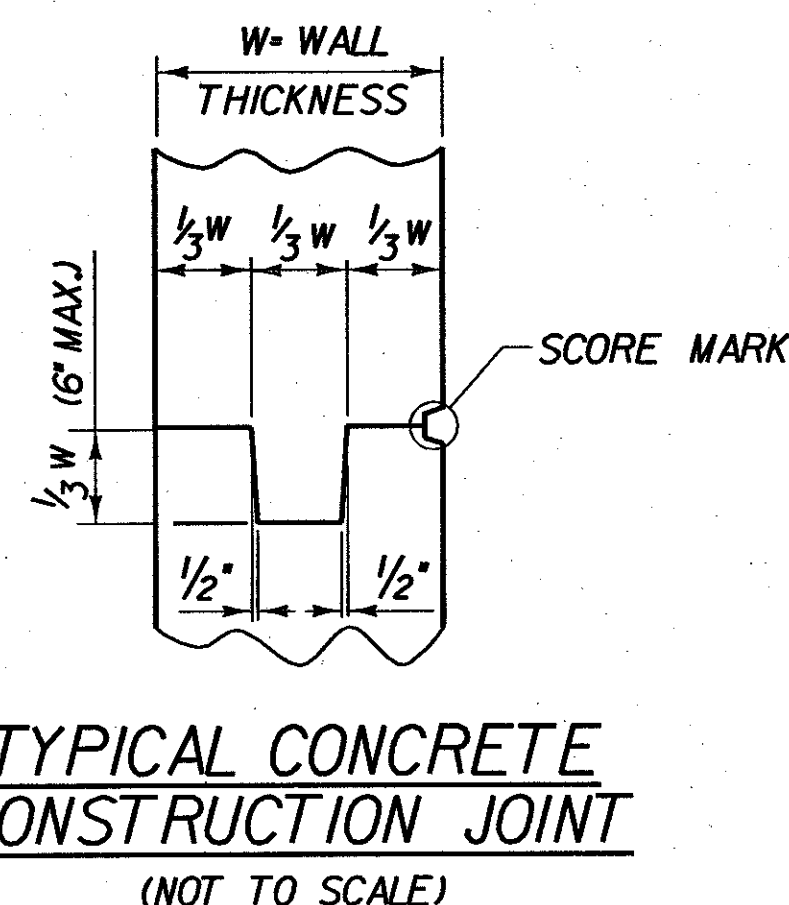
DETAIL FOR SHEET MEMBRANE AT APPROACH SLAB
(NOT TO SCALE)

CURB NOTES:

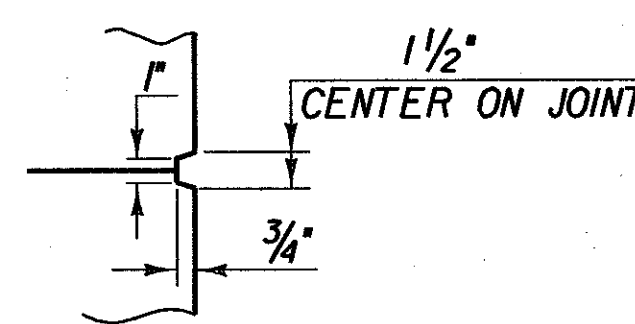
1. CONSTRUCTION JOINTS THROUGH CONCRETE CURBS SHALL BE SPACED MAXIMUM 15'-0" CENTER TO CENTER AND SHALL BE 1'-6" MINIMUM FROM THE CENTER OF THE NEAREST BRIDGE RAIL POST. CONCRETE SHALL BE PLACED IN ALTERNATING SECTIONS WITH A MINIMUM OF 48 HOURS DELAY BETWEEN ADJACENT POURS.
2. LONGITUDINAL REINFORCING SHALL PASS THROUGH CONCRETE CURB CONSTRUCTION JOINTS.
3. CONSTRUCTION JOINTS THROUGH SIDEWALKS SHALL BE SIMILAR TO CONCRETE CURB CONSTRUCTION JOINTS.



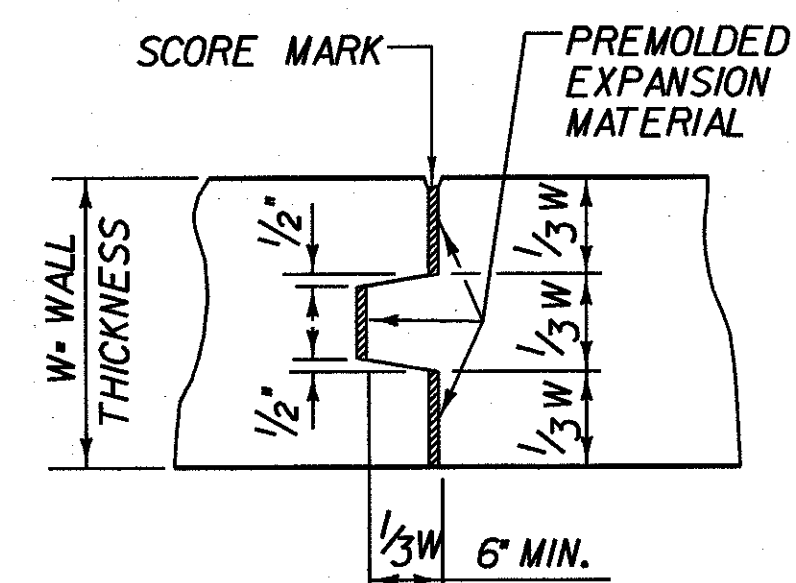
TRANSVERSE BRIDGE SLAB CONSTRUCTION JOINT DETAILS
(NOT TO SCALE)



TYPICAL CONCRETE CONSTRUCTION JOINT
(NOT TO SCALE)



SCORE MARK DETAIL
(NOT TO SCALE)



TYPICAL CONCRETE EXPANSION JOINT
(NOT TO SCALE)

FILE NAME = \\N785V51N1518-04g_TYP-0806sp1.dgn
DATE/TIME = 02/26/02
USER = 2225

STATE OF VERMONT AGENCY OF TRANSPORTATION

Town Of	SEARSBURG	Bridge No.	
Highway No.	VT. RTE. 9	Log Sta.	
		Surv. Sta.	
VT. RTE. 9 OVER DEERFIELD RIVER			
STANDARD DETAILS			
Designed By	D. VIEN	Drawn by	K. DETRICK
Checked By	M. OLSTAD	Date	2/2002
		Bridge Design Supervisor	M. OLSTAD Date 2/2002
PROJECT	SEARSBURG - WILMINGTON	PROJECT NO.	NHF 010-K18)
I.G.C. Info.		Bridge Sheet No. BR15	

CHA CLOUGH, HARBOUR & ASSOCIATES LLP
ENGINEERS, SURVEYORS, PLANNERS
& LANDSCAPE ARCHITECTS
11 WINNERS CIRCLE ALBANY, NEW YORK, 12205