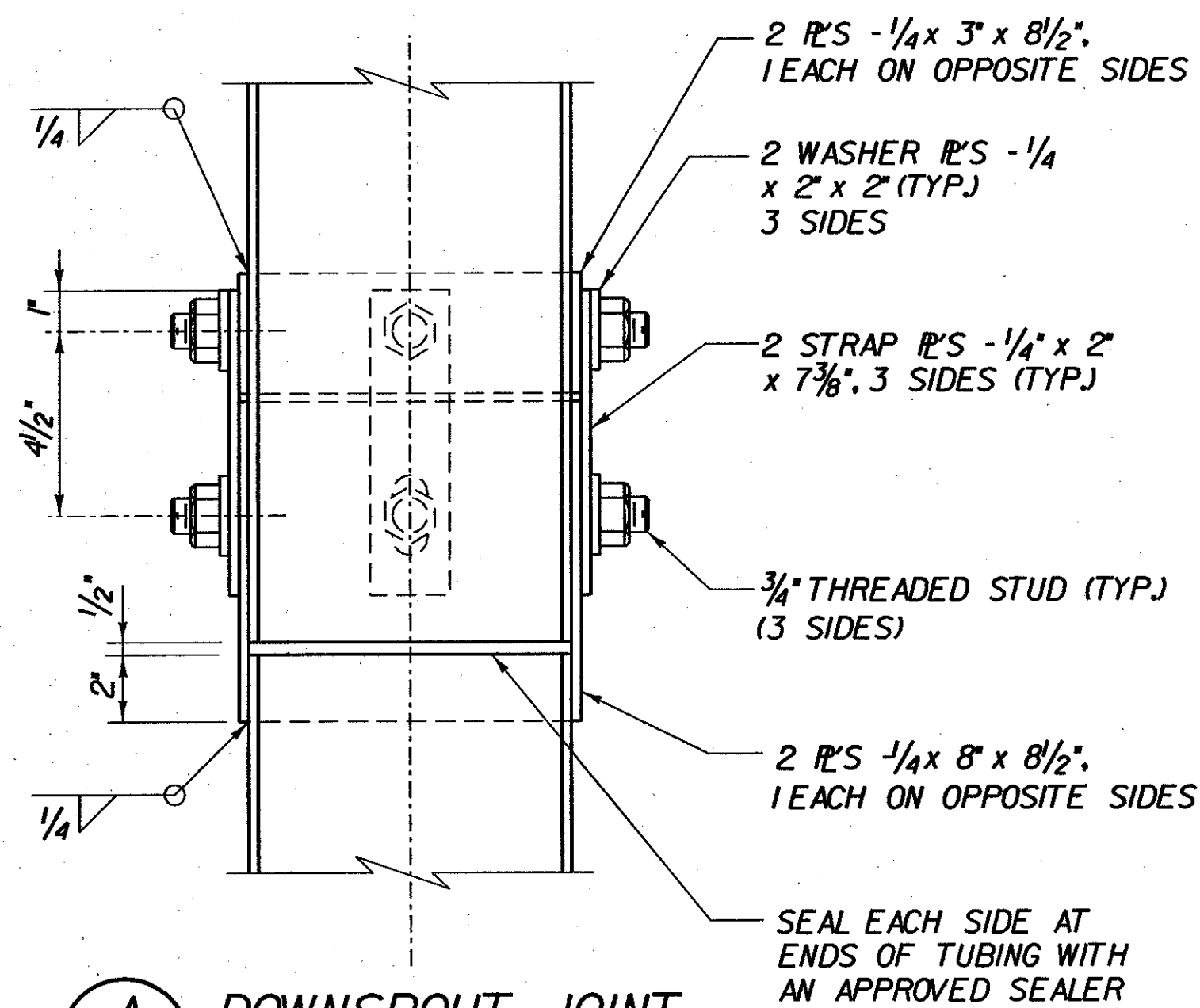


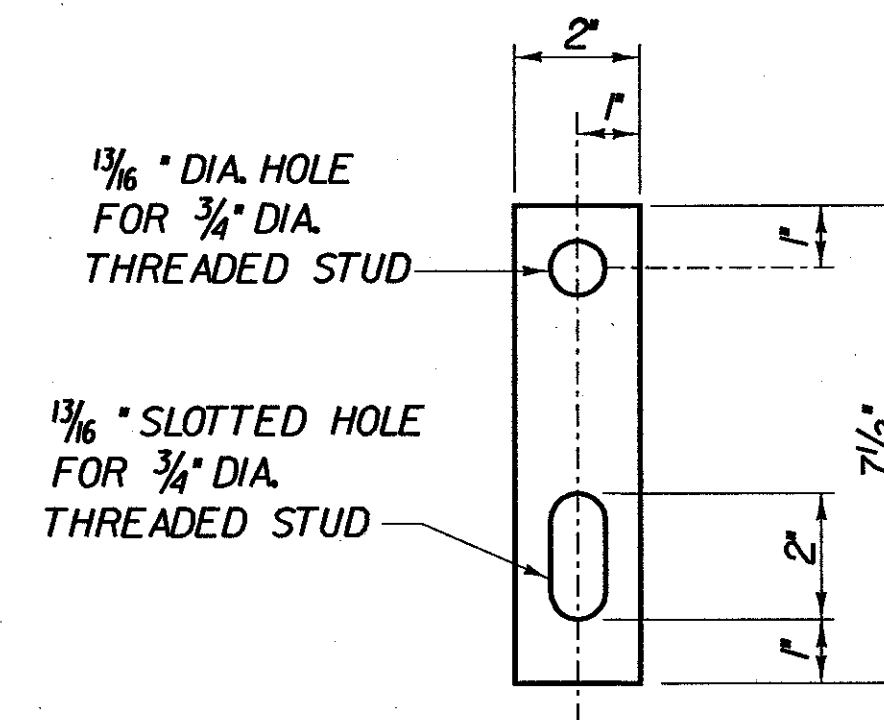
X ELEVATION-DOWNSPOUT CONNECTION DETAIL
BRII



A DOWNSPOUT JOINT
BRI2

DOWNSPOUT DETAILS

SCALE 3" = 1'-0"



1 DOWNSPOUT JOINT STRAP DETAIL
BRI2

DOWNSPOUT NOTES:

- HOLLOW STRUCTURAL STEEL TUBING SHALL CONFORM TO ASTM A500 GRADE B OR ASTM A501.
- ALL BARS SHALL CONFORM TO AASHTO M270 GRADE 36 AND SHALL BE GALVANIZED.
- DOWNSPOUT SHALL BE GALVANIZED IN ACCORDANCE WITH SECTION 506J5 AFTER FABRICATION.
- ALL DOWNSPOUT BOLTS AND RELATED HARDWARE SHALL BE ASTM A307 AND SHALL BE GALVANIZED IN ACCORDANCE WITH SECTION 506J5.
- WHERE THE GALVANIZING HAS BEEN REMOVED FROM THE DOWNSPOUT OR 1" x $\frac{1}{2}$ " BAR EITHER BY CUTTING, BURNING, WELDING, PLACING OR ANY OTHER MEANS, IT SHALL BE REPAIRED IN ACCORDANCE WITH SECTION 513 OF THE SUPPLEMENTAL SPECIFICATION.
- DOWNSPOUT SHALL BE PAID FOR UNDER EXPANSION JOINT ITEM 516J0.

STATE OF VERMONT
AGENCY OF TRANSPORTATION

Town Of	SEARSBURG	Bridge No. 25
Highway No.	VT. RTE. 9	Log Sta.
		Surv. Sta.

VT. RTE. 9 OVER DEERFIELD RIVER

TYPICAL DOWNSPOUT DETAILS AND NOTES

Designed By	D. VIENI	Drawn by	K. DETRICK/Wm WEATHREBY
Checked By	M. OLSTAD	Bridge Design Supervisor	M. OLSTAD
Date	2/2002	Date	2/2002
PROJECT	SEARSBURG - WILMINGTON	PROJECT NO.	NHF 010-118)

L.C. Info.	Bridge Sheet No. BRI2	Sheet 104 OF 435
------------	-----------------------	------------------

CHA CLOUGH, HARBOUR & ASSOCIATES LLP
ENGINEERS, SURVEYORS, PLANNERS
& LANDSCAPE ARCHITECTS
WINNERS CIRCLE ALBANY, NEW YORK, 12005