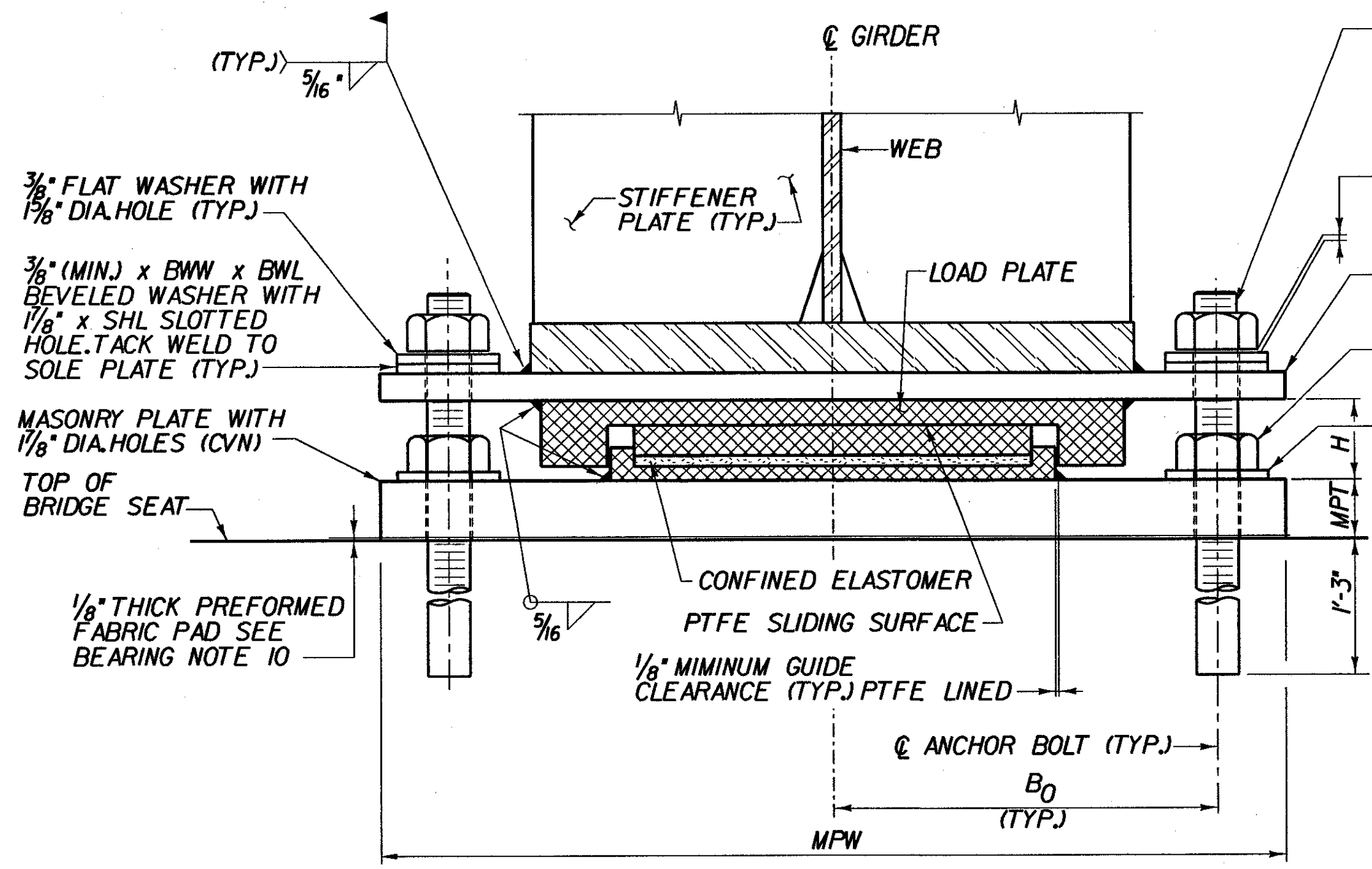


PLAN AT ABUTMENT
(NOT TO SCALE)

BRIDGE 25, ABUTMENT 1 ONLY
CLIP CORNER OF SOLE
PLATE 1/4" x 1/4"



B EXPANSION BEARING
(NOT TO SCALE)

SWEDGED ANCHOR BOLT GALVANIZED WITH 1" THREAD. WHEN TIGHTENING NUTS, LEAVE 1/8" GAP BETWEEN THE BOTTOM OF THE NUT AND TOP OF THE WASHER. THREAD SHALL BE BURRED TO PREVENT REMOVAL OF THE NUT (TYP.)

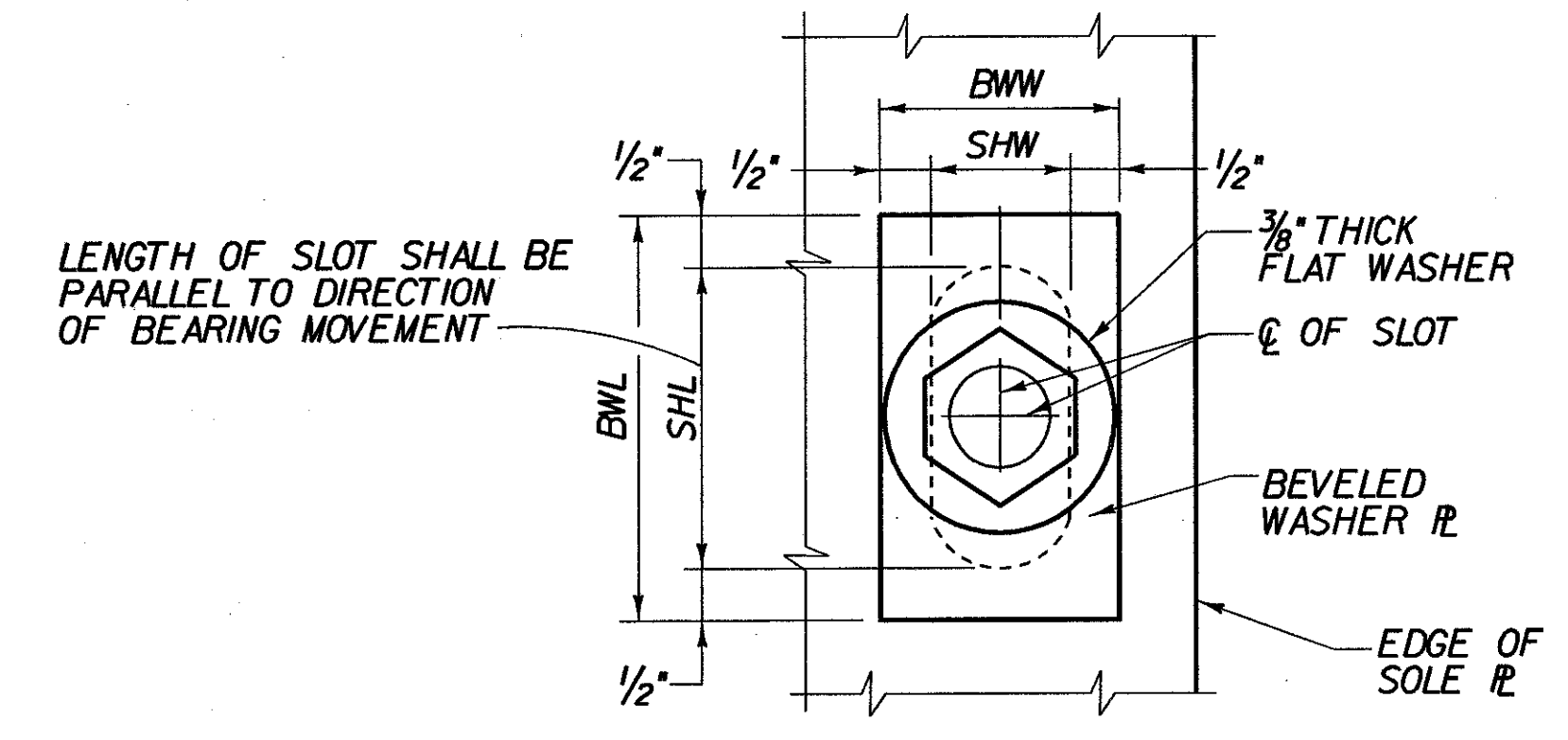
1/8" GAP

SOLE PLATE WITH SLOTTED HOLES

NUT SHALL BE TIGHTENED TO A SNUG FIT AND GIVEN AN ADDITIONAL 1/8 TURN (TYP.)

3/8" FLAT WASHER WITH 1/8" DIA. HOLE

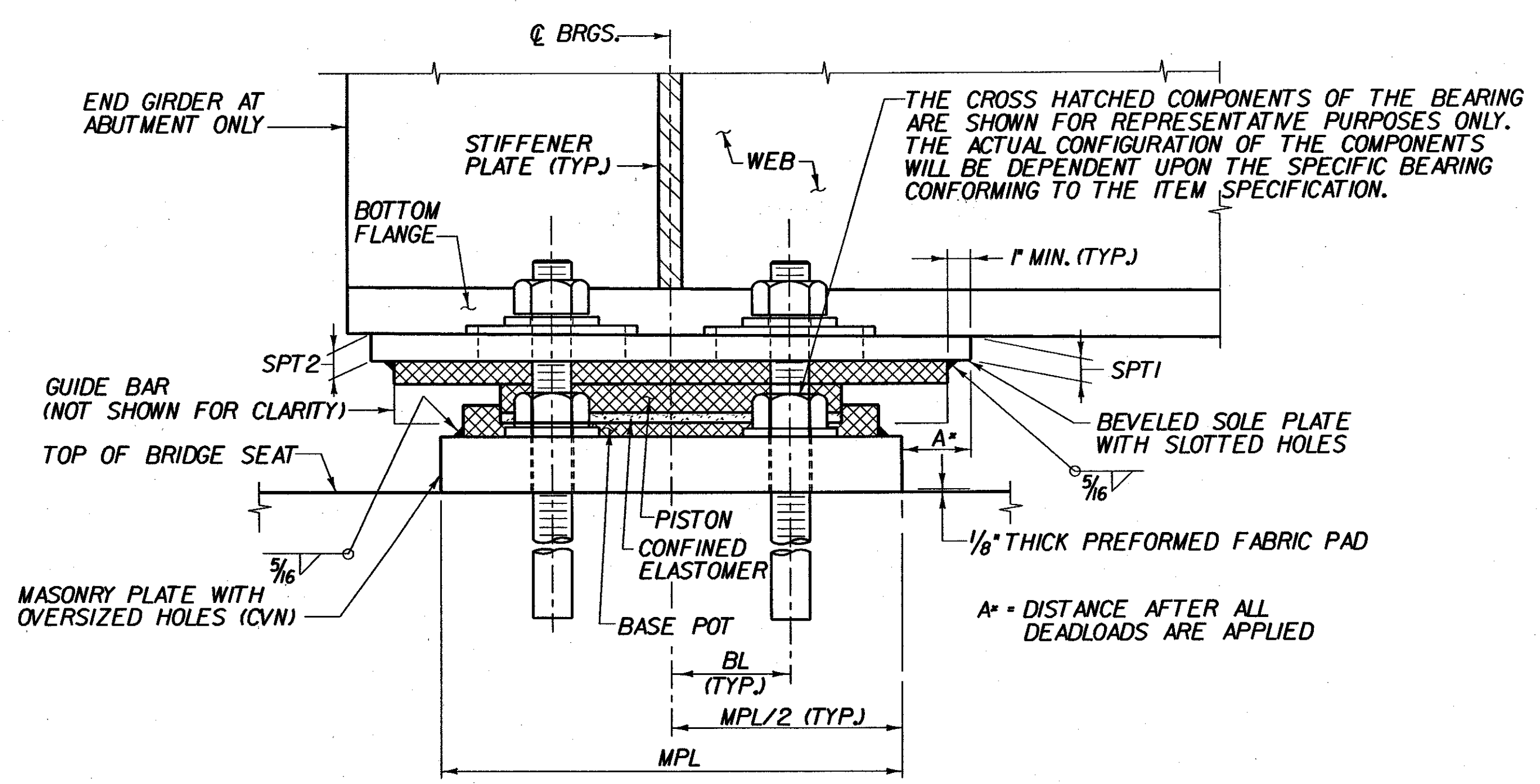
- NOTES:**
- FOR EXPANSION BEARING GEOMETRY TABLES, SEE SHEET BR7.
 - * ONE WAY LONGITUDINAL MOVEMENT IS THE MAXIMUM MOVEMENT (CONTRACTION) OF THE SUPERSTRUCTURE WHEN BEARINGS ARE SET @ 45° PLUS ELONGATION DUE TO CAMBER, PLUS AN ADDITIONAL 1" FOR TOLERANCE.
 - ** BEARINGS SHALL BE CAPABLE OF MAINTAINING A MINIMUM LOAD OF 20% OF MAXIMUM DESIGN CAPACITY AT ALL TIMES.
 - *** ALL BEARINGS SHALL BE CAPABLE OF RESISTING BOTH THEIR MAXIMUM HORIZONTAL AND VERTICAL DESIGN LOADS



I TYPICAL WASHER PLATE DETAIL
(NOT TO SCALE)

BEARING DEVICE NOTES :

- BEARING SHALL CONFORM TO REQUIREMENTS OF SECTION 531 AND SUBSECTION 531.04h (CONFINED ELASTOMER (POT) BEARING COMPONENTS SHALL CONFORM TO DESIGN, FABRICATION AND MATERIAL REQUIREMENTS OF THE APPLICABLE SUBSECTIONS OF SECTION 731
- BEARINGS SHALL BE PAID FOR UNDER ITEM 53100 "BEARING DEVICE ASSEMBLY."
- SHOP DRAWINGS CONFORMING TO SUBSECTION 531.03 SHALL BE SUBMITTED AND SHALL INCLUDE WELDING AND BONDING PROCEDURES. SHOP DRAWINGS SHALL ALSO INDICATE WHETHER BEARING COMPONENTS ARE TO BE GALVANIZED OR METALIZED. IF METALIZED IS USED, THE SHOP DRAWINGS SHALL DENOTE THE TYPE OF SEAL COATING THAT WILL BE PLACED ON THE METALIZING.
- SOLE PLATES AND WASHERS ARE TO BE GALVANIZED OR METALIZED AS PER SUBSECTION 506J5.
- THE WELD BETWEEN THE SOLE PLATE AND BOTTOM FLANGE SHALL BE SMAW 8018 (C3). AREAS OF GALVANIZING ON THE SOLE PLATE DESTROYED IN THE WELDING PROCESS SHALL BE REPAIRED IN ACCORDANCE WITH SECTION 513 OF THE SUPPLEMENTAL SPECIFICATION.
- THE CONCRETE SURFACE UNDER THE BEARING SHALL BE LEVEL.
- ANCHOR BOLTS SHALL HAVE A 1'-3" MINIMUM EMBEDMENT INTO CONCRETE. ANCHOR BOLTS SHALL CONFORM TO ASTM A307.
- AN ALTERNATE BEARING CONFIGURATION MAY BE SUBMITTED FOR APPROVAL. THE ALTERNATE SUBMITTED SHALL BE DESIGNED AND CERTIFIED TO MEET THE DESIGN LOADS AND CRITERIA SHOWN ON BEARING GEOMETRY TABLES ON BRIDGE SHEET BR 7 AND SHALL MAINTAIN THE ANCHORAGE SYSTEM SHOWN.
- IF AN ALTERNATE BEARING CONFIGURATION IS USED, BRIDGE SEAT ELEVATIONS SHALL BE ADJUSTED ACCORDINGLY.
- THE 1/8" THICK PREFORMED FABRIC PAD BENEATH THE MASONRY PLATE SHALL HAVE THE SAME SIZE AND ANCHOR BOLT HOLE LAYOUT AS THE CORRESPONDING MASONRY PLATE.



A EXPANSION BEARING
(NOT TO SCALE)

BEARING AT ABUTMENT SHOWN.
BEARING AT PIER SIMILAR

FILE NAME: 10-15785.V51N1515-06-1.TYP.TYP.EXP.BER.dgn
DATE/TIME: 02/20/02
USER: 2225

CHA CLOUGH, HARBOUR & ASSOCIATES LLP
ENGINEERS, SURVEYORS, PLANNERS & LANDSCAPE ARCHITECTS
1100 STATE STREET ALBANY, NEW YORK, 12208

STATE OF VERMONT AGENCY OF TRANSPORTATION		
Town of	SEARSBURG	Bridge No.
Highway No.	VT. RTE. 9	Log Sta.
		Surv. Sta.
VT. RTE. 9 OVER DEERFIELD RIVER		
EXPANSION BEARING DETAILS		
Designed By	D. VIENI	Drawn by
Checked By	M. OLSTAD	Bridge Design Supervisor
Date	2/2002	Date
PROJECT		PROJECT NO.
SEARSBURG - WILMINGTON		NHF 010-118)
I.G.C. Info.		
Bridge Sheet No. BR5		Sheet 98 of 435