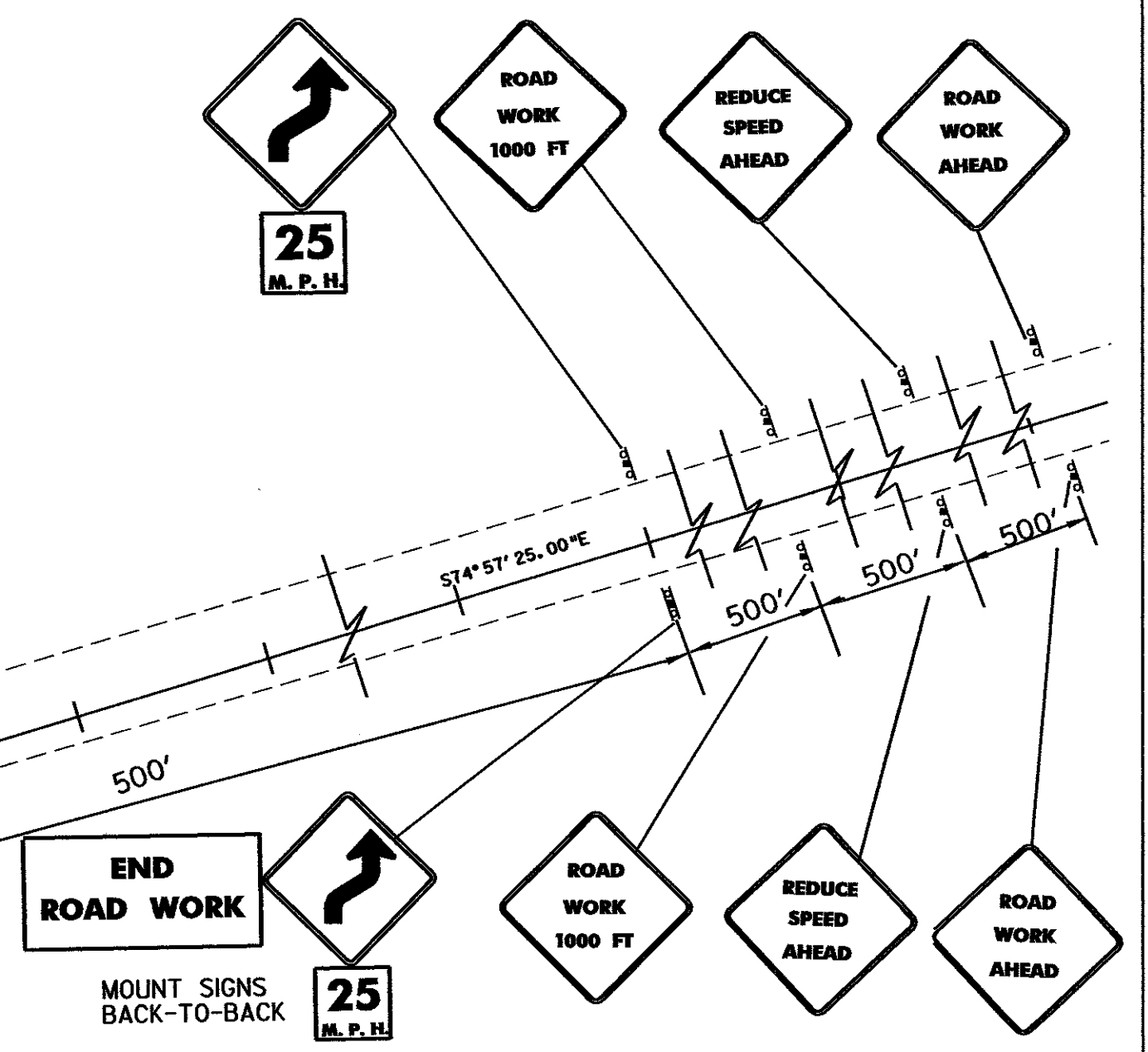


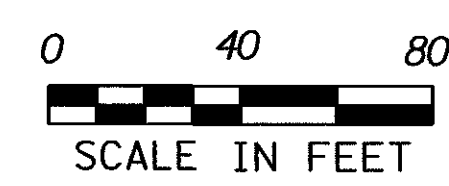
646.60 TEMPORARY 4" WHITE LINE
 STA. 145+53 - STA. 152+72 SOLID LT & RT (EDGE LINE)

646.61 TEMPORARY 4" YELLOW LINE
 STA. 145+58 - STA. 152+70 DOUBLE SOLID CL

NOTE: THE ACTUAL WORK ZONE SIGNING FOR THE GABION WALL CONSTRUCTION SHALL BE DETERMINED BY THE RESIDENT ENGINEER.



**GABION WALL
 DETOUR
 TRAFFIC
 CONTROL
 PLAN**



PROJECT NAME:	SEARSBURG - WILMINGTON		
PROJECT NUMBER:	NHF 010-118		
FILE NAME:	m:/design/78d096/dd096det.dgn	DATE:	16-FEB-2002
PROJECT LEADER:	DELLA SANTA	DRAWN BY:	SQUAD B
DESIGNED BY:	SQUAD B	CHECKED BY:	
		SHEET	93 OF 435

dd096det.1