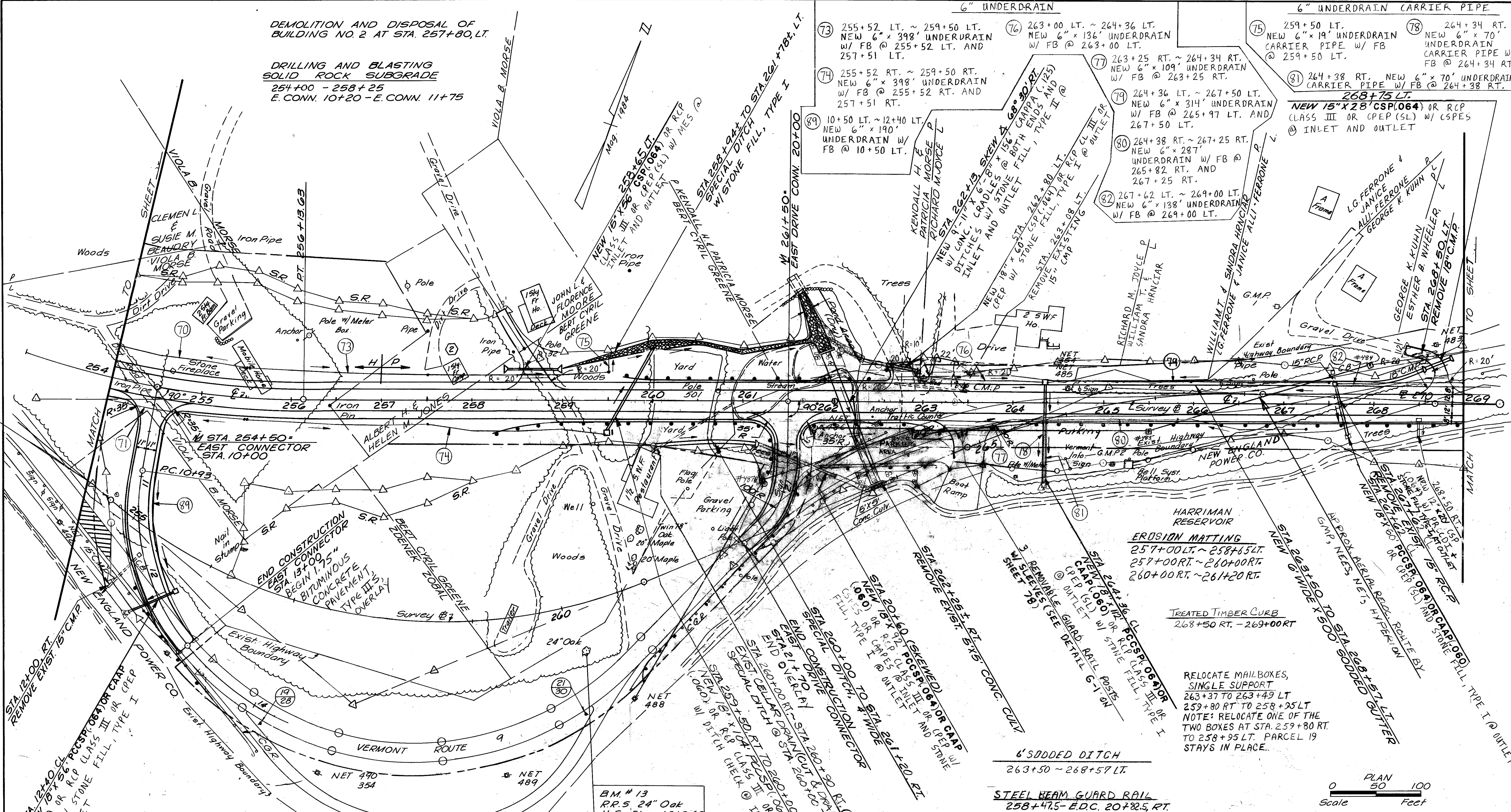


DEMOLITION AND DISPOSAL OF BUILDING NO. 2 AT STA. 257+80, LT.

DRILLING AND BLASTING SOLID ROCK SUBGRADE  
254+00 - 258+25  
E. CONN. 10+20 - E. CONN. 11+75



**CURVE DATA I**  
SIDE ROAD CONNECTOR  
Δ = 47°30'  
D = 23°00'  
R = 249.11'  
T = 109.61'  
L = 206.52' MANUFACTURED TERMINAL SECTION  
END AT 258+47.5 RT  
END AT 260+03 LT

**EXCAVATION OF SURFACES AND PAVEMENTS**  
M 251+70, RT. TO EAST CONN. 11+90, RT.  
COLD PLANING - BITUMINOUS PAVEMENT  
13+00 - 13+25 EAST CONNECTOR  
21+70 - 21+95 EAST DRIVE CONNECTOR

**CONSTRUCT DRIVE**  
258+65, LT. (GRAVEL) 12' W  
262+80, LT. (GRAVEL) 20' W  
263+24, LT. (GRAVEL) 22' W  
263+50, RT. (GRAVEL) 30' W  
268+75, LT. (GRAVEL) 12' W  
261+67 to 263+35 RT (GRAVEL DRIVE & PARKING AREA)

**6" SODDED DITCH**  
263+50 - 268+57 LT.

**STEEL BEAM GUARD RAIL**  
258+47.5 - E.D.C. 20+82.5 RT.  
260+03 - 262+53 LT  
261+80 - 262+55 RT  
EDC 23+60 - 263+15 RT (PARKING AREA)  
EAST CONN. 11+37.5 - 14+25 RT.  
262+92 RT - 269+00 RT

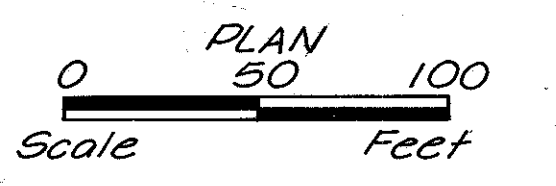
**REMOVAL AND DISPOSAL OF GUARD RAIL**  
EDL 23+70 RT - 263+00, RT.  
261+80, RT. - 262+60, RT.  
254+00 RT - E. CONN. 14+40 RT

**EROSION MATTING**  
262+00 - 263+00 RT  
EAST CONN. 11+75 - 12+50 LT

**EROSION MATTING**  
257+00 LT. - 258+65 LT.  
257+00 RT. - 260+00 RT.  
260+00 RT. - 261+20 RT.

**TREATED TIMBER CURB**  
268+50 RT. - 269+00 RT

RELOCATE MAILBOXES, SINGLE SUPPORT  
263+37 TO 263+49 LT  
259+80 RT TO 258+95 LT  
NOTE: RELOCATE ONE OF THE TWO BOXES AT STA. 259+80 RT. TO 258+95 LT. PARCEL 19 STAYS IN PLACE.



SEARSBURG - WILMINGTON  
FOIO-1 (18)

MAINLINE

McfARLAND-JOHNSON ENGINEERS, INC.  
BINGHAMTON NEW YORK  
SCALE AS NOTED DATE SHEET 77 OF 435

IN CHARGE OF: \_\_\_\_\_  
DESIGNED BY: \_\_\_\_\_  
CHECKED BY: \_\_\_\_\_  
DATE: \_\_\_\_\_

- (73) 255+52 LT. ~ 259+50 LT. NEW 6" x 398' UNDERDRAIN w/ FB @ 255+52 LT. AND 257+51 LT.
- (74) 255+52 RT. ~ 259+50 RT. NEW 6" x 398' UNDERDRAIN w/ FB @ 255+52 RT. AND 257+51 RT.
- (75) 259+50 LT. NEW 6" x 19' UNDERDRAIN CARRIER PIPE w/ FB @ 259+50 LT.
- (76) 263+00 LT. ~ 264+36 LT. NEW 6" x 136' UNDERDRAIN w/ FB @ 263+00 LT.
- (77) 263+25 RT. ~ 264+34 RT. NEW 6" x 109' UNDERDRAIN w/ FB @ 263+25 RT.
- (78) 264+34 RT. NEW 6" x 70' UNDERDRAIN CARRIER PIPE w/ FB @ 264+34 RT.
- (79) 264+36 LT. ~ 267+50 LT. NEW 6" x 314' UNDERDRAIN w/ FB @ 265+97 LT. AND 267+50 LT.
- (80) 264+38 RT. ~ 267+25 RT. NEW 6" x 287' UNDERDRAIN w/ FB @ 265+82 RT. AND 267+25 RT.
- (81) 264+38 RT. NEW 6" x 70' UNDERDRAIN CARRIER PIPE w/ FB @ 264+38 RT.
- (82) 267+62 LT. ~ 269+00 LT. NEW 6" x 138' UNDERDRAIN w/ FB @ 269+00 LT.
- (83) 268+75 LT. NEW 15" x 28' CSP (064) OR RCP (CLASS III OR CPEP (SL) W/ CSPES @ INLET AND OUTLET
- (84) 10+50 LT. ~ 12+40 LT. NEW 6" x 190' UNDERDRAIN w/ FB @ 10+50 LT.
- (85) 262+25 RT. ~ 264+34 RT. NEW 6" x 109' UNDERDRAIN w/ FB @ 263+25 RT.
- (86) 263+00 LT. ~ 264+36 LT. NEW 6" x 136' UNDERDRAIN w/ FB @ 263+00 LT.
- (87) 264+36 LT. ~ 267+50 LT. NEW 6" x 314' UNDERDRAIN w/ FB @ 265+97 LT. AND 267+50 LT.
- (88) 264+38 RT. ~ 267+25 RT. NEW 6" x 287' UNDERDRAIN w/ FB @ 265+82 RT. AND 267+25 RT.
- (89) 10+50 LT. ~ 12+40 LT. NEW 6" x 190' UNDERDRAIN w/ FB @ 10+50 LT.
- (90) 262+25 RT. ~ 264+34 RT. NEW 6" x 109' UNDERDRAIN w/ FB @ 263+25 RT.
- (91) 263+00 LT. ~ 264+36 LT. NEW 6" x 136' UNDERDRAIN w/ FB @ 263+00 LT.
- (92) 264+36 LT. ~ 267+50 LT. NEW 6" x 314' UNDERDRAIN w/ FB @ 265+97 LT. AND 267+50 LT.
- (93) 264+38 RT. ~ 267+25 RT. NEW 6" x 287' UNDERDRAIN w/ FB @ 265+82 RT. AND 267+25 RT.
- (94) 267+62 LT. ~ 269+00 LT. NEW 6" x 138' UNDERDRAIN w/ FB @ 269+00 LT.
- (95) 268+75 LT. NEW 15" x 28' CSP (064) OR RCP (CLASS III OR CPEP (SL) W/ CSPES @ INLET AND OUTLET

B.M. # 13  
R.R. 5. 24' Oak  
U.S. Elev. 1510.69