

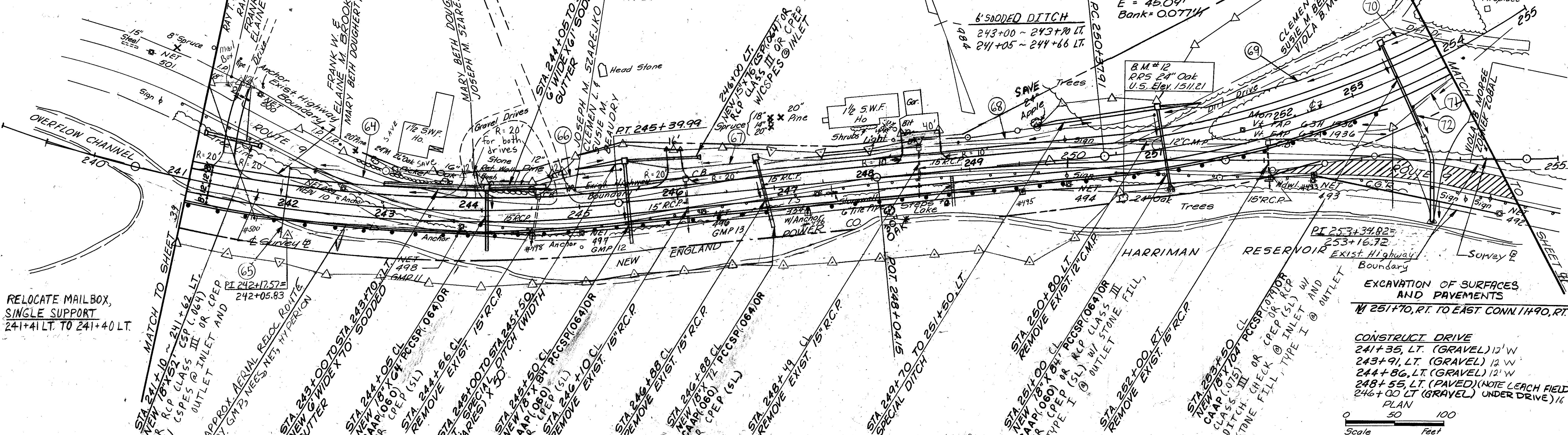
**REMOVAL AND DISPOSAL OF GUARD RAIL**  
 241+00, LT. - 249+70, RT.  
 250+50, RT. - 254+00, RT.

**STEEL BEAM GUARD RAIL**  
 247+00 - 252+87.5 RT.  
**MANUFACTURED TERMINAL SECTION**  
 BEGIN AT 252+87.5 RT.

**DRILLING & BLASTING**  
**SOLID ROCK SUBGRADE**  
 251+75 - 254+00

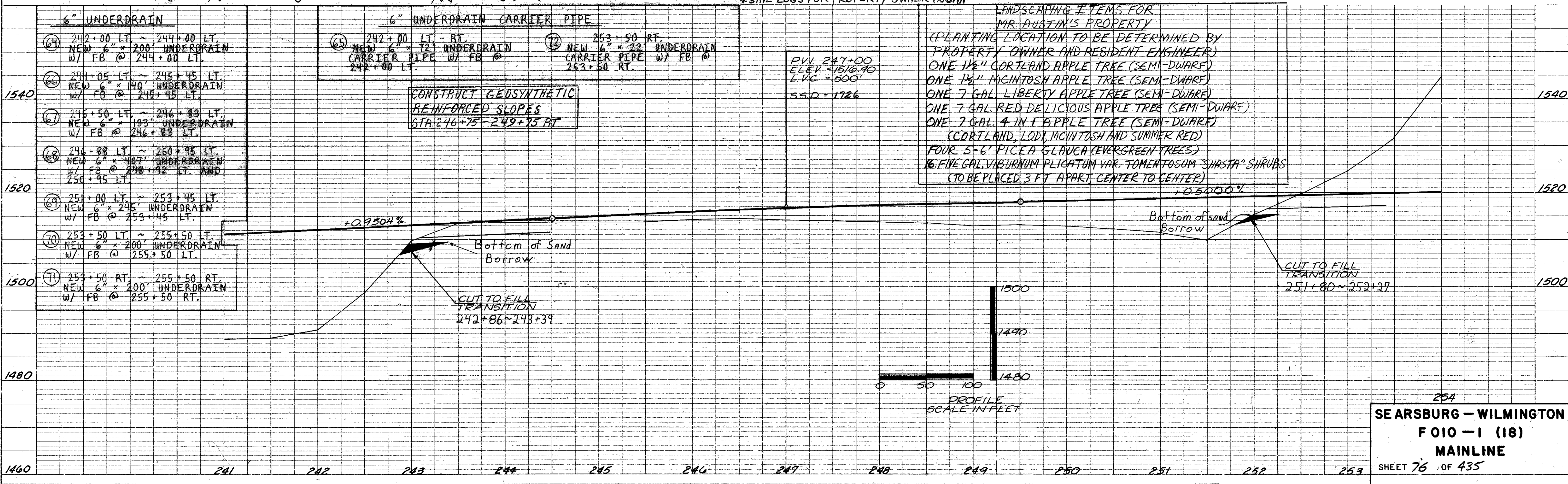
**SCARIFYING PAVEMENT**  
 249+50 TO 252+00

**CURVE DATA 14**  
 $\Delta = 34^{\circ}32'34.8"LT.$   
 $D = 6^{\circ}00'00"$   
 $R = 95493'$   
 $T = 296.91'$   
 $L = 575.72'$   
 $E = 45.09'$   
 Bank = 0.077M



**PLAN**  
 SURVEYED, GRADED, ALIGNED, CHECKED, BY: [blank]  
 NOTE BOOK, NO. [blank]  
 DATE, [blank]

**PROFILE**  
 SURVEYED, GRADED, CHECKED, BY: [blank]  
 NOTE BOOK, NO. [blank]  
 DATE, [blank]



SEARSBURG - WILMINGTON  
 FOIO - 1 (18)  
 MAINLINE  
 SHEET 76 OF 435