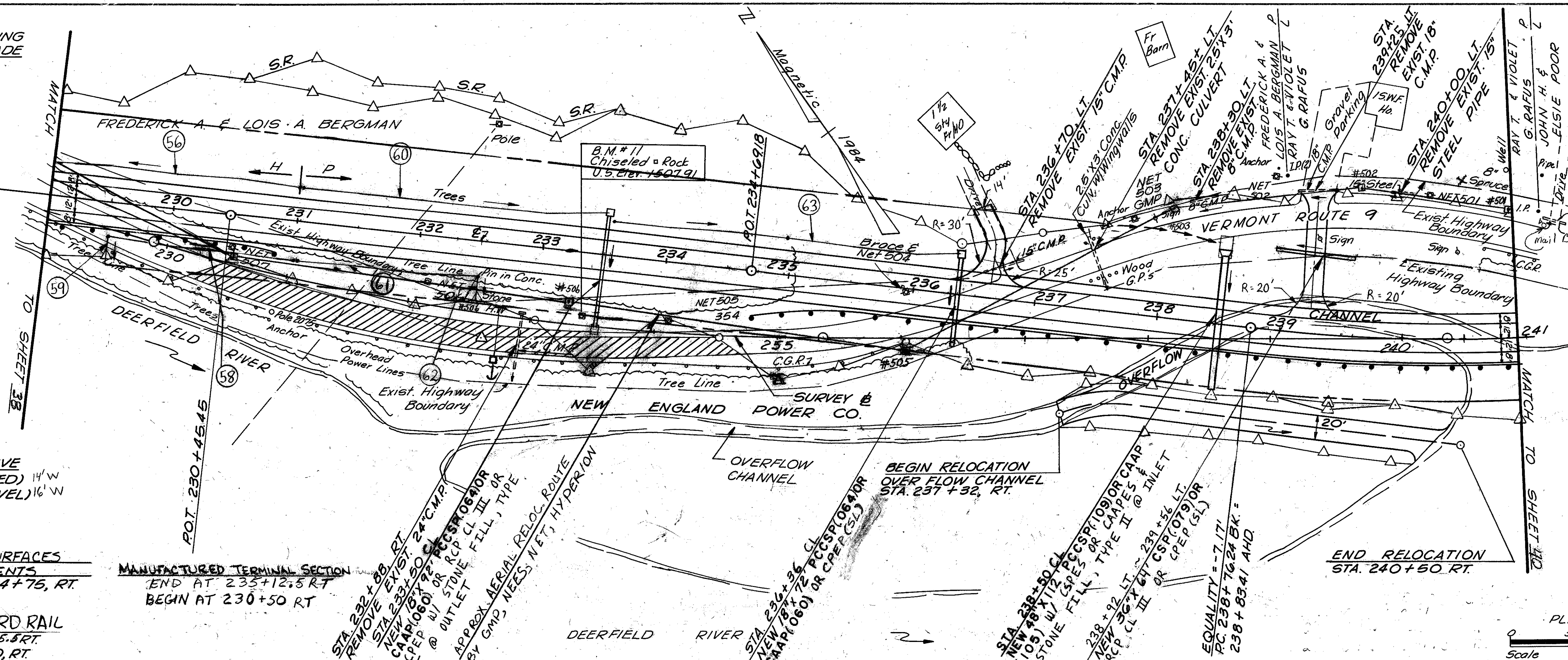


DRILLING AND BLASTING  
SOLID ROCK SUBGRADE  
228+75 - 234+25

**CURVE DATA 13**  
 $\Delta = 26^{\circ}15'47.4''$  LT.  
 $D = 4^{\circ}00'00''$   
 $R = 1432.40'$   
 $T = 334.16'$   
 $L = 656.58'$   
 $E = 38.46'$   
 $Bank = 0.063/1$



REMOVAL + DISPOSAL  
OF GUARD RAIL  
229+00 LT. - 236+00 RT.  
240+70 LT. - 241+00 LT.

REMOVAL AND DISPOSAL  
OF GUIDE POSTS  
237+50 LT. - 237+80 LT.

SCARIFYING PAVEMENT  
235+00 TO 238+00

CONSTRUCT DRIVE  
236+62, LT. (PAVED) 14' W  
239+29, LT. (GRAVEL) 16' W

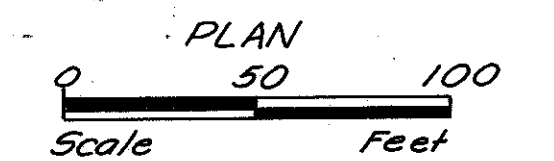
EXCAVATION OF SURFACES  
AND PAVEMENTS  
230+15, RT. TO 234+75, RT.

STEEL BEAM GUARD RAIL  
229+00 - 230+45.5 RT  
235+12.5 - 241+00, RT.

MANUFACTURED TERMINAL SECTION  
END AT 235+12.5 RT  
BEGIN AT 230+50 RT

BEGIN RELOCATION  
OVER FLOW CHANNEL  
STA. 237+32, RT.

END RELOCATION  
STA. 240+50 RT.



PLAN  
DATE: \_\_\_\_\_  
BY: \_\_\_\_\_  
CHECKED: \_\_\_\_\_  
NO. \_\_\_\_\_

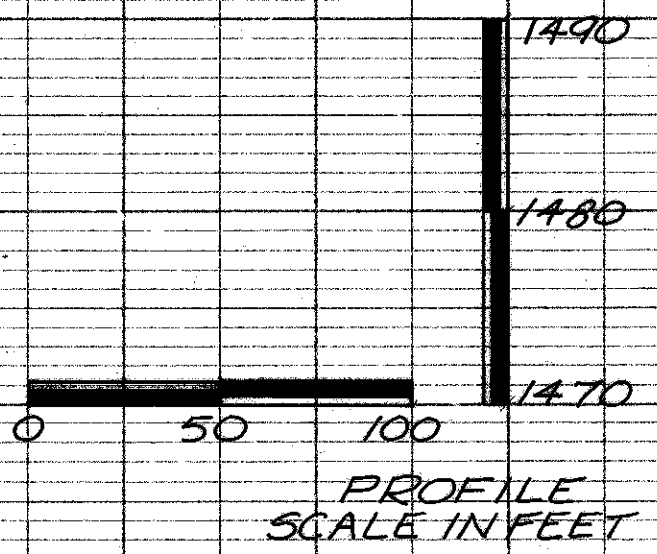
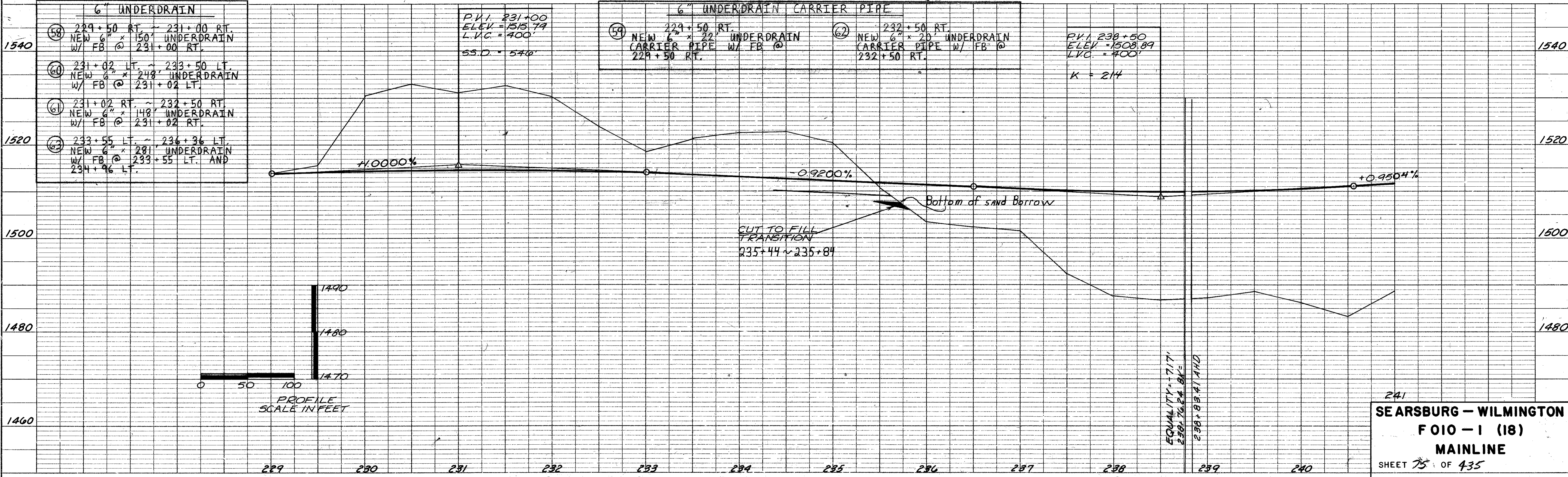
PROFILE  
DATE: \_\_\_\_\_  
BY: \_\_\_\_\_  
CHECKED: \_\_\_\_\_  
NO. \_\_\_\_\_

6" UNDERDRAIN	
58	229+50 RT. - 231+00 RT. NEW 6" x 150' UNDERDRAIN W/ FB @ 231+00 RT.
60	231+02 LT. - 233+50 LT. NEW 6" x 248' UNDERDRAIN W/ FB @ 231+02 LT.
61	231+02 RT. - 232+50 RT. NEW 6" x 148' UNDERDRAIN W/ FB @ 231+02 RT.
62	233+55 LT. - 236+36 LT. NEW 6" x 281' UNDERDRAIN W/ FB @ 233+55 LT. AND 234+96 LT.

P.V.I. 231+00  
ELEV. = 1515.79  
L.V.C. = 400'  
S.S.D. = 540'

6" UNDERDRAIN CARRIER PIPE	
59	229+50 RT. - 232+50 RT. NEW 6" x 22' UNDERDRAIN CARRIER PIPE W/ FB @ 229+50 RT.
62	232+50 RT. - 232+50 RT. NEW 6" x 20' UNDERDRAIN CARRIER PIPE W/ FB @ 232+50 RT.

P.V.I. 238+50  
ELEV. = 1503.89  
L.V.C. = 400'  
K = 214



241  
SEARSBURG - WILMINGTON  
FOIO - 1 (18)  
MAINLINE  
SHEET 75 OF 435