

LINES SHOWN ON THIS PLAN AS EXISTING PROPERTY LINES (P/L) ARE BELIEVED TO BE ACCURATE BUT SHOULD NOT BE RELIED UPON FOR PURPOSES UNRELATED TO THE STATE OF VERMONT'S ACQUISITION OF LAND AND RIGHTS FOR THIS PROJECT.

DEMOLITION AND DISPOSAL OF BUILDING NO. 2 AT STA. 257+80, LT.

DRILLING AND BLASTING SOLID ROCK SUBGRADE

251+75 - 258+25
E. CONN. 10+20 - E. CONN. 11+75

Relocate Mailboxes
Single Support

263+37 TO 263+49 LT.

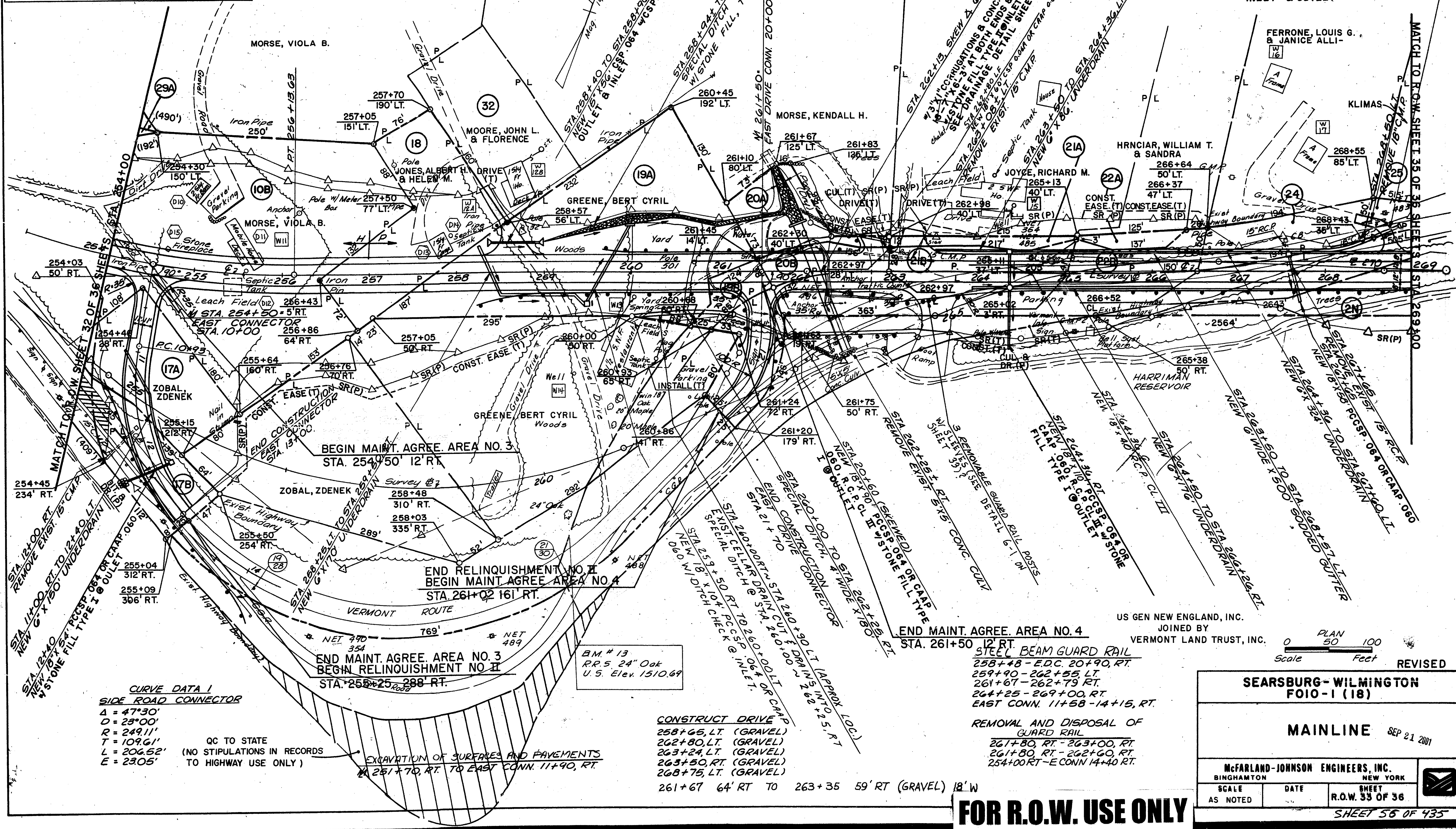
159+80 RT TO 258+95 LT.

NOTE: Relocate ONE OF THE TWO BOXES

AT STA. 259+80 RT TO 258+95 LT.

Parcel 19 STAYS IN PLACE.

STA. 268+57 TO STA. 268+83 LT.
NEW 15" X 30" CSP. 064 W/CSPES
INLET & OUTLET



IN CHARGE OF: DESIGNED BY: CHECKED BY: DETAILED BY:

CURVE DATA I
SIDE ROAD CONNECTOR
Δ = 47°30'
D = 23°00'
R = 249.11'
L = 109.61'
T = 206.52'
E = 230.5'

QC TO STATE
(NO STIPULATIONS IN RECORDS
TO HIGHWAY USE ONLY)

EXCAVATION OF SURFACES AND PAVEMENTS
FROM 251+70, RT. TO EAST CONN. 11+90, RT.

BM # 13
R.R. 5 24" Oak
U.S. Elev. 1510.69

CONSTRUCT DRIVE
258+65, LT. (GRAVEL)
262+80, LT. (GRAVEL)
263+24, LT. (GRAVEL)
263+50, RT. (GRAVEL)
268+75, LT. (GRAVEL)

261+67 64' RT TO 263+35 59' RT (GRAVEL) 18' W

END MAINT. AGREE. AREA NO. 4
STA. 261+50 12' RT

REMOVAL AND DISPOSAL OF GUARD RAIL
261+80, RT - 263+00, RT
261+80, RT - 262+60, RT
254+00, RT - E CONN. 14+40, RT.

US GEN NEW ENGLAND, INC.
JOINED BY
VERMONT LAND TRUST, INC.

0 PLAN 50 100
Scale Feet

REVISED

SEARSBURG - WILMINGTON
FOIO-1 (18)

MAINLINE SEP 21 2001

McfARLAND-JOHNSON ENGINEERS, INC.
BINGHAMTON NEW YORK

SCALE AS NOTED	DATE	SHEET R.O.W. 33 OF 36
----------------	------	-----------------------

SHEET 35 OF 435

FOR R.O.W. USE ONLY