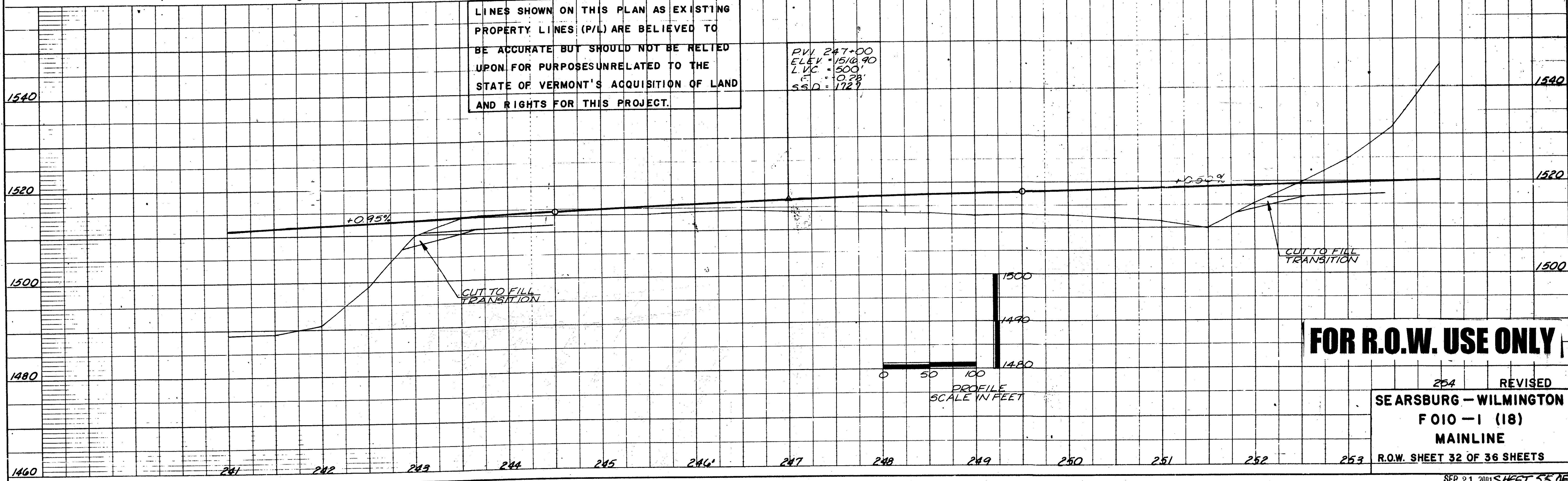


**PLAN**  
 SURVEYED:  
 PLOTTED:  
 NOTE BOOK:  
 NO.:

**PROFILE**  
 SURVEYED:  
 PLOTTED:  
 NOTE BOOK:  
 NO.:

LINES SHOWN ON THIS PLAN AS EXISTING  
 PROPERTY LINES (P/L) ARE BELIEVED TO  
 BE ACCURATE BUT SHOULD NOT BE RELIED  
 UPON FOR PURPOSES UNRELATED TO THE  
 STATE OF VERMONT'S ACQUISITION OF LAND  
 AND RIGHTS FOR THIS PROJECT.

PVI 247+00  
 ELEV 1518.90  
 LVC = 500'  
 F = 0.28  
 SSD = 172'



**FOR R.O.W. USE ONLY**

254 REVISED  
 SEARSBURG - WILMINGTON  
 FOIO - I (18)  
 MAINLINE  
 R.O.W. SHEET 32 OF 36 SHEETS