

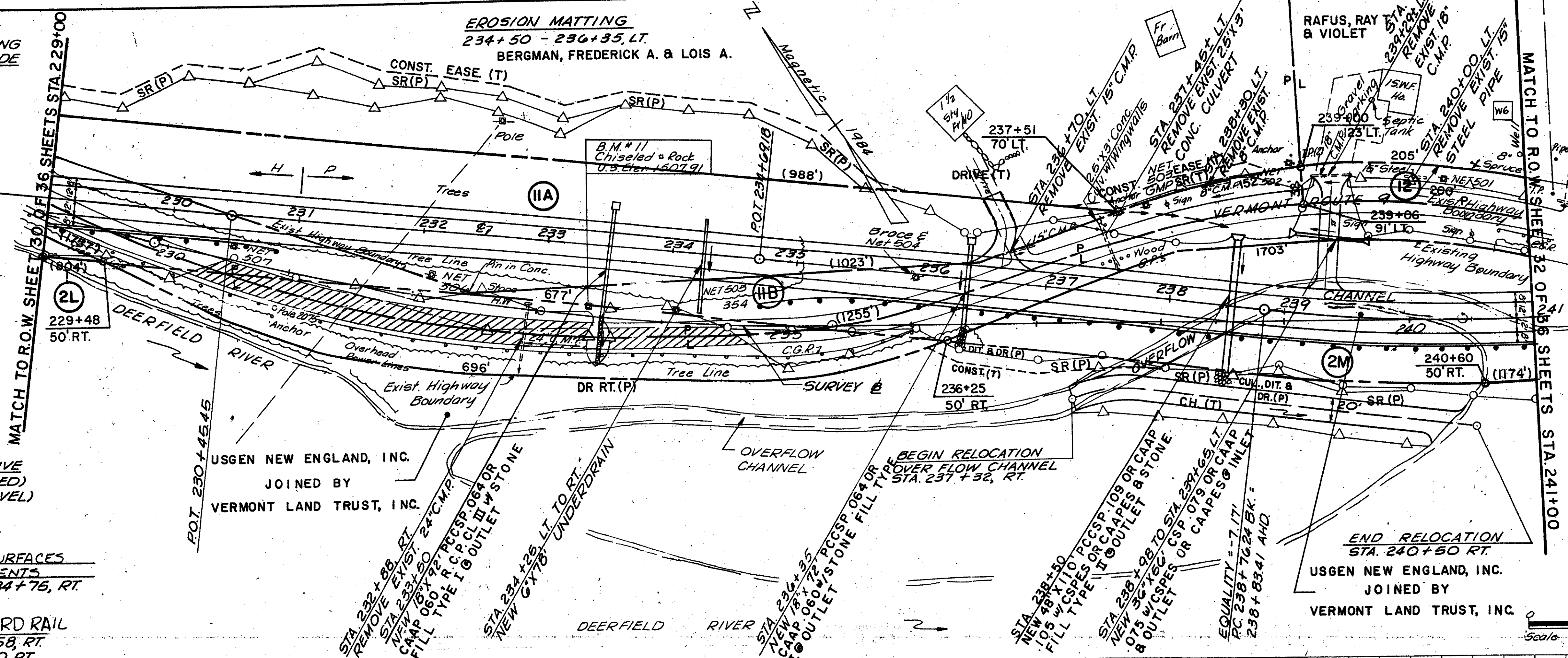
DATE	
BY	
REVISION	
NO.	
PLAN	
NO.	
DATE	
BY	
REVISION	
NO.	

DATE	
BY	
REVISION	
NO.	
PROFILE	
NO.	
DATE	
BY	
REVISION	
NO.	

**DRILLING AND BLASTING
SOLID ROCK SUBGRADE**
228+75 - 234+25

EROSION MATTING
234+50 - 236+35, LT.
BERGMAN, FREDERICK A. & LOIS A.

CURVE DATA 13
Δ = 26°15'47.4" LT.
D = 4°00'00"
R = 1432.40'
T = 334.16'
L = 656.58'
E = 38.46'
Bank = 0.063/1

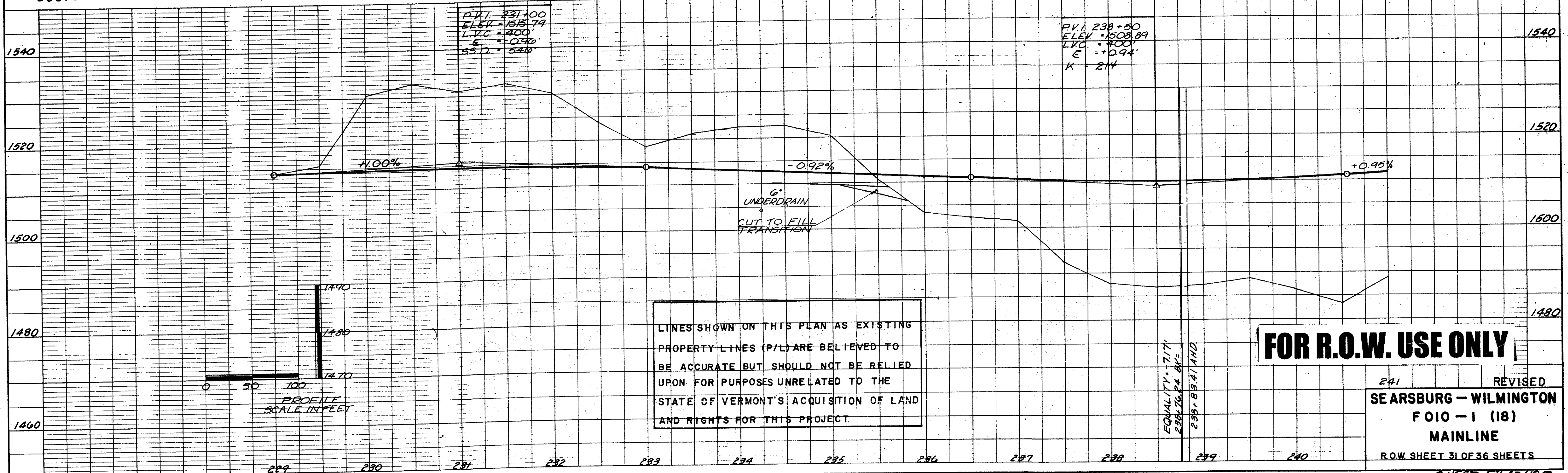


Relocate Mailbox Single Support
241+41 To 241+40 LT.

REMOVAL AND DISPOSAL
OF GUIDE POSTS
237+50, LT. - 237+80, LT.

SCARIFYING PAVEMENT
235+00 TO 238+00

Scale 0 50 100 Feet



LINES SHOWN ON THIS PLAN AS EXISTING
PROPERTY LINES (P/L) ARE BELIEVED TO
BE ACCURATE BUT SHOULD NOT BE RELIED
UPON FOR PURPOSES UNRELATED TO THE
STATE OF VERMONT'S ACQUISITION OF LAND
AND RIGHTS FOR THIS PROJECT.

FOR R.O.W. USE ONLY

241 REVISED
SE ARSBURG - WILMINGTON
FOIO - 1 (18)
MAINLINE
R.O.W. SHEET 31 OF 36 SHEETS