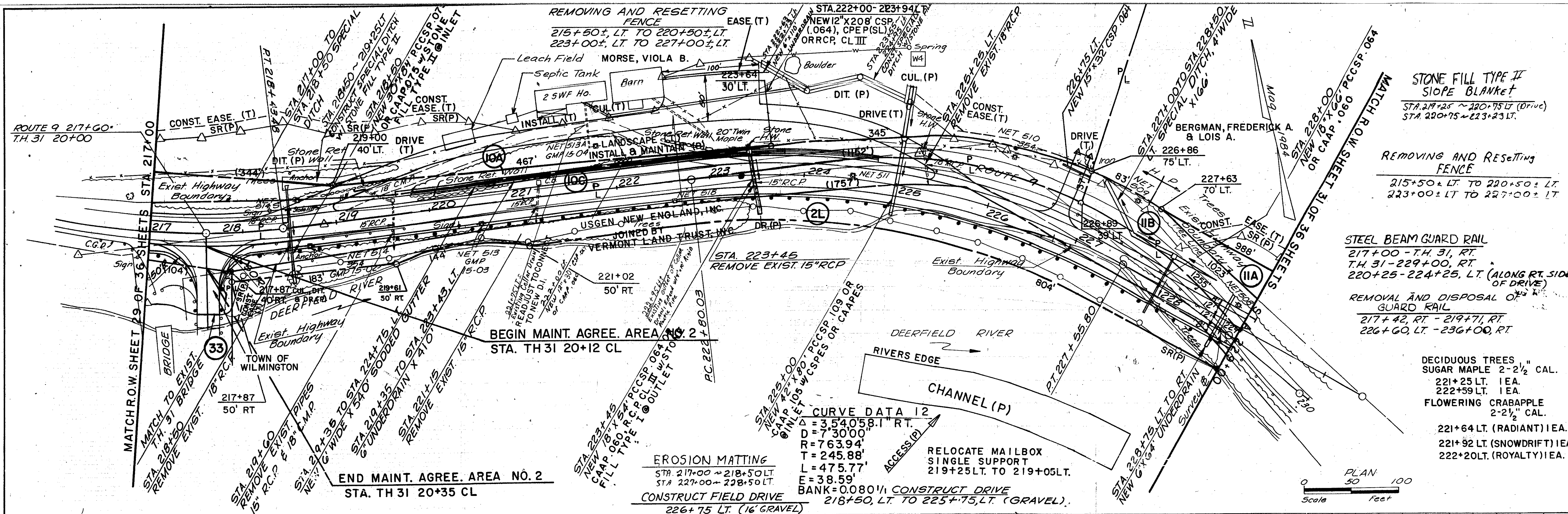


PLAN  
 DATE  
 BY  
 CHECKED  
 REVISIONS

PROFILE  
 DATE  
 BY  
 CHECKED  
 REVISIONS



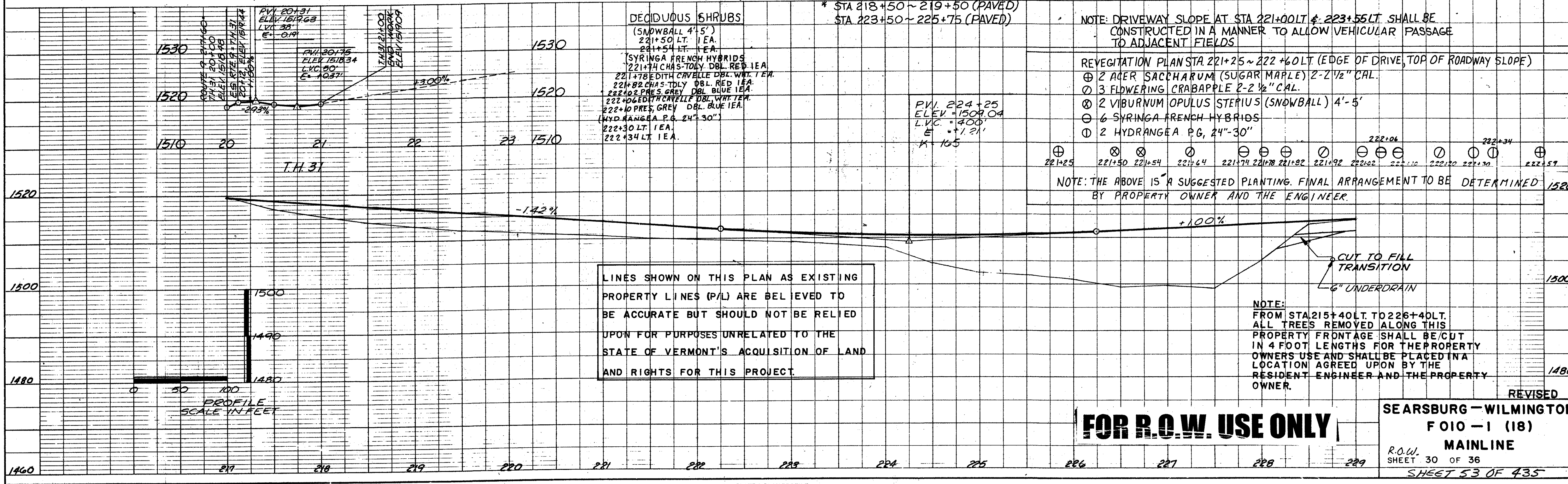
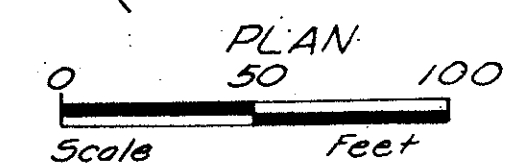
STONE FILL TYPE II  
 SLOPE BLANKET  
 STA. 219+25 ~ 220+75 LT (Drive)  
 STA. 220+75 ~ 223+25 LT.

REMOVING AND RESETTING  
 FENCE  
 215+50± LT TO 220+50± LT  
 223+00± LT TO 227+00± LT

STEEL BEAM GUARD RAIL  
 217+00 - T.H. 31, RT.  
 T.H. 31 - 224+00, RT.  
 220+25 - 224+25, LT. (ALONG RT. SIDE OF DRIVE)

REMOVAL AND DISPOSAL OF  
 GUARD RAIL  
 217+42, RT - 219+71, RT.  
 226+60, LT - 236+00, RT

DECIDUOUS TREES, 2-2 1/2" CAL.  
 221+25 LT. IEA.  
 222+59 LT. IEA.  
 FLOWERING CRABAPPLE  
 2-2 1/2" CAL.  
 221+64 LT. (RADIANT) IEA.  
 221+92 LT. (SNOWDRIFT) IEA.  
 222+20 LT. (ROYALTY) IEA.



LINES SHOWN ON THIS PLAN AS EXISTING  
 PROPERTY LINES (P/L) ARE BELIEVED TO  
 BE ACCURATE BUT SHOULD NOT BE RELIED  
 UPON FOR PURPOSES UNRELATED TO THE  
 STATE OF VERMONT'S ACQUISITION OF LAND  
 AND RIGHTS FOR THIS PROJECT.

NOTE: DRIVEWAY SLOPE AT STA 221+00 LT & 223+55 LT. SHALL BE  
 CONSTRUCTED IN A MANNER TO ALLOW VEHICULAR PASSAGE  
 TO ADJACENT FIELDS

- REVEGETATION PLAN STA 221+25 ~ 222+60 LT. (EDGE OF DRIVE, TOP OF ROADWAY SLOPE)
- ⊕ 2 ACER SACCHARUM (SUGAR MAPLE) 2-2 1/2" CAL.
  - ⊙ 3 FLOWERING CRABAPPLE 2-2 1/2" CAL.
  - ⊗ 2 VIBURNUM OPULUS STERIOUS (SNOWBALL) 4'-5'
  - ⊖ 6 SYRINGA FRENCH HYBRIDS
  - ⊙ 2 HYDRANGEA PG, 24"-30"

NOTE: THE ABOVE IS A SUGGESTED PLANTING. FINAL ARRANGEMENT TO BE DETERMINED  
 BY PROPERTY OWNER AND THE ENGINEER.

NOTE:  
 FROM STA 215+40 LT. TO 226+40 LT.  
 ALL TREES REMOVED ALONG THIS  
 PROPERTY FRONTAGE SHALL BE CUT  
 IN 4 FOOT LENGTHS FOR THE PROPERTY  
 OWNERS USE AND SHALL BE PLACED IN A  
 LOCATION AGREED UPON BY THE  
 RESIDENT ENGINEER AND THE PROPERTY  
 OWNER.

**FOR R.O.W. USE ONLY**

REVISED  
 SEARSBURG - WILMINGTON  
 FOIO - 1 (18)  
 MAINLINE  
 R.O.W.  
 SHEET 30 OF 36  
 SHEET 53 OF 435