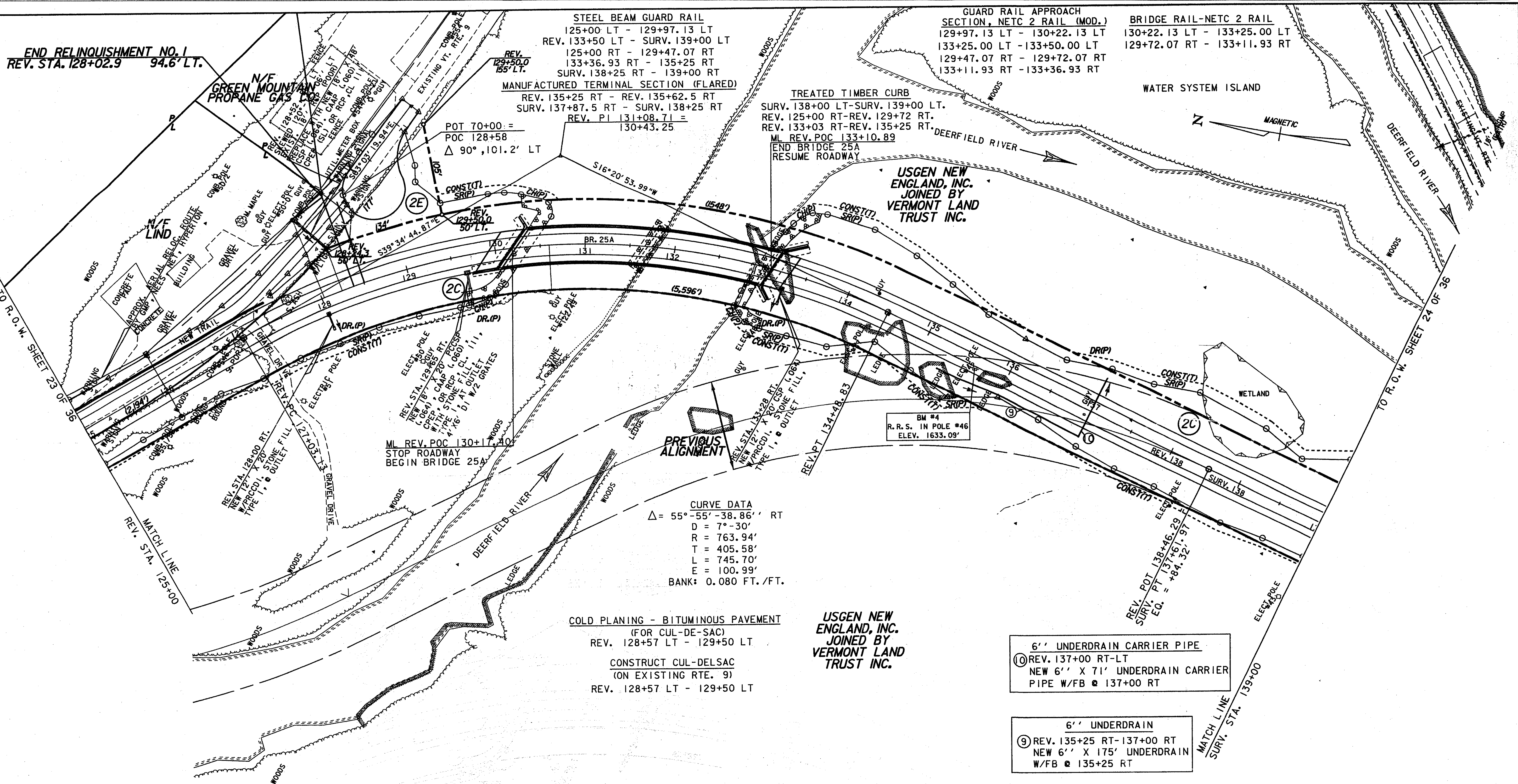


END RELINQUISHMENT NO. 1
REV. STA. 128+02.9 94.6' LT.



TO R.O.W. SHEET 23 OF 36

TO R.O.W. SHEET 24 OF 36

MATCH LINE
REV. STA. 125+00

MATCH LINE
SURV. STA. 139+00

STEEL BEAM GUARD RAIL
125+00 LT - 129+97.13 LT
REV. 133+50 LT - SURV. 139+00 LT
125+00 RT - 129+47.07 RT
133+36.93 RT - 135+25 RT
SURV. 138+25 RT - 139+00 RT

MANUFACTURED TERMINAL SECTION (FLARED)
REV. 135+25 RT - REV. 135+62.5 RT
SURV. 137+87.5 RT - SURV. 138+25 RT
REV. P.I. 131+08.71 = 130+43.25

GUARD RAIL APPROACH SECTION, NETC 2 RAIL (MOD.)
129+97.13 LT - 130+22.13 LT
133+25.00 LT - 133+50.00 LT
129+47.07 RT - 129+72.07 RT
133+11.93 RT - 133+36.93 RT

BRIDGE RAIL-NETC 2 RAIL
130+22.13 LT - 133+25.00 LT
129+72.07 RT - 133+11.93 RT

TREATED TIMBER CURB
SURV. 138+00 LT-SURV. 139+00 LT.
REV. 125+00 RT-REV. 129+72 RT.
REV. 133+03 RT-REV. 135+25 RT.
ML REV. POC 133+10.89
END BRIDGE 25A
RESUME ROADWAY

USGEN NEW ENGLAND, INC. JOINED BY VERMONT LAND TRUST INC.

PREVIOUS ALIGNMENT

CURVE DATA
 $\Delta = 55^\circ - 55' - 38.86''$ RT
D = 7'-30"
R = 763.94'
T = 405.58'
L = 745.70'
E = 100.99'
BANK: 0.080 FT./FT.

COLD PLANING - BITUMINOUS PAVEMENT (FOR CUL-DE-SAC)
REV. 128+57 LT - 129+50 LT

CONSTRUCT CUL-DE-SAC (ON EXISTING RTE. 9)
REV. 128+57 LT - 129+50 LT

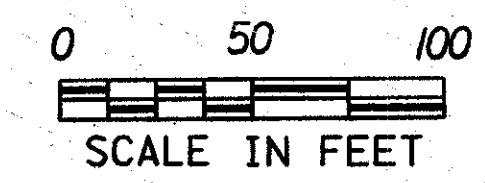
USGEN NEW ENGLAND, INC. JOINED BY VERMONT LAND TRUST INC.

6" UNDERDRAIN CARRIER PIPE
⑩ REV. 137+00 RT-LT
NEW 6" X 71' UNDERDRAIN CARRIER PIPE W/FB @ 137+00 RT

6" UNDERDRAIN
⑨ REV. 135+25 RT-137+00 RT
NEW 6" X 175' UNDERDRAIN W/FB @ 135+25 RT

LINES SHOWN ON THIS PLAN AS EXISTING PROPERTY LINES (P/L) ARE BELIEVED TO BE ACCURATE BUT SHOULD NOT BE RELIED UPON FOR PURPOSES UNRELATED TO THE STATE OF VERMONT'S ACQUISITION OF LAND AND RIGHTS FOR THIS PROJECT.

WATER SYSTEM ISLAND
THE WATER SYSTEM ISLAND TO THE EAST OF THE NEW ALIGNMENT AND BETWEEN THE TWO BRANCHES OF THE DEERFIELD RIVER SHALL BE CONSIDERED A "NO DISTURBANCE AREA" AND, THEREFORE, NO CONSTRUCTION ACTIVITY SHALL BE CONDUCTED ON THIS ISLAND.



FOR R.O.W. USE ONLY

REVISED

PROJECT NAME: SEARSBURG - WILMINGTON
PROJECT NUMBER: NHF 010-(118)

PLOT FILE NAME: DD096L03
PROJECT LEADER: DELLA SANTA
DESIGN FILE: 78D096/DESIGN/DD096CNUJ.DGN

PLOT DATE: 20-JUN-2001
DRAWN BY: SQUAD B

R. O. W. SHEET 23A OF 36 SHEETS

SHEET 216 OF 435
SEP 21 2001