

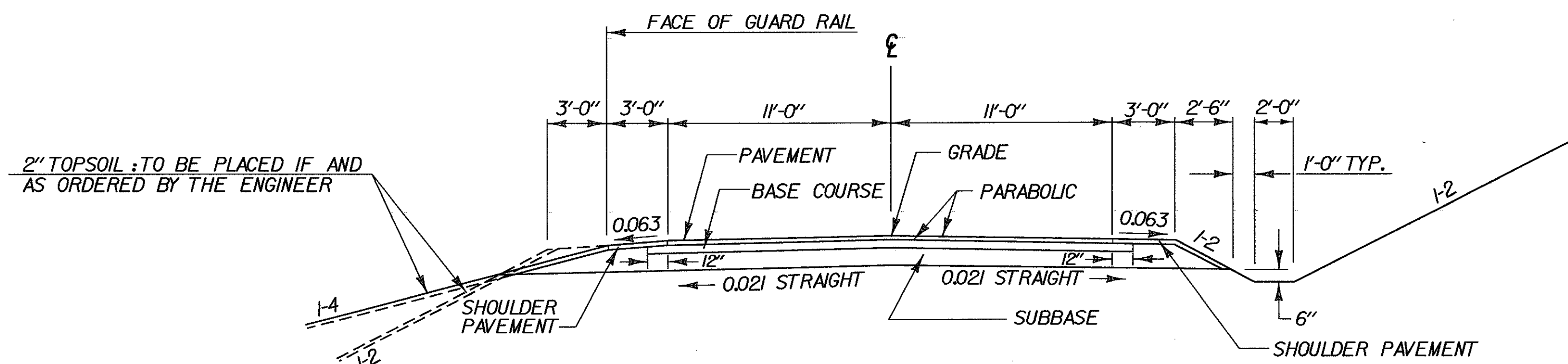
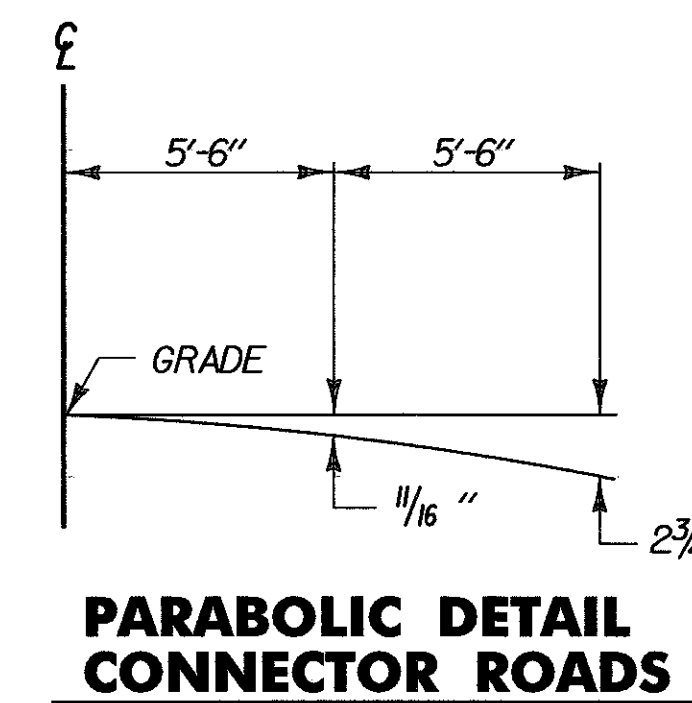
VT. ROUTE 9 SIDEROAD TYPICAL SECTIONS

MATERIAL ITEM	THICKNESS TOLERANCE
PAVEMENT	± 1/4"
SUBBASE	± 1"
SAND BORROW	± 1"

1 3/4" BITUMINOUS CONCRETE PAVEMENT, TYPE IIIS (PG 58-28)
 3 1/2" BASE COURSE OF BITUMINOUS CONCRETE PAVEMENT, TYPE IS (PG 58-28)
 18" SUBBASE OF DENSE GRADED CRUSHED STONE

SHOULDERS : 1 3/4" BITUMINOUS CONCRETE PAVEMENT, TYPE IIIS (PG 58-28)
 0" - 24" SAND BORROW (IN CUTS): TO BE PLACED AS NOTED ON THE PLANS OR AS DIRECTED BY THE ENGINEER

- NOTES:
1. MAXIMUM BANK OF EAST CONNECTOR IS 0.040 FT/FT
 2. REFER TO STANDARD SHEET A-61

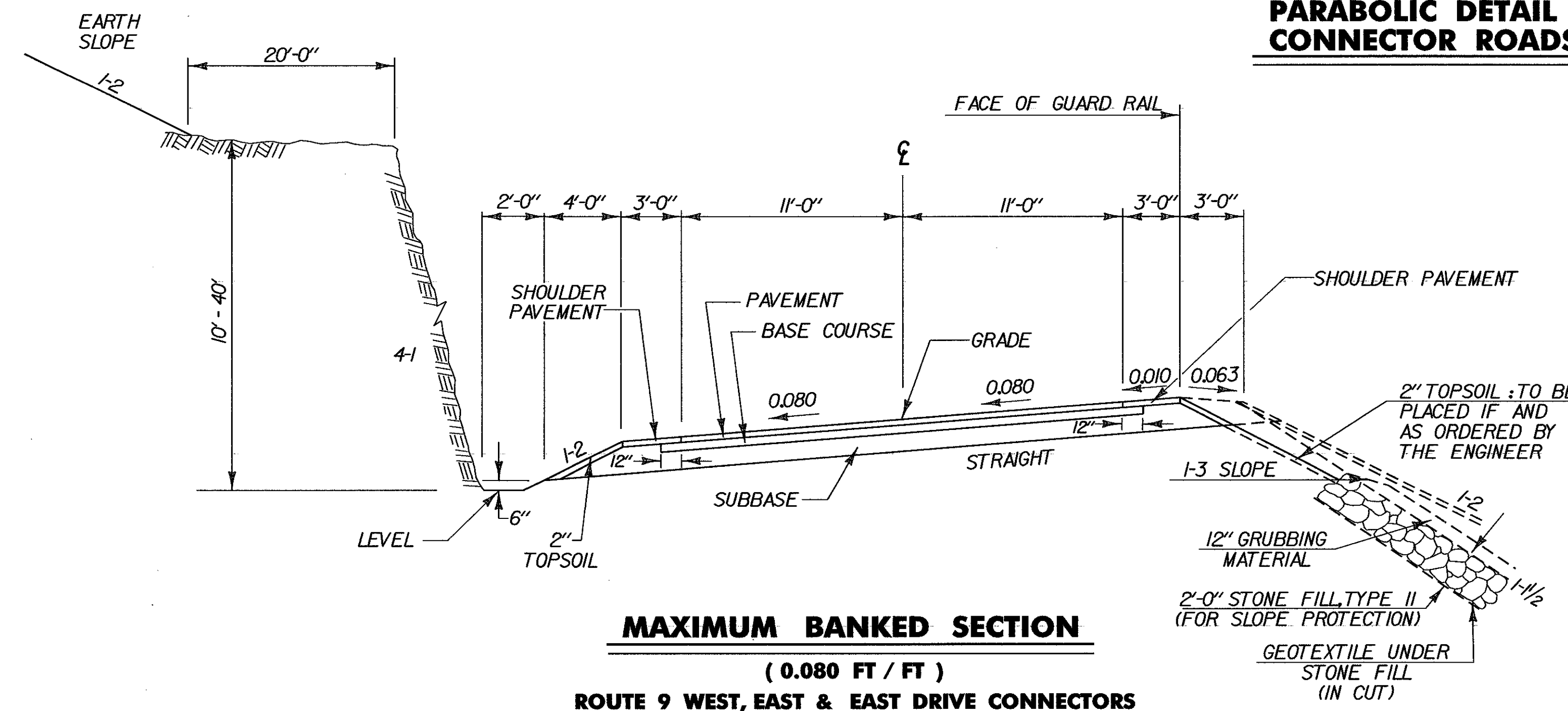


NORMAL SECTION

ROUTE 9 WEST, EAST, & EAST DRIVE CONNECTORS

OVERLAY (22' WIDE)

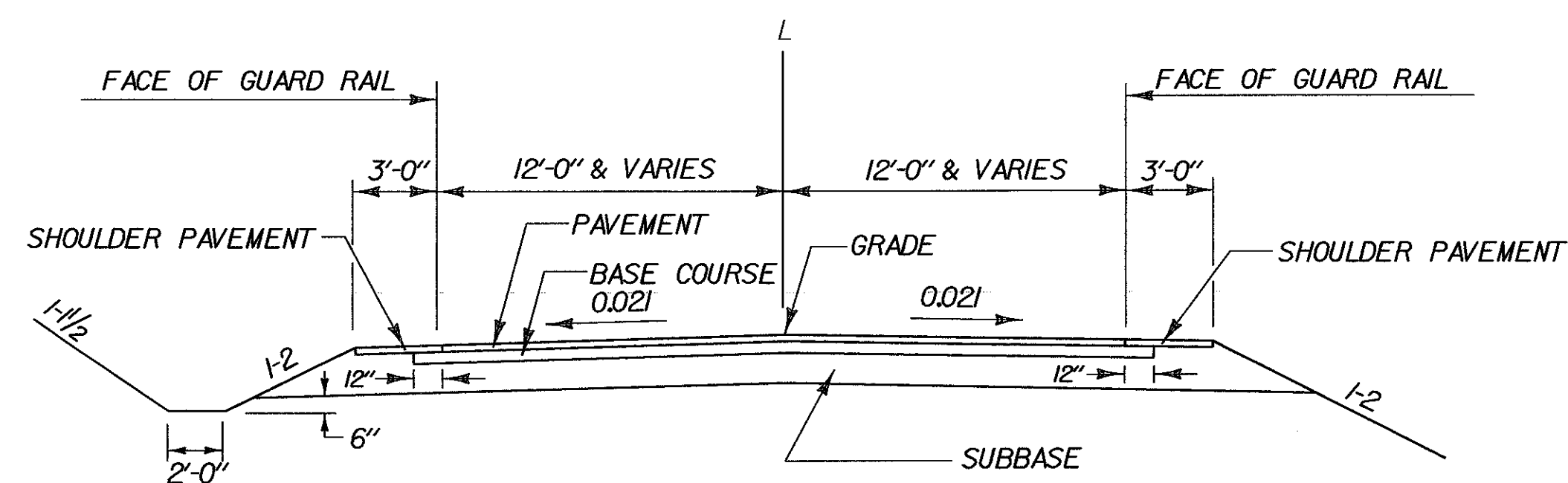
1 3/4" BITUMINOUS CONCRETE PAVEMENT, TYPE IIIS (PG 58-28)
 LOCATIONS: FROM WEST CONNECTOR 24+00 TO CUL-DE-SAC 71+26
 FROM EAST CONNECTOR 13+00 TO EAST DRIVE CONNECTOR 21+70



MAXIMUM BANKED SECTION

(0.080 FT / FT)

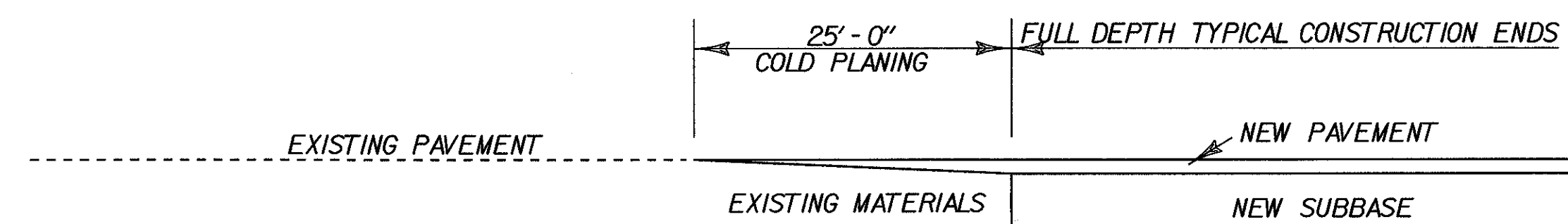
ROUTE 9 WEST, EAST & EAST DRIVE CONNECTORS



TOWN HIGHWAY 31

COLD PLANING LIMITS AT APPROACHES

INCLUDES SHOULDERS



NOT TO SCALE

PROJECT: SEARSBURG - WILMINGTON	PROJECT NO.: NHF 010 - 1 (18)
DESIGN FILE NAME: /78D096/DESIGN/DD096TYP.DGN	PLOT DATE: 05-FEB-2002
IPARM FILE NAME: DD096TY2	SURVEY DATE:
SURVEYED BY:	DRAWN BY: SQUAD B
SQUAD LEADER: DELLA SANTA	SHEET: 4 OF 435